

CITY OF SPARKS

2026 CDGB PHASE 3 PROJECT

12TH & 13TH STREET

FEDERALLY FUNDED

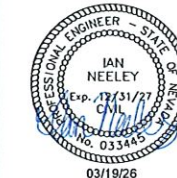
PWP # WA-2026-131

BID # 25/26-005



950 SANDHILL ROAD, SUITE 100
RENO, NV 89521
TEL: 775.827.6111
WWW.LUMOSINC.COM
INFO@LUMOSINC.COM

© LUMOS & ASSOCIATES, INC. THIS DRAWING IS THE PROPERTY OF LUMOS & ASSOCIATES, INC. USE OR REPRODUCTION OF THIS DRAWING, IN WHOLE OR IN PART, WITHOUT THE WRITTEN PERMISSION OF LUMOS & ASSOCIATES, INC. IS STRICTLY PROHIBITED. THIS DRAWING IS NOT TO BE USED FOR ANY PROJECT OTHER THAN THE PROJECT FOR WHICH IT WAS PREPARED.



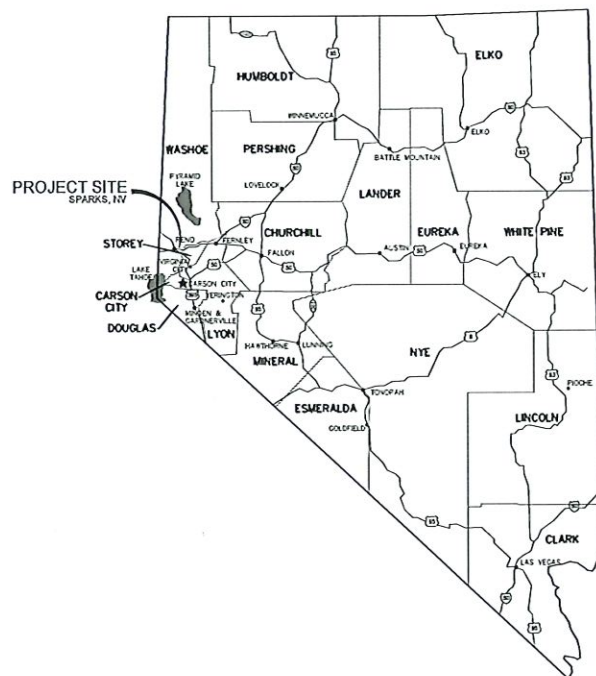
03/19/26

SPARKS CITY COUNCIL

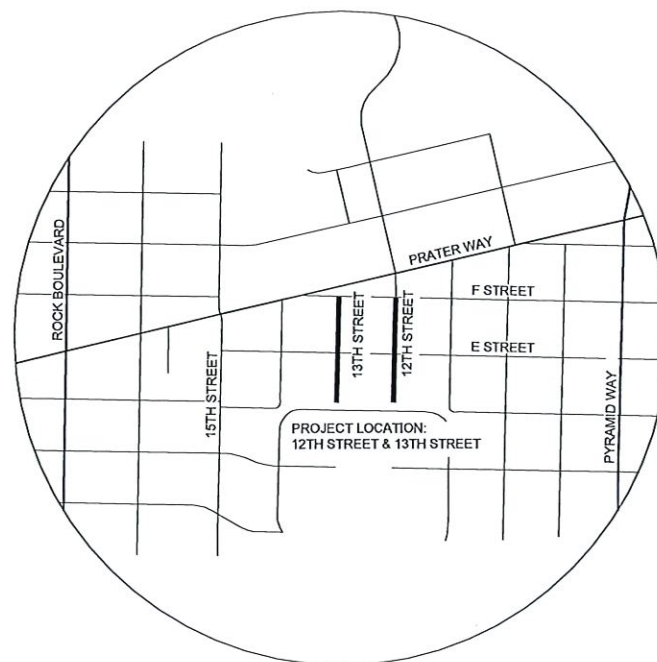
MAYOR	ED LAWSON
WARD 1	DONALD ABBOTT
WARD 2	DIAN VANDERWELL
WARD 3	PAUL ANDERSON
WARD 4	CHARLENE BYBEE
WARD 5	JOE RODRIGUEZ
CITY MANAGER	DION LOUTHAN

APPROVED BY:

Amber Soba 3-23-2026
AMBER SOBA, P.E. - CITY ENGINEER DATE



LOCATION MAP



VICINITY MAP

SHEET INDEX:

TITLE SHEET	C1.0
NOTES, ABBREVIATIONS, AND LEGEND	C1.1
PROJECT CONTROL AND SHEET INDEX	C1.2
SURFACE IMPROVEMENT SHEETS	
13TH SURFACE IMPROVEMENTS	C2.0-C2.1
12TH SURFACE IMPROVEMENTS	C2.2-C2.3
GRADING SHEETS	
13TH STREET GRADING PLANS	C3.0
12TH STREET GRADING PLANS	C3.1
DETAIL SHEETS	
DETAILS	D1.0-D1.3



OWNER

ATTN: BOB SCHRICKER
431 PRATER WAY
SPARKS, NEVADA 89431
TEL: 775.353.2305



ENGINEER

950 SANDHILL ROAD, SUITE 100
RENO, NEVADA 89521
TEL: 775.827.6111
INFO@LUMOSINC.COM



Know what's below.
Call before you dig.

CITY OF SPARKS
 CDBG PHASE 3
 12TH & 13TH STREET
 TITLE SHEET
 WASHOE COUNTY
 SPARKS
 NEVADA

REV	DATE	DESCRIPTION

BID SET
 NOT FOR CONSTRUCTION
 MARCH 2026

BAR IS 1 INCH ON ORIGINAL DRAWING

 IF NOT ONE INCH ON THIS SHEET,
 ADJUST SCALES ACCORDINGLY

C1.0

DRAWN BY: NAC/AH
 DESIGNED BY: NAC/AH
 CHECKED BY: IPN
 JOB NO.: 10415.004

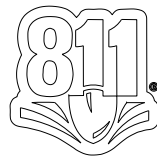
L:\Projects\10415.004 - CDB Phase 3 Design\3-Design\DWG\Civil\Sheet\10415004 - Title and Notes Sheets.dwg,C1.0
 03/19/2026 11:22 am

LEGEND

EXISTING		PROPOSED
	CONTOUR LINE	
	GROUND ELEVATION	
	TREE	
	ROCK	
	EDGE OF PAVEMENT	
	AC PAVING TO BE REMOVED	
	CURB & GUTTER	
	CONCRETE	
	UTILITY POLE	
	LIGHT	
	GUY WIRE	
	ELECTRIC TRANSFORMER	
	ELECTRIC VAULT	
	ELECTRIC PANEL	
	ELECTRIC CABINET	
	ELECTRIC BOX	
	ELECTRIC METER	
	ELECTRIC GENERATOR	
	ELECTRIC MANHOLE	
	AIR CONDITIONER	
	ELECTRIC OUTLET	
	BOLLARD	
	STORM DRAIN MANHOLE / DROP INLET	
	CATCH BASIN	
	WATER VALVE	
	IRRIGATION CONTROL VALVE WATER	
	METER	
	WATER SPIGOT / HOSE BIB WATER	
	MANHOLE	
	WATER VAULT	
	FIRE HYDRANT	
	GAS VALVE	
	GAS METER	
	TELEPHONE MANHOLE	
	TELEPHONE BOX	
	TELEPHONE VAULT	
	SEWER MANHOLE	
	SEWER CLEANOUT	
	SURVEY MONUMENT	
	CONTROL POINT	
	BARRICADE	
	SIGN	
	RETAINING WALL	
	FENCE	
	GRADE BREAK	
	FLOW LINE	
	SOIL TEST PIT	
	DETAIL CALLOUT	
	COMM LINE	
	GAS LINE	
	ELECTRIC LINE	
	SEWER LINE	
	WATER LINE	
	AIR LINE	
	STORM DRAIN	
	RECLAIMED WATER LINE	

ABBREVIATIONS

AC	ASPHALT CONCRETE	N	NORTH
ACP	ASBESTOS CEMENT PIPE	NAP	NOT A PART
AGG	AGGREGATE	NIP	NOT IN PROJECT
BC	BEGIN CURVE (HORIZONTAL)	NTS	NOT TO SCALE
BOW	BOTTOM OF WALL	OC	ON CENTER
BF, BOF	BOTTOM OF FOOTING	OD	OUTSIDE DIAMETER
BV	BUTTERFLY VALVE	OH	OVERHEAD
BVC	BEGIN VERTICAL CURVE	(P)	PROPOSED
BW	BACK OF WALK	PCC	PORTLAND CEMENT CONCRETE, POINT OF COMPOUND CURVATURE
CB	CATCH BASIN	PG	PAD GRADE
cfs	CUBIC FEET PER SECOND	PI	POINT OF INTERSECTION
CF	CUBIC FEET	PIC	POINT OF INTERSECTION VERTICAL CURVE
C&G	CURB AND GUTTER	PL	PROPERTY LINE
℄	CENTER LINE	PP	POWER POLE
CL	CLASS / CENTER LINE	PRC	POINT OF REVERSE CURVE
CMP	CORRUGATED METAL PIPE	PRVC	POINT OF REVERSE VERTICAL CURVE
COMP	COMPACTION	PVC	POLYVINYL CHLORIDE
CONC	CONCRETE	PVMT	PAVEMENT
CONTR	CONTRACTOR	Q 5	5 YEAR PEAK FLOW
CP	CONCRETE PAD	Q 100	100 YEAR PEAK FLOW
CTV	CABLE TELEVISION	R	RADIUS
DI	DROP INLET	RCP	REINFORCED CONCRETE PIPE
DIA, Ø	DIAMETER	REF	REFERENCE
DWY	DRIVEWAY	RET	CURB RETURN
E	EAST	RP	RADIUS POINT
EA	EACH	RT	RIGHT
EC	END CURVE (HORIZONTAL)	R/W, ROW	RIGHT-OF-WAY
ELO	SLOPE	S=	ELBOW
ELEC	ELECTRICAL	S	SOUTH
ELEV	ELEVATION	SD	STORM DRAIN
EVC	END VERTICAL CURVE	SDMH	STORM DRAIN MANHOLE
EXT	EXISTING	SL	STREET LIGHT
EXT (E)	EXTERIOR	SS	SANITARY SEWER
FCA	FLANGE COUPLING ADAPTER	SSCO	SANITARY SEWER CLEAN OUT
FE	FINISH ELEVATION	SSMH	SANITARY SEWER MANHOLE
FES	FLARED END SECTION	SSPWC	STANDARD SPEC. FOR PUBLIC WORKS CONSTRUCTION
FF	FINISH FLOOR	STA	STATION
FFC	FRONT FACE OF CURB	SW	SIDEWALK
FG	FINISH GRADE	TELE	TELEPHONE
FH	FIRE HYDRANT	TBO	TEMPORARY BLOW OFF VALVE
FL	FLOW LINE	TC	TOP OF CURB, TOP OF CONC
FLG	FLANGE	TCSB	TRAFFIC CONTROL SIGNAL BOX
fps	FEET PER SECOND	TO	TO GRADE
FTG	FOOTING	TOB	TOP OF BERM
G	GAS	TF, TOF	TOP OF FOOTING
GALV	GALVANIZED	TOW	TOP OF WALL
GB	GRADE BREAK	TS	TRAFFIC SIGNAL
GDW	GRAVEL DRIVEWAY	TR	TRANSITION
GD	GROUND	TRANS	TYPICAL
GV	GATE VALVE	UG/P	UNDER GROUND POWER
H	HANDICAPPED	UNO	UNLESS NOTED OTHERWISE
HGL	HYDRAULIC GRADE LINE	V 5	VELOCITY AT 5 YEAR PEAK
HORIZ	HORIZONTAL	VC	VERTICAL CURVE
HP	HIGH POINT	VEL	VELOCITY
ID	INSIDE DIAMETER	VERT	VERTICAL
IE	INVERT ELEVATION	VG	VALLEY GUTTER
INT	INTERSECTION	W	WEST
IRR	IRRIGATION	W/G	WATER AND GAS
LAT	LATERAL	WL	WATER LINE
LF	LINEAR FEET	WM	WATER METER
LP	LOW POINT	WS	WATER SURFACE
LT	LEFT	WV	WATER VALVE
MAX	MAXIMUM	WWF	WELDED WIRE FABRIC
MDD	MAXIMUM DRY DENSITY	YR	YEAR
MH	MANHOLE		
MIN	MINIMUM		
MJ	MECHANICAL JOINT		
MMD	MAXIMUM MARSHALL DENSITY		
MUTCD	MANUAL FOR TRAFFIC CONTROL DEVICES		



Know what's below.
Call before you dig.

NOTES:

GENERAL

- ALL WORK SHALL CONFORM TO THE STANDARD SPECIFICATIONS FOR PUBLIC WORKS CONSTRUCTION, 2012 EDITION, INCLUDING ALL APPROVED REVISIONS.
- THE CONTRACTOR SHALL REFER TO THE STANDARD DETAILS FOR PUBLIC WORKS CONSTRUCTION, AS ADOPTED BY THE CITY OF SPARKS, FOR ALL DETAILING NOT SHOWN ON THESE PLANS.
- CONSTRUCTION SHALL COMPLY WITH THESE PLANS AND CURRENT SPARKS (STANDARD SPECIFICATIONS) AND MANUAL ON UNIFORM TRAFFIC CONTROL DEVICES (MUTCD).
- THE CITY OF SPARKS SHALL BE RESPONSIBLE FOR ARRANGING A PRE-CONSTRUCTION JOB SITE CONFERENCE WITH GOVERNING AGENCIES, ALL UTILITY COMPANIES, OWNER'S REPRESENTATIVES, AND THE PROJECT ENGINEER PRIOR TO COMMENCING WORK. THIS MEETING SHALL BE HELD AT LEAST FORTY-EIGHT (48) HOURS, OR TWO (2) BUSINESS DAYS, PRIOR TO THE START OF CONSTRUCTION AND SHALL COMMUNICATE SCHEDULES, CONTRACTORS MEAN AND METHODS, MATERIALS TO BE USED, AND OTHER RELEVANT MATTERS ASSOCIATED WITH THE CONSTRUCTION OF THE PROJECT.
- ALL WORK EITHER DIRECTLY OR INDIRECTLY RELATED TO THE PROJECT SHALL BE COORDINATED WITH THE APPROPRIATE UTILITY SYSTEM MANAGER.
- THE CONTRACTOR SHALL MAINTAIN AN ONSITE RECORD COPY OF ALL DRAWINGS, SPECIFICATIONS, ADDENDA, CHANGE ORDERS, WORK CHANGE DIRECTIVES, FIELD ORDERS, FIELD CHANGES, AND WRITTEN INTERPRETATIONS AND CLARIFICATIONS. RECORDS SHALL BE IN GOOD ORDER AND ANNOTATED TO SHOW CHANGES MADE DURING CONSTRUCTION.
- CONTRACTOR SHALL PROVIDE MATERIALS AND EQUIPMENT SUBMITTALS AND/OR SHOP DRAWINGS TO THE PROJECT ENGINEER FOR REVIEW PRIOR TO ORDERING OR INSTALLATION. A SIGNED SET OF REVIEWED SUBMITTALS MUST ALWAYS BE AVAILABLE ONSITE DURING CONSTRUCTION.
- THE CONTRACTOR SHALL CALL UNDERGROUND SERVICE ALERT AT 811 TO PROVIDE FIELD LOCATIONS OF UNDERGROUND UTILITIES PRIOR TO THE START OF CONSTRUCTION.
- THE LOCATION OF EXISTING UTILITIES SHOWN ON THESE PLANS ARE BASED ON THE BEST INFORMATION AVAILABLE TO THE ENGINEER. IT SHALL BE THE CONTRACTOR'S RESPONSIBILITY TO VERIFY PROPOSED POINTS OF CONNECTION AND IN AREAS OF POSSIBLE CONFLICT WITH NEW UTILITY INSTALLATION PRIOR TO BEGINNING CONSTRUCTION. SHOULD THE CONTRACTOR FIND ANY DISCREPANCIES BETWEEN THE CONDITIONS EXISTING IN THE FIELD AND THE INFORMATION SHOWN ON THESE DRAWINGS, THE CONTRACTOR SHALL NOTIFY THE ENGINEER BEFORE PROCEEDING WITH CONSTRUCTION. IT IS THE CONTRACTOR'S RESPONSIBILITY TO PROTECT AND MAINTAIN ALL EXISTING UTILITIES WHETHER OR NOT SHOWN ON THE PLAN.
- THE CONTRACTOR SHALL BE RESPONSIBLE TO PROCURE ALL NECESSARY PERMITS, LICENSES, INSURANCE POLICIES, ETC. AS MAY BE NECESSARY TO COMPLY WITH LOCAL, COUNTY, STATE, AND FEDERAL LAWS ASSOCIATED WITH THE PERFORMANCE OF THE WORK, UNLESS OTHERWISE OBTAINED BY THE OWNER.
- THE CONTRACTOR SHALL PREPARE A TRAFFIC CONTROL PLAN AND PROVIDE, PLACE, AND MAINTAIN ALL LIGHTS, SIGNS, BARRICADES, FLAG PERSONS, PILOT CAR, OR OTHER DEVICES NECESSARY TO CONTROL TRAFFIC THROUGH THE CONSTRUCTION AREA AND FOR PUBLIC SAFETY. ALL TRAFFIC CONTROL OPERATIONS SHALL COMPLY WITH THE LATEST MUTCD. AT NO TIME WILL OBSTRUCTIONS BE LEFT IN THE ROADWAY DURING NIGHT HOURS. ALL TRAFFIC CONTROL PLANS SHALL BE PREPARED BY A REGISTERED CIVIL ENGINEER OR AT TSA CERTIFIED PERSONNEL.
- THE CONTRACTOR AGREES TO ASSUME SOLE RESPONSIBILITY FOR JOB SITE CONDITIONS DURING THE COURSE OF CONSTRUCTION OF THIS PROJECT, INCLUDING SAFETY OF ALL PERSONS AND PROPERTY, AND FURTHER AGREES THAT THIS REQUIREMENT SHALL APPLY CONTINUOUSLY AND NOT BE LIMITED TO NORMAL WORKING HOURS IN ACCORDANCE WITH THE PROVISIONS OUTLINED BY THE PROJECT CONTROL AND THE STANDARD SPECIFICATIONS.
- THE CONTRACTOR SHALL BE SOLELY AND COMPLETELY RESPONSIBLE FOR COMPLIANCE WITH ALL APPLICABLE PROVISIONS OF OSHA AND NRS CHAPTER 618.
- THE CONTRACTOR SHALL PURSUE THE WORK IN A CONTINUOUS AND DILIGENT MANNER, CONFORMING TO ALL THE PERTINENT SAFETY REGULATIONS TO ENSURE A TIMELY COMPLETION OF THE PROJECT.
- THE CONTRACTOR SHALL MAINTAIN A CLEAN PROJECT SITE, REMOVING CONSTRUCTION DEBRIS AT THE END OF EACH ACTIVITY DAY. THE CONTRACTOR SHALL MAINTAIN DEBRIS FREE CONSTRUCTION ROUTES, ADJACENT STREETS AND STORM DRAIN SYSTEMS.
- TEMPORARY CONSTRUCTION FENCING SHALL BE PROVIDED AND MAINTAINED BY THE CONTRACTOR THROUGHOUT THE DURATION OF THE PROJECT IN AREAS AS DELINEATED ON THE PLANS OR AS DIRECTED BY THE PROJECT ENGINEER. THE TEMPORARY FENCING SHALL PREVENT CHILDREN AND PETS FROM ENTERING THE CONSTRUCTION AREA, CREATE A VISUAL BARRIER OF THE CONSTRUCTION ACTIVITIES FROM THE ADJACENT RESIDENCE AND YARDS, AND PROTECT VEGETATION FROM CONSTRUCTION EQUIPMENT.
- THE CONTRACTOR SHALL USE ONLY AUTHORIZED SITES FOR STORAGE OF EQUIPMENT AND MATERIALS AND OBTAIN PROPER APPROVALS FROM THE LAND OWNER AND LOCAL GOVERNING AUTHORITY TO DO SO. CONTRACTOR SHALL BE RESPONSIBLE FOR THE SECURITY OF ALL EQUIPMENT AND MATERIALS.
- CONTRACTOR SHALL APPLY FOR A TEMPORARY USE PERMIT WITH THE CITY AND COMPLY WITH ALL CONDITIONS AND REQUIREMENTS ISSUED BY THE CITY.
- CONTRACTOR SHALL BE RESPONSIBLE FOR THE PROTECTION OF ALL EXISTING SURVEY MONUMENTS AND OTHER SURVEY MARKERS DURING CONSTRUCTION. IN THE EVENT A MONUMENT IS DISTURBED, THE CONTRACTOR SHALL HAVE THE MONUMENT REPLACED, AT HIS OWN EXPENSE, BY A LICENSED SURVEYOR IN THE STATE OF NEVADA.
- ALL FIELD CHANGES MUST BE PRE-APPROVED BY THE PROJECT ENGINEER.
- SHOULD IT APPEAR THAT THE WORK TO BE DONE, OR ANY MATTER RELATIVE THERETO, IS NOT SUFFICIENTLY DETAILED OR EXPLAINED ON THESE PLANS, THE CONTRACTOR SHALL CONTACT THE PROJECT ENGINEER FOR SUCH FURTHER EXPLANATIONS AS MAY BE NECESSARY.
- ALL SALVAGED MATERIALS ARE THE PROPERTY OF THE OWNER AND SHALL BE PALLETIZED ONSITE UNLESS OTHERWISE ARRANGED WITH THE OWNER AND/OR PROJECT ENGINEER.

UNDERGROUND UTILITIES

- THE CONTRACTOR SHALL FIELD VERIFY UTILITY LOCATIONS NEAR OR WITHIN THE CONSTRUCTION LIMITS WITH THE RESPECTIVE UTILITY COMPANIES PRIOR TO BEGINNING CONSTRUCTION. IT SHALL BE THE RESPONSIBILITY OF THE CONTRACTOR TO ARRANGE FOR THE NECESSARY RELOCATION OF ANY UTILITY. THE CONTRACTOR SHALL NOTIFY ALL UTILITY COMPANIES INVOLVED AT LEAST FORTY-EIGHT (48) HOURS PRIOR TO BEGINNING WORK.
- NO OTHER UTILITIES MAY BE PLACED IN A WATER OR SEWER TRENCH.
- ALL VALVE BOXES, MANHOLE STRUCTURES, AND CLEAN OUTS SHALL BE MARKED AND ACCESSIBLE AT ALL TIMES.

GRADING, EXCAVATION & SURFACE IMPROVEMENTS

- THE CONTRACTOR IS RESPONSIBLE FOR PERFORMING THEIR OWN QUANTITY TAKE-OFF AND SHALL BUDGET THE PROJECT ACCORDINGLY. ALL EXCESS GRADING MATERIALS SHALL BE DISPOSED OF OFFSITE.
- THE SOILS ENGINEER SHALL APPROVE ALL EARTHWORK AND GRADING TO CONFIRM COMPACTION REQUIREMENTS ARE MET.
- CONTRACTOR SHALL PROTECT EXISTING PAVING, CONCRETE, LANDSCAPING, FENCING, MAILBOXES, SIGNS AND ANY OTHER IMPROVEMENTS NOT SPECIFICALLY CALLED OUT FOR REPLACEMENT. CONTRACTOR SHALL REPAIR/REPLACE ANYTHING DAMAGED BY FORCES UNDER THEIR EMPLOY OR CONTRACT.
- ALL ASPHALT CONCRETE SURFACES SHALL BE SAWCUT TO A NEAT, STRAIGHT LINE AND REMOVED. THE EXPOSED PAVEMENT TIE-IN EDGES SHALL BE METICULOUSLY CLEANED OF ALL LOOSE MATERIAL AND THEN TREATED WITH BITUMINOUS EMULSION PRIOR TO PAVING. THE EXPOSED BASE MATERIALS SHALL BE GRADED AND RECOMPACTED PRIOR TO PAVING.

ENVIRONMENTAL

- CONSTRUCTION SHALL BE PERFORMED IN COMPLIANCE WITH THE NATIONAL POLLUTANT DISCHARGE ELIMINATION SYSTEM (NPDES). CONTRACTOR IS RESPONSIBLE FOR ACQUIRING AND MAINTAINING A SWPPP.
- INSTALLATION AND MAINTENANCE OF EROSION CONTROL MEASURES ARE THE RESPONSIBILITY OF THE CONTRACTOR. THE CONTRACTOR SHALL BE RESPONSIBLE FOR THE PREVENTION OF EROSION AND SILTATION FROM ENTERING THE STORM DRAIN SYSTEM, NATURAL DRAINAGE COURSES, AND/OR INTRUDING UPON ADJACENT ROADWAYS AND PROPERTIES. EROSION CONTROL MEASURES SHOWN ON THESE PLANS ARE INTENDED AS A GUIDE. ADDITIONAL EROSION CONTROL MEASURES MAY BE REQUIRED AS DETERMINED IN THE FIELD. THIS RESPONSIBILITY SHALL APPLY THROUGHOUT THE COURSE OF CONSTRUCTION AND UNTIL ALL DISTURBED AREAS HAVE BECOME STABILIZED AND SHALL NOT BE LIMITED TO WET WEATHER PERIODS. THE CONTRACTOR IS RESPONSIBLE FOR SWPPP UPDATES.
- THE CONTRACTOR SHALL MAINTAIN AN ON-GOING DUST CONTROL PROGRAM INCLUDING WATERING OF OPEN AREAS, TO CONFORM WITH THE LATEST FEDERAL, STATE, AND COUNTY AIR POLLUTION REGULATIONS. CONTRACTOR IS RESPONSIBLE FOR OBTAINING AND UPDATING DUST CONTROL PERMITS FOR THE PROJECT.
- PROTECTIVE MEASURES AND TEMPORARY DRAINAGE PROVISIONS SHALL BE USED TO PROTECT ADJOINING PROPERTIES DURING CONSTRUCTION OF IMPROVEMENTS.
- AFTER A RAINSTORM, ALL SILT AND DEBRIS SHALL BE REMOVED FROM CHECK BERMS AND DESILTING FACILITIES. GRADED SLOPE SURFACE PROTECTION MEASURES DAMAGED DURING THE RAINSTORM SHALL ALSO BE REPAIRED.
- FILL SLOPES AT THE PROJECT PERIMETER MUST DRAIN AWAY FROM THE TOP OF THE SLOPE AT THE END OF EACH WORKING DAY.
- ALL DISTURBED AREAS ARE REQUIRED TO HAVE A PALLIATIVE APPLIED FOR DUST CONTROL. ALL GRADING SHALL COMPLY WITH STATE AND COUNTY REGULATIONS. IF GROUNDWATER IS ENCOUNTERED, THE CONTRACTOR SHALL STOP WORK IMMEDIATELY, PREPARE A DEWATERING PLAN, AND OBTAIN APPROVAL FROM THE PROJECT ENGINEER BEFORE PROCEEDING WITH WORK. DEWATERING ACTIVITIES MAY REQUIRE THE CONTRACTOR TO OBTAIN A DISCHARGE/PUMPING PERMIT FROM THE STATE. IT SHALL BE THE CONTRACTOR'S RESPONSIBILITY TO OBTAIN SUCH PERMITS.
- ALL STREETS SHALL BE MAINTAINED FREE OF DUST AND MUD CAUSED BY GRADING OPERATIONS.



950 SANDHILL ROAD, SUITE 100
RENO, NV 89521
TEL: 775.827.6111

WWW.LUMOSINC.COM
INFO@LUMOSINC.COM

© LUMOS & ASSOCIATES, INC. THIS DRAWING IS THE PROPERTY OF LUMOS & ASSOCIATES, INC. USE OR REPRODUCTION OF THIS DRAWING, IN WHOLE OR IN PART, WITHOUT THE WRITTEN PERMISSION OF LUMOS & ASSOCIATES, INC. IS STRICTLY PROHIBITED. THIS DRAWING IS NOT TO BE USED FOR ANY PROJECT OTHER THAN THE PROJECT FOR WHICH IT WAS PREPARED.



03/19/26

CITY OF SPARKS

NEVADA

WASHOE COUNTY

SPARKS

CDBG PHASE 3
12TH & 13TH STREET
NOTES SHEET

REV	DATE	DESCRIPTION

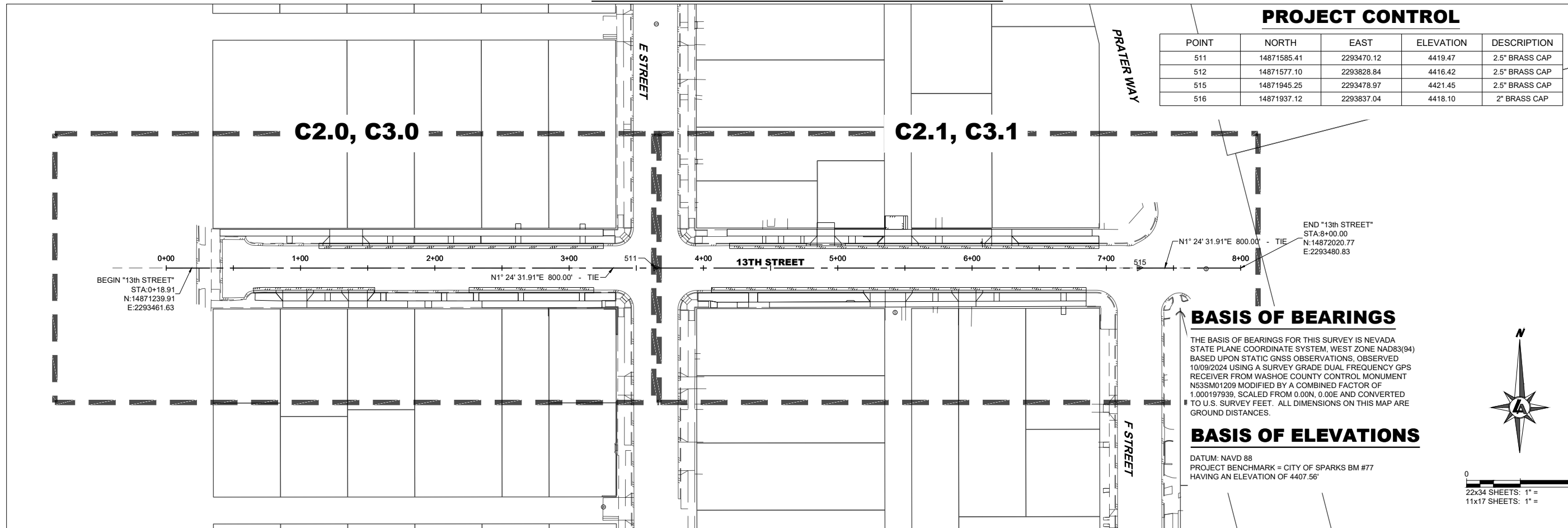
BAR IS 1 INCH ON ORIGINAL DRAWING

0 1"
IF NOT ONE INCH ON THIS SHEET, ADJUST SCALES ACCORDINGLY

C1.1

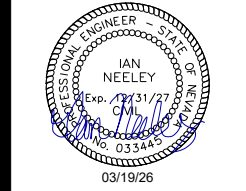
DRAWN BY: NAC/AH
DESIGNED BY: NAC/AH
CHECKED BY: IPN
JOB NO.: 10415.004

"13TH STREET" ALIGNMENT



950 SANDHILL ROAD, SUITE 100
 RENO, NV 89521
 TEL: 775.827.6111
 WWW.LUMOSINC.COM
 INFO@LUMOSINC.COM

© LUMOS & ASSOCIATES, INC. THIS DRAWING IS THE PROPERTY OF LUMOS & ASSOCIATES, INC. USE OR REPRODUCTION OF THIS DRAWING, IN WHOLE OR IN PART, WITHOUT THE WRITTEN PERMISSION OF LUMOS & ASSOCIATES, INC. IS STRICTLY PROHIBITED. THIS DRAWING IS NOT TO BE USED FOR ANY PROJECT OTHER THAN THE PROJECT FOR WHICH IT WAS PREPARED.

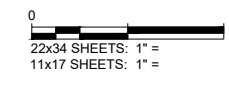
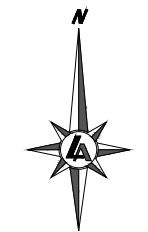


BASIS OF BEARINGS

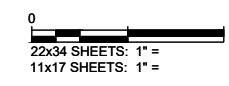
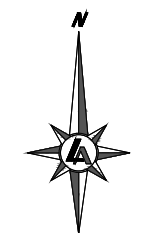
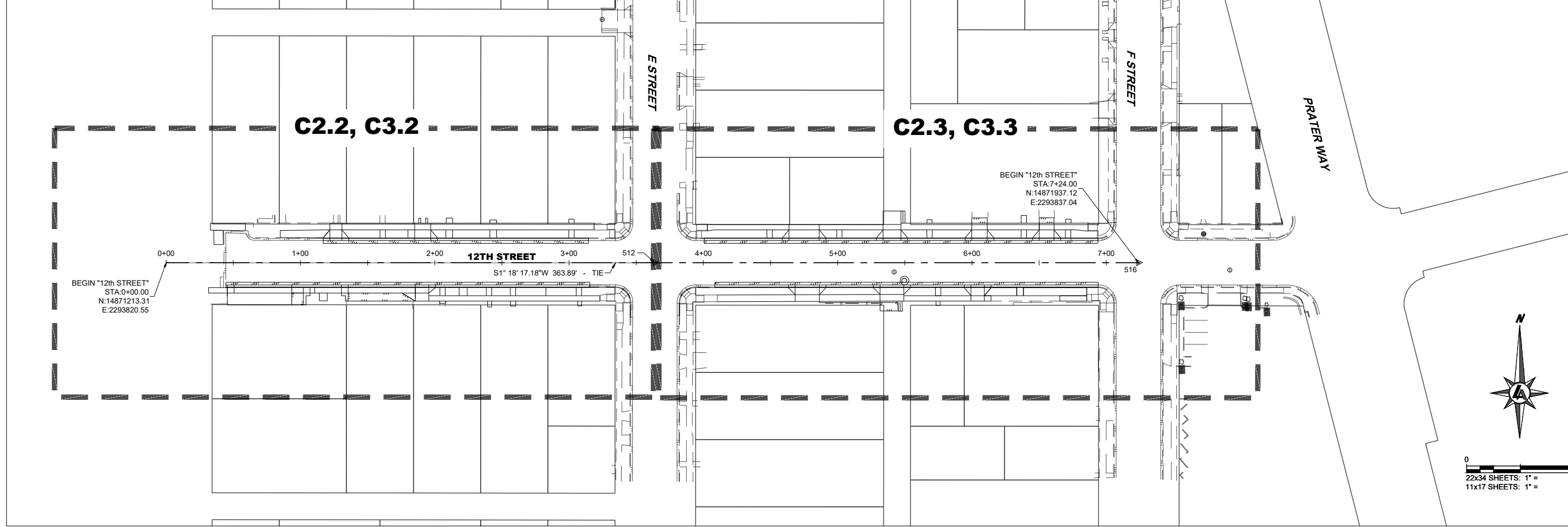
THE BASIS OF BEARINGS FOR THIS SURVEY IS NEVADA STATE PLANE COORDINATE SYSTEM, WEST ZONE NAD83(94) BASED UPON STATIC GNSS OBSERVATIONS, OBSERVED 10/09/2024 USING A SURVEY GRADE DUAL FREQUENCY GPS RECEIVER FROM WASHOE COUNTY CONTROL MONUMENT N53SM01209 MODIFIED BY A COMBINED FACTOR OF 1.000197939, SCALED FROM 0.00N, 0.00E AND CONVERTED TO U.S. SURVEY FEET. ALL DIMENSIONS ON THIS MAP ARE GROUND DISTANCES.

BASIS OF ELEVATIONS

DATUM: NAVD 88
 PROJECT BENCHMARK = CITY OF SPARKS BM #77
 HAVING AN ELEVATION OF 4407.56'



"12TH STREET" ALIGNMENT



CITY OF SPARKS
 CDBG PHASE 3
 12TH & 13TH STREET
 INDEX
 WASHOE COUNTY
 SPARKS
 NEVADA

REV	DATE	DESCRIPTION

BAR IS 1 INCH ON ORIGINAL DRAWING
 IF NOT ONE INCH ON THIS SHEET, ADJUST SCALES ACCORDINGLY

C1.2

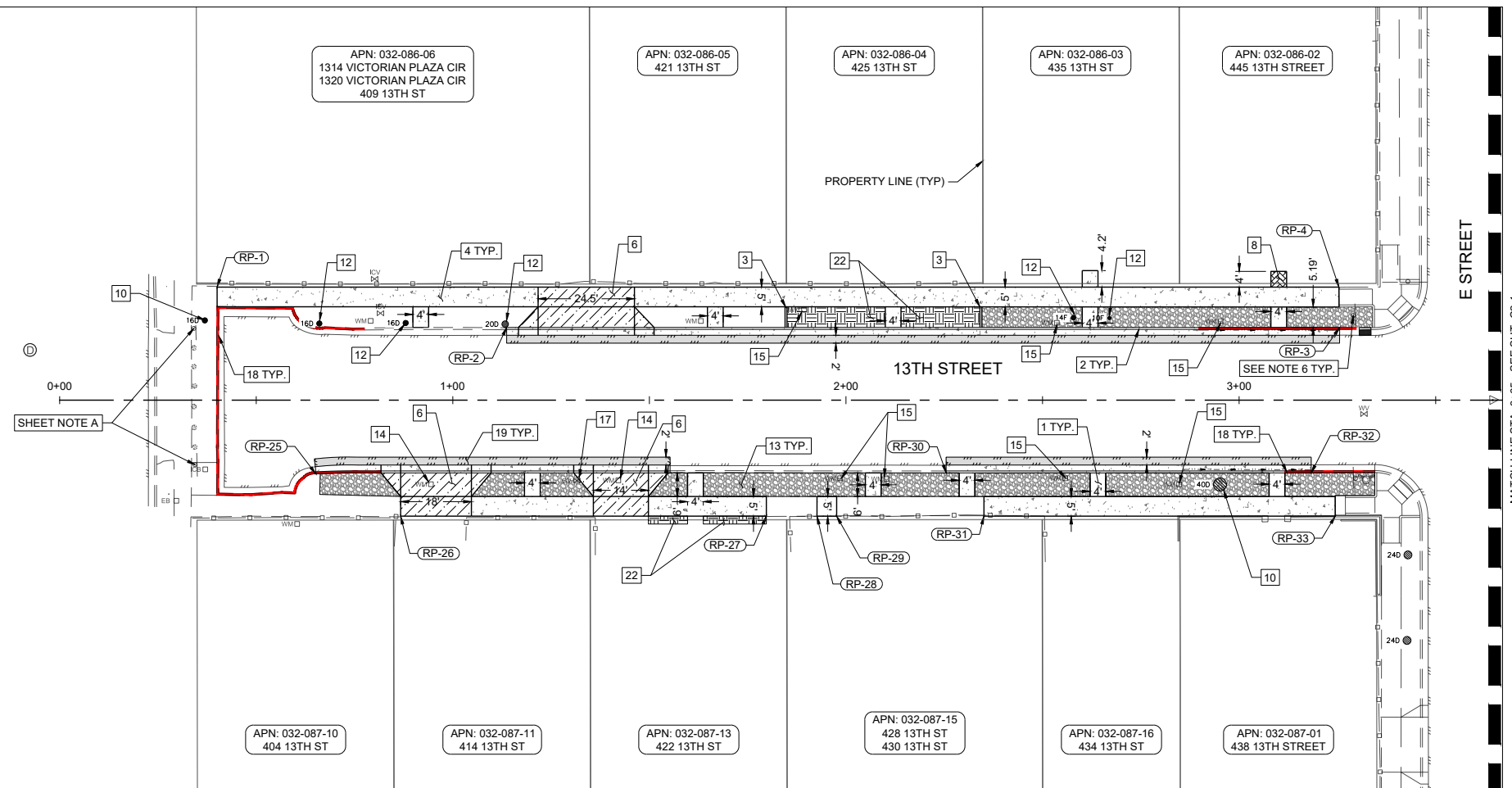
DRAWN BY: NAC/AAH
 DESIGNED BY: NAC/AAH
 CHECKED BY: IPN
 JOB NO.: 10415.004

L:\AP\10415.004 - CoS CDBG Phase 3 Design\3-Design\DWG\Civil\Sheets\10415004 - Title and Notes Sheets.dwg,C1.2, 03/19/2026 11:22 am aherickson

BID SET
 NOT FOR CONSTRUCTION
 MARCH 2026



03/19/26



MATCH LINE STA. 3+65 - SEE SHT. C2.1



0 20' 40'
22x34 SHEETS: 1" = 20'
11x17 SHEETS: 1" = 40'

SHEET C2.0 SURFACE IMPROVEMENT QUANTITIES

NO.	IMPROVEMENT TYPE	UNIT	QTY.	DETAIL	SHEET
1	REMOVE EXISTING AND CONSTRUCT PCC ENTRYWAY	SF	249	S-103	D1.0
2	REMOVE EXISTING AND CONSTRUCT PCC TYPE 1 CURB & GUTTER	LF	395	S-109 & 1 & 5	D1.0
3	REMOVE EXISTING AND CONSTRUCT PCC DRIVEWAY TRANSITION CURB/POST CURB (CONTINGENT ITEM)	LF	11	1	D1.0
4	REMOVE EXISTING AND CONSTRUCT PCC SIDEWALK	SF	2,103	S-103	D1.0
5	REMOVE EXISTING AND CONSTRUCT PCC COMMERCIAL DRIVEWAY	SF	-	S111-A & 1 & 3 & 4	D1.1
6	REMOVE EXISTING AND CONSTRUCT PCC RESIDENTIAL DRIVEWAY	SF	690	S111-A & 1 & 2	D1.1
7	REMOVE EXISTING AND CONSTRUCT REINFORCED PCC VALLEY GUTTER	SF	-	S-108	D1.0
8	REMOVE, SALVAGE, AND REINSTALL PAVER DRIVEWAY/WALKWAY	SF	16	-	-
9	FURNISH AND INSTALL NEW POST AND ANCHOR, SALVAGE AND REINSTALL ALL EXISTING SIGN PANELS	EA	-	-	-
10	REMOVE AND DISPOSE OF TREE	EA	2	-	-
11	GRIND AND DISPOSE OF EXISTING TREE STUMP	EA	-	-	-
12	PERFORM ROOT MITIGATION BY AN ISA CERTIFIED ARBORIST (CONTINGENT ITEM)	EA	5	4	D1.0
13	REMOVE EXISTING AND PLACE DECOMPOSED GRANITE	SF	1,683	2	D1.2
14	REMOVE EXISTING AND INSTALL AND ADJUST NEW STANDARD OR TRAFFIC RATED SINGLE WATER METER BOX (TMWA FURNISHED) TO NEW FINISH GRADE (CONTINGENT ITEM)	EA	2	S-407G & S-407H	D1.3
15	PROTECT AND ADJUST STANDARD SINGLE WATER METER BOXES TO NEW FINISH GRADE (CONTINGENT ITEM)	EA	7	S-407G & S-407H	D1.3
16	PROTECT AND ADJUST MANHOLE STRUCTURE (NEW OR EXISTING) TO FINISH GRADE WITH NEW PCC COLLAR, AND PROVIDE NEW 24" FRAME & COVER	EA	-	S-407G & S-407H	D1.3
17	PROTECT AND ADJUST UTILITY VALVE TO FINISH GRADE	EA	1	2	D1.3
18	PAINT CURB	LF	194	-	-
19	REMOVE EXISTING AND PLACE 2-FOOT WIDE 4-INCH PLANTMIX BITUMINOUS PATCH	SF	791	S-115	D1.2
20	REMOVE EXISTING AND PLACE 3-INCH PLANTMIX BITUMINOUS DRIVEWAY TRANSITION	SF	-	1	D1.2
21	REMOVE AND REPLACE 3', 4', OR 6' HIGH FENCING AND GATES (CHAIN-LINK, WOOD, WROUGHT IRON), (CONTINGENT ITEM)	LF	25	3 & 4 & 5	D1.2
22	LANDSCAPE RESTORATION	SF	289	2 & 3	D1.0
23	REMOVE EXISTING AND CONSTRUCT PCC MOW STRIP	LF	-	5	D1.1

REFERENCE POINT (RP) TABLE

POINT #	STATION/OFFSET	DESCRIPTION
1	"13TH" 0+40.05, 28.75' LT	BEGIN SW
2	"13TH" 1+13.70, 18.50' LT	BEGIN C&G
3	"13TH" 3+25.58, 18.50' LT	END C&G
4	"13TH" 3+25.38, 28.75' LT	END SW
25	"13TH" 0+65.16, 18.75' RT	BEGIN C&G
26	"13TH" 0+86.73, 29.50' RT	BEGIN SW
27	"13TH" 1+79.75, 29.50' RT	END SW
28	"13TH" 1+92.63, 29.50' RT	BEGIN SW
29	"13TH" 1+97.63, 29.50' RT	END SW
30	"13TH" 2+25.49, 18.50' RT	BEGIN C&G
31	"13TH" 2+35.09, 29.50' RT	BEGIN SW
32	"13TH" 3+18.33, 18.50' RT	END C&G
33	"13TH" 3+24.44, 29.50' RT	END SW

GENERAL NOTES:

- CONTRACTOR TO PROTECT EXISTING CONCRETE FLATWORK AND CURB & GUTTER UNLESS DESIGNATED FOR REMOVAL AND REPLACEMENT. CONTRACTOR TO REPLACE FULL SIDEWALK PANEL WIDTH AS INDICATED IN PLANS.
- THE LOCATION OF EXISTING UTILITIES SHOWN ON THESE PLANS ARE BASED ON THE BEST INFORMATION AVAILABLE TO THE ENGINEER. IT SHALL BE THE CONTRACTOR'S RESPONSIBILITY TO VERIFY PROPOSED POINTS OF CONNECTION AND IN AREAS OF POSSIBLE CONFLICT WITH THE NEW UTILITY INSTALLATION PRIOR TO BEGINNING CONSTRUCTION. SHOULD THE CONTRACTOR FIND ANY DISCREPANCIES BETWEEN THE CONDITIONS EXISTING IN THE FIELD AND THE INFORMATION SHOWN ON THESE DRAWINGS, THE CONTRACTOR SHALL NOTIFY THE ENGINEER BEFORE PROCEEDING WITH CONSTRUCTION. IT IS THE CONTRACTOR'S RESPONSIBILITY TO PROTECT AND MAINTAIN ALL EXISTING UTILITIES WHETHER OR NOT SHOWN ON THE PLAN.
- CONTRACTOR TO REMOVE, SALVAGE AND REPLACE OR REPLACE IN-KIND, LANDSCAPING FOR EACH PROPERTY AS IS NECESSARY TO COMPLETE CONSTRUCTION AND PROVIDE POSITIVE DRAINAGE AT NO DIRECT PAYMENT. LANDSCAPING INCLUDES, BUT IS NOT LIMITED TO, KEYSTONE WALLS, LANDSCAPE WALLS, SOD, IRRIGATION, BUSHES, ROCK MULCH, LARGE ROCK, ORNAMENTAL CONCRETE, MAILBOXES, FENCING, ETC.
- BUSHES AND TREES SHALL BE TRIMMED OR REMOVED AS NECESSARY FOR CONSTRUCTION BY AN ISA CERTIFIED ARBORIST. NO DIRECT PAYMENT FOR THIS WORK.
- COORDINATE WITH TMWA FOR WATER METER BOX REPLACEMENTS AND METER SETTER ADJUSTMENTS. CONTRACTOR TO REMOVE, SALVAGE AND REINSTALL EXISTING METER BOX UNLESS DESIGNATED FOR REPLACEMENT. TMWA WILL FURNISH THE WATER METER BOX (STANDARD OR TRAFFIC RATED) IF IT NEEDS REPLACED.
- TRAFFIC SIGNS NOT DESIGNATED FOR REPLACEMENT SHALL BE PROTECTED IN PLACE AT NO DIRECT PAYMENT.
- ALL PCC WALKWAYS TO BE 4' WIDE UNLESS OTHERWISE NOTED.
- ALL TMWA WATER METER BOXES TO BE ADJUSTED TO FINISH GRADE IN DECOMPOSED GRANITE AREAS.
- TREES WITHIN PROPOSED DECOMPOSED GRANITE SECTION SHALL BE PROTECTED IN PLACE AND A TREE WELL CONSTRUCTED WITH 2'X4' REDWOOD O.A.E. SHALL BE INSTALLED AT NO DIRECT PAYMENT.

SHEET NOTES:

- A. CONTRACTOR TO REMOVE SIGN POST AND ANCHOR AT NO DIRECT PAYMENT.

IMPROVEMENT LEGEND

- BITUMINOUS PAVEMENT PATCH
- PCC SIDEWALK OR FLATWORK
- DECOMPOSED GRANITE
- PCC COMMERCIAL DRIVEWAY APRON AND TRANSITION
- PCC RESIDENTIAL DRIVEWAY
- LANDSCAPING
- PAVERS
- PCC TYPE 1 CURB AND GUTTER
- PCC ROLLED CURB AND GUTTER

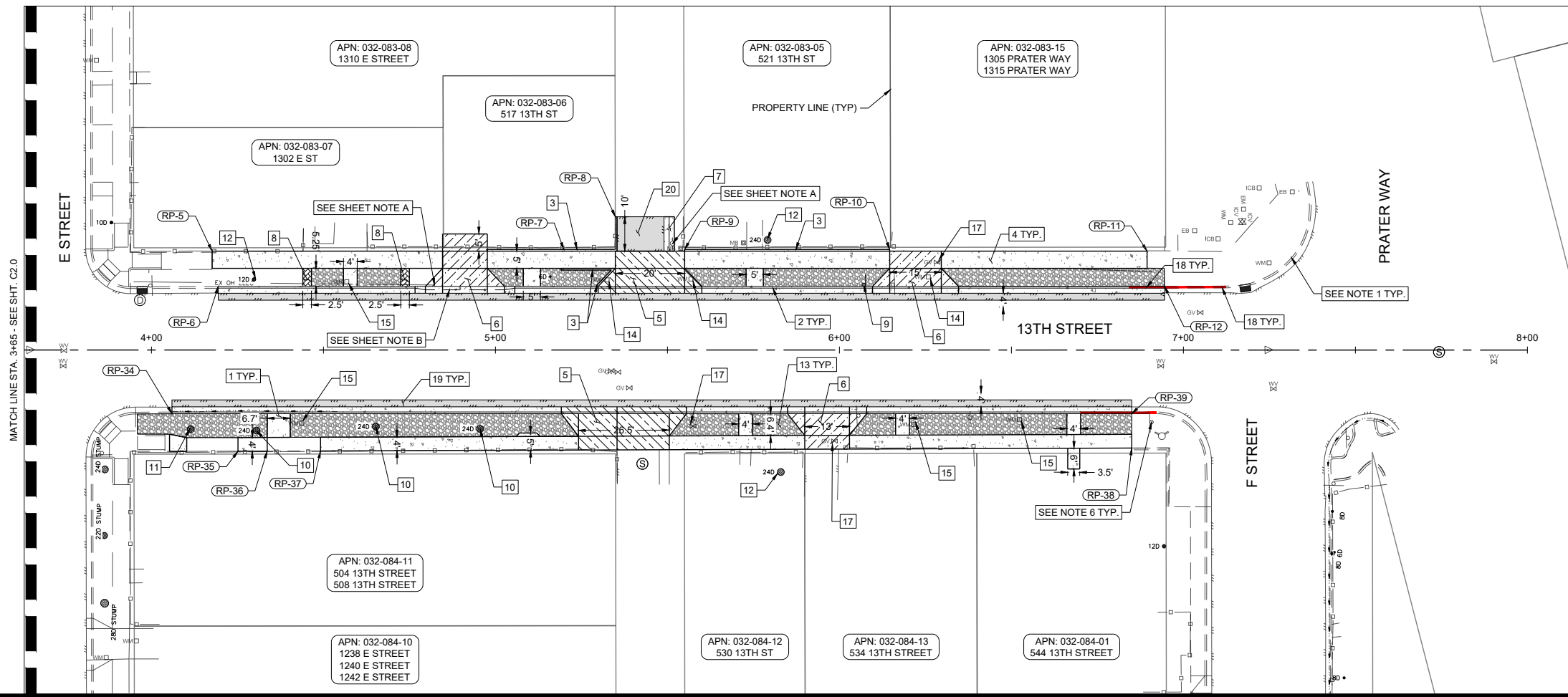
CITY OF SPARKS
CDBG PHASE 3
SURFACE IMPROVEMENTS
"13TH STREET" STA 0+00 TO 3+65
SPARKS
NEVADA

REV.	DATE	DESCRIPTION

BAR IS 1 INCH ON ORIGINAL DRAWING
0 1'
IF NOT ONE INCH ON THIS SHEET, ADJUST SCALES ACCORDINGLY
C2.0
DRAWN BY: NAC/AH
DESIGNED BY: NAC/AH
CHECKED BY: AJG
JOB NO.: 10415.004



03/19/26



SHEET C2.1 SURFACE IMPROVEMENT QUANTITIES

NO.	IMPROVEMENT TYPE	UNIT	QTY.	DETAIL	SHEET
1	REMOVE EXISTING AND CONSTRUCT PCC ENTRYWAY	SF	195	S-103	D1.0
2	REMOVE EXISTING AND CONSTRUCT PCC TYPE 1 CURB & GUTTER	LF	488	S-109 & 1 & 5	D1.0
3	REMOVE EXISTING AND CONSTRUCT PCC DRIVEWAY TRANSITION CURB/POST CURB (CONTINGENT ITEM)	LF	150	1	D1.0
4	REMOVE EXISTING AND CONSTRUCT PCC SIDEWALK	SF	1,988	S-103	D1.0
5	REMOVE EXISTING AND CONSTRUCT PCC COMMERCIAL DRIVEWAY	SF	677	S111-A & 1 & 3 & 4	D1.1
6	REMOVE EXISTING AND CONSTRUCT PCC RESIDENTIAL DRIVEWAY	SF	570	S111-A & 1 & 2	D1.1
7	REMOVE EXISTING AND CONSTRUCT REINFORCED PCC VALLEY GUTTER	SF	30	S-108	D1.0
8	REMOVE, SALVAGE, AND REINSTALL PAVER DRIVEWAY/WALKWAY	SF	27	-	-
9	FURNISH AND INSTALL NEW POST AND ANCHOR, SALVAGE AND REINSTALL ALL EXISTING SIGN PANELS	EA	1	-	-
10	REMOVE AND DISPOSE OF TREE	EA	3	-	-
11	GRIND AND DISPOSE OF EXISTING TREE STUMP	EA	1	-	-
12	PERFORM ROOT MITIGATION BY AN ISA CERTIFIED ARBORIST (CONTINGENT ITEM)	EA	3	4	D1.0
13	REMOVE EXISTING AND PLACE DECOMPOSED GRANITE	SF	2,269	2	D1.2
14	REMOVE EXISTING AND INSTALL AND ADJUST NEW STANDARD OR TRAFFIC RATED SINGLE WATER METER BOX (TMWA FURNISHED) TO NEW FINISH GRADE (CONTINGENT ITEM)	EA	3	S-407G & S-407H	D1.3
15	PROTECT AND ADJUST STANDARD SINGLE WATER METER BOXES TO NEW FINISH GRADE (CONTINGENT ITEM)	EA	4	S-407G & S-407H	D1.3
16	PROTECT AND ADJUST MANHOLE STRUCTURE (NEW OR EXISTING) TO FINISH GRADE WITH NEW PCC COLLAR, AND PROVIDE NEW 24" FRAME & COVER	EA	-	S-407G & S-407H	D1.3
17	PROTECT AND ADJUST UTILITY VALVE TO FINISH GRADE	EA	2	2	D1.3
18	PAINT CURB	LF	50	-	-
19	REMOVE EXISTING AND PLACE 2-FOOT WIDE 4-INCH PLANTMIX BITUMINOUS PATCH	SF	1,108	S-115	D1.2
20	REMOVE EXISTING AND PLACE 3-INCH PLANTMIX BITUMINOUS DRIVEWAY TRANSITION	SF	137	1	D1.2
21	REMOVE AND REPLACE 3', 4', OR 6' HIGH FENCING AND GATES (CHAIN-LINK, WOOD, WROUGHT IRON), (CONTINGENT ITEM)	LF	25	3 & 4 & 5	D1.2
22	LANDSCAPE RESTORATION	SF	-	2 & 3	D1.0
23	REMOVE EXISTING AND CONSTRUCT PCC MOW STRIP	LF	-	5	D1.1

REFERENCE POINT (RP) TABLE

POINT #	STATION/OFFSET	DESCRIPTION
5	"13TH" 4+17.63, 28.75' LT	BEGIN SW
6	"13TH" 4+19.41, 18.50' LT	BEGIN C&G
7	"13TH" 5+19.86, 29.25' LT	BEGIN POST CURB
8	"13TH" 5+34.86, 38.75' LT	END POST CURB
9	"13TH" 5+54.99, 29.25' LT	BEGIN POST CURB
10	"13TH" 6+14.58, 29.25' LT	END POST CURB
11	"13TH" 6+89.44, 28.75' LT	END SW
12	"13TH" 6+94.52, 18.50' LT	END C&G
34	"13TH" 4+05.98, 18.50' RT	BEGIN C&G
35	"13TH" 4+25.15, 29.45' RT	BEGIN SW
36	"13TH" 4+33.65, 29.41' RT	END SW
37	"13TH" 4+49.16, 29.36' RT	BEGIN SW
38	"13TH" 6+84.98, 28.50' RT	END SW
39	"13TH" 6+84.99, 18.50' RT	END C&G

GENERAL NOTES:

- CONTRACTOR TO PROTECT EXISTING CONCRETE FLATWORK AND CURB & GUTTER UNLESS DESIGNATED FOR REMOVAL AND REPLACEMENT. CONTRACTOR TO REPLACE FULL SIDEWALK PANEL WIDTH AS INDICATED IN PLANS.
- THE LOCATION OF EXISTING UTILITIES SHOWN ON THESE PLANS ARE BASED ON THE BEST INFORMATION AVAILABLE TO THE ENGINEER. IT SHALL BE THE CONTRACTOR'S RESPONSIBILITY TO VERIFY PROPOSED POINTS OF CONNECTION AND IN AREAS OF POSSIBLE CONFLICT WITH THE NEW UTILITY INSTALLATION PRIOR TO BEGINNING CONSTRUCTION. SHOULD THE CONTRACTOR FIND ANY DISCREPANCIES BETWEEN THE CONDITIONS EXISTING IN THE FIELD AND THE INFORMATION SHOWN ON THESE DRAWINGS, THE CONTRACTOR SHALL NOTIFY THE ENGINEER BEFORE PROCEEDING WITH CONSTRUCTION. IT IS THE CONTRACTOR'S RESPONSIBILITY TO PROTECT AND MAINTAIN ALL EXISTING UTILITIES WHETHER OR NOT SHOWN ON THE PLAN.
- CONTRACTOR TO REMOVE, SALVAGE AND REPLACE OR REPLACE IN-KIND, LANDSCAPING FOR EACH PROPERTY AS IS NECESSARY TO COMPLETE CONSTRUCTION AND PROVIDE POSITIVE DRAINAGE AT NO DIRECT PAYMENT. LANDSCAPING INCLUDES, BUT IS NOT LIMITED TO, KEYSTONE WALLS, LANDSCAPE WALLS, SOD, IRRIGATION, BUSHES, ROCK MULCH, LARGE ROCK, ORNAMENTAL CONCRETE, MAILBOXES, FENCING, ETC.
- BUSHES AND TREES SHALL BE TRIMMED OR REMOVED AS NECESSARY FOR CONSTRUCTION BY AN ISA CERTIFIED ARBORIST. NO DIRECT PAYMENT FOR THIS WORK.
- COORDINATE WITH TMWA FOR WATER METER BOX REPLACEMENTS AND METER SETTER ADJUSTMENTS. CONTRACTOR TO REMOVE, SALVAGE AND REINSTALL EXISTING METER BOX UNLESS DESIGNATED FOR REPLACEMENT. TMWA WILL FURNISH THE WATER METER BOX (STANDARD OR TRAFFIC RATED) IF IT NEEDS REPLACED.
- TRAFFIC SIGNS NOT DESIGNATED FOR REPLACEMENT SHALL BE PROTECTED IN PLACE AT NO DIRECT PAYMENT.
- ALL PCC WALKWAYS TO BE 4' WIDE UNLESS OTHERWISE NOTED.
- ALL TMWA WATER METER BOXES TO BE ADJUSTED TO FINISH GRADE IN DECOMPOSED GRANITE AREAS.
- TREES WITHIN PROPOSED DECOMPOSED GRANITE SECTION SHALL BE PROTECTED IN PLACE AND A TREE WELL CONSTRUCTED WITH 2'X4' REDWOOD O.A.E. SHALL BE INSTALLED AT NO DIRECT PAYMENT.

SHEET NOTES:

- CONTRACTOR TO PROTECT EXISTING POWER POLE IN PLACE AT NO DIRECT PAYMENT.
- ROLLED CURB AT THIS DRIVEWAY ONLY.

IMPROVEMENT LEGEND

- BITUMINOUS PAVEMENT PATCH
- PCC SIDEWALK OR FLATWORK
- DECOMPOSED GRANITE
- PCC COMMERCIAL DRIVEWAY APRON AND TRANSITION
- PCC RESIDENTIAL DRIVEWAY
- LANDSCAPING
- PAVERS
- PCC TYPE 1 CURB AND GUTTER
- PCC ROLLED CURB AND GUTTER

CITY OF SPARKS
 CDBG PHASE 3
 SURFACE IMPROVEMENTS
 "13TH STREET" STA 3+65 TO 8+00
 WASHOE
 NEVADA
 SPARKS

REV	DATE	DESCRIPTION

BAR IS 1 INCH ON ORIGINAL DRAWING

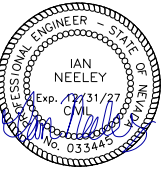
0 1"

IF NOT ONE INCH ON THIS SHEET, ADJUST SCALES ACCORDINGLY

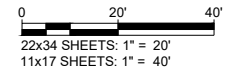
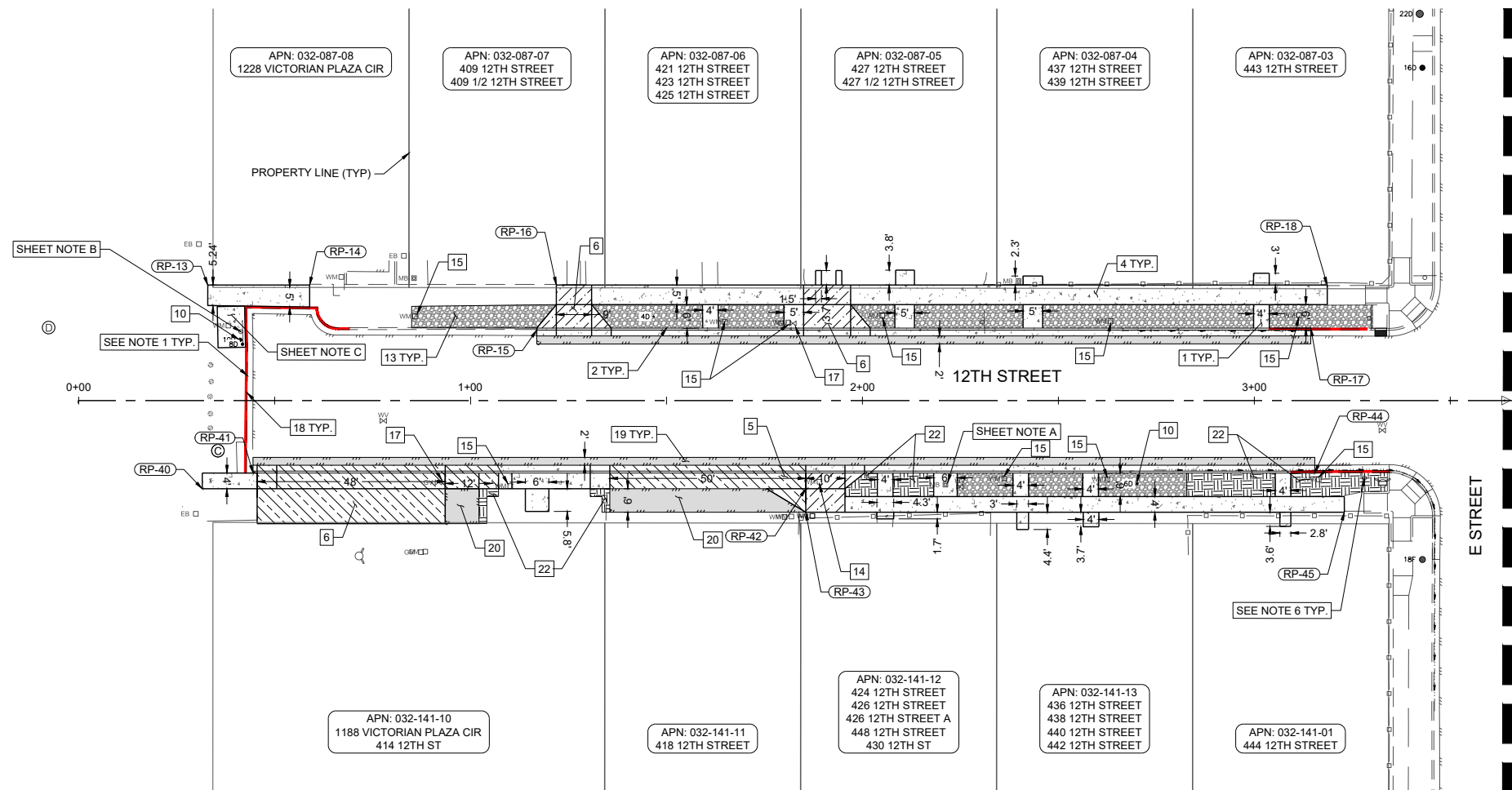
C2.1

DRAWN BY: NAC/AH
 DESIGNED BY: NAC/AH
 CHECKED BY: AJG
 JOB NO.: 10415.004

BID SET
NOT FOR CONSTRUCTION
MARCH 2026



03/19/26



SHEET C2.2 SURFACE IMPROVEMENT QUANTITIES

NO.	IMPROVEMENT TYPE	UNIT	QTY.	DETAIL	SHEET
1	REMOVE EXISTING AND CONSTRUCT PCC ENTRYWAY	SF	240	S-103	D1.0
2	REMOVE EXISTING AND CONSTRUCT PCC TYPE 1 CURB & GUTTER	LF	356	S-109 & 1 & 5	D1.0
3	REMOVE EXISTING AND CONSTRUCT PCC DRIVEWAY TRANSITION CURB/POST CURB (CONTINGENT ITEM)	LF	-	1	D1.0
4	REMOVE EXISTING AND CONSTRUCT PCC SIDEWALK	SF	1,924	S-103	D1.0
5	REMOVE EXISTING AND CONSTRUCT PCC COMMERCIAL DRIVEWAY	SF	1,129	S111-A & 1 & 3 & 4	D1.1
6	REMOVE EXISTING AND CONSTRUCT PCC RESIDENTIAL DRIVEWAY	SF	386	S111-A & 1 & 2	D1.1
7	REMOVE EXISTING AND CONSTRUCT REINFORCED PCC VALLEY GUTTER	SF	-	S-108	D1.0
8	REMOVE, SALVAGE, AND REINSTALL PAVER DRIVEWAY/WALKWAY	SF	-	-	-
9	FURNISH AND INSTALL NEW POST AND ANCHOR, SALVAGE AND REINSTALL ALL EXISTING SIGN PANELS	EA	-	-	-
10	REMOVE AND DISPOSE OF TREE	EA	2	-	-
11	GRIND AND DISPOSE OF EXISTING TREE STUMP	EA	-	-	-
12	PERFORM ROOT MITIGATION BY AN ISA CERTIFIED ARBORIST (CONTINGENT ITEM)	EA	-	4	D1.0
13	REMOVE EXISTING AND PLACE DECOMPOSED GRANITE	SF	1,456	2	D1.2
14	REMOVE EXISTING AND INSTALL AND ADJUST NEW STANDARD OR TRAFFIC RATED SINGLE WATER METER BOX (TMWA FURNISHED) TO NEW FINISH GRADE (CONTINGENT ITEM)	EA	1	S-407G & S-407H	D1.3
15	PROTECT AND ADJUST STANDARD SINGLE WATER METER BOXES TO NEW FINISH GRADE (CONTINGENT ITEM)	EA	9	S-407G & S-407H	D1.3
16	PROTECT AND ADJUST MANHOLE STRUCTURE (NEW OR EXISTING) TO FINISH GRADE WITH NEW PCC COLLAR, AND PROVIDE NEW 24\"/>				

REFERENCE POINT (RP) TABLE

POINT #	STATION/OFFSET	DESCRIPTION
13	"12TH" 0+32.95, 29.50' LT	BEGIN SW
14	"12TH" 0+58.95, 29.50' LT	END SW
15	"12TH" 1+16.89, 18.00' LT	BEGIN C&G
16	"12TH" 1+21.89, 29.50' LT	BEGIN SW
17	"12TH" 3+14.40, 18.50' LT	END C&G
18	"12TH" 3+18.60, 29.50' LT	END SW
40	"12TH" 0+31.53, 22.50' RT	BEGIN SW
41	"12TH" 0+44.50, 18.50' RT	BEGIN C&G
42	"12TH" 1+85.53, 22.50' RT	END 4' SW
43	"12TH" 1+85.53, 28.50' RT	BEGIN 4' SW
44	"12TH" 3+15.44, 18.50' RT	END C&G
45	"12TH" 3+22.97, 28.50' RT	END SW

GENERAL NOTES:

- CONTRACTOR TO PROTECT EXISTING CONCRETE FLATWORK AND CURB & GUTTER UNLESS DESIGNATED FOR REMOVAL AND REPLACEMENT. CONTRACTOR TO REPLACE FULL SIDEWALK PANEL WIDTH AS INDICATED IN PLANS.
- THE LOCATION OF EXISTING UTILITIES SHOWN ON THESE PLANS ARE BASED ON THE BEST INFORMATION AVAILABLE TO THE ENGINEER. IT SHALL BE THE CONTRACTOR'S RESPONSIBILITY TO VERIFY PROPOSED POINTS OF CONNECTION AND IN AREAS OF POSSIBLE CONFLICT WITH THE NEW UTILITY INSTALLATION PRIOR TO BEGINNING CONSTRUCTION. SHOULD THE CONTRACTOR FIND ANY DISCREPANCIES BETWEEN THE CONDITIONS EXISTING IN THE FIELD AND THE INFORMATION SHOWN ON THESE DRAWINGS, THE CONTRACTOR SHALL NOTIFY THE ENGINEER BEFORE PROCEEDING WITH CONSTRUCTION. IT IS THE CONTRACTOR'S RESPONSIBILITY TO PROTECT AND MAINTAIN ALL EXISTING UTILITIES WHETHER OR NOT SHOWN ON THE PLAN.
- CONTRACTOR TO REMOVE, SALVAGE AND REPLACE OR REPLACE IN-KIND, LANDSCAPING FOR EACH PROPERTY AS IS NECESSARY TO COMPLETE CONSTRUCTION AND PROVIDE POSITIVE DRAINAGE AT NO DIRECT PAYMENT. LANDSCAPING INCLUDES, BUT IS NOT LIMITED TO, KEYSTONE WALLS, LANDSCAPE WALLS, SOD, IRRIGATION, BUSHES, ROCK MULCH, LARGE ROCK, ORNAMENTAL CONCRETE, MAILBOXES, FENCING, ETC.
- BUSHES AND TREES SHALL BE TRIMMED OR REMOVED AS NECESSARY FOR CONSTRUCTION BY AN ISA CERTIFIED ARBORIST. NO DIRECT PAYMENT FOR THIS WORK.
- COORDINATE WITH TMWA FOR WATER METER BOX REPLACEMENTS AND METER SETTER ADJUSTMENTS. CONTRACTOR TO REMOVE, SALVAGE AND REINSTALL EXISTING METER BOX UNLESS DESIGNATED FOR REPLACEMENT. TMWA WILL FURNISH THE WATER METER BOX (STANDARD OR TRAFFIC RATED) IF IT NEEDS REPLACED.
- TRAFFIC SIGNS NOT DESIGNATED FOR REPLACEMENT SHALL BE PROTECTED IN PLACE AT NO DIRECT PAYMENT.
- ALL PCC WALKWAYS TO BE 4' WIDE UNLESS OTHERWISE NOTED.
- ALL TMWA WATER METER BOXES TO BE ADJUSTED TO FINISH GRADE IN DECOMPOSED GRANITE AREAS.
- TREES WITHIN PROPOSED DECOMPOSED GRANITE SECTION SHALL BE PROTECTED IN PLACE AND A TREE WELL CONSTRUCTED WITH 2'X4' REDWOOD O.A.E. SHALL BE INSTALLED AT NO DIRECT PAYMENT.

SHEET NOTES:

- CONTRACTOR TO SALVAGE AND REINSTALL MAILBOX AND EXISTING POST AT NO DIRECT PAYMENT.
- CONTRACTOR TO REMOVE SIGN POST AND ANCHOR AT NO DIRECT PAYMENT.
- CONTRACTOR TO INSTALL CUSTOM COLORED PCC SIDEWALK.

IMPROVEMENT LEGEND

- BITUMINOUS PAVEMENT PATCH
- PCC SIDEWALK OR FLATWORK
- DECOMPOSED GRANITE
- PCC COMMERCIAL DRIVEWAY APRON AND TRANSITION
- PCC RESIDENTIAL DRIVEWAY
- LANDSCAPING
- PAVERS
- PCC TYPE 1 CURB AND GUTTER
- PCC ROLLED CURB AND GUTTER

CITY OF SPARKS
 CDBG PHASE 3
 SURFACE IMPROVEMENTS
 "12TH STREET" STA 0+00 TO 3+65
 WASHOE
 NEVADA
 SPARKS

REV	DATE	DESCRIPTION

BAR IS 1 INCH ON ORIGINAL DRAWING

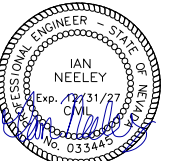
0 1'

IF NOT ONE INCH ON THIS SHEET, ADJUST SCALES ACCORDINGLY

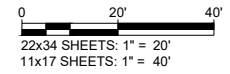
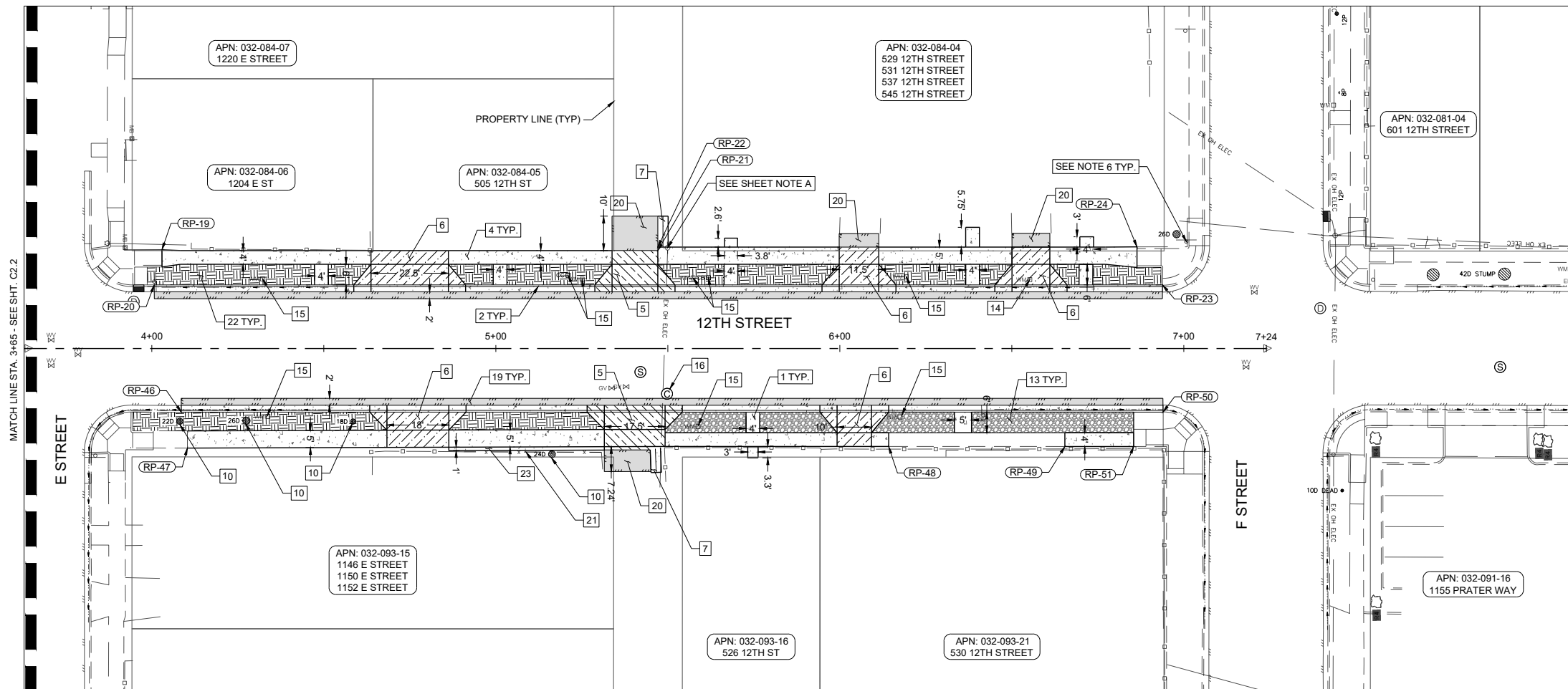
C2.2

DRAWN BY: NAC/AH
 DESIGNED BY: NAC/AH
 CHECKED BY: AJG
 JOB NO.: 10415.004

BID SET
NOT FOR CONSTRUCTION
MARCH 2026



03/19/26



SHEET C2.3 SURFACE IMPROVEMENT QUANTITIES

REFERENCE POINT (RP) TABLE

POINT #	STATION/OFFSET	DESCRIPTION
19	"12TH" 4+02.94, 28.72' LT	BEGIN SW
20	"12TH" 4+00.70, 18.50' LT	BEGIN C&G
21	"13TH" 5+48.17, 329.98' RT	END 4' SW
22	"13TH" 5+48.17, 328.98' RT	BEGIN 5' SW
23	"12TH" 6+93.80, 18.50' LT	END C&G
24	"12TH" 6+86.38, 29.57' LT	END SW
46	"12TH" 4+08.55, 18.50' RT	BEGIN C&G
47	"12TH" 4+10.34, 28.96' RT	BEGIN SW
48	"12TH" 6+14.20, 28.50' RT	END SW
49	"12TH" 6+65.42, 28.51' RT	BEGIN SW
50	"12TH" 6+93.96, 18.50' RT	END C&G
51	"12TH" 6+85.42, 28.51' RT	END SW

NO.	IMPROVEMENT TYPE	UNIT	QTY.	DETAIL	SHEET
1	REMOVE EXISTING AND CONSTRUCT PCC ENTRYWAY	SF	174	S-103	D1.0
2	REMOVE EXISTING AND CONSTRUCT PCC TYPE 1 CURB & GUTTER	LF	528	S-109 & 1 & 5	D1.0
3	REMOVE EXISTING AND CONSTRUCT PCC DRIVEWAY TRANSITION CURB/POST CURB (CONTINGENT ITEM)	LF	-	1	D1.0
4	REMOVE EXISTING AND CONSTRUCT PCC SIDEWALK	SF	1,896	S-103	D1.0
5	REMOVE EXISTING AND CONSTRUCT PCC COMMERCIAL DRIVEWAY	SF	481	S111-A & 1 & 3 & 4	D1.1
6	REMOVE EXISTING AND CONSTRUCT PCC RESIDENTIAL DRIVEWAY	SF	903	S111-A & 1 & 2	D1.1
7	REMOVE EXISTING AND CONSTRUCT REINFORCED PCC VALLEY GUTTER	SF	49	S-108	D1.0
8	REMOVE, SALVAGE, AND REINSTALL PAVER DRIVEWAY/WALKWAY	SF	-	-	-
9	FURNISH AND INSTALL NEW POST AND ANCHOR, SALVAGE AND REINSTALL ALL EXISTING SIGN PANELS	EA	-	-	-
10	REMOVE AND DISPOSE OF TREE	EA	4	-	-
11	GRIND AND DISPOSE OF EXISTING TREE STUMP	EA	-	-	-
12	PERFORM ROOT MITIGATION BY AN ISA CERTIFIED ARBORIST (CONTINGENT ITEM)	EA	-	4	D1.0
13	REMOVE EXISTING AND PLACE DECOMPOSED GRANITE	SF	661	2	D1.2
14	REMOVE EXISTING AND INSTALL AND ADJUST NEW STANDARD OR TRAFFIC RATED SINGLE WATER METER BOX (TMWA FURNISHED) TO NEW FINISH GRADE (CONTINGENT ITEM)	EA	1	S-407G & S-407H	D1.3
15	PROTECT AND ADJUST STANDARD SINGLE WATER METER BOXES TO NEW FINISH GRADE (CONTINGENT ITEM)	EA	9	S-407G & S-407H	D1.3
16	PROTECT AND ADJUST MANHOLE STRUCTURE (NEW OR EXISTING) TO FINISH GRADE WITH NEW PCC COLLAR, AND PROVIDE NEW 24" FRAME & COVER	EA	1	S-407G & S-407H	D1.3
17	PROTECT AND ADJUST UTILITY VALVE TO FINISH GRADE	EA	-	2	D1.3
18	PAINT CURB	LF	-	-	-
19	REMOVE EXISTING AND PLACE 2-FOOT WIDE 4-INCH PLANTMIX BITUMINOUS PATCH	SF	1,157	S-115	D1.2
20	REMOVE EXISTING AND PLACE 3-INCH PLANTMIX BITUMINOUS DRIVEWAY TRANSITION	SF	307	1	D1.2
21	REMOVE AND REPLACE 3', 4', OR 6' HIGH FENCING AND GATES (CHAIN-LINK, WOOD, WROUGHT IRON), (CONTINGENT ITEM)	LF	65	3 & 4 & 5	D1.2
22	LANDSCAPE RESTORATION	SF	1,752	2 & 3	D1.0
23	REMOVE EXISTING AND CONSTRUCT PCC MOW STRIP	LF	40	5	D1.1

GENERAL NOTES:

- CONTRACTOR TO PROTECT EXISTING CONCRETE FLATWORK AND CURB & GUTTER UNLESS DESIGNATED FOR REMOVAL AND REPLACEMENT. CONTRACTOR TO REPLACE FULL SIDEWALK PANEL WIDTH AS INDICATED IN PLANS.
- THE LOCATION OF EXISTING UTILITIES SHOWN ON THESE PLANS ARE BASED ON THE BEST INFORMATION AVAILABLE TO THE ENGINEER. IT SHALL BE THE CONTRACTOR'S RESPONSIBILITY TO VERIFY PROPOSED POINTS OF CONNECTION AND IN AREAS OF POSSIBLE CONFLICT WITH THE NEW UTILITY INSTALLATION PRIOR TO BEGINNING CONSTRUCTION. SHOULD THE CONTRACTOR FIND ANY DISCREPANCIES BETWEEN THE CONDITIONS EXISTING IN THE FIELD AND THE INFORMATION SHOWN ON THESE DRAWINGS, THE CONTRACTOR SHALL NOTIFY THE ENGINEER BEFORE PROCEEDING WITH CONSTRUCTION. IT IS THE CONTRACTOR'S RESPONSIBILITY TO PROTECT AND MAINTAIN ALL EXISTING UTILITIES WHETHER OR NOT SHOWN ON THE PLAN.
- CONTRACTOR TO REMOVE, SALVAGE AND REPLACE OR REPLACE IN-KIND, LANDSCAPING FOR EACH PROPERTY AS IS NECESSARY TO COMPLETE CONSTRUCTION AND PROVIDE POSITIVE DRAINAGE AT NO DIRECT PAYMENT. LANDSCAPING INCLUDES, BUT IS NOT LIMITED TO, KEYSTONE WALLS, LANDSCAPE WALLS, SOD, IRRIGATION, BUSHES, ROCK MULCH, LARGE ROCK, ORNAMENTAL CONCRETE, MAILBOXES, FENCING, ETC.
- BUSHES AND TREES SHALL BE TRIMMED OR REMOVED AS NECESSARY FOR CONSTRUCTION BY AN ISA CERTIFIED ARBORIST. NO DIRECT PAYMENT FOR THIS WORK.
- COORDINATE WITH TMWA FOR WATER METER BOX REPLACEMENTS AND METER SETTER ADJUSTMENTS. CONTRACTOR TO REMOVE, SALVAGE AND REINSTALL EXISTING METER BOX UNLESS DESIGNATED FOR REPLACEMENT. TMWA WILL FURNISH THE WATER METER BOX (STANDARD OR TRAFFIC RATED) IF IT NEEDS REPLACED.
- TRAFFIC SIGNS NOT DESIGNATED FOR REPLACEMENT SHALL BE PROTECTED IN PLACE AT NO DIRECT PAYMENT.
- ALL PCC WALKWAYS TO BE 4' WIDE UNLESS OTHERWISE NOTED.
- ALL TMWA WATER METER BOXES TO BE ADJUSTED TO FINISH GRADE IN DECOMPOSED GRANITE AREAS.
- TREES WITHIN PROPOSED DECOMPOSED GRANITE SECTION SHALL BE PROTECTED IN PLACE AND A TREE WELL CONSTRUCTED WITH 2'X4' REDWOOD O.A.E. SHALL BE INSTALLED AT NO DIRECT PAYMENT.

SHEET NOTES:

- CONTRACTOR TO PROTECT EXISTING POWER POLE IN PLACE AT NO DIRECT PAYMENT.

IMPROVEMENT LEGEND

- BITUMINOUS PAVEMENT PATCH
- PCC SIDEWALK OR FLATWORK
- DECOMPOSED GRANITE
- PCC COMMERCIAL DRIVEWAY APRON AND TRANSITION
- PCC RESIDENTIAL DRIVEWAY
- LANDSCAPING
- PAVERS
- PCC TYPE 1 CURB AND GUTTER
- PCC ROLLED CURB AND GUTTER

CITY OF SPARKS
 CDBG PHASE 3
 SURFACE IMPROVEMENTS
 "12TH STREET" STA 3+65 TO 7+24
 WASHOE
 NEVADA
 SPARKS

REV	DATE	DESCRIPTION

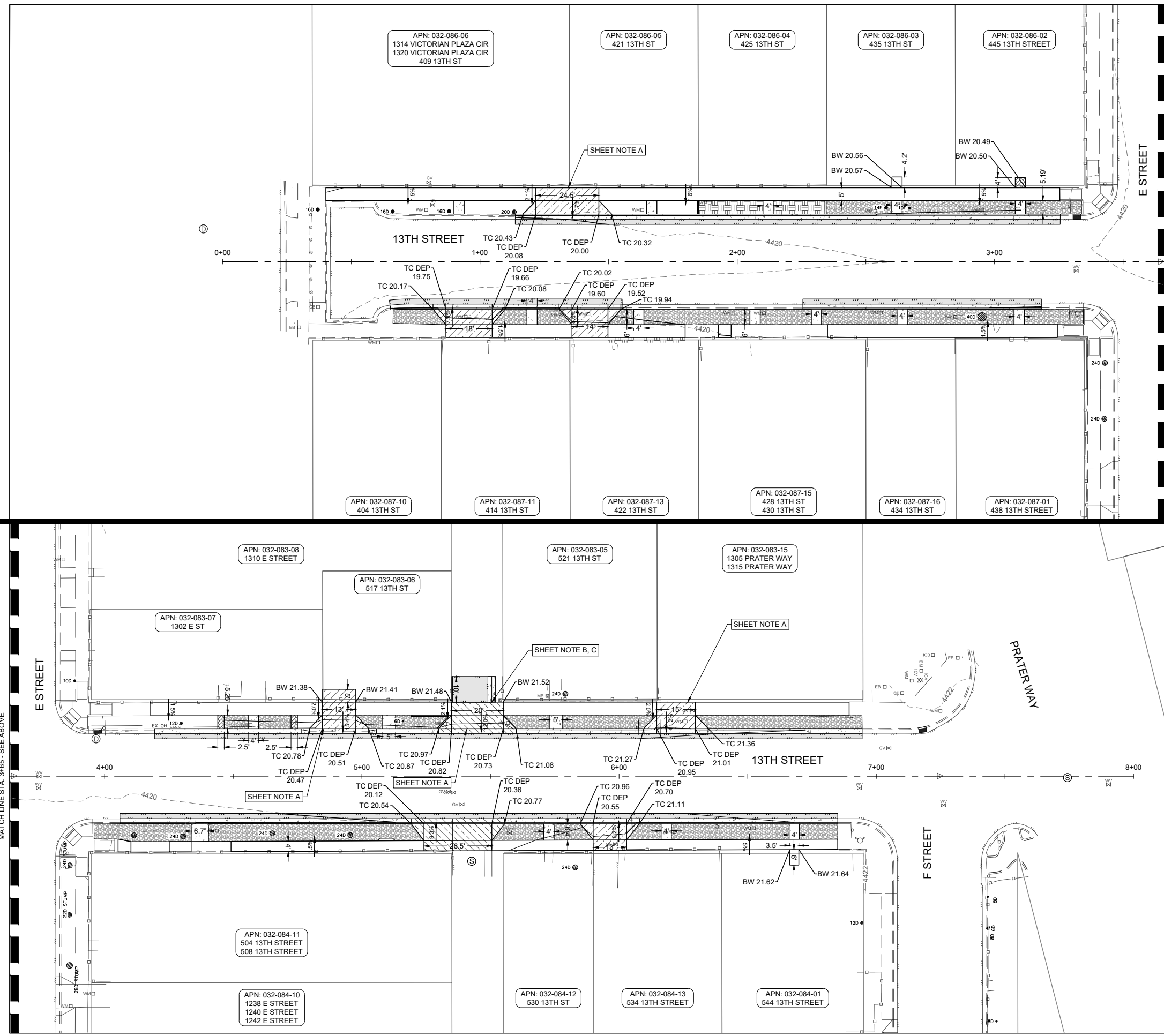
BAR IS 1 INCH ON ORIGINAL DRAWING

IF NOT ONE INCH ON THIS SHEET, ADJUST SCALES ACCORDINGLY

C2.3

DRAWN BY: NAC/AH
 DESIGNED BY: NAC/AH
 CHECKED BY: AJG
 JOB NO.: 10415.004

L:\AP\10415.004 - C3.0 CDBG Phase 3 Design\DWG\Civil\Sheets\10415004 - Grading Sheets.dwg,C3.0 "13TH STREET" STA 0+00 TO 8+00.
03/19/2026 11:22 am ohenrickson



- GENERAL GRADING NOTES:**
- 4400' TO BE ADDED TO ALL PLAN VIEW ELEVATION TAGS.
 - THE GRADING INTENT FOR THIS PROJECT IS TO MATCH EXISTING GRADES AT BACK OF WALK AND EDGE OF PAVEMENT, OR WHERE INDICATED ON THE PLAN SHEETS.
 - REFER TO THE SURFACE IMPROVEMENT PLANS FOR ITEMS TO PROTECT IN PLACE WHILE PERFORMING GRADING OPERATIONS.
 - CITY TO PROVIDE CONSTRUCTION STAKING.
 - PROTECT ALL EXISTING UTILITIES IN PLACE UNLESS DESIGNATED FOR REPLACEMENT.
 - AT CURB AND GUTTER MATCH POINTS, CONTRACTOR TO INSTALL 3" TRANSITION SEGMENT TO WARP SECTION INTO EXISTING CONFIGURATION
 - ALL RELIEF PATCHES ARE 4' FROM EDGE OF PAVEMENT.

- SHEET NOTES:**
- 2" BEVELED LIP ON THESE DRIVEWAYS ONLY.
 - CONTRACTOR TO MAINTAIN POSITIVE DRAINAGE FROM VALLEY GUTTER TO GUTTERPAN.
 - CONTRACTOR TO PROTECT POLE IN PLACE.



950 SANDHILL ROAD, SUITE 100
RENO, NV 89521
TEL: 775.827.6111
WWW.LUMOSINC.COM
INFO@LUMOSINC.COM

© LUMOS & ASSOCIATES, INC. THIS DRAWING IS THE PROPERTY OF LUMOS & ASSOCIATES, INC. USE OR REPRODUCTION OF THIS DRAWING, IN WHOLE OR IN PART, WITHOUT THE WRITTEN PERMISSION OF LUMOS & ASSOCIATES, INC. IS STRICTLY PROHIBITED. THIS DRAWING IS NOT TO BE USED FOR ANY PROJECT OTHER THAN THE PROJECT FOR WHICH IT WAS PREPARED.



0 20' 40'
22x34 SHEETS: 1" = 20'
11x17 SHEETS: 1" = 40'

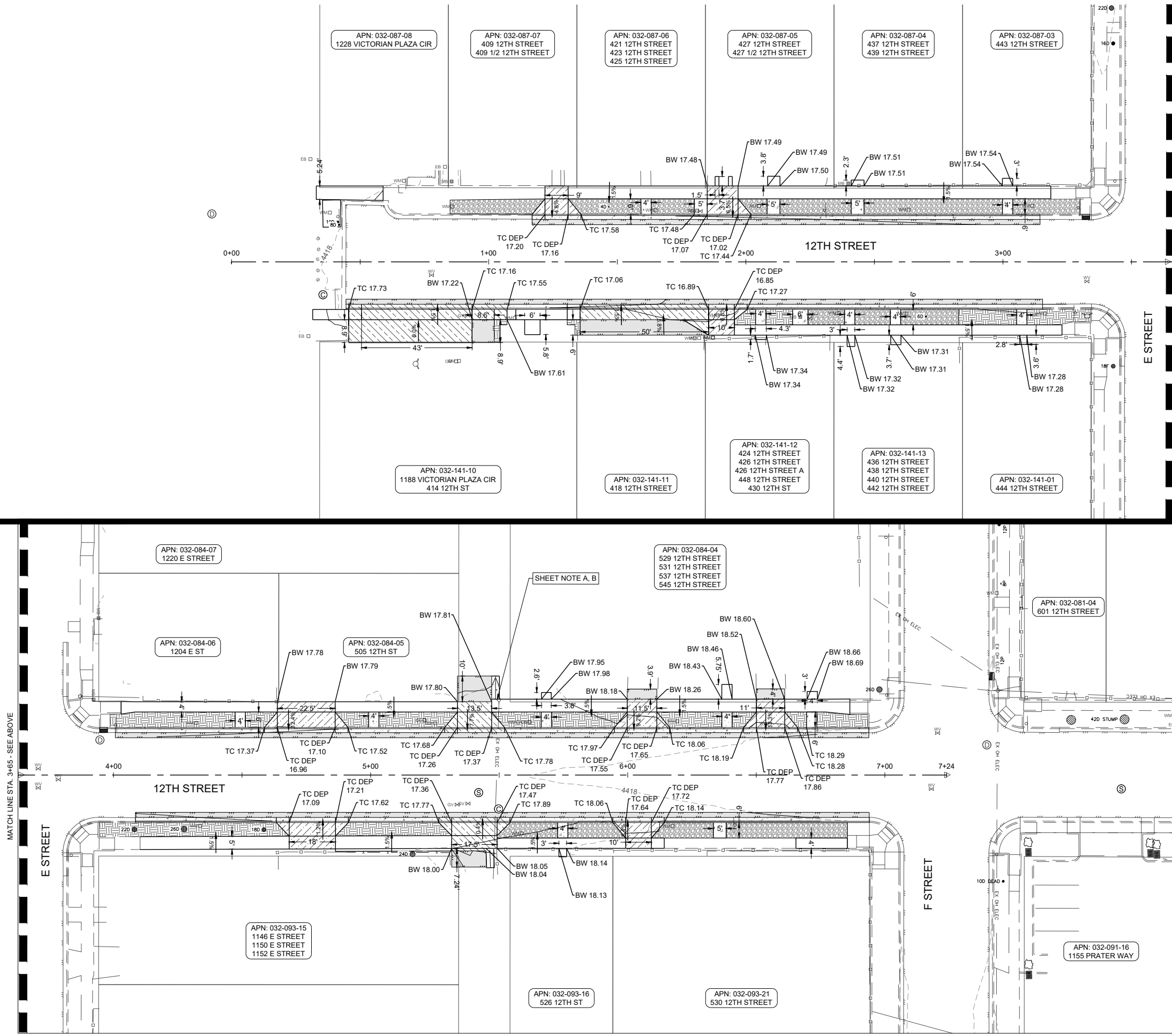
CITY OF SPARKS
CDBG PHASE 3
GRADING PLANS
"13TH STREET" STA 0+00 TO 8+00
SPARKS
WASHOE
NEVADA

REV	DATE	DESCRIPTION	BY

BAR IS 1 INCH ON ORIGINAL DRAWING
IF NOT ONE INCH ON THIS SHEET, ADJUST SCALES ACCORDINGLY
C3.0
DRAWN BY: NAC/AH
DESIGNED BY: NAC/AH
CHECKED BY: AJG
JOB NO.: 10415.004

BID SET
NOT FOR CONSTRUCTION
MARCH 2026

L:\AP\10415.004 - C05 CDBG Phase 3 Design\DWG\Civil\Sheets\10415004 - Grading Sheets.dwg,03.1 "12TH STREET" STA 0+00 TO 8+00.
03/19/2026 11:22 am ohenrickson



MATCH LINE STA. 3+65 - SEE BELOW

- GENERAL GRADING NOTES:**
- 4400' TO BE ADDED TO ALL PLAN VIEW ELEVATION TAGS.
 - THE GRADING INTENT FOR THIS PROJECT IS TO MATCH EXISTING GRADES AT BACK OF WALK AND EDGE OF PAVEMENT, OR WHERE INDICATED ON THE PLAN SHEETS.
 - REFER TO THE SURFACE IMPROVEMENT PLANS FOR ITEMS TO PROTECT IN PLACE WHILE PERFORMING GRADING OPERATIONS.
 - CITY TO PROVIDE CONSTRUCTION STAKING.
 - PROTECT ALL EXISTING UTILITIES IN PLACE UNLESS DESIGNATED FOR REPLACEMENT.
 - AT CURB AND GUTTER MATCH POINTS, CONTRACTOR TO INSTALL 3' TRANSITION SEGMENT TO WARP SECTION INTO EXISTING CONFIGURATION
 - ALL RELIEF PATCHES ARE 4' FROM EDGE OF PAVEMENT.

- SHEET NOTES:**
- CONTRACTOR TO MAINTAIN POSITIVE DRAINAGE FROM VALLEY GUTTER TO GUTTERPAN.
 - CONTRACTOR TO PROTECT POLE IN PLACE.



950 SANDHILL ROAD, SUITE 100
RENO, NV 89521
TEL: 775.827.6111
WWW.LUMOSINC.COM
INFO@LUMOSINC.COM

© LUMOS & ASSOCIATES, INC. THIS DRAWING IS THE PROPERTY OF LUMOS & ASSOCIATES, INC. USE OR REPRODUCTION OF THIS DRAWING, IN WHOLE OR IN PART, WITHOUT THE WRITTEN PERMISSION OF LUMOS & ASSOCIATES, INC. IS STRICTLY PROHIBITED. THIS DRAWING IS NOT TO BE USED FOR ANY PROJECT OTHER THAN THE PROJECT FOR WHICH IT WAS PREPARED.



03/19/26



0 20' 40'
22x34 SHEETS: 1" = 20'
11x17 SHEETS: 1" = 40'

CITY OF SPARKS
CDBG PHASE 3
GRADING PLANS
"12TH STREET" STA 0+00 TO 8+00
SPARKS
WASHOE
NEVADA

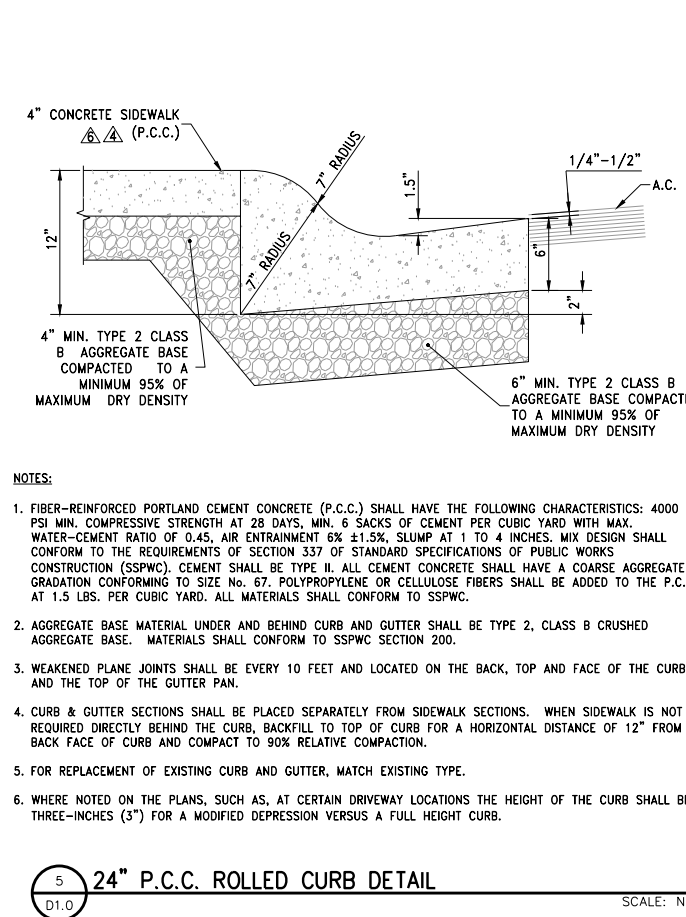
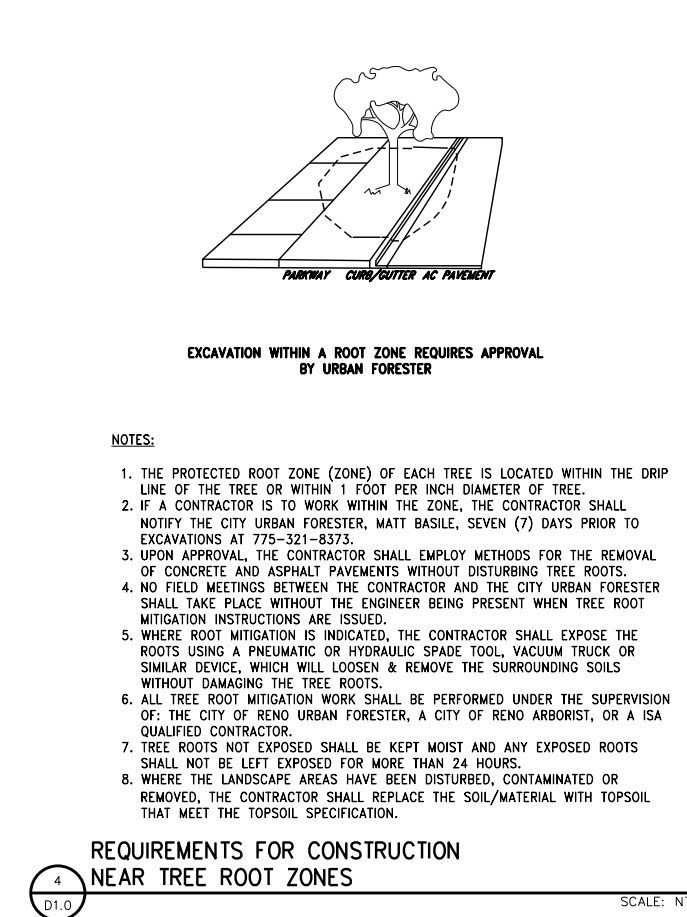
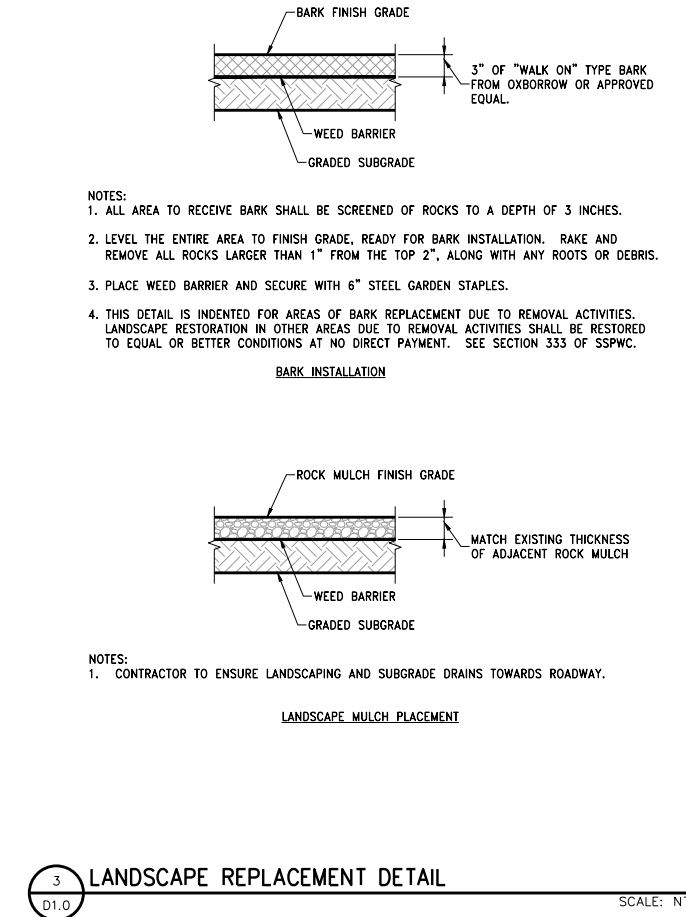
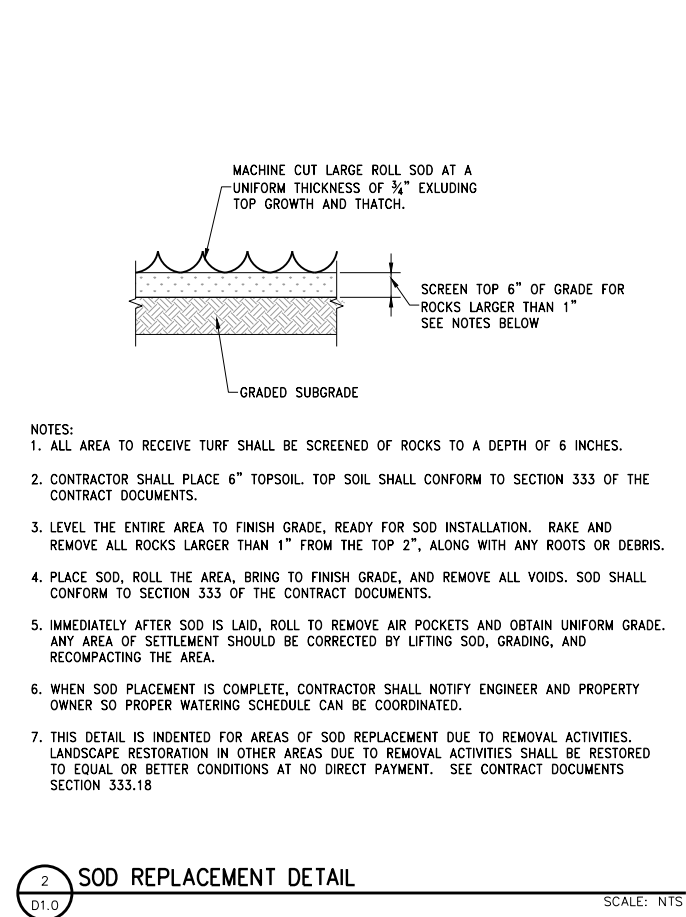
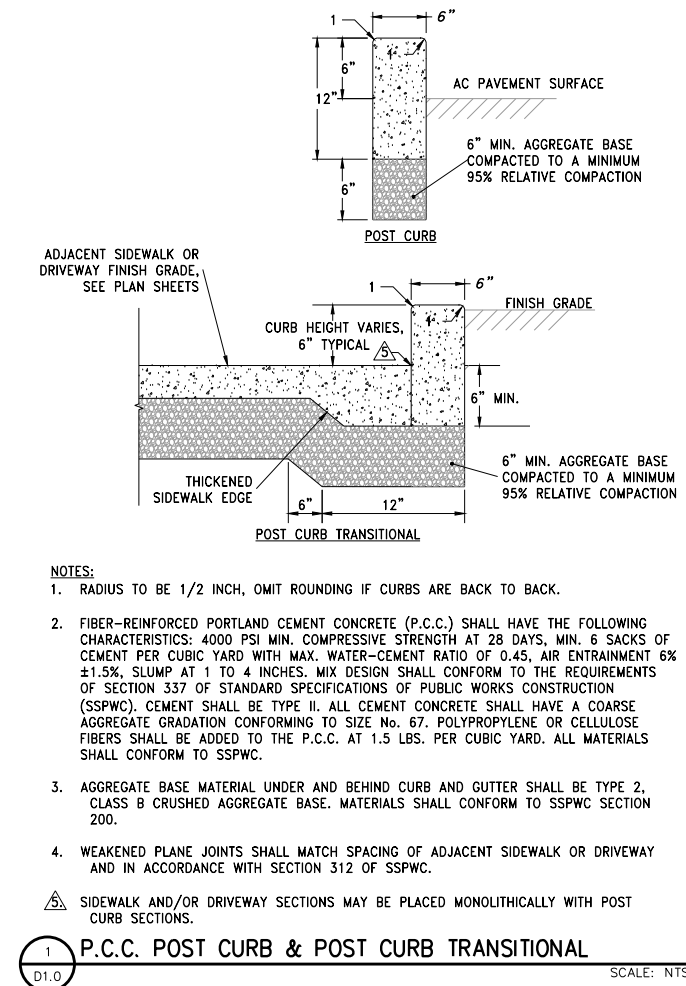
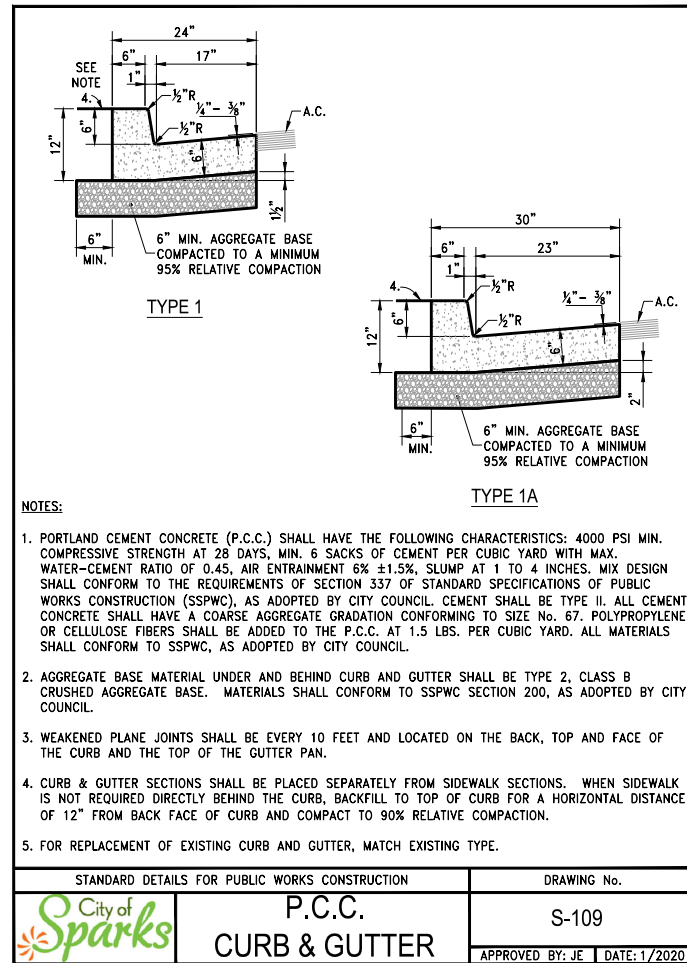
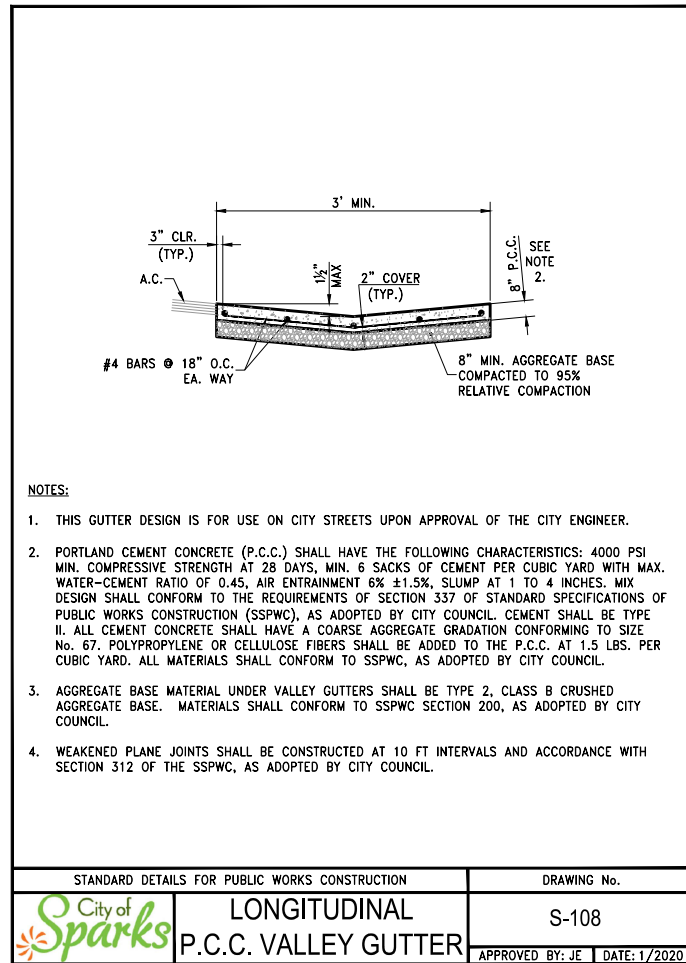
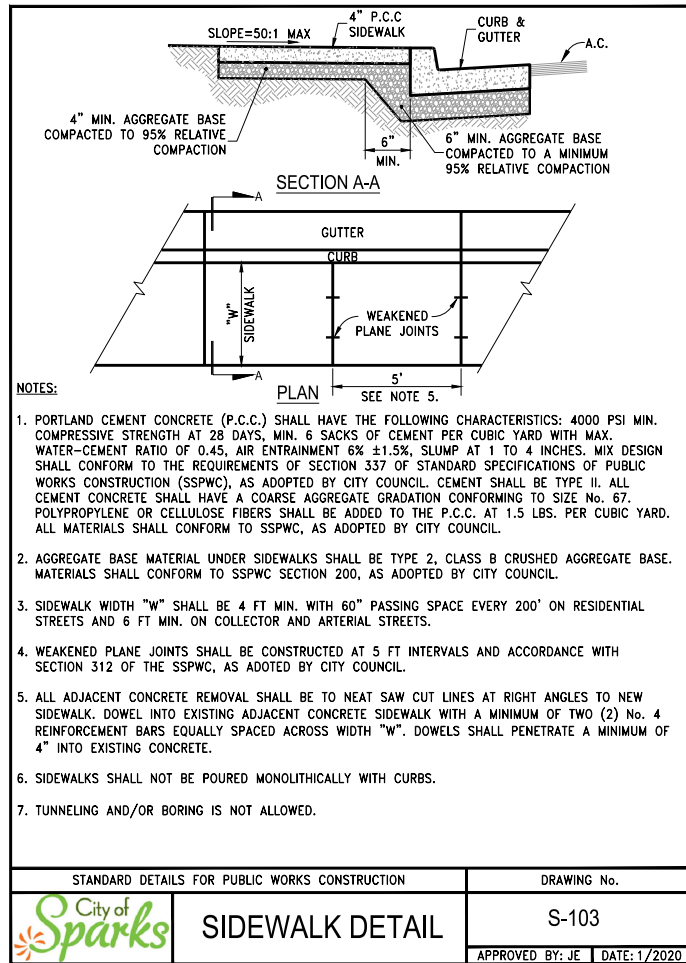
REV	DATE	DESCRIPTION	BY

BID SET
NOT FOR CONSTRUCTION
MARCH 2026

BAR IS 1 INCH ON ORIGINAL DRAWING
0 1'
IF NOT ONE INCH ON THIS SHEET,
ADJUST SCALES ACCORDINGLY

C3.1

DRAWN BY: NAC/AH
DESIGNED BY: NAC/AH
CHECKED BY: AJG
JOB NO.: 10415.004



LUMOS & ASSOCIATES
 950 SANDHILL ROAD, SUITE 100
 RENO, NV 89521
 TEL: 775.827.6111
 WWW.LUMOSINC.COM
 INFO@LUMOSINC.COM

© LUMOS & ASSOCIATES, INC. THIS DRAWING IS THE PROPERTY OF LUMOS & ASSOCIATES, INC. USE OR REPRODUCTION OF THIS DRAWING, IN WHOLE OR IN PART, WITHOUT THE WRITTEN PERMISSION OF LUMOS & ASSOCIATES, INC. IS STRICTLY PROHIBITED. THIS DRAWING IS NOT TO BE USED FOR ANY PROJECT OTHER THAN THE PROJECT FOR WHICH IT WAS PREPARED.

REGISTERED PROFESSIONAL ENGINEER - STATE OF NEVADA
 IAN NEELEY
 Exp. 12/31/27
 CIVIL
 No. 033445
 03/19/26

REGIONAL TRANSPORTATION COMMISSION
 CDBG PHASE 3
 DETAILS
 WASHOE
 SPARKS
 NEVADA

NOT FOR CONSTRUCTION
 MARCH 2026

REV.	DATE	DESCRIPTION

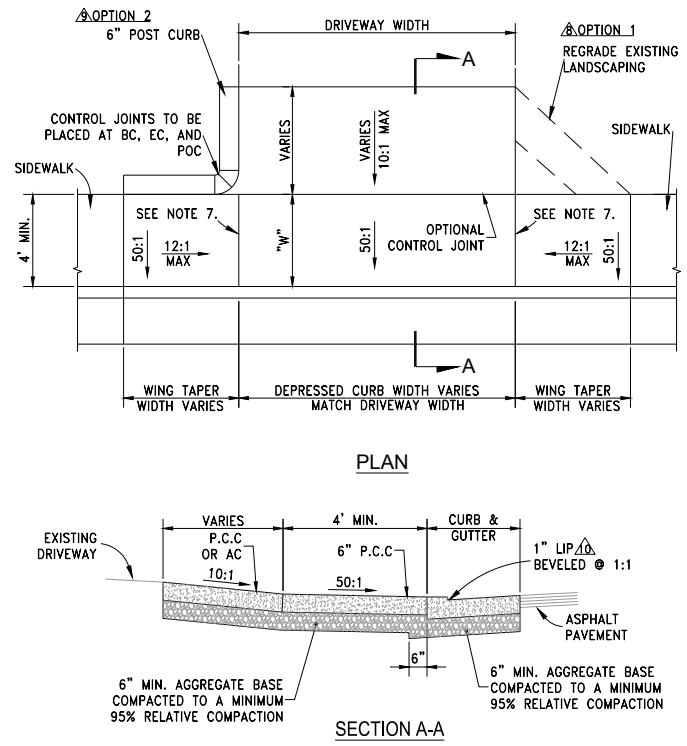
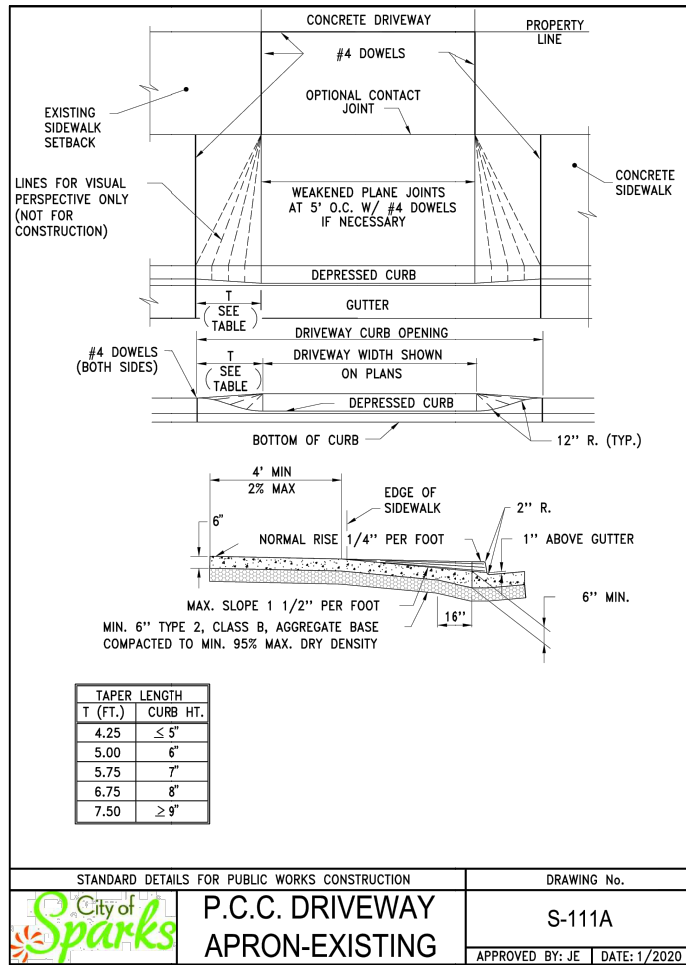
BAR IS 1 INCH ON ORIGINAL DRAWING

0 1"
 IF NOT ONE INCH ON THIS SHEET, ADJUST SCALES ACCORDINGLY.

D1.0

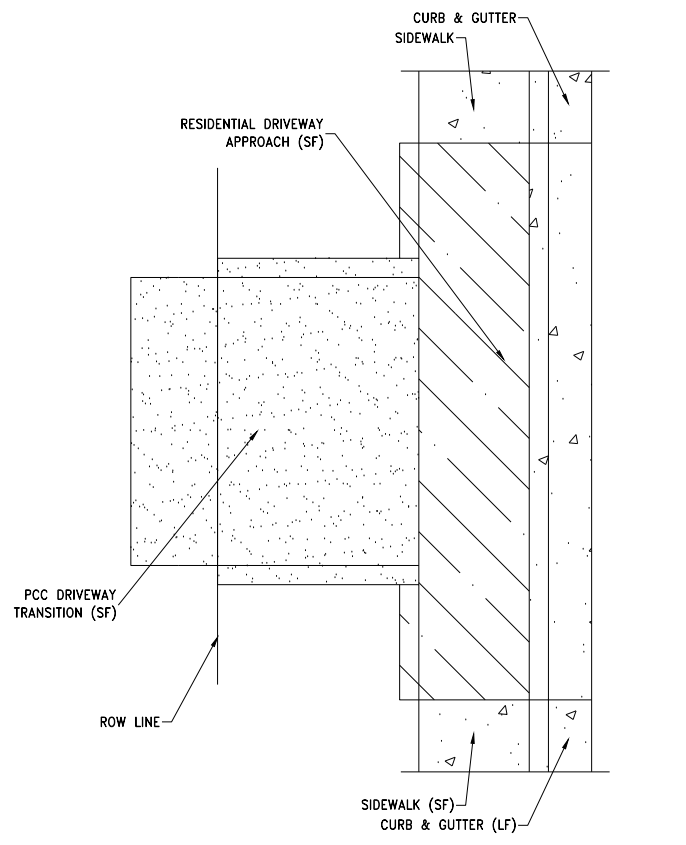
DRAWN BY: NAC/AAH
 DESIGNED BY: NAC/AAH
 CHECKED BY: IPN
 JOB NO.: 10415.004

L:\A\Proj\10415.004 - C05 CDBG Phase 3 Design\DWG\Civil\Sheets\10415004 - Details.dwg; D1.0 DETAILS, 03/19/2026 11:22 am ohenrichsen

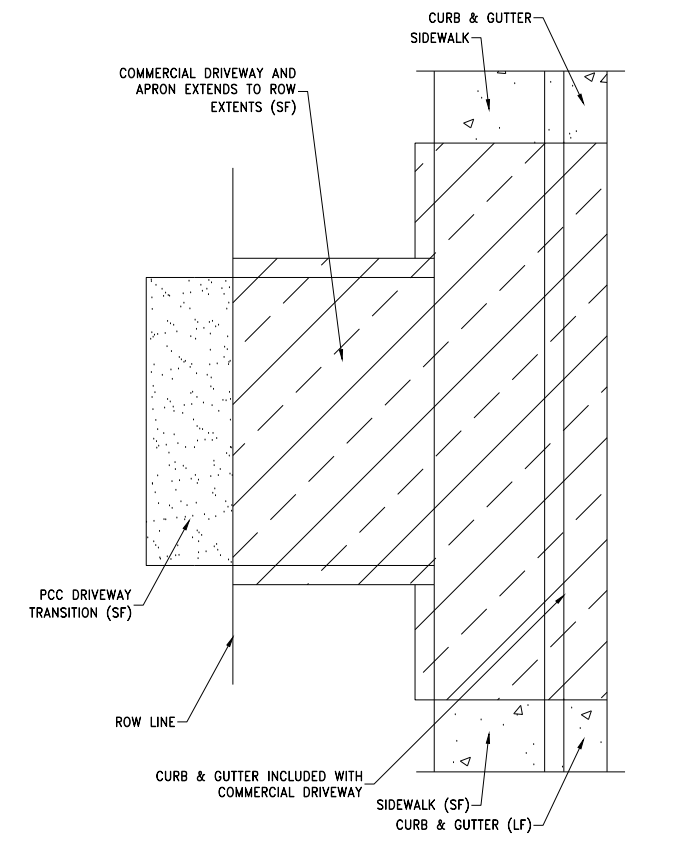


1 ADA P.C.C. DRIVEWAY – APRON EXISTING SCALE: NTS

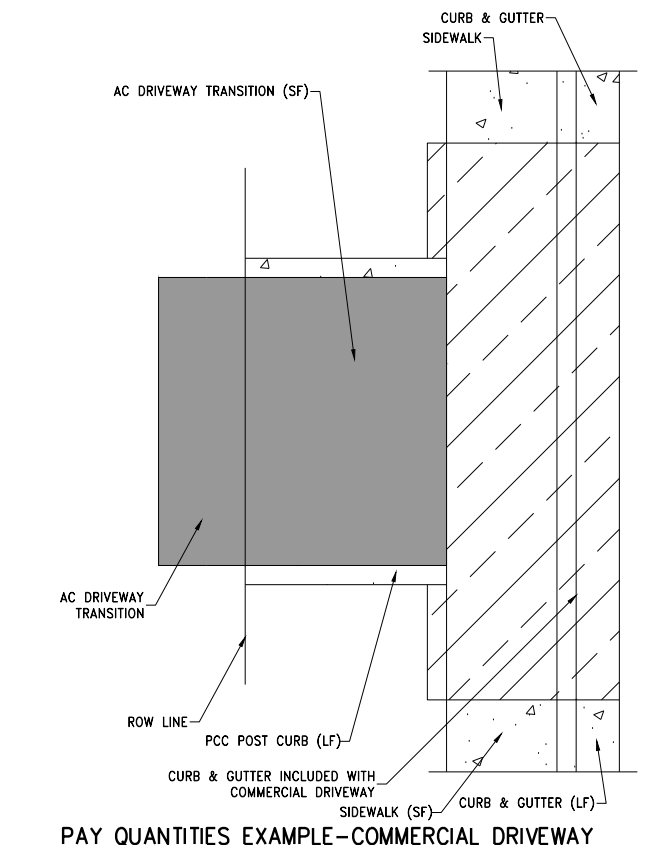
- NOTES:**
- PORTLAND CEMENT CONCRETE (P.C.C.) SHALL HAVE THE FOLLOWING CHARACTERISTICS: 4000 PSI MIN. COMPRESSIVE STRENGTH AT 28 DAYS, MIN. 6 SACKS OF CEMENT PER CUBIC YARD WITH MAX. WATER-CEMENT RATIO OF 0.45, AIR ENTRAINMENT 6% ±1.5%, SLUMP AT 1 TO 4 INCHES. MIX DESIGN SHALL CONFORM TO THE REQUIREMENTS OF SECTION 337 OF STANDARD SPECIFICATIONS OF PUBLIC WORKS CONSTRUCTION (SSPWC), AS ADOPTED BY CITY COUNCIL. CEMENT SHALL BE TYPE II. ALL CEMENT CONCRETE SHALL HAVE A COARSE AGGREGATE GRADATION CONFORMING TO SIZE No. 67. POLYPROPYLENE OR CELLULOSE FIBERS SHALL BE ADDED TO THE P.C.C. AT 1.5 LBS. PER CUBIC YARD. ALL MATERIALS SHALL CONFORM TO SSPWC, AS ADOPTED BY CITY COUNCIL.
 - AGGREGATE BASE MATERIAL UNDER DRIVEWAYS AND SIDEWALKS SHALL BE TYPE 2, CLASS B CRUSHED AGGREGATE BASE. ALL MATERIALS SHALL CONFORM TO SSPWC SECTION 200, AS ADOPTED BY CITY COUNCIL.
 - RESIDENTIAL DRIVEWAYS SHALL BE POURED SEPARATE FROM CURB AND GUTTER.
 - COMMERCIAL DRIVEWAYS MAY BE POURED MONOLITHIC WITH CURB AND GUTTER. COMMERCIAL DRIVEWAYS TO HAVE #4 BARS AT 18" ON CENTER LONGITUDINAL & TRANSVERSE EXTENDING INTO GUTTER PAN AND DRIVEWAY WINGS. MINIMUM 2" CONCRETE COVER FOR ALL REINFORCING BARS. WHEN COMMERCIAL DRIVEWAY APPROACH AND CURB & GUTTER IS POURED SEPARATELY, IT SHALL BE REQUIRED FOR EACH REINFORCING BAR TO BE DOWELED INTO ADJACENT CURB & GUTTER. DOWELS SHALL #4 REBAR, PENETRATE INTO CURB & GUTTER MINIMUM OF 6", SPACED AT 18" ON CENTER AND BE SECURELY TIED TO THE DRIVEWAY APPROACH REINFORCING.
 - IF JOINT EXISTS WITHIN 4 FEET OF DRIVEWAY, REMOVE SIDEWALK AND CURB AND GUTTER TO THAT JOINT.
 - ALL ADJACENT CONCRETE REMOVAL SHALL BE TO NEAT SAW CUT LINES AT RIGHT ANGLES. DOWEL INTO EXISTING ADJACENT DRIVEWAY APPROACH OR SIDEWALK WITH (2) No. 4 REINFORCEMENT BARS EQUALLY SPACED ACROSS WIDTH "W". DOWELS SHALL PENETRATE A MINIMUM OF 4" INTO EXISTING CONCRETE.
 - WEAKENED PLANE JOINTS SHALL BE CONSTRUCTED AT 5 FT INTERVALS AND IN ACCORDANCE WITH SECTION 312 OF THE SSPWC, AS ADOPTED BY CITY COUNCIL.
 - OPTION 1 IS PREFERRED. REGRADE EXISTING LANDSCAPING INCLUDING ADJUSTMENT OF SPRINKLER HEADS, IRRIGATION LINES, ROCK, SOD, ETC.
 - OPTION 2 WILL REQUIRE CITY OF SPARKS APPROVAL PRIOR TO PLACEMENT. THIS OPTION MAY BE NECESSARY TO PROTECT EXISTING FENCING, WALLS, OR FEATURES THAT CANNOT BE REGRADED.
 - A 2" LIP MAY BE NECESSARY AT SELECT LOCATIONS, REFERENCE PLAN SHEETS.



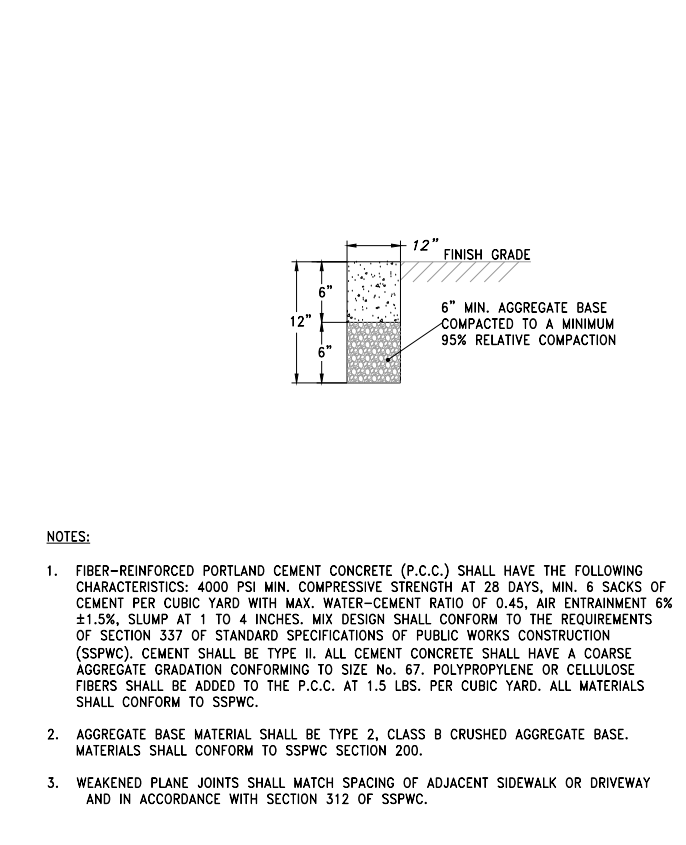
2 PAY QUANTITIES EXAMPLE-RESIDENTIAL DRIVEWAY SCALE: NTS



3 PAY QUANTITIES EXAMPLE-COMMERCIAL DRIVEWAY SCALE: NTS

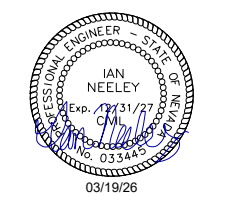


4 PAY QUANTITIES EXAMPLE-COMMERCIAL DRIVEWAY W/ AC TRANSITION SCALE: NTS



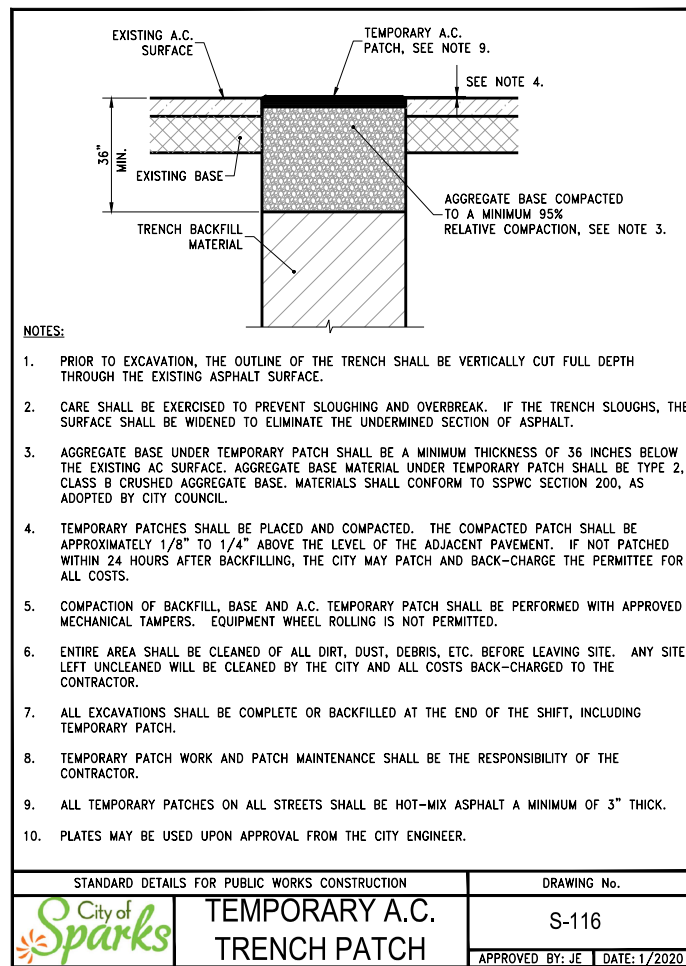
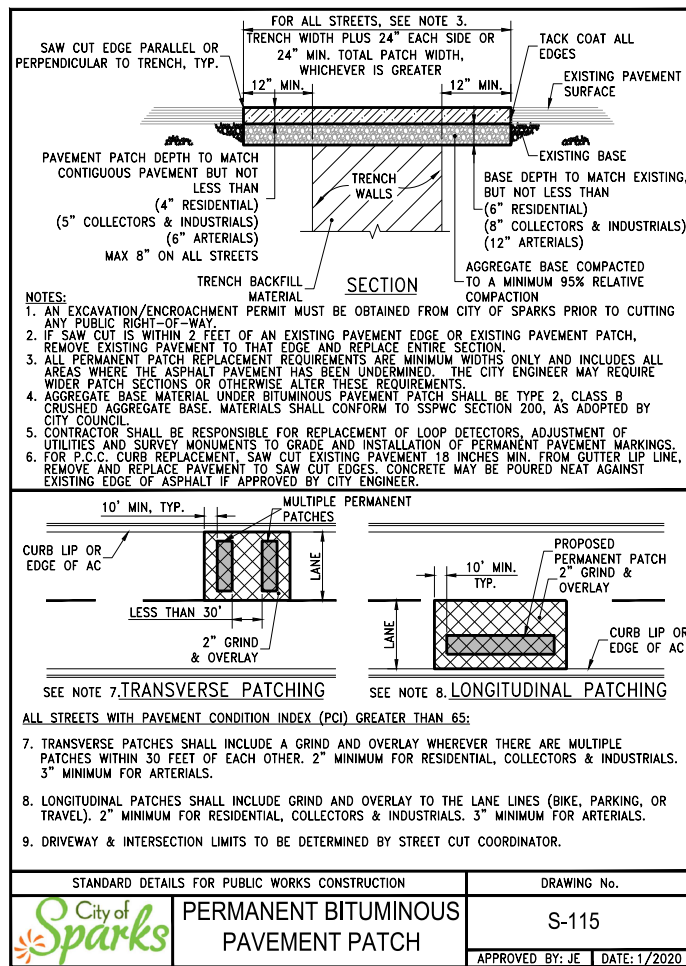
5 PCC MOW STRIP SCALE: NTS

- NOTES:**
- FIBER-REINFORCED PORTLAND CEMENT CONCRETE (P.C.C.) SHALL HAVE THE FOLLOWING CHARACTERISTICS: 4000 PSI MIN. COMPRESSIVE STRENGTH AT 28 DAYS, MIN. 6 SACKS OF CEMENT PER CUBIC YARD WITH MAX. WATER-CEMENT RATIO OF 0.45, AIR ENTRAINMENT 6% ±1.5%, SLUMP AT 1 TO 4 INCHES. MIX DESIGN SHALL CONFORM TO THE REQUIREMENTS OF SECTION 337 OF STANDARD SPECIFICATIONS OF PUBLIC WORKS CONSTRUCTION (SSPWC). CEMENT SHALL BE TYPE II. ALL CEMENT CONCRETE SHALL HAVE A COARSE AGGREGATE GRADATION CONFORMING TO SIZE No. 67. POLYPROPYLENE OR CELLULOSE FIBERS SHALL BE ADDED TO THE P.C.C. AT 1.5 LBS. PER CUBIC YARD. ALL MATERIALS SHALL CONFORM TO SSPWC.
 - AGGREGATE BASE MATERIAL SHALL BE TYPE 2, CLASS B CRUSHED AGGREGATE BASE. MATERIALS SHALL CONFORM TO SSPWC SECTION 200.
 - WEAKENED PLANE JOINTS SHALL MATCH SPACING OF ADJACENT SIDEWALK OR DRIVEWAY AND IN ACCORDANCE WITH SECTION 312 OF SSPWC.



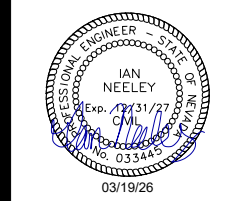
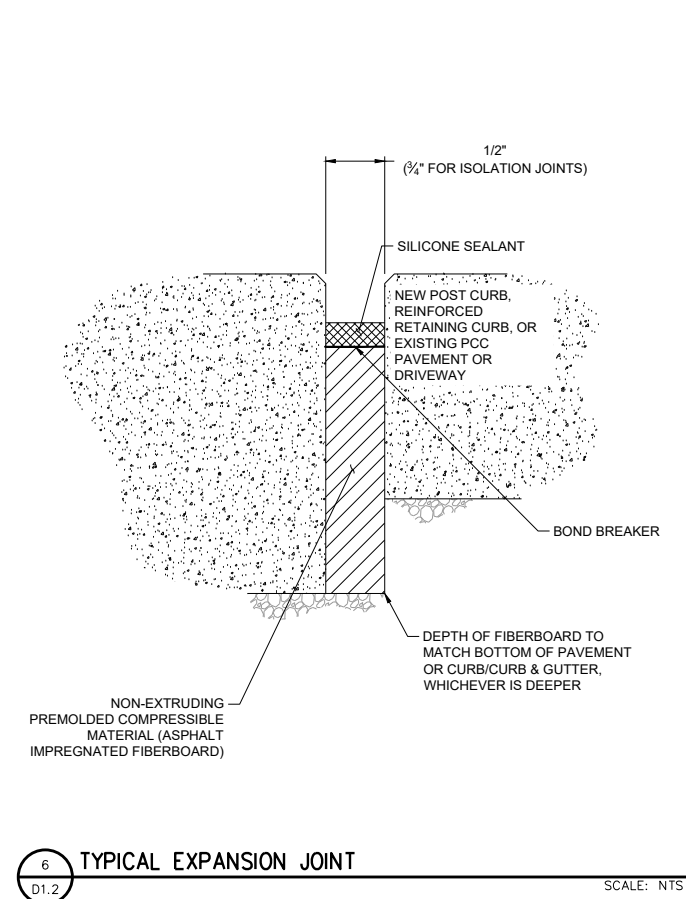
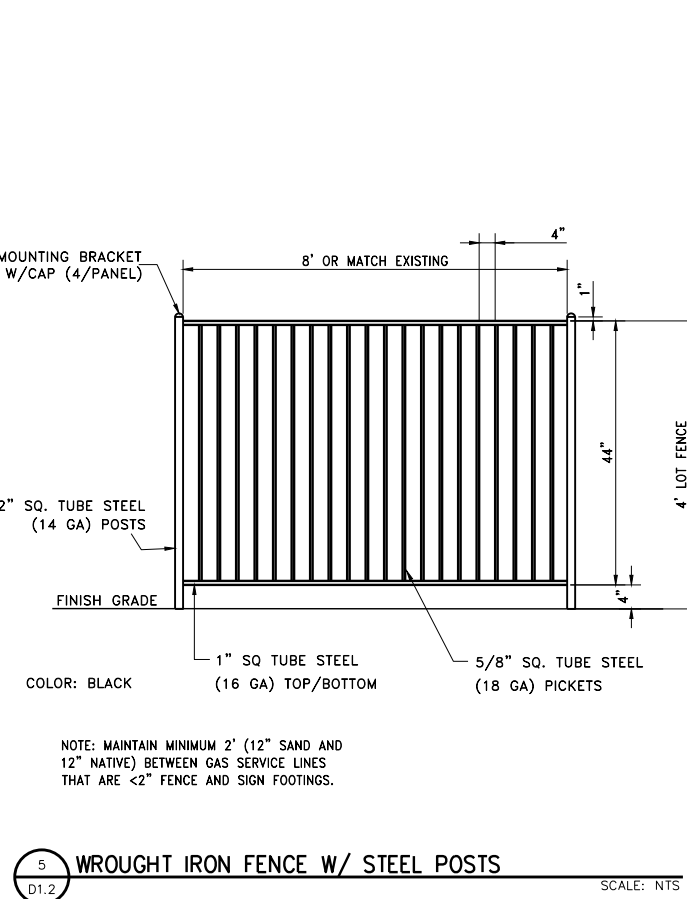
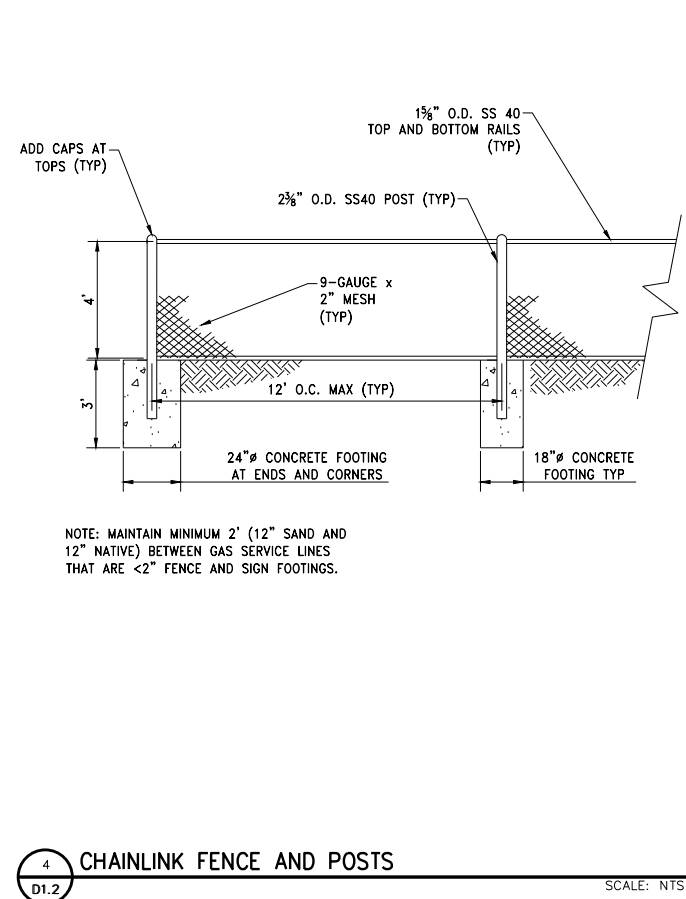
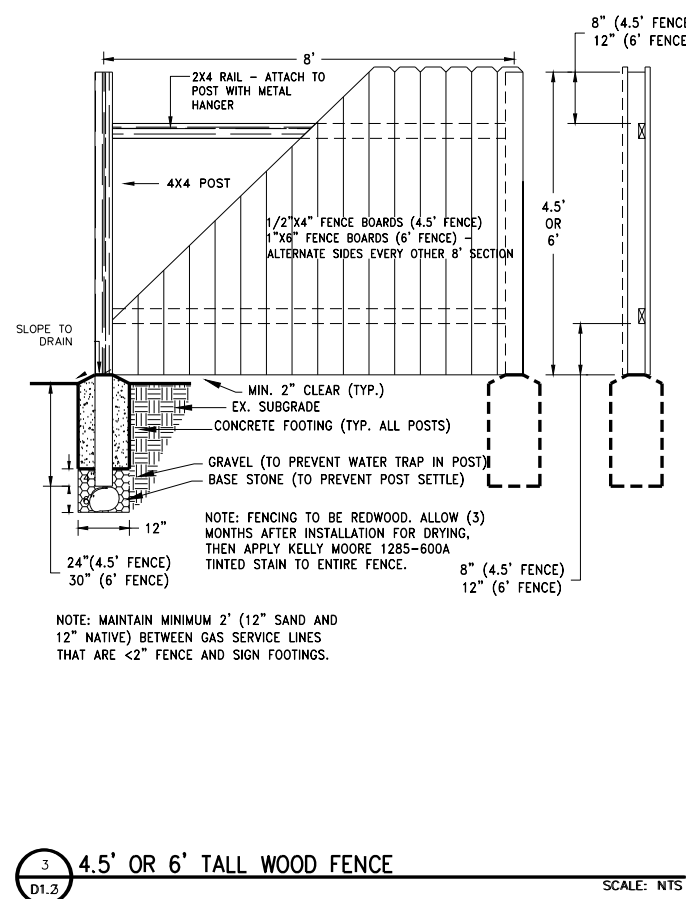
REV	DATE	DESCRIPTION

L:\APro\10415.004 - C05 CDBG Phase 3 Design\3-Design\DWG\Civil\Sheets\10415004 - Details.dwg D1.1 DETAILS 03/19/2026 11:22 am ahernickson



1 PERMANENT BITUMINOUS PAVEMENT PATCH BEHIND DRIVEWAY AND/OR SIDEWALK SCALE: NTS

2 DECOMPOSED GRANITE INSTALLATION SCALE: NTS



BY: _____
DESCRIPTION: _____
REV. DATE: _____

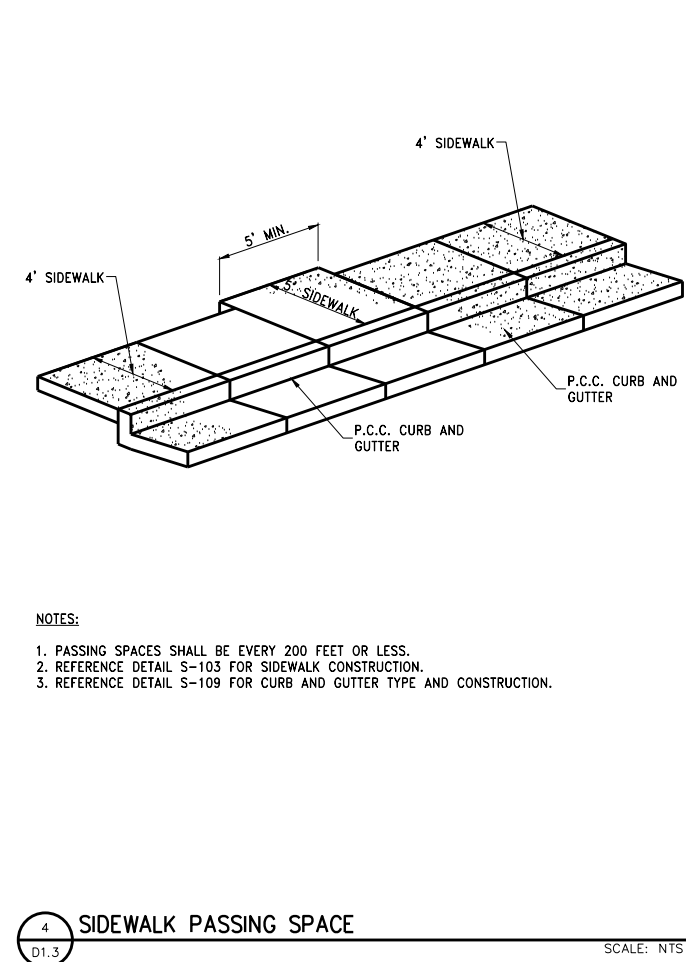
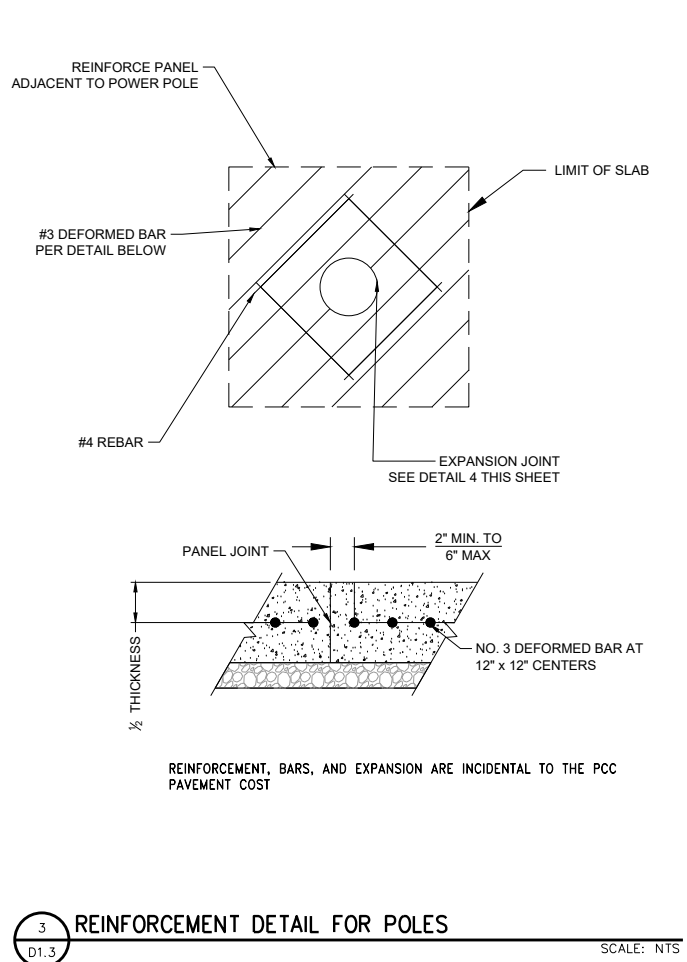
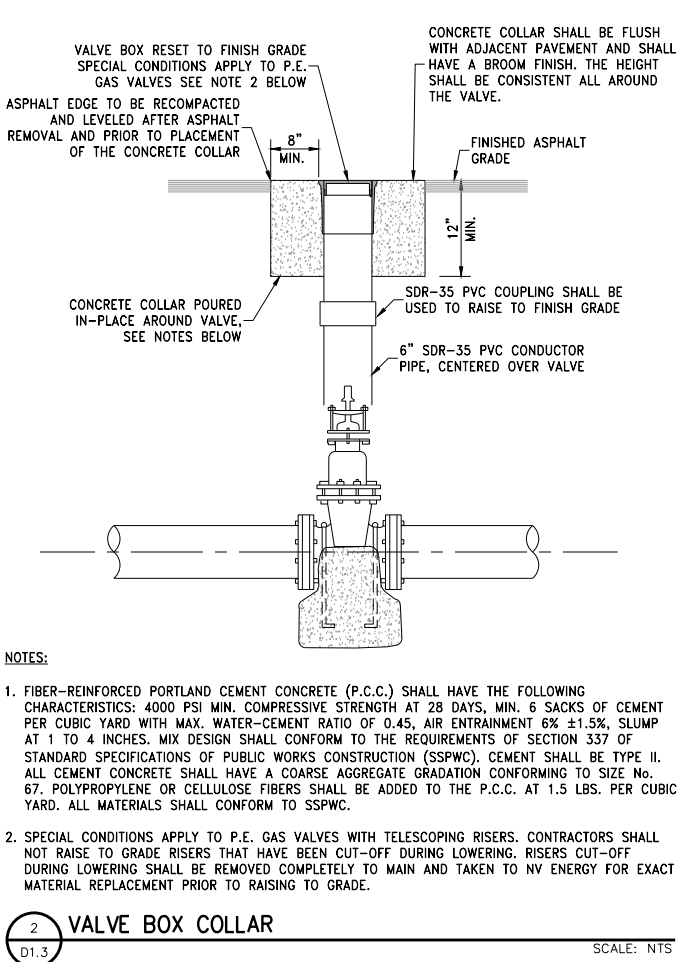
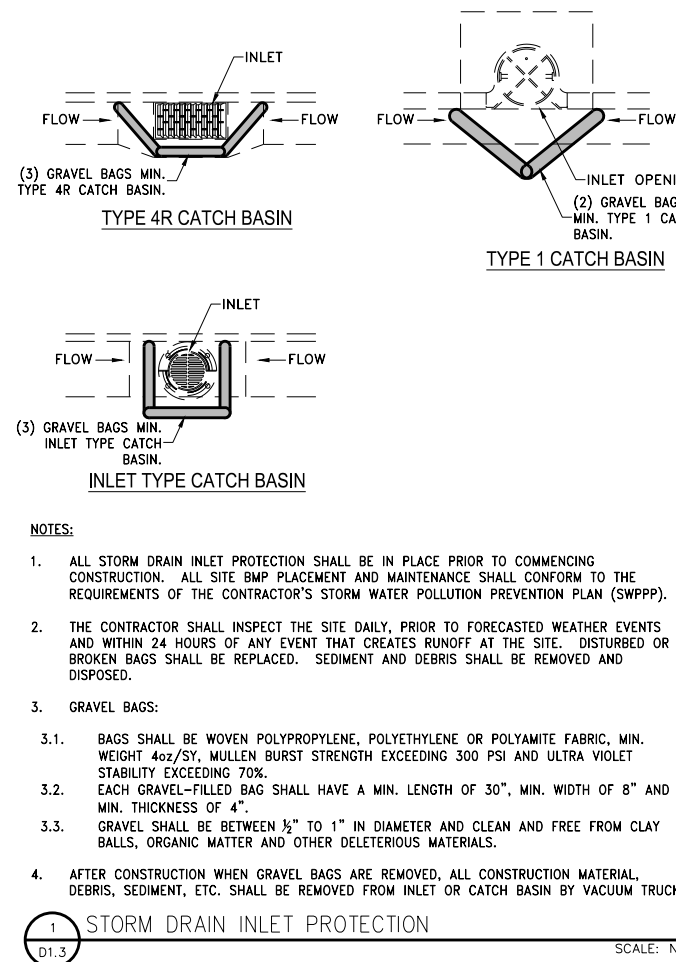
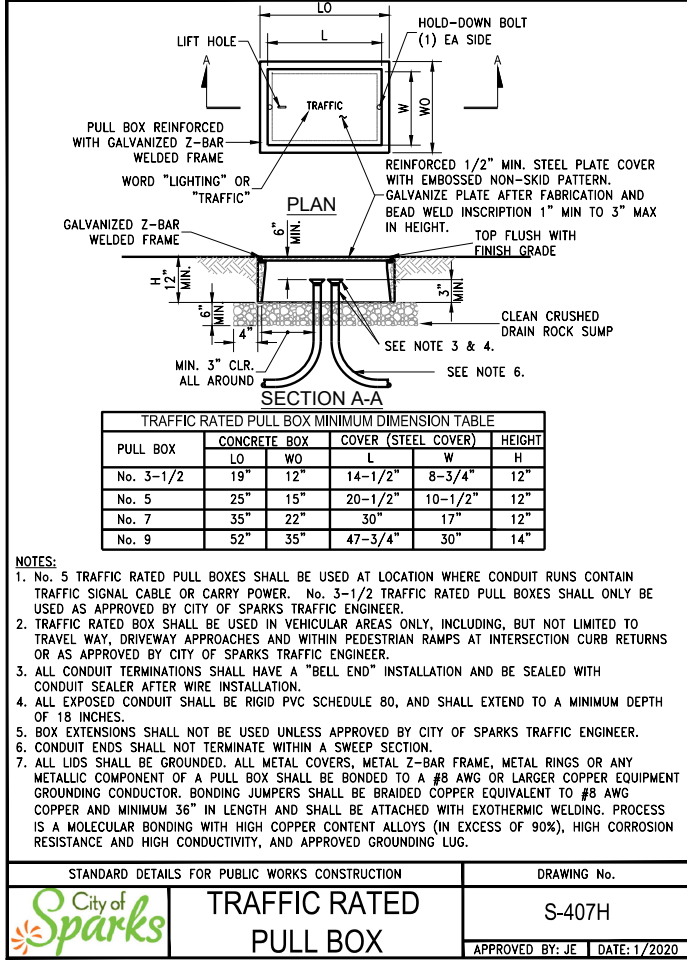
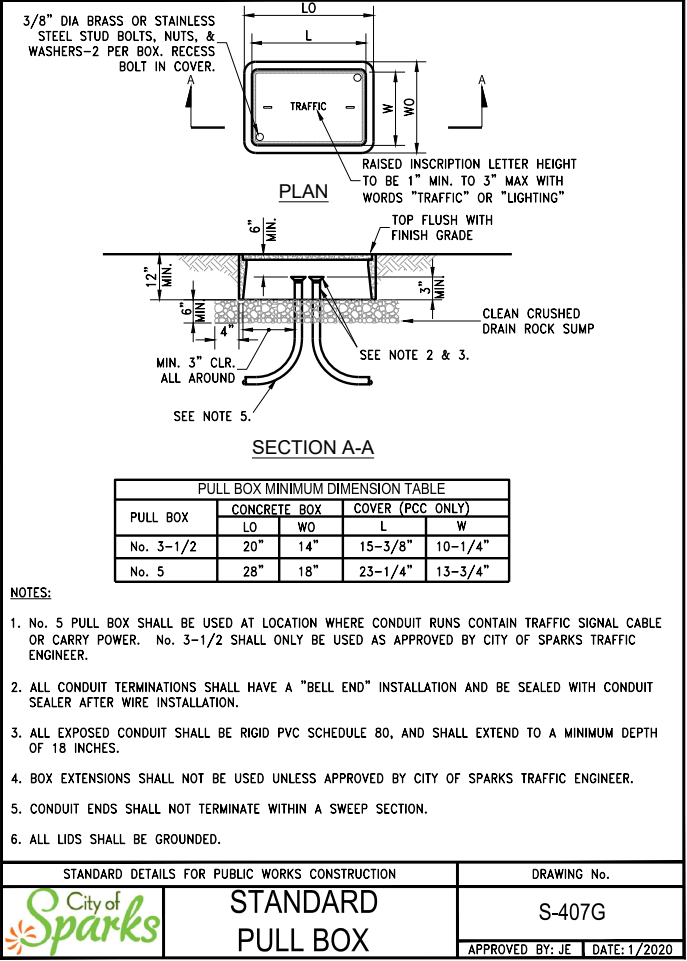
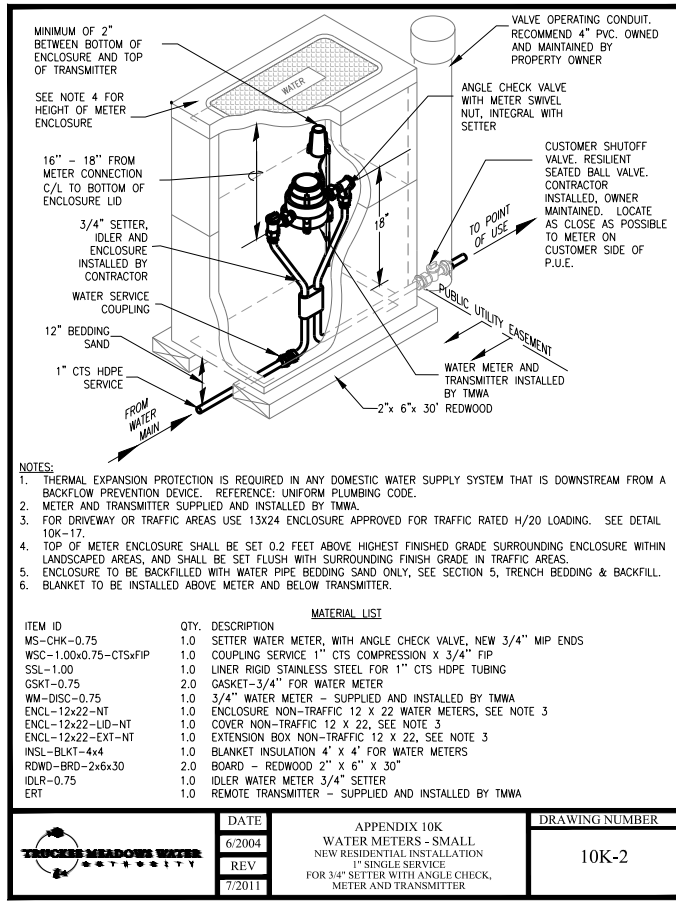
BID SET
NOT FOR CONSTRUCTION
MARCH 2026

BAR IS 1 INCH ON ORIGINAL DRAWING
0 1"
IF NOT ONE INCH ON THIS SHEET, ADJUST SCALES ACCORDINGLY

D1.2

DRAWN BY: NAC/AH
DESIGNED BY: NAC/AH
CHECKED BY: IPN
JOB NO.: 10415.004

L:\A\Proj\10415.004 - C05 CDBG Phase 3 Design\DWG\Civil\Sheets\10415004 - Details.dwg:1.2 DETAILS
03/19/2026 11:22 am ohenrickson



LUMOS & ASSOCIATES

950 SANDHILL ROAD, SUITE 100
RENO, NV 89521
TEL: 775.827.6111

WWW.LUMOSINC.COM
INFO@LUMOSINC.COM

© LUMOS & ASSOCIATES, INC. THIS DRAWING IS THE PROPERTY OF LUMOS & ASSOCIATES, INC. USE OR REPRODUCTION OF THIS DRAWING, IN WHOLE OR IN PART, WITHOUT THE WRITTEN PERMISSION OF LUMOS & ASSOCIATES, INC. IS STRICTLY PROHIBITED. THIS DRAWING IS NOT TO BE USED FOR ANY PROJECT OTHER THAN THE PROJECT FOR WHICH IT WAS PREPARED.

REGISTERED PROFESSIONAL ENGINEER - STATE OF NEVADA
IAN NEELEY
Exp. 12/31/27
C.E.I.
No. 033445
03/19/26

REGIONAL TRANSPORTATION COMMISSION

CDBG PHASE 3

DETAILS

NEVADA

SPARKS

WASHOE

BY

DESCRIPTION

REV. DATE

BAR IS 1 INCH ON ORIGINAL DRAWING

0 1"

IF NOT ONE INCH ON THIS SHEET, ADJUST SCALES ACCORDINGLY

D1.3

DRAWN BY: NAC/AH
DESIGNED BY: NAC/AH
CHECKED BY: IPN
JOB NO.: 10415.004

BID SET
NOT FOR CONSTRUCTION
MARCH 2026

L:\A\Proj\10415.004 - C05 CDBG Phase 3 Design\DWG\Civil\Sheets\10415004 - Details.dwg:1.3 DETAILS, 03/19/2026 11:22 am ohenricksen