

APN: N/A
When Recorded mail Document to:
Truckee Meadows Water Authority
Water Resources Dept.
P.O. Box 30013
Reno, NV 89520-3013

WATER RIGHTS QUITCLAIM DEED

THIS INDENTURE, made and entered into this _____ day of _____, 2014 by and between CITY OF SPARKS, a municipal corporation existing under the laws of the State of Nevada, hereinafter referred to as "The City", and the TRUCKEE MEADOWS WATER AUTHORITY, a Joint Powers Authority entity created pursuant to a cooperative agreement among the cities of Reno, Nevada, Sparks, Nevada and Washoe County, Nevada, pursuant to N.R.S. Chapter 277, hereinafter referred to as "The Authority".

RECITALS

WHEREAS, The City holds title to certain water and water rights as more particularly described in Exhibit "A" and Exhibit "B" attached hereto and incorporated herein by reference (the "Surface Water Rights"), which consist of water rights from the Truckee River or its tributaries originally adjudicated for irrigation and other uses in the Final Decree entered into September 8, 1944 in that certain action entitled The United States of America, Plaintiff, vs. Orr Water Ditch Company, et al, Defendants, the same in Equity Docket No. A-3 in the District Court of the United States in and for the District of Nevada; and

WHEREAS, The City holds title to certain groundwater rights, as approved by the Nevada State Engineer and on file with the Division of Water Resources, State of Nevada and as more particularly described in Exhibit "C" attached hereto and incorporated herein by reference (the "Groundwater Rights", together with the "Surface Water Rights" collectively referred to as the "Water Rights"); and

WHEREAS, The Authority is a joint powers authority of which The City is a member, and is a public purveyor of domestic and municipal water service within the municipal limits of the City of Sparks;

WHEREAS, The City acquired title to the Water Rights for, and the Water Rights have been and continue to be used by The Authority for, the specific purpose of supporting will serve commitments for domestic and municipal water service within the municipal limits of the City of Sparks;

WHEREAS, The City and The Authority desire The City to convey to The Authority all of its right, title and interest in the Water Rights which support and are used by The Authority in the supply of municipal and domestic water to the areas The Authority serves within the limits of the City of Sparks, on the terms and conditions herein.

WITNESSETH:

The City, for good and valuable consideration, the receipt whereof is hereby acknowledged, does by these presents hereby release, convey and forever QUITCLAIM unto The Authority, and to its successors and assigns forever, in an **As Is** condition and without warranty of any kind or nature, all of The City's right, title, and interest in and to those certain water and water rights more particularly described in Exhibits "A", "B" and "C" attached hereto and incorporated herein, including without limitation any and all rights arising in connection with pending Applications to Change, Permits and Certificates related to such Water Rights on file in the office of the Nevada State Engineer.

The City acknowledges and agrees it is the intention of The City to convey to The Authority all Water Rights dedicated to The City for domestic and/or municipal water service purposes and which support will serve commitments of The Authority or its predecessor in interest. If it is determined that Exhibits "A", "B" and "C" do not include all of such Water Rights intended to be conveyed, The City will execute, acknowledge and deliver to The Authority a water rights quitclaim deed or deeds in form and substance similar to this deed which specifically identifies and conveys each such Water Rights not previously conveyed.

To have and to hold said Water Rights together with the tenements, hereditaments and appurtenances thereunto belonging or appertaining and the reversion and reversions, remainder and remainders, rents, issues, and profits thereof unto The Authority, its successors and assigns, forever.

The Authority joins in the execution of this Deed for the purpose of evidencing its agreement to assume all obligations and responsibilities (1) related to the Water Rights and water service they supply, (2) to pay all fees assessed by the Nevada Division of Water Resources required for the permitting of any pending Applications or Proofs required on any Permits filed or issued on any of the Water Rights; (3) to pay all legal fees incurred in the defense of any Applications filed on any of the Water Rights if The Authority determines such defense necessary; and (4) to pay all water master fees and charges that may hereafter become due and payable with respect to the Water Rights.

The City and Authority further agree that upon the conveyance of the Water Rights to Authority the City of Sparks Water Treatment and Distribution Agreement dated November 13, 1989 and any Water Service Agreements governing the

treatment of such Water Rights from City to Authority (or its predecessors), are no longer applicable as to such Water Rights transferred hereby.

IN WITNESS WHEREOF, the parties hereto have caused their names to be hereunto subscribed the day and year first above written.

CITY OF SPARKS

TRUCKEE MEADOWS WATER AUTHORITY

By: _____

By: _____

Name: _____

Name: _____

Title: _____

Title: _____

STATE OF NEVADA)
) ss.
COUNTY OF WASHOE)

This instrument was acknowledged before me on _____, 2014,
by _____ as _____ of
CITY OF SPARKS, on behalf of said municipal corporation therein named.

Notary Public

STATE OF NEVADA)
) ss.
COUNTY OF WASHOE)

This instrument was acknowledged before me on _____, 2014
by _____ as _____ of
TRUCKEE MEADOWS WATER AUTHORITY, on behalf of said Joint Powers
Authority therein named.

Notary Public

EXHIBIT A
Surface Water Rights - City of Sparks

	Orr Claim No.	Deed No.	AF	GRANTOR	GRANTEE	Recording Deed Date	Recording No.	Application/Permit No.	Cert. No.	TROA Application No.
1	52.0	012	1.00	SIERRA PACIFIC RESOURCES	CITY OF SPARKS	1990-JUL-13	1413235	57114	14486	
2	54.0	003	4.85	HIGH SIERRA CONSTRUCTION, INC.	CITY OF SPARKS	1993-JUL-16	1692924	74921		
3	54.0	003	7.39	HUNTER, J.W. & BERNADINE	CITY OF SPARKS	1993-JUL-16	1692925	74921		
4	55.0	007	0.71	POWELL, A.L. & M.B.	CITY OF SPARKS	1985-DEC-04	1037930	62853		
5	55.0	011	0.24	SIERRA PACIFIC RESOURCES	CITY OF SPARKS	1994-SEP-08	1831554	62853		
6	55.0	011-01	1.64	SIERRA PACIFIC RESOURCES	CITY OF SPARKS	1994-SEP-08	1831555	62853		
7	55.0	012	7.70	SPARKS NUGGET, INC.	CITY OF SPARKS	1997-FEB-06	2070795	77619		
8	56.0	001	74.94	SPARKS NUGGET, INC.	CITY OF SPARKS	1997-FEB-06	2070795	77619		
9	64.0	010	4.79	SIERRA PACIFIC RESOURCES	CITY OF SPARKS	1995-APR-07	1884413	78009		
10	65.0	006	14.12	NORTH TRUCKEE DEVELOPMENT GROUP	CITY OF SPARKS	1984-OCT-16	956473	68273		
11	65.0	019	7.11	NORTH TRUCKEE DEVELOPMENT GROUP	CITY OF SPARKS	1987-JUN-02	1167298	68273		
12	65.0	033	0.93	SIERRA PACIFIC POWER COMPANY	CITY OF SPARKS	1992-SEP-10	1604306	67468		
13	65.0	034	2.98	SIERRA PACIFIC POWER COMPANY	CITY OF SPARKS	1992-JUL-02	1585334	67468		
14	65.0	035	0.34	SIERRA PACIFIC POWER COMPANY	CITY OF SPARKS	1992-JUL-02	1585335	67468		
15	65.0	037	2.75	SIERRA PACIFIC POWER COMPANY	CITY OF SPARKS	1993-MAY-20	1675672	67467		
16	65.0	040	37.61	BARKER HOMES, INC.	CITY OF SPARKS	1997-AUG-22	2128044	63073		
17	65.0	040-01	5.97	BARKER HOMES, INC.	CITY OF SPARKS	1997-AUG-22	2128044	76514		
18	68.0	001	3.28	BARKER HOMES, INC.	CITY OF SPARKS	1997-AUG-22	2128044	63073		
19	68.0	001-01	3.20	BARKER HOMES, INC.	CITY OF SPARKS	1997-AUG-22	2128044	63073		
20	78.0	011	7.10	MATHIESON, S.H. & P.Z.	CITY OF SPARKS	1988-APR-22	1240924	57934		
21	78.0	015	3.60	WASHOE COUNTY SCHOOL DISTRICT	CITY OF SPARKS	1991-JUN-20	1488475	57934		
22	78.0	016-01	0.88	SIERRA PACIFIC POWER COMPANY	CITY OF SPARKS	1994-SEP-08	1831556	62853		78022
23	78.0	016-01	0.28	SIERRA PACIFIC POWER COMPANY	CITY OF SPARKS	1994-NOV-23	1851802	62853		78022
24	78.0	016-01	0.42	SIERRA PACIFIC POWER COMPANY	CITY OF SPARKS	1995-APR-07	1884411	62853		78022
25	81.0	001	28.56	KILEY, L. DAVID AND DAVID A.	CITY OF SPARKS	1993-NOV-17	1733397	58558	15655	
26	81.0-82.0	007	6.62	DERMODY INDUSTRIAL GROUP JT. VENTURE	CITY OF SPARKS	1993-FEB-03	1643639	79772		
27	86.0	003	0.94	REICH, ORBAN	CITY OF SPARKS	1987-JUN-02	1167294	62853		78022
28	86.0	003-01	0.04	REICH, ORBAN	CITY OF SPARKS	1987-JUN-02	1167294	79133		
29	86.0	010	5.87	SIERRA PACIFIC RESOURCES	CITY OF SPARKS	1994-SEP-8	1831552	62853		78022
30	91.0-91a	001-02	5.53	SIERRA PACIFIC POWER COMPANY	CITY OF SPARKS	1994-NOV-23	1851801	62141		
31	91.0-91a	001-02	1.66	SIERRA PACIFIC POWER COMPANY	CITY OF SPARKS	1994-NOV-23	1851803	62141		
32	91.0-91a	001-02	2.72	SIERRA PACIFIC POWER COMPANY	CITY OF SPARKS	1995-JAN-27	1867237	62141		
33	94.0-94a	001	4.59	WALKER, R.S. & B.M.	CITY OF SPARKS	1989-OCT-19	1356815	0		
34	100.0	001-01	1.07	SIERRA PACIFIC POWER COMPANY	CITY OF SPARKS	1997-AUG-22	2128045	63060		
35	100.0	001-01	10.49	SIERRA PACIFIC POWER COMPANY	CITY OF SPARKS	1997-AUG-8	2124332	63060		
36	100.0	001-01	0.41	SIERRA PACIFIC POWER COMPANY	CITY OF SPARKS	1997-SEP-26	2139216	63060		
37	102.0	003	2.26	MOGUL WATER COMPANY	CITY OF SPARKS	1997-MAY-09	2096844	62645	17412	
38	106.0-107.0	001	1.44	WARREN, JAMES & HARRIETT PETRA	CITY OF SPARKS	1988-SEP-26	1276229	70881		
39	111.0	001	21.19	SIERRA PACIFIC POWER COMPANY	CITY OF SPARKS	1994-FEB-22	1767382	59590	14998	
40	111.0	001	5.00	SIERRA PACIFIC POWER COMPANY	CITY OF SPARKS	1994-FEB-22	1767381	59590	14998	
41	111.0	001	48.20	SIERRA PACIFIC POWER COMPANY	CITY OF SPARKS	1994-FEB-22	1767384	59590	14998	
42	127.0	003	1.68	NIELSEN, R.F. & GRIFFIN, T.R.	CITY OF SPARKS	1993-MAY-20	1675669	62619		78021
43	127.0	005	0.79	BOOHER, M.R. & B.	CITY OF SPARKS	1989-FEB-03	1303199	62619		78021
44	127.0	007	0.52	SIERRA PACIFIC POWER COMPANY	CITY OF SPARKS	1988-APR-22	1240908	62619		78021
45	127.0	008	0.86	NIELSEN, R.F. & GRIFFIN, T.R.	CITY OF SPARKS	1993-MAY-20	1675669	70833		
46	127.0	009	0.82	BOOHER, M.R. & B.	CITY OF SPARKS	1989-APR-05	1315334	62619		78021
47	128.0	007	9.34	THE BROWN TRUST	CITY OF SPARKS	1986-MAY-21	1072933	57371	15783	
48	128.0	011	1.88	THE BROWN TRUST	CITY OF SPARKS	1988-APR-22	1240930	57371	15783	

EXHIBIT A
Surface Water Rights - City of Sparks

	Orr Claim No.	Deed No.	AF	GRANTOR	GRANTEE	Recording Deed Date	Recording No.	Application/ Permit No.	Cert. No.	TROA Application No.
49	128.0	020	2.06	THE BROWN TRUST	CITY OF SPARKS	1994-JUN-01	1803097	62619		
50	128.0	020-01	5.81	THE BROWN TRUST	CITY OF SPARKS	1994-JUN-01	1803097	62619		
51	133.0	001	2.49	KINDER-CARE LEARNING CENTER, INC.	CITY OF SPARKS	1985-JUL-25	1011451	76025		
52	133.0	002	1.79	FIRST FEDERAL S/L ASSOC. OF NV.	CITY OF SPARKS	1986-MAR-21	1072930	76025		
53	142.0	005	1.62	DEMPSEY CONSTRUCTION OF NV, LLC	CITY OF SPARKS	1997-FEB-11	2071821	62631	16967	
54	142.0	006	23.65	LOEB ENTERPRISES LIMITED LIABILITY CO.	CITY OF SPARKS	1997-FEB-11	2071822	62631	16967	
55	142.0	007	97.74	MOGUL WATER COMPANY	CITY OF SPARKS	1997-MAY-09	2096844	62646	17031	
56	153.0	006	0.90	BARRETT, G. & P.L.	CITY OF SPARKS	1985-JUN-07	1001989	61753		
57	153.0	014	1.53	BOOHER, M.R. & B.	CITY OF SPARKS	1988-AUG-01	1263449	61753		
58	153.0	024	0.49	BOOHER, M.R. & B.	CITY OF SPARKS	1988-APR-22	1240915	61753		
59	153.0	027	3.15	SIERRA PACIFIC RESOURCES	CITY OF SPARKS	1995-APR-07	1884413	73778		
60	153.0	032-01	3.16	SIERRA PACIFIC POWER COMPANY	CITY OF SPARKS	1997-OCT-24	2147992	74189		
61	160.0	003	11.22	BIGHORN DEVELOPMENT II, LTD	CITY OF SPARKS	1997-JAN-22	2065977	62831		
62	161.0	001	1.14	FRED W. STEINER JR. FAMILY TRUST AGMT.	CITY OF SPARKS	1996-APR-03	1982648	77914		
63	165.0	008	1.82	ESTATE OF DOLORES L. HALLEY	CITY OF SPARKS	1989-JUN-14	1330763	61753		
64	168.0	015-02	0.05	WESTPAC UTILITIES	CITY OF SPARKS	1994-SEP-08	1831547	61753		
65	168.0	015-02	0.05	WESTPAC UTILITIES	CITY OF SPARKS	1994-SEP-08	1831548	61753		
66	168.0	015-02	1.94	WESTPAC UTILITIES	CITY OF SPARKS	1994-JUN-01	1803102	61753		
67	168.0	020	4.15	BARKER HOMES, INC. aka BARKER HOMES	CITY OF SPARKS	1997-AUG-08	2124328	73640		
68	168.0	020-01	3.06	BARKER HOMES, INC. aka BARKER HOMES	CITY OF SPARKS	1997-AUG-08	2124328	77914		
69	178.5/205.0	021	1.24	SIERRA PACIFIC RESOURCES	CITY OF SPARKS	1995-APR-07	1884413	76922		
70	179.0	001	0.75	KILLIAN, E.F. & ROGGENBIHL, W.R.	CITY OF SPARKS	1989-OCT-17	1356238	73645		
71	179.0	001	1.61	THE KILLIAN COMPANY	CITY OF SPARKS	1989-OCT-17	1356237	73645		
72	179.0/257.0	011	3.63	SIERRA PACIFIC RESOURCES	CITY OF SPARKS	1995-APR-07	1884413	73645		
73	179.0	029	4.50	SIERRA PACIFIC RESOURCES	CITY OF SPARKS	1995-APR-07	1884413	74086		
74	179.0	070	3.01	CAIN, V.H. & E.J.	CITY OF SPARKS	1985-JUL-25	1011452	74086		
75	179.0	072	0.53	KAUFFMAN, D.F.	CITY OF SPARKS	1988-JAN-15	1219636	74086		
76	188.0	006	5.20	WASHOE COUNTY SCHOOL DISTRICT	CITY OF SPARKS	1991-JUN-20	1488475	58810		
77	191.0	009	2.62	PAYLESS CASHWAYS, INC.	CITY OF SPARKS	1987-JUN-02	1167292	58810		
78	191.0	015	4.01	SIERRA PACIFIC RESOURCES	CITY OF SPARKS	1994-SEP-08	1831550	79982		
79	191.0	016	10.72	DIVERSIFIED DVLP. & CONSTRUCTION	CITY OF SPARKS	1996-JUL-19	2013913	79982		
80	194.0	001	11.19	BIGHORN DEVELOPMENT II, LTD.	CITY OF SPARKS	1996-JUL-30	2016456	62278		
81	194.0	002	14.54	NORTHWEST ASSOCIATES, INC.	CITY OF SPARKS	1994-JUN-01	1803096	75217		
82	194.0	002-01	7.92	NORTHWEST ASSOCIATES, INC.	CITY OF SPARKS	2006-OCT-10	3448804	73209		
83	201.0	001-01	0.61	WESTPAC UTILITIES	CITY OF SPARKS	1992-NOV-23	1624753	63125		
84	205.0	016	1.10	FLETCHER, P.M. & K.A.	CITY OF SPARKS	1986-MAY-24	1072929	58923		
85	207.0	006	8.49	JOHNNY RIBEIRO BUILDER, INC.	CITY OF SPARKS	1989-JUL-07	1335667	63125		
86	207.0	017	0.86	SIERRA PACIFIC RESOURCES	CITY OF SPARKS	1994-SEP-08	1831554	63125		
87	207.0	020	7.68	BIGHORN DEVELOPMENT II, LTD.	CITY OF SPARKS	1996-JUL-30	2016456	62279		
88	208.0	007	96.15	SIERRA PACIFIC POWER COMPANY	CITY OF SPARKS	1991-SEP-19	1510015	73634		78027
89	208.0	009	3.88	SIERRA PACIFIC POWER COMPANY	CITY OF SPARKS	1991-NOV-21	1525381	58678		
90	208.0	017	46.26	LEWIS HOMES OF NEVADA	CITY OF SPARKS	1994-MAR-25	1779864	63125		
91	208.0	018	46.02	LEWIS HOMES OF NEVADA	CITY OF SPARKS	1994-DEC-09	1855529	63125		
92	208.0	019	28.04	LEWIS HOMES OF NEVADA	CITY OF SPARKS	1996-APR-03	1982642	63125		
93	208.0	020	15.94	LEWIS HOMES OF NEVADA	CITY OF SPARKS	1995-DEC-29	1982641	63125		
94	208.0	020	4.71	FOOTHILL INVESTMENT COMPANY	CITY OF SPARKS	1996-SEP-11	2029151	63125		
95	208.0	017-020	113.55	FOOTHILL INVESTMENT COMPANY	CITY OF SPARKS	1996-SEP-25	2033612	63125		
96	208.0	021	10.36	FOOTHILL INVESTMENT COMPANY	CITY OF SPARKS	1996-SEP-11	2029152	63125		

EXHIBIT A
Surface Water Rights - City of Sparks

	Orr Claim No.	Deed No.	AF	GRANTOR	GRANTEE	Recording Deed Date	Recording No.	Application/ Permit No.	Cert. No.	TROA Application No.
97	208.0	021	14.55	FOOTHILL INVESTMENT COMPANY	CITY OF SPARKS	1996-SEP-11	2029152	77984		
98	208.0	021	3.45	FOOTHILL INVESTMENT COMPANY	CITY OF SPARKS	1996-SEP-11	2029152	0		
99	208.0	022	29.90	FOOTHILL INVESTMENT COMPANY	CITY OF SPARKS	1997-MAR-11	2078887	62770		
100	208.5	012	1.13	LEON LEGORBURU FAMILY TRUST	CITY OF SPARKS	1985-JUN-07	1001995	63125		
101	208.5	022	6.30	DAGMAR G. YOAKAM TRUST	CITY OF SPARKS	1989-JUN-14	1330755	63125		
102	208.5	030	0.75	SIERRA PACIFIC RESOURCES	CITY OF SPARKS	1995-JUN-22	1902792	63125		
103	208.5	031	19.14	TEDDY BEAR HAVAS MOTORS, INC.	CITY OF SPARKS	1994-JUN-01	1803098	63125		
104	208.5	032	15.96	BIGHORN DEVELOPMENT II, LTD.	CITY OF SPARKS	1996-JUL-30	2016456	62279		
105	209.0	006	1.00	OPFER, R.J. & P. AND OPFER, J.H. & L.L.	CITY OF SPARKS	1986-MAY-21	1072935	76109		
106	209.0	022	7.20	BIGHORN DEVELOPMENT II, LTD.	CITY OF SPARKS	1997-JAN-22	2065977	62830	17701	
107	211.0	007-03	0.30	SIERRA PACIFIC POWER COMPANY	CITY OF SPARKS	1997-SEP-16	2135050	63061		78023
108	211.0	007-03	0.71	SIERRA PACIFIC POWER COMPANY	CITY OF SPARKS	1998-FEB-23	2181557	63061		78023
109	211.0	007-03	20.16	SIERRA PACIFIC POWER COMPANY	CITY OF SPARKS	1997-JUN-10	2106623	63061		78023
110	211.0	007-03	5.17	SIERRA PACIFIC POWER COMPANY	CITY OF SPARKS	1997-AUG-22	2128045	63061		78023
111	211.0	008-01	1.01	SIERRA PACIFIC POWER COMPANY	CITY OF SPARKS	1998-MAR-26	2192625	79137		
112	211.0	008-01	0.36	SIERRA PACIFIC POWER COMPANY	CITY OF SPARKS	1998-APR-23	2203081	79137		
113	215.0	002	3.00	BARKER HOMES, INC. aka BARKER HOMES	CITY OF SPARKS	1997-AUG-08	2124328	63008	17609	
114	215.0	005	40.28	SPINNAKER SPARKS, LLC	CITY OF SPARKS	1998-APR-03	2196411	64058	17724	
115	215.0	007	8.56	MULLINS, RICHARD C. & JEAN M.	CITY OF SPARKS	1998-APR-03	2196412	64058	17724	
116	218.0	004	0.81	PAYLESS CASHWAYS, INC.	CITY OF SPARKS	1987-JUN-02	1167292	63125		
117	220.0	027	6.00	DOUBLE DIAMOND RANCH LIMITED PTRNERSHIP	CITY OF SPARKS	1998-FEB-06	2177598	63835	17367	
118	221.0	011	0.90	BARKER HOMES, INC. aka BARKER HOMES	CITY OF SPARKS	1997-AUG-08	2124328	75769		
119	232.0	011	0.72	BARKER HOMES, INC. aka BARKER HOMES	CITY OF SPARKS	1997-AUG-08	2124328	76096		
120	236.0	001	0.72	BOOHER, M.R. & B.	CITY OF SPARKS	1987-APR-27	1157941	58924		
121	236.0	001	0.72	BOOHER, M.R. & B.	CITY OF SPARKS	1987-APR-27	1157943	58924		
122	236.0	001	0.85	BOOHER, M.R. & B.	CITY OF SPARKS	1987-APR-27	1157945	58924		
123	236.0	029	0.47	SIERRA PACIFIC RESOURCES	CITY OF SPARKS	1991-AUG-30	1505075	58924		
124	236.0	037	0.51	SIERRA PACIFIC RESOURCES	CITY OF SPARKS	1994-SEP-08	1831550	63310		
125	236.0	040	1.66	SIERRA PACIFIC RESOURCES	CITY OF SPARKS	1995-JUN-22	1902792	63310		
126	236.0	043	1.00	SIERRA PACIFIC RESOURCES	CITY OF SPARKS	1996-APR-19	1986850	63310		
127	236.0	045	1.11	BIGHORN DEVELOPMENT II, LTD.	CITY OF SPARKS	1996-JUL-30	2016456	62280		
128	236.0	046	0.72	BARKER HOMES, INC. aka BARKER HOMES	CITY OF SPARKS	1997-AUG-08	2124328	75471		
129	237.0	001	0.64	CALITRI, JUANITA A.	CITY OF SPARKS	1988-JAN-04	1216872	63310		
130	237.0	003	0.48	SIERRA PACIFIC RESOURCES	CITY OF SPARKS	1995-JAN-11	1862901	63310		
131	240.0	002	0.56	BOOHER, M.R. & B.	CITY OF SPARKS	1988-APR-22	1240918	63310		
132	241.0	001	0.65	BOOHER, M.R. & B.	CITY OF SPARKS	1988-AUG-01	1263448	63310		
133	242.0	004	0.63	NIELSEN, R.F. & GRIFFIN, T.R.	CITY OF SPARKS	1988-JAN-15	1219630	58924		
134	242.0	009	0.54	NIELSEN, R.F. & GRIFFIN, T.R.	CITY OF SPARKS	1988-JAN-15	1219631	58924		
135	242.0	015	0.71	BOOHER, M.R. & B.	CITY OF SPARKS	1988-AUG-29	1269956	58924		
136	242.0	016	1.34	NIELSEN, R.F. & GRIFFIN, T.R.	CITY OF SPARKS	1988-NOV-01	1284609	58924		
137	242.0	027	0.77	BOOHER, M.R. & B.	CITY OF SPARKS	1989-APR-05	1315327	58924		
138	242.0	038	1.33	SIERRA PACIFIC RESOURCES	CITY OF SPARKS	1995-JUN-22	1902796	63310		
139	242.0	040	0.68	SIERRA PACIFIC RESOURCES	CITY OF SPARKS	1995-JAN-11	1862901	63310		
140	242.0	044	0.77	SOLARI, FLORA J. aka SOLARI, FLORA	CITY OF SPARKS	1994-JUN-01	1803094	63310		
141	242.0	045	0.54	BARKER HOMES, INC. aka BARKER HOMES	CITY OF SPARKS	1997-AUG-08	2124328	63310		
142	243.0	007	0.38	SIERRA PACIFIC POWER COMPANY	CITY OF SPARKS	1996-MAR-11	1975366	63310		
143	244.0	006	0.54	SIERRA PACIFIC RESOURCES	CITY OF SPARKS	1995-JUN-22	1902792	63310		
144	249.0	006	0.20	STANFORD, R.R.	CITY OF SPARKS	1986-MAY-21	1072932	63310		

EXHIBIT A
Surface Water Rights - City of Sparks

	Orr Claim No.	Deed No.	AF	GRANTOR	GRANTEE	Recording Deed Date	Recording No.	Application/ Permit No.	Cert. No.	TROA Application No.
145	249.0	007	0.60	BOOHER, M.R. & B.	CITY OF SPARKS	1986-OCT-28	1111891	63310		
146	249.0	008	0.59	BOOHER, M.R. & B.	CITY OF SPARKS	1987-APR-27	1157938	63310		
147	249.0	013	0.55	BOOHER, M.R. & B.	CITY OF SPARKS	1987-APR-27	1157940	63310		
148	249.0	017	0.55	BOOHER, M.R. & B.	CITY OF SPARKS	1988-APR-22	1240914	63310		
149	249.0	021	0.56	SIERRA PACIFIC RESOURCES	CITY OF SPARKS	1995-APR-07	1884413	63310		
150	249.0	023	0.55	SIERRA PACIFIC RESOURCES	CITY OF SPARKS	1995-JUN-22	1902796	63310		
151	249.0	026	0.60	SIERRA PACIFIC RESOURCES	CITY OF SPARKS	1996-APR-18	1986850	63310		
152	251.0	008	1.23	BOOHER, M.R. & B.	CITY OF SPARKS	1988-AUG-01	1263450	72289		
153	251.0	008	1.16	BOOHER, M.R. & B.	CITY OF SPARKS	1988-AUG-01	1263451	72289		
154	251.0	008	0.78	BOOHER, M.R. & B.	CITY OF SPARKS	1988-AUG-01	1263452	72289		
155	251.0	008	0.38	BOOHER, M.R. & B.	CITY OF SPARKS	1988-AUG-01	1263453	72289		
156	251.0	014	4.37	BOOHER, M.R. & B.	CITY OF SPARKS	1989-APR-5	1315334	72289		
157	251.0	029	1.36	SIERRA PACIFIC RESOURCES	CITY OF SPARKS	1995-MAR-02	1875343	72289		
158	251.0	032	1.52	BOOHER, M.R. & B.	CITY OF SPARKS	1989-FEB-03	1303199	72289		
159	254.0	004	38.91	NEVADA LAKESHORE COMPANY, INC. & FRED KOHLENBERG FAMILY TRUST	CITY OF SPARKS	1996-JUL-19	2013925	62271		
160	254.0	004		FRED KOHLENBERG FAMILY TRUST	CITY OF SPARKS	1996-JUL-19	2013925	62271		
161	259.0	005	1.76	SIERRA PACIFIC RESOURCES	CITY OF SPARKS	1995-MAR-02	1875343	63310		
162	264.0	010	52.48	SIERRA PACIFIC POWER COMPANY	CITY OF SPARKS	1991-SEP-19	1510016	57489		78013
163	264.0	022	1.62	ALBERTSON'S, INC.	CITY OF SPARKS	1993-FEB-03	1643642	57489		78013
164	264.0	031	0.42	SIERRA PACIFIC POWER COMPANY	CITY OF SPARKS	1996-APR-18	1986859	61637		78017
165	264.0	031	3.27	SIERRA PACIFIC POWER COMPANY	CITY OF SPARKS	1996-APR-18	1986856	61637		78017
166	264.0	031	0.68	SIERRA PACIFIC POWER COMPANY	CITY OF SPARKS	1996-MAR-11	1975361	61637		78017
167	264.0	031	0.40	SIERRA PACIFIC POWER COMPANY	CITY OF SPARKS	1997-FEB-6	2070793	61637		78017
168	264.0	031	4.29	SIERRA PACIFIC POWER COMPANY	CITY OF SPARKS	1996-APR-3	1982640	61637		78017
169	264.0	031	16.66	SIERRA PACIFIC POWER COMPANY	CITY OF SPARKS	1996-MAY-08	1992820	61637		78017
170	264.0	031	72.87	SIERRA PACIFIC POWER COMPANY	CITY OF SPARKS	1996-APR-18	1986851	61637		78017
171	264.0	031	9.73	SIERRA PACIFIC POWER COMPANY	CITY OF SPARKS	1996-JUL-17	2013927	61637		78017
172	278.0	004	2.84	FUNDIS COMPANY	CITY OF SPARKS	1990-OCT-05	1432690	61705		
173	278.0	006	0.50	SIERRA PACIFIC RESOURCES	CITY OF SPARKS	1995-APR-07	1884413	0		
174	278.0	006-01	0.48	SIERRA PACIFIC RESOURCES	CITY OF SPARKS	1995-JAN-27	1867235	0		
175	280.0	003	0.68	BARKER HOMES, INC. aka BARKER HOMES	CITY OF SPARKS	1997-AUG-08	2124328	78850		
176	288.0	002	1.18	WASHOE CO. SCHOOL DISTRICT	CITY OF SPARKS	1991-JUN-20	1488475	61705		
177	288.0	002-01	0.13	WASHOE CO. SCHOOL DISTRICT	CITY OF SPARKS	1991-JUN-20	1488475	0		
178	301.0	004	3.66	SIERRA PACIFIC RESOURCES	CITY OF SPARKS	1995-APR-07	1884413	78490		
179	308.0	001	15.12	MEADOWVIEW HOMES	CITY OF SPARKS	1996-OCT-09	2037459	62486		
180	309.0	001	0.80	MEADOWVIEW HOMES	CITY OF SPARKS	1996-OCT-09	2037459	62486		
181	315.0	001	1.28	LEPORI, BETTINA	CITY OF SPARKS	1985-DEC-04	1037929	77718		
182	316.0	002	14.94	SYCAMORE GARDENS	CITY OF SPARKS	1996-MAR-11	1975362	75437		
183	316.0	003	10.00	SIERRA PACIFIC POWER COMPANY	CITY OF SPARKS	1997-AUG-8	2124332	75437		
184	323.0	002	25.63	JOHNSON, DONALD M.	CITY OF SPARKS	1987-APR-27	1157946	61705		78018
185	323.0	003	12.17	JOHNSON, DONALD M.	CITY OF SPARKS	1988-NOV-01	1284608	61705		78018
186	327.0	003	1.62	BAICHTEL, RICHARD L. & SHARON A.	CITY OF SPARKS	1985-DEC-04	1037927	61705		
187	327.0	003-01	0.46	ALBRITTON, ANN	CITY OF SPARKS	2004-APR-14	3021770	61705		
188	327.0	003-02	0.48	BAICHTEL, RICHARD L. & SHARON A.	CITY OF SPARKS	1985-DEC-04	1037927	0		
189	331.0	004	33.76	HAMILTON, S.C. & P. & MURPHY, C.M. & M.	CITY OF SPARKS	1989-APR-05	1315333	57791		78014
190	331.0	007	16.31	SHAWER CONSTRUCTION, INC.	CITY OF SPARKS	1992-OCT-01	1610502	61705		78018
191	331.0	008	7.79	TOMASO, L. & B.	CITY OF SPARKS	1992-JUL-02	1585332	61705		
192	331.0	009	4.00	SIERRA VISTA PROPERTIES, INC.	CITY OF SPARKS	1992-OCT-14	1613588	61705		

EXHIBIT A
Surface Water Rights - City of Sparks

	Orr Claim No.	Deed No.	AF	GRANTOR	GRANTEE	Recording Deed Date	Recording No.	Application/ Permit No.	Cert. No.	TROA Application No.
193	331.0	010	1.94	DARBY, M.W. & B. & LIGHTNER, C.E., SR. & R.E.	CITY OF SPARKS	1992-NOV-23	1624756	61705		
194	331.0	011	149.40	SADDLEBACK ASSOCIATES	CITY OF SPARKS	1993-JUL-13	1691436	57900		
195	331.0	012	2.00	VOLK, GEORGE R. & LARMA M.	CITY OF SPARKS	1994-MAR-25	1779862	58840	15035	
196	331.0	013	13.13	TOMASO, L.& B. aka TOMASO, L.D. & B.J.	CITY OF SPARKS	1994-NOV-23	1851800	61705		78018
197	331.0	014	0.77	TOMASO, B.J. & CHUBB, S.	CITY OF SPARKS	1994-NOV-23	1851799	61705		
198	331.0	015	1.68	CHUBB, D.M.& S.M.	CITY OF SPARKS	1994-NOV-23	1851805	61705		
199	331.0	017	22.80	SADDLEBACK ASSOCIATES	CITY OF SPARKS	1994-JUN-01	1803099	57900		
200	331.0	018	11.92	SADDLEBACK ASSOCIATES	CITY OF SPARKS	1993-AUG-18	1703449	57900		
201	331.0	020	0.83	SIERRA PACIFIC POWER COMPANY	CITY OF SPARKS	1996-NOV-22	2050710	79091		
202	331.0	022	2.37	KAUFFMAN, DYKE	CITY OF SPARKS	1997-AUG-08	2124329	79091		
203	331.0	023	0.70	CASEY, WILLIAM H. & MICHELLE R.	CITY OF SPARKS	1997-AUG-08	2124331	79091		
204	331.0	024	0.81	CASEY, KAREN L.	CITY OF SPARKS	1997-AUG-08	2124330	79091		
205	333.0	002	44.71	BARING VILLAGE ASSOC. LIMITED PARTNERSHIP	CITY OF SPARKS	1987-JUL-06	1175592	57791		78014
206	333.0	003	1.85	LEWIS HOMES OF NEVADA	CITY OF SPARKS	1988-MAR-15	1232427	57791		78014
207	333.0	003	10.03	LEWIS BUILDING COMPANY, INC.	CITY OF SPARKS	1988-MAR-15	1232428	57791		78014
208	333.0	005	3.76	BARING VILLAGE ASSOC. LIMITED PARTNERSHIP	CITY OF SPARKS	1988-APR-22	1240928	57791		
209	333.0	006	1.83	BARING VILLAGE ASSOC. LIMITED PARTNERSHIP	CITY OF SPARKS	1988-SEP-26	1276227	57791		
210	333.0	008	2.70	BARING VILLAGE ASSOC. LIMITED PARTNERSHIP	CITY OF SPARKS	1989-JUN-14	1330761	57791		
211	335.0	005	12.20	STUTCHMAN, T.R. & C.A.	CITY OF SPARKS	1990-OCT-05	1432692	57791		78014
212	335.0	008	11.69	SMITH, JEANNIE & PAUL	CITY OF SPARKS	1992-AUG-28	1601059	61705		78018
213	335.0	009	13.64	JOHN PAGNI	CITY OF SPARKS	1993-MAY-20	1675671	61705		78018
214	335.0-336.0	010	27.20	LEWIS HOMES OF NEVADA	CITY OF SPARKS	1992-OCT-01	1610504	61705		78018
215	335.0-336.0	010	27.20	WESTERN SUPPLY / LEWIS HOMES OF NEVADA	CITY OF SPARKS	2000-MAR-10	2429454	61705		78018
216	335.0-336.0	011	17.67	LEWIS HOMES OF NEVADA	CITY OF SPARKS	1992-OCT-01	1610504	61705		78018
217	335.0-336.0	012	11.55	LEWIS HOMES OF NEVADA	CITY OF SPARKS	1994-MAR-04	1772332	61705		78018
218	337.0-338.0	003	26.22	STUTCHMAN, T.R. & C.A.	CITY OF SPARKS	1986-MAY-21	1072937	58383		73794
219	337.0-338.0	006	2.91	GURR, R.J. & E.L.	CITY OF SPARKS	1986-SEP-17	1101148	58383		73794
220	337.0-338.0	009	0.68	NIELSEN, R.F. & GRIFFIN, T.R.	CITY OF SPARKS	1987-JAN-20	1133632	58383		73794
221	337.0-338.0	010	1.00	BOOHER, M.R. & B.	CITY OF SPARKS	1987-APR-27	1157939	58383		73794
222	337.0-338.0	016	8.31	CHURCH OF LATTER-DAY SAINTS	CITY OF SPARKS	1988-NOV-16	1287459	58383		73794
223	337.0-338.0	017	0.07	NIELSEN, R.F. & GRIFFIN, T.R.	CITY OF SPARKS	1988-NOV-01	1284609	58383		
224	337.0-338.0	024	0.82	SIERRA PACIFIC RESOURCES	CITY OF SPARKS	1990-JUL-13	1413238	58383		73794
225	337.0-338.0	025	0.80	DRAKULICH, S. J. & M. K.	CITY OF SPARKS	1990-JUL-13	1413239	58383		73794
226	337.0-338.0	027	2.57	SIERRA PACIFIC RESOURCES	CITY OF SPARKS	1990-JUL-13	1413233	58383		73794
227	337.0-338.0	029	44.42	DIVERSIFIED DVLP & CONSTRUCTION	CITY OF SPARKS	1991-APR-17	1472816	58383		73794
228	337.0-338.0	030	23.62	DIVERSIFIED DVLP & CONSTRUCTION	CITY OF SPARKS	1991-APR-17	1472816	58383		73794
229	337.0-338.0	031	21.96	DIVERSIFIED DVLP & CONSTRUCTION	CITY OF SPARKS	1991-APR-17	1472816	58383		73794
230	337.0-338.0	032	5.24	UNITED STATES POSTAL SERVICE	CITY OF SPARKS	1992-OCT-14	1613587	61705		
231	339.0	001	40.24	NEUFFER HOMES & DEVELOPMENT, INC.	CITY OF SPARKS	1998-APR-09	2198525	63651		78024
232	343.0	001	137.20	KILEY, L.D. & KILEY, D.A.	CITY OF SPARKS	1993-NOV-17	1733397	58559		73987
233	346.0	001	273.83	KILEY, L.D. & KILEY, D.A.	CITY OF SPARKS	1993-NOV-17	1733397	58559		73986
234	346.0	001-03	6.01	KILEY, L.D. & KILEY, D.A.	CITY OF SPARKS	1993-NOV-17	1733397	58559		
235	350.0-350a	001	78.83	BAILEY & MCGAH	CITY OF SPARKS	1988-NOV-23	1288993	55349	15048	
236	350.0-350a	002	65.85	PACE-TEK, INC.	CITY OF SPARKS	1989-APR-25	1320076	55349	15048	
237	350.0-350a	003	58.31	PACE-TEK, INC.	CITY OF SPARKS	1989-APR-25	1320076	55349	15048	
238	350.0-350a	004	19.28	PACE-TEK, INC.	CITY OF SPARKS	1989-APR-25	1320076	55349	15048	
239	350.0-350a	005	4.37	PACE-TEK, INC.	CITY OF SPARKS	1989-APR-25	1320076	75417		
240	350.0-350a	006	2.19	PACE-TEK, INC.	CITY OF SPARKS	1989-APR-25	1320076	75417		

EXHIBIT A
Surface Water Rights - City of Sparks

	Orr Claim No.	Deed No.	AF	GRANTOR	GRANTEE	Recording Deed Date	Recording No.	Application/ Permit No.	Cert. No.	TROA Application No.
241	350.0-350a	007	11.17	BAILEY & MCGAH	CITY OF SPARKS	1995-FEB-17	1872292	75417		
242	351.0-352.0	001	69.50	LOEB ENTERPRISES LIMITED LIABILITY CO.	CITY OF SPARKS	1996-SEP-25	2033611	61498	16573	74201
243	351.0-352.0	001-01	1.44	LOEB ENTERPRISES LIMITED LIABILITY CO.	CITY OF SPARKS	1996-SEP-25	2033611	73256		
244	358.0-359.0	001	3.99	SIERRA PACIFIC POWER COMPANY	CITY OF SPARKS	1996-OCT-28	2050713	59391		
245	358.0-359.0	001	1.56	SIERRA PACIFIC POWER COMPANY	CITY OF SPARKS	1993-SEP-27	1721374	59391		
246	358.0-359.0	001	30.91	SIERRA PACIFIC POWER COMPANY	CITY OF SPARKS	1994-AUG-22	1831551	59391		
247	358.0-359.0	001	3.43	SIERRA PACIFIC POWER COMPANY	CITY OF SPARKS	1995-MAR-27	1884412	59391		
248	369.0-370.0	004	0.75	WARNACO CONSTRUCTION COMPANY	CITY OF SPARKS	1988-APR-22	1240920	73836		
249	388.0	003	0.30	PETERS, LAURIE A.	CITY OF SPARKS	1988-JAN-04	1216871	63699		
250	388.0	010	0.26	SIERRA PACIFIC POWER COMPANY	CITY OF SPARKS	1996-MAR-11	1975366	63699		
251	394.0	002	0.71	JONES, CHARLES & MASI, EDWARD	CITY OF SPARKS	1991-AUG-30	1505073	63699		
252	394.0	003	1.77	EWERS, G. & N.	CITY OF SPARKS	1995-JAN-27	1867238	63699		
253	394.0	005	0.84	BITZ, S. & D.	CITY OF SPARKS	1996-SEP-25	2033610	63699		
254	394.0	006	0.68	BITZ, S. & D. AND THE BITZ FAMILY 1993 TRUST	CITY OF SPARKS	1997-JUL-22	2119281	77915		
255	395.0	001	7.50	BERGMANN, R.	CITY OF SPARKS	1988-JAN-04	1216873	63699		
256	396.0	003	19.18	DIVERSIFIED DEVELOPMENT & CONSTRUCTION	CITY OF SPARKS	1996-JUL-19	2013914	63699		78025
257	397.0	001	1.35	SCHNACK, W.	CITY OF SPARKS	1988-APR-22	1240922	63699		
258	414.0	002	28.30	COLEMAN DEVELOPMENT, INC.	CITY OF SPARKS	1997-JUL-11	2116310	73219		
259	414.0	003-01	0.12	SIERRA PACIFIC POWER COMPANY	CITY OF SPARKS	1997-OCT-24	2147992	73219		
260	429.0	002	2.02	BOOHER, M.R. & B.	CITY OF SPARKS	1989-FEB-03	1303199	61752		78019
261	429.0	010	0.77	SIERRA PACIFIC RESOURCES	CITY OF SPARKS	1995-APR-07	1884413	71711		
262	429.0	012	0.62	SIERRA PACIFIC RESOURCES	CITY OF SPARKS	1995-JUN-22	1902798	71711		
263	429.0	013	0.51	SIERRA PACIFIC RESOURCES	CITY OF SPARKS	1995-JUN-22	1902796	71711		
264	431.0	012	3.30	BOOHER, M.R. & B.	CITY OF SPARKS	1989-FEB-03	1303199	0		
265	431.0	042	0.59	MARSH, P.	CITY OF SPARKS	1992-JUL-02	1585336	73176		
266	431.0	051	0.89	BIGHORN DEVELOPMENT II, LTD.	CITY OF SPARKS	1996-JUL-30	2016456	62281		
267	431.0-432.0	004	2.80	SIERRA PACIFIC RESOURCES	CITY OF SPARKS	1990-FEB-28	1383349	76026		
268	431.0-432.0	005	2.22	SIERRA PACIFIC RESOURCES	CITY OF SPARKS	1990-JUN-07	1405052	76026		
269	431.0-432.0	006	2.14	SIERRA PACIFIC RESOURCES	CITY OF SPARKS	1990-JUN-07	1405054	76026		
270	431.0-432.0	009	3.59	SIERRA PACIFIC RESOURCES	CITY OF SPARKS	1990-JUN-07	1405055	76026		
271	431.0-432.0	010	1.07	SIERRA PACIFIC RESOURCES	CITY OF SPARKS	1990-OCT-05	1432689	76026		
272	434.0-434a	009	0.68	BOOHER, M.R. & B.	CITY OF SPARKS	1989-FEB-03	1303199	61752		78019
273	434.0-434a	012	0.98	BOOHER, M.R. & B.	CITY OF SPARKS	1989-APR-05	1315327	61752		78019
274	434.0-434a	013	0.68	PARENT, JR., HARRY J.	CITY OF SPARKS	1989-NOV-21	1363971	61752		78019
275	434.0-434a	014	0.34	PARENT, JR., HARRY J.	CITY OF SPARKS	1989-NOV-21	1363971	61752		
276	434.0-434a	015	0.08	PARENT, JR., HARRY J.	CITY OF SPARKS	1990-JUL-13	1413229	61752		
277	434.0-434a	018	11.30	SIERRA PACIFIC RESOURCES	CITY OF SPARKS	1994-SEP-08	1831554	61752		78019
278	454.0-455.0	027	1.33	MCMILLAN, D.R.H.	CITY OF SPARKS	1985-JUL-25	1011450	55782	17107	
279	454.0-455.0	028	1.29	MCMILLAN, D.R.H.	CITY OF SPARKS	1985-OCT-24	1030334	55782	17107	
280	454.0-455.0	029	0.72	MCMILLAN, D.R.H.	CITY OF SPARKS	1985-DEC-04	1037932	55782	17107	
281	454.0-455.0	031	4.47	HILL, RICHARD GORDON	CITY OF SPARKS	1986-OCT-28	1111893	55782	17107	
282	454.0-455.0	037	5.48	TRAVELIER MOBILE HOME PARK ASSOC.	CITY OF SPARKS	1988-AUG-01	1263446	55782	17107	
283	454.0-455.0	047	2.30	HILL, RICHARD GORDON	CITY OF SPARKS	1989-JUN-14	1330762	55782	17107	
284	454.0-455.0	059	0.33	EBENS, A.J. & J.L.	CITY OF SPARKS	1997-JUL-22	2119282	80308		
285	456.0	001	1.41	MCPHERSON, D.R.H.	CITY OF SPARKS	1987-JAN-20	1133638	61752		78019
286	456.0	003	0.52	MCPHERSON, D.R.H.	CITY OF SPARKS	1988-AUG-29	1269962	61752		78019
287	456.0	010	1.19	MCPHERSON, D.R.H.	CITY OF SPARKS	1989-NOV-21	1363978	61752		78019
288	457.0	002	0.52	SIERRA PACIFIC RESOURCES	CITY OF SPARKS	1995-JUN-22	1902797	78488		

EXHIBIT A
Surface Water Rights - City of Sparks

	Orr Claim No.	Deed No.	AF	GRANTOR	GRANTEE	Recording Deed Date	Recording No.	Application/ Permit No.	Cert. No.	TROA Application No.
289	459.0	003	27.74	SPARKS NUGGET, INC.	CITY OF SPARKS	1997-FEB-06	2070795	58186		78015
290	463.0	005	6.05	MCKENZIE, ET AL	CITY OF SPARKS	1987-JAN-20	1133636	61752		78019
291	463.0	008	1.69	MCKENZIE, ET AL	CITY OF SPARKS	1989-OCT-17	1356242	61752		78019
292	466.0	001	1.26	CAPURRO, ET AL	CITY OF SPARKS	1985-DEC-04	1037931	78488		
293	469.0	006	5.37	WASHOE COUNTY SCHOOL DISTRICT	CITY OF SPARKS	1991-JUN-20	1488475	61752		78019
294	472.0	012	3.50	RIBEIRO, JR., J.A. & RIBEIRO, L.L.	CITY OF SPARKS	1993-JUL-16	1692926	74266		
295	474.0-475.0	012	3.31	HAILEY, LOIS B.	CITY OF SPARKS	1985-DEC-04	1037928	57063	17774	
296	474.0-475.0	023	0.47	BROOKS, N.	CITY OF SPARKS	1987-JAN-20	1133630	57063	17774	
297	474.0-475.0	029	1.28	BROOKS, N.	CITY OF SPARKS	1988-JAN-04	1216877	57063	17774	
298	474.0-475.0	030	6.09	SANFORD, M.	CITY OF SPARKS	1988-JAN-15	1219633	57063	17774	
299	474.0-475.0	031	2.00	BROOKS, N.	CITY OF SPARKS	1988-JAN-04	1216875	57063	17774	
300	474.0-475.0	036	4.46	BROOKS, N.	CITY OF SPARKS	1988-JAN-04	1216876	57063	17774	
301	474.0-475.0	039	3.00	BROOKS, B.	CITY OF SPARKS	1988-JAN-15	1219632	57063	17774	
302	474.0-475.0	042	1.79	MARSH, L.	CITY OF SPARKS	1988-APR-22	1240932	57063	17774	
303	474.0-475.0	059	1.31	SIERRA PACIFIC RESOURCES	CITY OF SPARKS	1990-JUL-13	1413236	57063	17774	
304	474.0-475.0	066	3.25	SIERRA PACIFIC RESOURCES	CITY OF SPARKS	1990-AUG-17	1421240	57063	17774	
305	474.0-475.0	068	1.13	SIERRA PACIFIC RESOURCES	CITY OF SPARKS	1990-AUG-17	1421241	57063	17774	
306	474.0-475.0	072	1.29	SIERRA PACIFIC RESOURCES	CITY OF SPARKS	1990-AUG-17	1421237	57063	17774	
307	474.0-475.0	079-01	4.78	SIERRA PACIFIC POWER COMPANY	CITY OF SPARKS	1994-SEP-08	1831553	74447		
308	474.0-475.0	079-01	0.29	SIERRA PACIFIC POWER COMPANY	CITY OF SPARKS	1994-SEP-08	1831546	74447		
309	474.0-475.0	079-01	1.59	SIERRA PACIFIC POWER COMPANY	CITY OF SPARKS	1994-SEP-08	1831545	74447		
310	474.0-475.0	081	13.16	SIERRA PACIFIC RESOURCES	CITY OF SPARKS	1995-JAN-11	1862901	57062		
311	474.0-475.0	082	7.92	RAFFANELLI, G. & J.	CITY OF SPARKS	1996-APR-19	2050708	74447		
312	477.0-479.0	008	5.98	LUND, ET AL	CITY OF SPARKS	1987-JUN-2	1167291	56872		
313	477.0-479.0	009	3.45	BARKER, D.E.	CITY OF SPARKS	1987-JAN-20	1133634	56872		
314	477.0-479.0	016	1.84	OTTEN, D.M.	CITY OF SPARKS	1988-APR-22	1240934	56872		
315	477.0-479.0	017	26.75	ROCK STREET PARTNERSHIP	CITY OF SPARKS	1988-APR-22	1240911	56872		
316	477.0-479.0	018	0.80	OTTEN, D.M.	CITY OF SPARKS	1988-AUG-01	1263447	56872		
317	477.0-479.0	019	1.14	G & M PROPERTIES, ET AL	CITY OF SPARKS	1988-AUG-29	1269958	56872		
318	477.0-479.0	020	1.00	JUNIPER HEIGHTS	CITY OF SPARKS	1988-AUG-29	1269960	56872		
319	477.0-479.0	021	2.42	G & M PROPERTIES, ET AL	CITY OF SPARKS	1988-SEP-26	1276231	56872		
320	477.0-479.0	022	10.34	LITUANIA, ET AL	CITY OF SPARKS	1988-SEP-26	1276221	56872		
321	477.0-479.0	023	1.00	OTTEN, D.M.	CITY OF SPARKS	1988-SEP-26	1276225	56872		
322	477.0-479.0	024	4.84	LITUANIA, ET AL	CITY OF SPARKS	1988-NOV-01	1284611	56872		
323	477.0-479.0	025	7.21	LITUANIA, ET AL	CITY OF SPARKS	1988-NOV-16	1287461	56872		
324	477.0-479.0	028	26.00	MERCHANT STREET PARTNERSHIP	CITY OF SPARKS	1986-SEP-17	1101147	56872		
325	477.0-479.0	028	7.10	MERCHANT STREET PARTNERSHIP	CITY OF SPARKS	1986-SEP-17	1101146	56872		
326	477.0-479.0	035	2.72	LITUANIA, ET AL	CITY OF SPARKS	1989-APR-05	1315329	56872		
327	477.0-479.0	036	9.25	G & M PROPERTIES, ET AL	CITY OF SPARKS	1989-APR-05	1315336	56872		
328	477.0-479.0	038	20.00	UNISPEC NEVADA CARE CORPORATION	CITY OF SPARKS	1988-SEP-26	1276222	56872		
329	477.0-479.0	051	5.94	G & M PROPERTIES, ET AL	CITY OF SPARKS	1989-JUN-14	1330765	56872		
330	477.0-479.0	052	0.60	G & M PROPERTIES, ET AL	CITY OF SPARKS	1989-JUN-14	1330765	56872		
331	477.0-479.0	055	0.92	SIERRA PACIFIC RESOURCES	CITY OF SPARKS	1989-JUN-12	1335669	76026		
332	477.0-479.0	058	2.09	SIERRA PACIFIC RESOURCES	CITY OF SPARKS	1989-OCT-19	1356813	76026		
333	477.0-479.0	061	2.81	SIERRA PACIFIC RESOURCES	CITY OF SPARKS	1989-NOV-21	1363969	76026		
334	477.0-479.0	062	9.95	SIERRA PACIFIC RESOURCES	CITY OF SPARKS	1989-NOV-21	1363974	76026		
335	477.0-479.0	063	8.09	SIERRA PACIFIC RESOURCES	CITY OF SPARKS	1989-NOV-21	1363973	76026		
336	477.0-479.0	064	1.88	SIERRA PACIFIC POWER COMPANY	CITY OF SPARKS	1989-NOV-21	1363972	56872		

EXHIBIT A
Surface Water Rights - City of Sparks

	Orr Claim No.	Deed No.	AF	GRANTOR	GRANTEE	Recording Deed Date	Recording No.	Application/ Permit No.	Cert. No.	TROA Application No.
337	477.0-479.0	065	3.32	SIERRA PACIFIC RESOURCES	CITY OF SPARKS	1989-NOV-21	1363979	76026		
338	477.0-479.0	065	1.48	SIERRA PACIFIC RESOURCES	CITY OF SPARKS	1989-NOV-21	1363977	76026		
339	477.0-479.0	066	1.46	SIERRA PACIFIC RESOURCES	CITY OF SPARKS	1989-NOV-21	1363975	76026		
340	477.0-479.0	067	1.91	SIERRA PACIFIC RESOURCES	CITY OF SPARKS	1989-NOV-21	1363976	76026		
341	477.0-479.0	072	0.64	SIERRA PACIFIC RESOURCES	CITY OF SPARKS	1989-OCT-19	1356817	76026		
342	477.0-479.0	080	5.61	SIERRA PACIFIC RESOURCES	CITY OF SPARKS	1990-FEB-05	1378895	76026		
343	477.0-479.0	081	2.60	SIERRA PACIFIC RESOURCES	CITY OF SPARKS	1990-FEB-05	1378894	76026		
344	477.0-479.0	082	2.90	SIERRA PACIFIC RESOURCES	CITY OF SPARKS	1990-FEB-05	1378893	76026		
345	477.0-479.0	091	1.27	BARKER, D.E.	CITY OF SPARKS	1986-OCT-28	1111892	56872		
346	477.0-479.0	093	6.26	G & M PROPERTIES, ET AL	CITY OF SPARKS	1986-OCT-28	1111890	56872		
347	477.0-479.0	094	1.09	G & M PROPERTIES, ET AL	CITY OF SPARKS	1986-MAY-21	1072931	56872		
348	477.0-479.0	120	23.54	LITUANIA, ET AL	CITY OF SPARKS	1994-JUN-01	1803095	76684		
349	477.0-479.0	124-02	23.03	WASHOE COUNTY	CITY OF SPARKS	1995-FEB-17	1872293	64772	16578	
350	477.0-479.0	125	14.04	JUNIPER HEIGHTS	CITY OF SPARKS	1996-JUL-19	2013926	79856		
351	477.0-479.0	126	4.03	COLEMAN DEVELOPMENT, INC.	CITY OF SPARKS	1996-NOV-15	2047922	76026		
352	484.0	005	65.90	SIERRA PACIFIC RESOURCES	CITY OF SPARKS	1994-SEP-08	1831544	76497		78028
353	484.0	007	19.58	DI LORETO CONST. & DEV., INC.	CITY OF SPARKS	1993-JUL-13	1691437	65186		
354	484.0	008	46.19	SIERRA PACIFIC RESOURCES	CITY OF SPARKS	1994-NOV-23	1851804	76497		78028
355	484.0	009-01	0.41	SIERRA PACIFIC RESOURCES	CITY OF SPARKS	1996-APR-18	1986857	76497		78028
356	484.0	009-01	0.71	SIERRA PACIFIC RESOURCES	CITY OF SPARKS	1996-APR-03	1982647	76497		78028
357	484.0	009-01	1.11	SIERRA PACIFIC RESOURCES	CITY OF SPARKS	1996-APR-18	1986860	76497		78028
358	484.0	009-01	1.11	SIERRA PACIFIC RESOURCES	CITY OF SPARKS	1996-APR-03	1982643	76497		78028
359	484.0	009-01	0.33	SIERRA PACIFIC RESOURCES	CITY OF SPARKS	1996-APR-03	1982644	76497		78028
360	484.0	009-01	1.75	SIERRA PACIFIC RESOURCES	CITY OF SPARKS	1996-APR-03	1982645	76497		78028
361	484.0	009-01	0.57	SIERRA PACIFIC RESOURCES	CITY OF SPARKS	1995-JUL-28	1911875	76497		78028
362	484.0	009-01	4.09	SIERRA PACIFIC RESOURCES	CITY OF SPARKS	1996-APR-18	1986855	76497		78028
363	484.0	009-01	0.66	SIERRA PACIFIC RESOURCES	CITY OF SPARKS	1996-MAR-11	1975364	76497		78028
364	484.0	009-01	1.00	SIERRA PACIFIC RESOURCES	CITY OF SPARKS	1996-MAY-08	1992821	76497		78028
365	484.0	009-01	0.79	SIERRA PACIFIC RESOURCES	CITY OF SPARKS	1997-JUL-22	2119284	76497		78028
366	484.0	009-01	2.01	SIERRA PACIFIC RESOURCES	CITY OF SPARKS	1995-JAN-27	1867239	76497		78028
367	484.0	013-02	7.30	SIERRA PACIFIC POWER COMPANY	CITY OF SPARKS	1996-NOV-22	2050714	62885		
368	484.0	013-02	0.64	SIERRA PACIFIC POWER COMPANY	CITY OF SPARKS	1997-FEB-06	2070797	62885		
369	484.0	013-02	0.64	SIERRA PACIFIC POWER COMPANY	CITY OF SPARKS	1997-AUG-08	2124334	62885		
370	484.0	013-02	0.31	SIERRA PACIFIC POWER COMPANY	CITY OF SPARKS	1997-FEB-06	2070796	62885		
371	484.0	013-02	1.72	SIERRA PACIFIC POWER COMPANY	CITY OF SPARKS	1997-FEB-06	2070798	62885		
372	485.0/489.0	003	2.00	DERMODY PROPERTIES	CITY OF SPARKS	1986-MAY-21	1072927	76497		78028
373	485.0/489.0	005	5.97	DERMODY PROPERTIES	CITY OF SPARKS	1985-SEP-09	1020614	76497		78028
374	485.0/489.0	007	50.28	SIERRA PACIFIC RESOURCES	CITY OF SPARKS	1994-MAR-04	1772331	76497		78028
375	485.0/489.0	011	12.50	SIERRA PACIFIC RESOURCES	CITY OF SPARKS	1995-MAR-02	1875343	76497		78028
376	516.0	001	3.60	SIERRA WEST PROFESSIONAL COMPLEX	CITY OF SPARKS	1985-JUN-07	1001990	78654		
377	516.0	001-01	2.84	SIERRA WEST PROFESSIONAL COMPLEX	CITY OF SPARKS	1985-JUN-07	1001990	79879		
378	520.0	004	0.52	GARIBALDI, DOUGLASS	CITY OF SPARKS	1991-APR-17	1472813	77415		
379	521.0	002	1.90	SMITH, BRUCE W. & MARY JANE	CITY OF SPARKS	1986-MAY-21	1072936	77415		
380	521.0	002	0.51	BUS, INC.	CITY OF SPARKS	1992-JUL-02	1585333	77415		
381	524.0	009	10.38	DERMODY, J.A. & MCKENZIE, E.W.	CITY OF SPARKS	1986-JAN-22	1047599	56060	15652	
382	524.0	011	35.66	BIGHORN DEVELOPMENT II, LTD.	CITY OF SPARKS	1996-JUL-30	2016456	60350	15291	
383	528.0	001	31.50	DENEVI, W. & DENEVI, M. A.	CITY OF SPARKS	1979-JUN-13	610996	73975		
384	529.0	003	3.36	LOEB ENTERPRISES, LLC.	CITY OF SPARKS	1996-NOV-15	2047923	62079	17277	

EXHIBIT A
Surface Water Rights - City of Sparks

	Orr Claim No.	Deed No.	AF	GRANTOR	GRANTEE	Recording Deed Date	Recording No.	Application/ Permit No.	Cert. No.	TROA Application No.
385	529.0	004	14.30	LOEB ENTERPRISES, LLC.	CITY OF SPARKS	1996-JUN-26	2007763	62079	17277	
386	529.0	005	8.85	DEMSEY CONTSTRUCTION OF NEVADA, LLC	CITY OF SPARKS	1997-FEB-11	2071821	62079	17277	
387	530.0	001	0.52	MCCLOSKEY, M.	CITY OF SPARKS	1985-OCT-24	1030335	59390		78016
388	530.0	002	0.70	BARKER HOMES, INC.	CITY OF SPARKS	1997-AUG-08	2124328	77307		
389	536.0	001	1.50	ROSS FAMILY TRUST	CITY OF SPARKS	1986-MAY-21	1072934	59390		78016
390	536.0	003	1.74	ROSS FAMILY TRUST	CITY OF SPARKS	1992-NOV-23	1624757	59390		78016
391	537.0	001	0.65	NEVADA BELL	CITY OF SPARKS	1989-NOV-21	1363980	59390		78016
392	538.0	002	0.57	JOINER, B.M.	CITY OF SPARKS	1985-APR-02	988218	59390		78016
393	538.0	003	1.08	CECCARELLI, ET AL.	CITY OF SPARKS	1985-MAR-28	987126	59390		78016
394	538.0	004	1.03	CECCARELLI, J. & E.	CITY OF SPARKS	1985-MAR-28	987127	59390		78016
395	539.0	003	0.98	FRANO, ET AL.	CITY OF SPARKS	1986-JUN-24	1080235	59390		78016
396	539.0	004	0.43	ALLARD, E.M.	CITY OF SPARKS	1986-JUN-24	1080236	59390		78016
397	540.0	003	0.67	KLIMAN, G.	CITY OF SPARKS	1986-JUN-24	1080233	59390		78016
398	540.0	005	0.82	YOUNG, J.L.	CITY OF SPARKS	1985-APR-2	988222	59390		78016
399	541.0	002	0.78	CLONINGER, R.L. & S.	CITY OF SPARKS	1985-APR-2	988216	59390		78016
400	541.0	003	0.96	DAUGHERTY, T. & R.H.	CITY OF SPARKS	1985-MAR-28	987125	59390		78016
401	542.0	001	1.15	LIPERA, F.C.	CITY OF SPARKS	1985-APR-2	988219	59390		78016
402	542.0	002	1.25	PEDRO, S.M.	CITY OF SPARKS	1985-APR-2	988220	59390		78016
403	543.0	001	1.00	HUMPHREYS, C.W. & B.	CITY OF SPARKS	1985-APR-2	988217	59390		78016
404	543.0	002	1.35	WARD, L.J. & K.H.	CITY OF SPARKS	1985-APR-2	988215	59390		78016
405	543.0	003	1.25	THOMPSON, A.S. & K.H.	CITY OF SPARKS	1985-APR-2	988221	59390		78016
406	548.0	001	0.77	BITZ, S.T. & D.L.	CITY OF SPARKS	1987-JUN-2	1167297	59390		78016
407	548.0	005	0.11	SHONBERGER, ET AL	CITY OF SPARKS	1993-FEB-03	1643641	59390		78016
408	548.0	006	2.21	ROSS FAMILY TRUST	CITY OF SPARKS	1992-NOV-23	1624757	59390		78016
409	548.0	007	0.84	BITZ, S.T. & D.L.	CITY OF SPARKS	1993-SEP-20	1713803	77307		
410	549.0	001	0.87	BOOHER, M.R. & B.	CITY OF SPARKS	1987-APR-27	1157942	59390		78016
411	550.0	001	1.27	FRANO, J.E. & M.E.	CITY OF SPARKS	1986-JUN-24	1080235	59390		78016
412	550.0	002	0.71	RASICO, J.W. & B.R.	CITY OF SPARKS	1989-JUL-07	1335671	59390		78016
413	551.0	001	1.04	BOOHER, M.R. & B.	CITY OF SPARKS	1987-APR-27	1157944	59390		78016
414	551.0	003	0.16	BOOHER, M.R. & B.	CITY OF SPARKS	1988-APR-22	1240913	59390		78016
415	551.0	004	0.81	BARKER HOMES, INC.	CITY OF SPARKS	1997-AUG-8	2124328	66483		
416	552.0	001	0.84	BOOHER, M.R. & B.	CITY OF SPARKS	1988-APR-22	1240917	59390		78016
417	553.0	001	0.79	EVANS, S	CITY OF SPARKS	1986-JUN-24	1080231	59390		78016
418	553.0	002	0.83	SWAYNE, A. & SWAYNE, W.R.	CITY OF SPARKS	1986-JUN-24	1080232	59390		78016
419	553.0	003	0.76	SIERRA PACIFIC RESOURCES	CITY OF SPARKS	1989-AUG-01	1340632	77307		
420	553.0	004	1.08	BARKER HOMES, INC.	CITY OF SPARKS	1997-AUG-08	2124328	77307		
421	558.0	001	1.04	JOINER, B.M.	CITY OF SPARKS	1985-APR-02	988218	59390		78016
422	559.0	002	0.90	SIERRA PACIFIC RESOURCES	CITY OF SPARKS	1995-JUN-22	1902792	66483		
423	561.0	001	0.89	BOOHER, M.R. & B.	CITY OF SPARKS	1989-FEB-03	1303199	59390		78016
424	565.0	001	1.89	LAFFINS, R. & C.	CITY OF SPARKS	1991-AUG-30	1505072	59390		78016
425	566.0	004	0.72	BITZ, S.T. & D.L.	CITY OF SPARKS	1998-JAN-09	2169118	66483		
426	568.0-568a	017	3.57	SIERRA PACIFIC RESOURCES	CITY OF SPARKS	1995-MAR-02	1875343	79943		
427	568.0-568a	017-01	3.65	SIERRA PACIFIC RESOURCES	CITY OF SPARKS	1995-MAR-02	1875343	0		
428	569.0	007	1.76	LAYTON, HYRUM J. & HOLLIS	CITY OF SPARKS	1992-SEP-10	1604305	0		
429	573.0-573a	001	41.55	LEWIS BUILDING CO.	CITY OF SPARKS	1986-AUG-06	1090809	56061	15050	
430	573.0-573a	004	2.05	LEWIS HOMES OF NEVADA	CITY OF SPARKS	1992-OCT-01	1610503	59390		78016
431	573.0-573a	005	34.85	LEWIS HOMES OF NEVADA	CITY OF SPARKS	1993-AUG-18	1703447	59390		78016
432	573.0-573a	006	33.61	LEWIS HOMES OF NEVADA	CITY OF SPARKS	1993-JUL-16	1692930	59390		78016

EXHIBIT A
Surface Water Rights - City of Sparks

	Orr Claim No.	Deed No.	AF	GRANTOR	GRANTEE	Recording Deed Date	Recording No.	Application/Permit No.	Cert. No.	TROA Application No.
433	573.0-573a	007	27.98	LEWIS HOMES OF NEVADA	CITY OF SPARKS	1993-OCT-12	1721373	77201		
434	573.0-573a	008	48.95	LEWIS HOMES OF NEVADA	CITY OF SPARKS	1994-MAR-04	1772333	77201		
435	573.0-573a	009	6.51	MIYAGAWA, K-K	CITY OF SPARKS	1996-APR-18	1986858	77201		
436	574.0-575.0	004	0.90	SIERRA PACIFIC RESOURCES	CITY OF SPARKS	1991-APR-17	1472815	57195		78012
437	574.0-575.0	005	0.68	SIERRA PACIFIC RESOURCES	CITY OF SPARKS	1991-APR-17	1472812	57195		78012
438	574.0-575.0	009	3.29	SIERRA PACIFIC RESOURCES	CITY OF SPARKS	1991-JUN-20	1488478	57195		78012
439	574.0-575.0	010	3.88	SIERRA PACIFIC RESOURCES	CITY OF SPARKS	1991-JUN-20	1488477	57195		78012
440	574.0-575.0	011	1.09	SIERRA PACIFIC RESOURCES	CITY OF SPARKS	1991-JUN-20	1488476	57195		78012
441	574.0-575.0	016	0.53	SIERRA PACIFIC RESOURCES	CITY OF SPARKS	1991-AUG-30	1505074	57195		78012
442	574.0-575.0	021	20.28	STATE OF NEVADA	CITY OF SPARKS	1995-JAN-27	1867236	79213		
443	574.0-575.0	022	8.50	SIERRA PACIFIC RESOURCES	CITY OF SPARKS	1995-MAR-02	1875343	79213		
444	574.0-575.0	023	5.07	STATE OF NEVADA	CITY OF SPARKS	1995-FEB-17	1872291	79213		
445	574.0-575.0	026	2.59	SIERRA PACIFIC RESOURCES	CITY OF SPARKS	1995-JUN-22	1902792	79213		
446	574.0-575.0	030	4.03	SIERRA PACIFIC RESOURCES	CITY OF SPARKS	1996-APR-18	1986850	79213		
447	574.0-575.0	031	126.00	SIERRA PACIFIC POWER COMPANY	CITY OF SPARKS	1996-MAR-11	1975363	61787		78020
448	574.0-575.0	033	26.42	BAILEY & MCGAH	CITY OF SPARKS	1996-JUN-27	2007761	54999		78010
449	576.0	001	4.00	H.S. CROCKER COMPANY, INC.	CITY OF SPARKS	1987-JUN-02	1167296	59390		78016
450	576.0	002	57.33	BEAZER HOMES NEVADA, INC.	CITY OF SPARKS	1996-FEB-21	1969708	78847		
451	576.0	003-02	0.47	SIERRA PACIFIC POWER COMPANY	CITY OF SPARKS	1996-JUN-27	2007762	62534		74197
452	576.0	003-02	0.78	SIERRA PACIFIC POWER COMPANY	CITY OF SPARKS	1996-JUL-19	2013930	62534		74197
453	576.0	003-02	0.78	SIERRA PACIFIC POWER COMPANY	CITY OF SPARKS	1996-JUL-19	2013931	62534		74197
454	576.0	003-02	8.66	SIERRA PACIFIC POWER COMPANY	CITY OF SPARKS	1996-SEP-11	2029150	62534		74197
455	576.0	003-02	7.81	SIERRA PACIFIC POWER COMPANY	CITY OF SPARKS	1996-SEP-11	2029153	62534		74197
456	576.0	003-02	0.31	SIERRA PACIFIC POWER COMPANY	CITY OF SPARKS	1996-NOV-22	2050709	62534		74197
457	576.0	003-02	0.30	SIERRA PACIFIC POWER COMPANY	CITY OF SPARKS	1996-NOV-22	2050710	62534		74197
458	576.0	003-02	5.69	SIERRA PACIFIC POWER COMPANY	CITY OF SPARKS	1996-NOV-22	2050711	62534		74197
459	576.0	003-02	1.76	SIERRA PACIFIC POWER COMPANY	CITY OF SPARKS	1996-NOV-22	2050712	62534		74197
460	576.0	003-02	30.70	SIERRA PACIFIC POWER COMPANY	CITY OF SPARKS	1997-FEB-06	2070794	62534		74197
461	576.0	003-02	0.12	SIERRA PACIFIC POWER COMPANY	CITY OF SPARKS	1997-FEB-06	2070797	62534		74197
462	576.0	003-02	3.16	SIERRA PACIFIC POWER COMPANY	CITY OF SPARKS	1997-JUL-22	2119283	62534		74197
463	576.0	004	60.00	LOEB ENTERPRISES LIABILITY CO.	CITY OF SPARKS	1996-JUN-27	2007764	62051		
464	576.0	005	57.29	LOEB ENTERPRISES LIABILITY CO.	CITY OF SPARKS	1996-JUL-19	2013928	62051		
465	576.0	008	25.42	NEUFFER HOMES & DEVELOPMENT	CITY OF SPARKS	1996-AUG-09	2019971	62201	16574	
466	576.0	010	20.54	COLEMAN DEVELOPMENT, INC.	CITY OF SPARKS	1997-OCT-14	2144454	63034	17234	
467	576.0	011	11.83	WILD ISLAND, INC.	CITY OF SPARKS	1998-MAR-26	2192624	78847		
468	579.0-580.0	004	15.68	SIERRA PACIFIC RESOURCES	CITY OF SPARKS	1990-OCT-05	1432691	57195		78012
469	579.0-580.0	018	1.47	SIERRA PACIFIC RESOURCES	CITY OF SPARKS	1991-APR-17	1472814	57195		78012
470	579.0-580.0	019	0.58	SIERRA PACIFIC RESOURCES	CITY OF SPARKS	1991-APR-17	1472810	57195		78012
471	581.0	001	26.00	BAILEY & MCGAH	CITY OF SPARKS	1985-APR-17	991083	59390		78016
472	581.0	003	42.36	BAILEY & MCGAH	CITY OF SPARKS	1990-AUG-29	1423724	59390		78016
473	581.0	004	46.36	BAILEY & MCGAH	CITY OF SPARKS	1992-MAR-25	1556954	59390		78016
474	581.0	005	34.10	BAILEY & MCGAH	CITY OF SPARKS	1992-OCT-14	1613589	59390		78016
475	581.0	006	17.72	BAILEY & MCGAH	CITY OF SPARKS	1993-JUN-11	1682235	59390		78016
476	581.0	007	16.88	BAILEY & MCGAH	CITY OF SPARKS	1993-JUL-28	1696381	59390		78016
477	581.0	008	16.67	BAILEY & MCGAH	CITY OF SPARKS	1993-NOV-17	1733394	59390		78016
478	581.0	009	33.09	BAILEY & MCGAH	CITY OF SPARKS	1994-FEB-22	1767380	59390		78016
479	581.0	010	14.35	BAILEY & MCGAH	CITY OF SPARKS	1995-FEB-17	1872292	59390		78016
480	582.0	003	39.58	BEAZER HOMES NEVADA, INC.	CITY OF SPARKS	1996-FEB-21	1969708	78875		

EXHIBIT A
Surface Water Rights - City of Sparks

	Orr Claim No.	Deed No.	AF	GRANTOR	GRANTEE	Recording Deed Date	Recording No.	Application/ Permit No.	Cert. No.	TROA Application No.
481	583.0	007	1.64	CASSINELLI, CHESTER R. & LAURA N.	CITY OF SPARKS	1986-MAY-21	1072926	57309	15053	73870
482	583.0	008	1.59	SIERRA PACIFIC POWER COMPANY	CITY OF SPARKS	1986-JUL-08	1083551	57309	15053	73870
483	583.0	010	1.23	CASSINELLI, CHESTER R. & LAURA N.	CITY OF SPARKS	1988-NOV-01	1284613	57309	15053	73870
484	583.0	012	1.78	CASSINELLI, CHESTER R. & LAURA N.	CITY OF SPARKS	1990-JUN-07	1405051	57309	15053	73870
485	583.0	013	0.41	CASSINELLI, CHESTER R. & LAURA N.	CITY OF SPARKS	1995-JUN-22	1902794	78961		
486	583.0	014	0.50	CASSINELLI, CHESTER R. & LAURA N.	CITY OF SPARKS	1997-JUL-22	2119280	78961		
487	585.0	001	0.78	GOODWILL, R.K. & K.S.	CITY OF SPARKS	1985-OCT-24	1030336	63858		78026
488	585.0	002	10.33	CHOQUETTE, F.E. & F.A.	CITY OF SPARKS	1988-AUG-01	1263440	63858		78026
489	585.0	003	84.53	VALLEY BANK OF NEVADA	CITY OF SPARKS	1988-JUL-15	1259846	63858		78026
490	585.0	004	4.50	WESTERN SUPPLY CORPORATION	CITY OF SPARKS	1990-OCT-05	1432693	63858		78026
491	585.0	005	99.54	GREG PARK ASSOCIATES 1	CITY OF SPARKS	1989-JUN-14	1330759	63858		78026
492	586.0	002	1.54	J.R. & N.L. RIBEIRO 1989 TRUST	CITY OF SPARKS	1990-AUG-17	1421238	63858		78026
493	588.0	002	1.80	WARE, RICHARD E. & JUNE M.	CITY OF SPARKS	1986-JUN-24	1080234	0		
494	588.0	005	0.44	C. NICHOLAS PEREOS 1980 TRUST	CITY OF SPARKS	1987-JAN-20	1133629	63858		78026
495	588.0	007	1.16	BOOHER, M.R. & B.	CITY OF SPARKS	1988-APR-22	1240926	63858		78026
496	588.0	012	4.57	G & M PROPERTIES	CITY OF SPARKS	1990-JUL-13	1413234	63858		78026
497	588.0	013	1.39	G & M PROPERTIES	CITY OF SPARKS	1990-AUG-17	1421239	63858		78026
498	588.0	014	6.32	G & M PROPERTIES	CITY OF SPARKS	1990-JUL-13	1413237	63858		78026
499	588.0	014-01	1.27	G & M PROPERTIES	CITY OF SPARKS	1990-JUL-13	1413237	77692		
500	588.0	017	0.64	JAMES C. & WAVA M. BAKER TRUST	CITY OF SPARKS	1997-SEP-16	2135049	77390		
501	596.0	001	69.86	BIGHORN DEVELOPMENT II, LTD.	CITY OF SPARKS	1996-JUL-19	2013929	60349	15883	
502	596.0	002	37.14	BIGHORN DEVELOPMENT II, LTD.	CITY OF SPARKS	1996-JUL-30	2016456	60349	15883	
503	606.0-606a	006	5.71	PACIFIC FREEPORT WAREHOUSE COMPANY	CITY OF SPARKS	1986-JAN-09	1044817	55846	15049	
504	606.0-606a	010	0.29	PACIFIC FREEPORT WAREHOUSE COMPANY	CITY OF SPARKS	1990-JUN-07	1405053	55846	15049	
505	606.0-606a	012	122.29	BARKER HOMES, INC.	CITY OF SPARKS	1997-MAR-07	2077811	62545		
506	607.0	001	4.00	BARKER HOMES, INC.	CITY OF SPARKS	1997-MAR-07	2077811	62546	16812	
507	609.0	003	2.29	NEWTON, R.E. & G. & SHAVER, D.S. & M.E.	CITY OF SPARKS	1985-OCT-24	1030337	77746		
508	609.0	006	0.60	SIERRA PACIFIC POWER COMPANY	CITY OF SPARKS	1986-MAY-21	1072928	73777		
509	609.0	009	5.17	LOW, L.S., SR. & B. & SIERRA WEST DEV. CORP.	CITY OF SPARKS	1988-JAN-15	1219635	77983		
510	609.0	012	4.16	SIERRA WEST DEVELOPMENT CORP.	CITY OF SPARKS	1989-DEC-14	1368678	77746		
511	609.0	012	4.55	RETIRED PERSONS PHARMACY OF N. NV., INC.	CITY OF SPARKS	1992-SEP-10	1604304	77746		
512	609.0	015	0.88	EDELMAN, L.	CITY OF SPARKS	1991-APR-17	1472811	77983		
513	609.0	018	5.01	NEWTON, R.E. & G. & SHAVER, D.S. & M.E.	CITY OF SPARKS	1998-JUL-20	2232486	77746		
514	613.0	001-02	0.30	SIERRA PACIFIC POWER COMPANY	CITY OF SPARKS	1997-OCT-24	2147992	64667		
515	614.0	003	9.68	NORTHWESTERN MUTUAL LIFE INSURANCE CO	CITY OF SPARKS	1996-SEP-11	2029154	64667		
516	614.0	004	4.42	NORTHWESTERN MUTUAL LIFE INSURANCE CO	CITY OF SPARKS	1997-AUG-08	2124333	64667		
517	617.0	003	1.38	MULHALL, R.D. & L.	CITY OF SPARKS	1987-JUN-02	1167295	64666		
518	617.0	004	1.36	STITSER, C. & C.	CITY OF SPARKS	1988-JAN-15	1219634	64666		
519	617.0	005	3.19	J.A. & B.L. MEICH FAMILY TRUST	CITY OF SPARKS	1989-OCT-17	1356240	64666		
520	618.0	006	3.50	ROBINSON, P.C.	CITY OF SPARKS	1985-OCT-24	1030338	57708	16685	
521	618.0	007	0.97	ROBINSON, P.C.	CITY OF SPARKS	1985-AUG-15	1015969	57708	16685	
522	618.0	014	50.00	LOEB ENTERPRISES L.L.C.	CITY OF SPARKS	1997-JUN-20	2110374	57282		
523	628.0	006	17.58	LANDS OF SIERRA, INC.	CITY OF SPARKS	1995-JUN-22	1902795	55006	16513	
524	628.0	007	12.42	LANDS OF SIERRA, INC.	CITY OF SPARKS	1995-JUN-22	1902793	55006	16513	
525	628.0	016	2.22	LANDS OF SIERRA, INC.	CITY OF SPARKS	1996-MAR-11	1975365	55006	16513	
526	628.0	020	12.78	LANDS OF SIERRA, INC.	CITY OF SPARKS	1996-APR-18	1986854	55006	16513	
527	628.0	024	9.37	LANDS OF SIERRA, INC.	CITY OF SPARKS	1996-APR-18	1986852	55006	16513	
528	628.0	024	8.17	LANDS OF SIERRA, INC.	CITY OF SPARKS	1996-APR-18	1986853	55006	16513	

EXHIBIT A
Surface Water Rights - City of Sparks

	Orr Claim No.	Deed No.	AF	GRANTOR	GRANTEE	Recording Deed Date	Recording No.	Application/ Permit No.	Cert. No.	TROA Application No.
529	628.0	026	7.78	COLEMAN DEVELOPMENT, INC.	CITY OF SPARKS	1996-NOV-15	2047922	55006	16513	
530	628.0	027	50.00	SPINNAKER SPARKS, LLC	CITY OF SPARKS	1997-MAY-02	2095372	62000	15886	
531	634.0	002	83.84	SIERRA PACIFIC POWER COMPANY	CITY OF SPARKS	1986-JUN-24	1080230	55007	16514	73867
532	634.0	003	45.93	1978 PACE TRUST AGREEMENT	CITY OF SPARKS	1986-AUG-06	1090808	55007	16514	73867
533	634.0	004	8.80	SIERRA PACIFIC POWER COMPANY	CITY OF SPARKS	1986-JUN-27	1081242	55007	16514	73867
534	634.0	005	42.23	1978 PACE TRUST AGREEMENT	CITY OF SPARKS	1986-MAY-21	1072938	55007	16514	73867
535	634.0	006	67.34	PACE-TEK, INC.	CITY OF SPARKS	1987-JUN-10	1169505	55007	16514	73867
536	634.0	009	17.75	PACE-TEK, INC.	CITY OF SPARKS	1987-APR-02	1152090	55007	16514	73867
537	634.0	010	8.11	BOOHER, M.R. & B.	CITY OF SPARKS	1988-APR-22	1240916	55007	16514	73867
538	634.0	011	0.31	SIERRA VISTA PROPERTIES, INC.	CITY OF SPARKS	1992-NOV-23	1624755	55008		
539	635.0	004	1.94	R. & R. TEGLIA FAMILY TRUST AGREEMENT	CITY OF SPARKS	1990-FEB-05	1378896	55007	16514	73867
540	635.0	006	0.96	SIERRA VISTA PROPERTIES, INC.	CITY OF SPARKS	1992-NOV-23	1624755	55008		
541	635.0	007	6.32	BAILEY & MCGAH	CITY OF SPARKS	1995-FEB-17	1872292	55008		
542	637.0	001	3.16	SIERRA VISTA PROPERTIES, INC.	CITY OF SPARKS	1992-NOV-23	1624755	55009		
543	638.0	004	40.41	ARDEN, R.W. & R.M. & HANNIFIN, P. & D.B.	CITY OF SPARKS	1997-MAR-17	2080282	53093		
544	642.0	002-007	300.00	DIVERSIFIED DEV. & CONST.	CITY OF SPARKS	1990-FEB-28	1383348	53092	14611	
545	676.0-679.0	001	0.81	CUTLER, F.A., JR. & H.G.	CITY OF SPARKS	1988-JAN-04	1216874			
546	687-688a	003	1.52	BUEHLER, M.C. & G.J.	CITY OF SPARKS	1985-JUL-25	1011449			
			6,073.83							

EXHIBIT B

The following describes a portion of the area shown on Nevada Division of Water Resources TR Map No. 046-3 and 090 situated in Sections 7 and 14, Township 19 North, Range 20 East, and TR Map No. 049 situated in Section 34, Township 20 North, Range 20 East, Mount Diablo Meridian, in Sparks, Nevada, and being more particularly described as follows:

A PORTION OF PERMIT NO. 73794:

COMMENCING at the Northeast corner of said Section 34, as shown on said TR Map No. 049;

THENCE, South 88°29'56" West, a distance of 1371.15 feet to the **POINT OF BEGINNING**;

THENCE, South 00°01'18" East, a distance of 44.53 feet;

THENCE, South 89°58'42" West, a distance of 1159.69 feet;

THENCE, North 18°20'05" West, a distance of 46.90 feet to a point on the southerly right-of-way of Shadow Lane;

THENCE, North 89°58'42" East, a distance of 1174.43 feet along said southerly right-of-way to the **POINT OF BEGINNING**.

Containing 1.193 acres of land, more or less, as shown on Permit No. 73794, Nevada Division of Water Resources.

BASIS OF BEARING:

Identical to that of Document No. 835211, recorded on January 25, 1983, Official Records of Washoe County, Nevada.

A PORTION OF PERMIT NO. 76024:

COMMENCING at the Northeast corner of said Section 7, as shown on said TR Map No. 090;

THENCE, South 04°20'44" West, a distance of 556.64 feet to the **POINT OF BEGINNING**;

THENCE, North 81°28'30" West, a distance of 375.21 feet;

THENCE, North 08°31'25" East, a distance of 23.12 feet to a point on the southerly right-of-way of the Southern Pacific Railroad;

THENCE, North 82°17'30" West, a distance of 424.80 feet along said southerly right-of-way;

THENCE, South 03°42'47" East, a distance of 113.37 feet;

THENCE, South 82°17'30" East, a distance of 788.30 feet to a point on the westerly right-of-way of 21st Street;

THENCE, North 00°03'30" East, a distance of 83.40 feet along said westerly right-of-way to the **POINT OF BEGINNING**.

Containing 1.80 acres of land, more or less, as shown on Permit No. 76024, Nevada Division of Water Resources.

BASIS OF BEARING:

Identical to that of Document No. 1288995 recorded on November 23, 1988, Official Records of Washoe County, Nevada.

A PORTION OF PERMIT NO. 80267:

COMMENCING at the Northwest corner of said Section 14, as shown on said TR Map No. 046-3;

THENCE, South 57°51'08" East, a distance of 1572.51 feet to the **POINT OF BEGINNING**;

THENCE, South 89°44'05" East, a distance of 1333.59 feet;

THENCE, South 00°57'23" West, a distance of 25.32 feet;

THENCE, North 89°44'05" West, a distance of 1333.43 feet;

THENCE, North 00°34'50" East, a distance of 25.32 feet to the **POINT OF BEGINNING**.

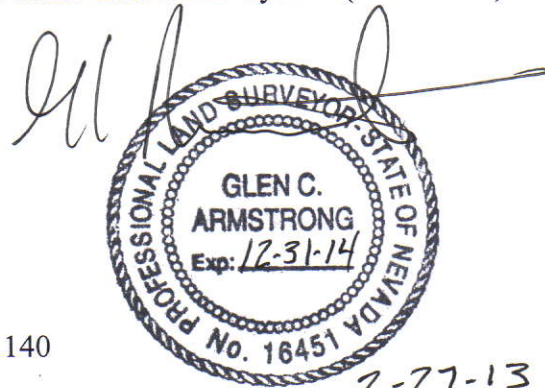
Containing 0.775 acres of land, more or less, as shown on Permit No. 80267, Nevada Division of Water Resources.

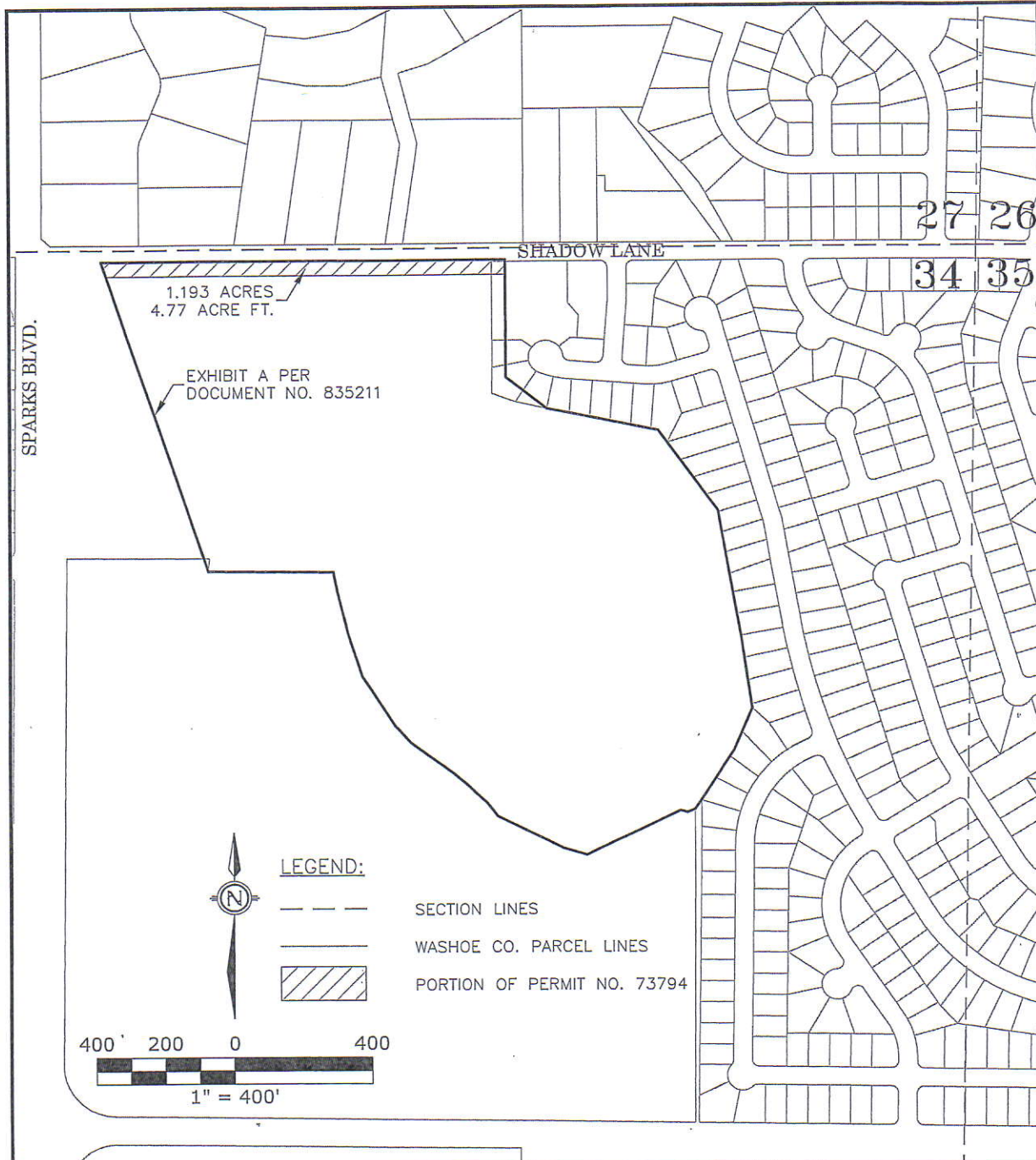
BASIS OF BEARING:

North is based on the Nevada State Plane Coordinate System (West Zone, NAD83).

Prepared by:

Glen C. Armstrong, PLS
Nevada Certificate No. 16451
State Water Rights Surveyor No. 1140
US Geomatics
227 Vine Street, PO Box 3299
Reno, Nevada 89505





US GEOMATICS
 P.O. Box 3299
 Reno, NV 89505
 p. 775.786.5111
 f. 775.786.5114
 www.usgeomatics.com

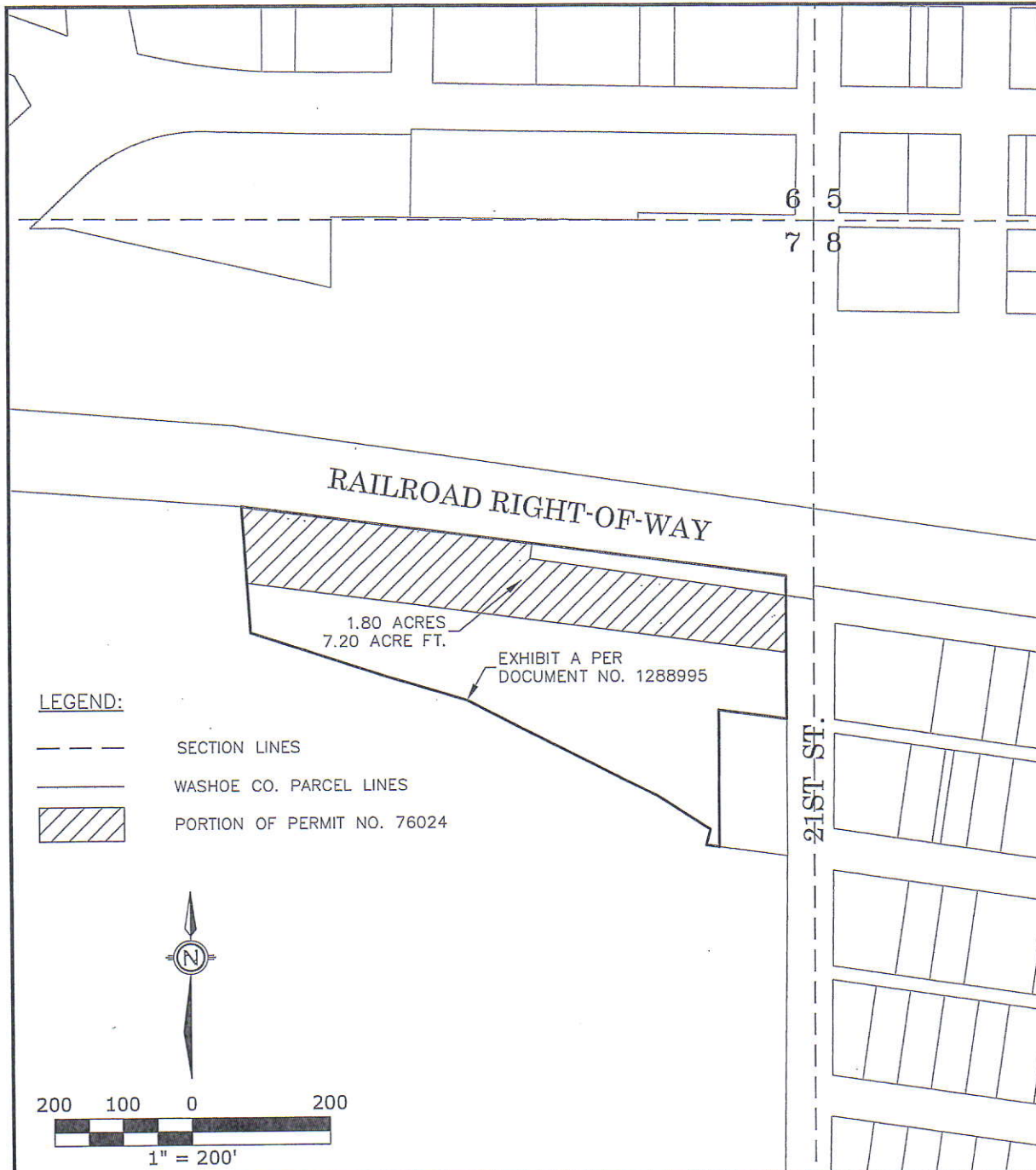
TRUCKEE MEADOWS WATER AUTHORITY
 CITY OF SPARKS WATER RIGHTS

**A PORTION OF THE NE 1/4
 OF SECTION 34, T.20N., R.20E., M.D.M.**




SPARKS NEVADA

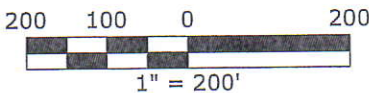
Project No: 100-01-12
 Date: 2012/12/02
 Drawn by: CRS
 Designed by: _____
 Checked by: _____
 Horiz. scale: 1" = 400'
 Vertical scale: _____
 Projection: _____
 Horiz. datum: NAD83
 Vertical datum: _____

SHEET
 1
 of
 1



LEGEND:

-  SECTION LINES
-  WASHOE CO. PARCEL LINES
-  PORTION OF PERMIT NO. 76024



P.O. Box 3299
 Reno, NV 89505
 p. 775.786.5111
 f. 775.786.5114
 www.usgeomatics.com

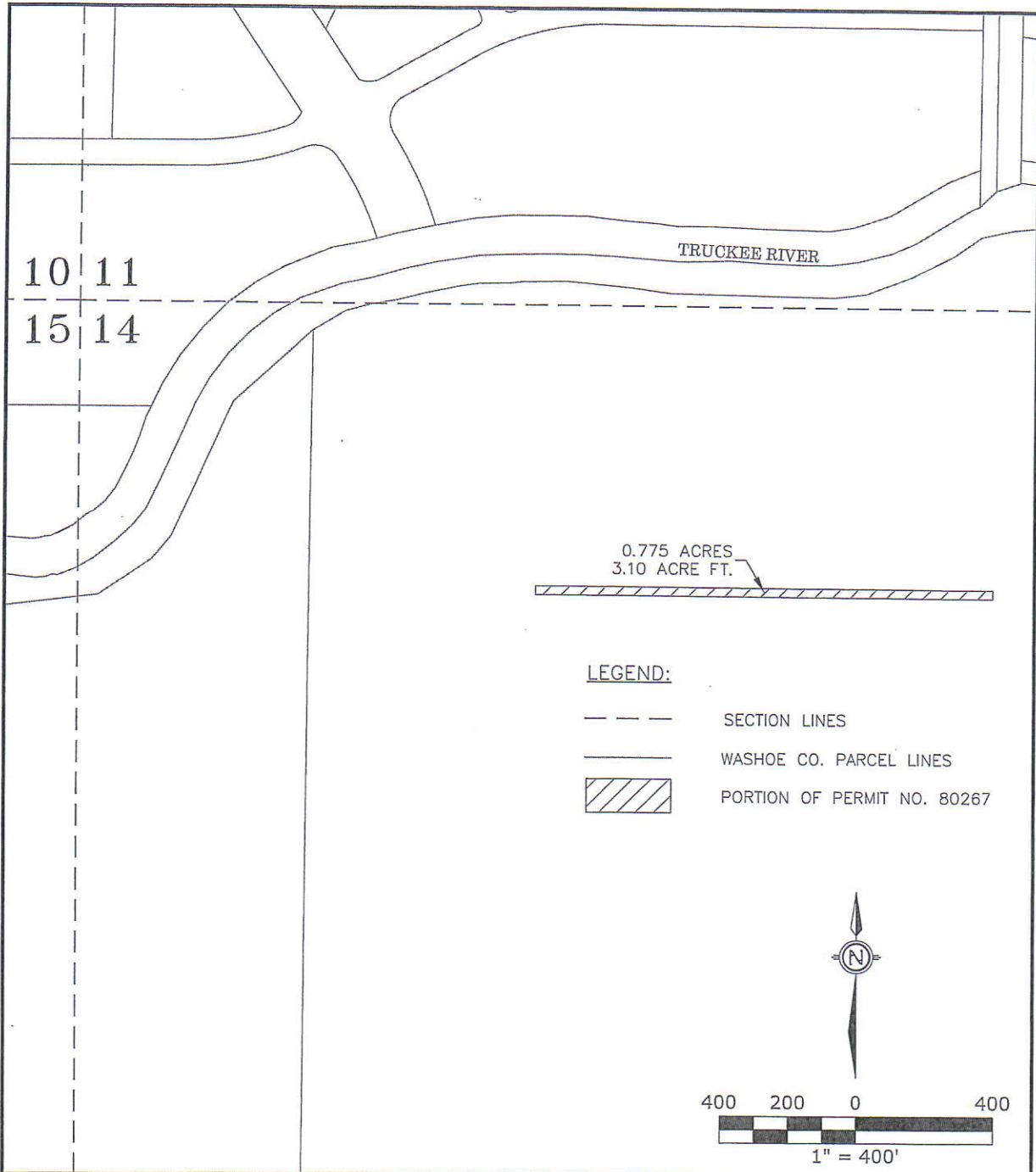
TRUCKEE MEADOWS WATER AUTHORITY
 CITY OF SPARKS WATER RIGHTS

**A PORTION OF THE NE 1/4
 OF SECTION 7, T.19N., R.20E., M.D.M.**

SPARKS

NEVADA

Project No:	100-01-12	
Date:	2012/12/02	
Drawn by:	CRS	SHEET
Designed by:		
Checked by:		1
Horiz. scale:	1" = 200'	of
Vertical scale:		1
Projection:		
Horiz. datum:	NAD83	
Vertical datum:		



P.O. Box 3299
Reno, NV 89505
p. 775.786.5111
f. 775.786.5114
www.usgeomatics.com

TRUCKEE MEADOWS WATER AUTHORITY
CITY OF SPARKS WATER RIGHTS

**A PORTION OF THE NW 1/4
OF SECTION 14, T.19N., R.20E., M.D.M.**

SPARKS

NEVADA

Project No:	100-01-12	SHEET
Date:	2012/12/02	
Drawn by:	CRS	
Designed by:		
Checked by:		
Horiz. scale:	1" = 400'	
Vertical scale:		
Projection:		
Horiz. datum:	NAD83	1
Vertical datum:		of
		1

EXHIBIT C
Groundwater Rights - City of Sparks

----- COMMITTED WATER RIGHTS DEEDED TO CITY -----

G/W Claim No.	Deed Tracking No.	Original Acre Feet	GRANTOR	GRANTEE	Record Date	Document No.	Permit No.	Cert. No.	Sparks	Document	Net
									Deeded to Others	No.	Acre Feet to TMWA
1	1002.0	002.42	0.62 SIERRA PACIFIC POWER COMPANY	CITY OF SPARKS	05/20/93	1675674	55675				
2	1002.0	002.43	14.59 SIERRA PACIFIC POWER COMPANY	CITY OF SPARKS	11/10/92	1621182	55675				
3	1002.0	002.44	14.03 SIERRA PACIFIC POWER COMPANY	CITY OF SPARKS	03/25/94	1779863	55675				
4	1002.0	002.45	26.92 SIERRA PACIFIC POWER COMPANY	CITY OF SPARKS	11/17/93	1733396	55675				
5	1002.0	002.46	0.35 SIERRA PACIFIC POWER COMPANY	CITY OF SPARKS	07/16/93	1692927	55675				
6	1002.0	002.47	1.92 SIERRA PACIFIC POWER COMPANY	CITY OF SPARKS	09/20/93	1713801	55675				
7	1002.0	002.48	0.52 SIERRA PACIFIC POWER COMPANY	CITY OF SPARKS	09/20/93	1713800	55675				
8	1002.0	002.49	71.27 SIERRA PACIFIC POWER COMPANY	CITY OF SPARKS	05/20/93	1675670	55675				
9	1002.0	002.50	1.39 SIERRA PACIFIC POWER COMPANY	CITY OF SPARKS	06/01/94	1803101	55675				
10	1002.0	002.51	0.19 SIERRA PACIFIC POWER COMPANY	CITY OF SPARKS	02/22/94	1767383	55675				
11	1002.0	002.52	0.64 SIERRA PACIFIC POWER COMPANY	CITY OF SPARKS	02/26/93	1643645	55675				
12	1002.0	002.53	0.27 SIERRA PACIFIC POWER COMPANY	CITY OF SPARKS	07/16/93	1692928	55675				
13	1002.0	002.54	1.81 SIERRA PACIFIC POWER COMPANY	CITY OF SPARKS	06/01/94	1803100	55675				
14	1002.0	002.55	0.81 SIERRA PACIFIC POWER COMPANY	CITY OF SPARKS	09/20/93	1713799	55675				
15	1002.0	002.56	0.68 SIERRA PACIFIC POWER COMPANY	CITY OF SPARKS	11/17/93	1733395	55675				
16	1002.0	002.57	1.69 SIERRA PACIFIC POWER COMPANY	CITY OF SPARKS	08/18/93	1703448	55675				
17	1002.0	002.58	2.90 SIERRA PACIFIC POWER COMPANY	CITY OF SPARKS	09/20/93	1713802	55675				
18	1002.0	002.59	0.70 SIERRA PACIFIC POWER COMPANY	CITY OF SPARKS	07/16/93	1692929	55675				
19	1002.0	002.60	37.73 SIERRA PACIFIC POWER COMPANY	CITY OF SPARKS	11/23/92	1624754	55675				
20	1002.0	002.61	0.52 SIERRA PACIFIC POWER COMPANY	CITY OF SPARKS	02/03/93	1643644	55675				
21	1002.0	002.79	22.38 SIERRA PACIFIC POWER COMPANY	CITY OF SPARKS	10/12/93	1721376	55675				
22	1002.0	002.82	1.00 SIERRA PACIFIC POWER COMPANY	CITY OF SPARKS	05/20/93	1675673	55675				
23	1002.0	002.89	29.35 SIERRA PACIFIC POWER COMPANY	CITY OF SPARKS	07/16/93	1692923	55675				
24	1002.0	002.90	3.90 SIERRA PACIFIC POWER COMPANY	CITY OF SPARKS	03/25/94	1779861	55675				
25	1002.0	002.93	3.56 SIERRA PACIFIC POWER COMPANY	CITY OF SPARKS	02/03/93	1643640	55675				
26	1002.0	002.95	1.21 SIERRA PACIFIC POWER COMPANY	CITY OF SPARKS	02/03/93	1643643	55675				
27	1002.0	003.00	20.00 ROBERT L. HELMS CONSTRUCTION & DVLP. C	CITY OF SPARKS	11/21/91	1525382	56240	13868			
28	1012.0	003.01	50.00 DERMODY PROPERTIES, INC.	CITY OF SPARKS	10/05/90	1432694	54220		45.60	3425506	4.40
29	1012.0	004.03	0.19 SIERRA PACIFIC POWER COMPANY	CITY OF SPARKS	11/23/92	1624752	54334	15140			
TOTALS			311.14						45.60		4.40