

EXHIBIT "A"

A portion of that certain Access & Utility Easement dedicated on Parcel Map 2628, recorded in the Official Records of Washoe County, Nevada as document 1599946 on August 26, 1992, more particularly described as follows:

Commencing at the Southwest corner of Parcel 3 of said Parcel Map 2628, thence along the West line of said Parcel 3, North 00°06'00" East, a distance of 30.02 feet, to the North line of Hymer Avenue as dedicated on Tract Map 3681, recorded in the Official Records of Washoe County, Nevada as document 2333819 on April 29, 1999 and the Point of Beginning for this description;

Thence along the West line of said Parcel 3, North 00°06'00" East, a distance of 132.12 feet to the Northwest corner of Adjusted Parcel 3 as shown on Record of Survey 3032, recorded in the Official Records of Washoe County, Nevada as documents 1992829 on May 8, 1996;

Thence along the North line of said Adjusted Parcel 3, South 89°49'21" East, a distance of 31.31 feet to its intersection with the east line of said Access & Utility Easement;

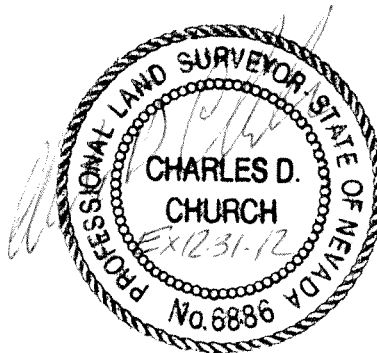
Thence along the east line of said Access & Utility Easement the following three (3) courses;

1. Along a non-tangent curve being concave southeasterly with an arc length of 15.82 feet, with a radius of 32.13 feet, with a delta angle of 28°13'02", with a chord bearing of South 14°12'30" West, with a chord length of 15.66 feet;
2. Thence North 89°54'00" West, a distance of 2.50 feet;
3. Thence South 00°06'00" West, a distance of 116.31 feet to the North line of Hymer Avenue;

Thence along the North line of Hymer Avenue, South 88°44'34" West, a distance of 25.00 feet to the point of beginning, having an area of 3352 square feet more or less.

BASIS OF BEARING: The Basis of Bearing for this description is identical to that of Parcel Map 2628, recorded in the Official Records of Washoe County Nevada as document 1599946 on August 26, 1992,

Sierra Surveying, Inc.
555 Holcomb Avenue
Reno, Nevada 89502-1875
www.sierrasurveying.com
1(775) 828-5004
Proj. No. 2001319
File: EXHIBIT A.doc
Date: 02/13/2012



2-21-2012

BASIS OF BEARING: The Basis of Bearing for this description is identical to that of Parcel Map 2628, recorded in the Official Records of Washoe County Nevada as document 1599946 on August 26, 1992,

Sierra Surveying, Inc.
555 Holcomb Avenue
Reno, Nevada 89502-1875
www.sierrasurveying.com
1(775) 828-5004
Proj. No. 2001319
File: EXHIBIT B.doc
Date: 02/13/2012

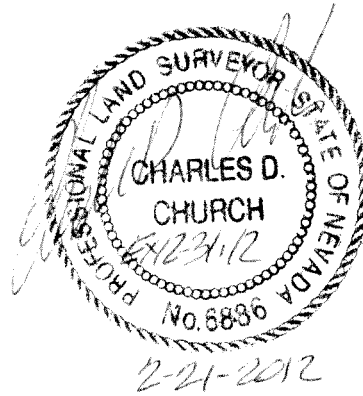


EXHIBIT "B"

A Portion of that certain Access & Utility Easement dedicated on Parcel Map 2628, recorded in the Official Records of Washoe County, Nevada as document 1599946 on August 26, 1992, more particularly described as follows:

Beginning at the Northeast corner of Adjusted Parcel 3 as shown on Record of Survey 3032, recorded in the Official Records of Washoe County, Nevada, as Document 1992829 on May 8, 1996;

Thence along the line common to Adjusted Parcels 1 and 2 of said Record of Survey 3032, along a non-tangent curve concave to the southwesterly with an arc length of 22.14 feet, with a radius of 55.00 feet, with a delta angle of $23^{\circ}04'07''$, with a chord bearing of North $37^{\circ}59'06''$ West, with a chord length of 21.99 feet;

Thence continuing along said common line, North $00^{\circ}22'25''$ East, a distance of 18.30 feet to its point of intersection with the northeastern line of said Access & Utility Easement;

Thence along the Eastern line of the Access & Utility Easement, being a non-tangent curve concave to the southwesterly with an arc length of 70.81 feet, with a radius of 70.00 feet, with a delta angle of $57^{\circ}57'31''$, with a chord bearing of South $30^{\circ}14'11''$ East, with a chord length of 67.83 feet;

Thence continuing along said Eastern line, South $01^{\circ}15'26''$ East, a distance of 75.52 feet to a point on the north line of Hymer Avenue as dedicated on Tract Map 3681, recorded in the Official Records of Washoe County Nevada as document 2333819, on April 29, 1999

Thence along said North line of Hymer Avenue, being a non-tangent curve concave to the South, with an arc length of 30.59 feet, with a radius of 45.00 feet, with a delta angle of $38^{\circ}56'33''$, with a chord bearing of South $88^{\circ}44'34''$ West, with a chord length of 30.00 feet;

Thence leaving said North line of Hymer Avenue, along the West line of said Access & Utility easement, North $01^{\circ}15'26''$ West, a distance of 75.52 feet;

Thence continuing along said West line, being a tangent curve concave to the westerly with an arc length of 25.56 feet, with a radius of 40.00 feet, with a delta angle of $36^{\circ}37'02''$, to its intersection with the North line of Adjusted Parcel 3;

Thence along the North line of Adjusted Parcel 3, South $89^{\circ}05'58''$ East, a distance of 17.67 feet to the point of beginning, having an area of 3466 square feet more or less.

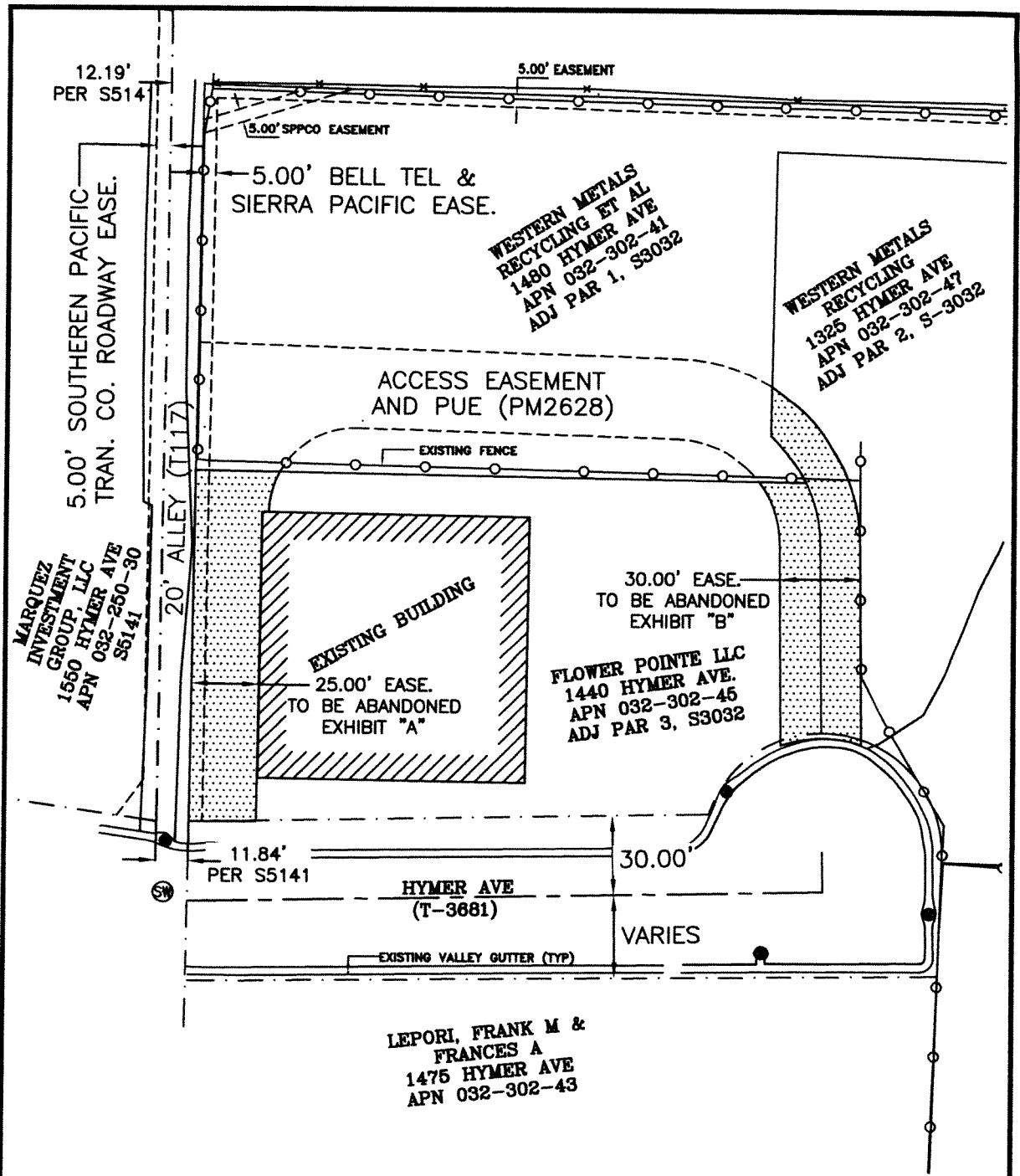


EXHIBIT "C"
ABANDONMENT OF ACCESS
EASEMENT
1440 HYMER WAY

SIERRA SURVEYING, INC.
 555 HOLCOMB AVENUE
 RENO, NEVADA 89502-1875
 TELEPHONE: (775) 828-5004
 FAX: (775) 337-0313
 SIERRASURVEYING@SBCGLOBAL.NET

DATE: 02/03/2012

PROJECT NO. 2001319