

ADDRESS: 1327 PYRAMID WAY

CIVIL IMPROVEMENT PLANS

NORTH TRUCKEE DITCH REHAB

BID NO. 20/21-004 PWP #WA-2021-067

SPARKS, WASHOE COUNTY, NEVADA

OWNER
 NEW COVENANT CHURCH
 1635 GREG STREET
 SPARKS, NV 89431
 775-470-5919

CIVIL ENGINEER
 ODYSSEY ENGINEERING, INC.
 895 ROBERTA LANE, SUITE #104
 SPARKS, NV 89431
 (775) 359-3303



VICINITY MAP

CITY OF SPARK APPROVAL:

 JON R. ERICKSON, P.E., P.T.O.E.
 CITY ENGINEER
 11/17/2020
 DATE:

CIVIL SHEET INDEX

- T-1 TITLE SHEET
- S-1 CIVIL SITE/UTILITY PLAN
- G-1 CIVIL GRADING PLAN
- P-1 PIPE PROFILE
- D-1 CIVIL DETAILS
- D-2 CIVIL DETAILS

BASIS OF BEARING:

BASED ON NEVADA STATE PLANE COORDINATE SYSTEM OF 1983, WEST ZONE, 83/94. ALL COORDINATES ARE GROUND VALUES USING A COMBINED GRID TO GROUND SCALE OF 1.000197939.

BASIS OF ELEVATION:

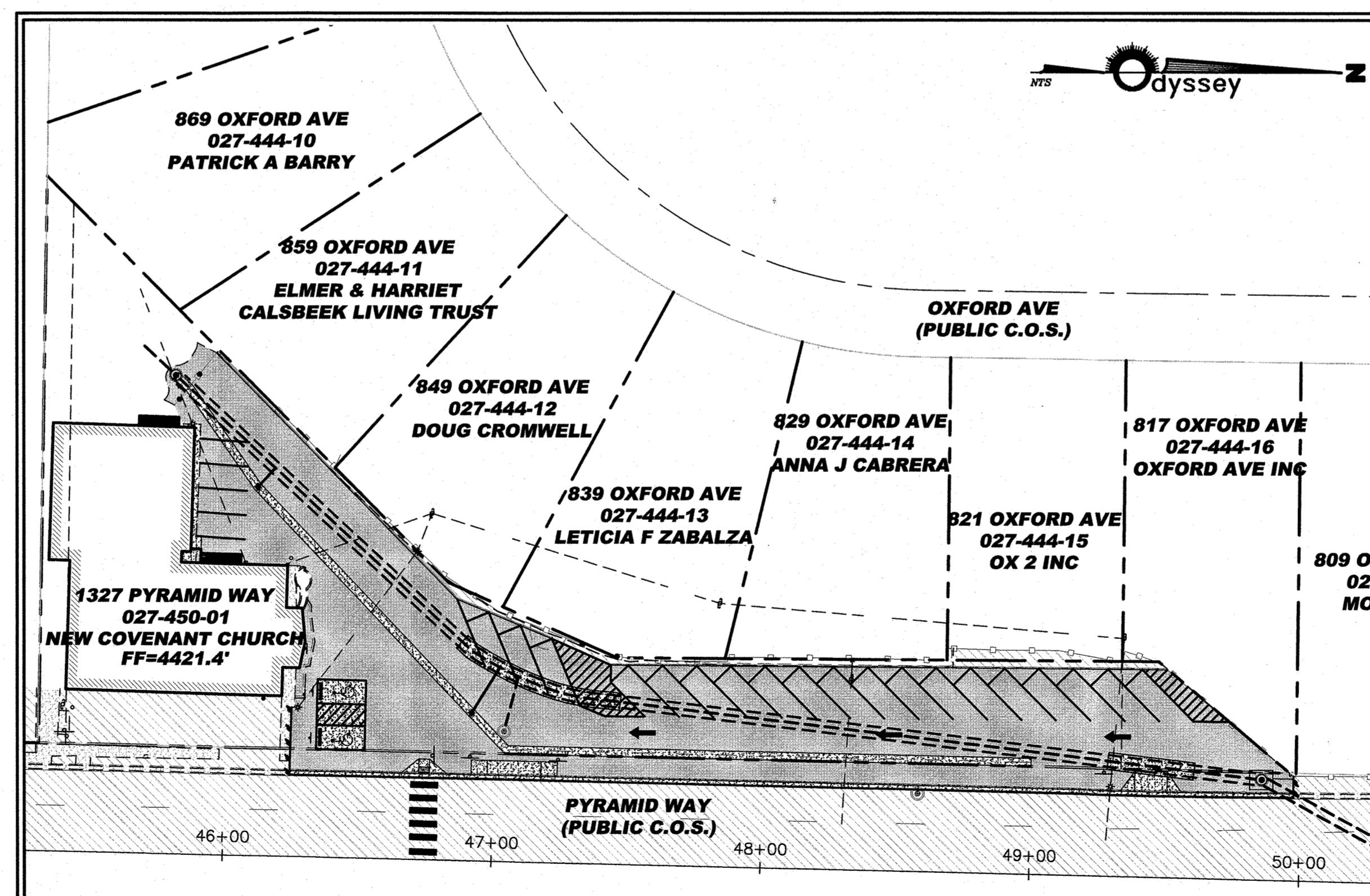
BASED ON NORTH AMERICAN VERTICAL DATUM OF 1988 (NAVD 88) USING CITY OF SPARKS BENCH MARK NO. 3005 WITH PUBLISHED ELEVATION OF 4413.40'

ENGINEER'S CERTIFICATE

THESE PLANS SHEETS T-1 OF 6 THRU D-2 OF 6 HAVE BEEN PREPARED IN ACCORDANCE WITH ACCEPTED ENGINEERING PROCEDURES AND GUIDELINES, AND ARE IN SUBSTANTIAL COMPLIANCE WITH APPLICABLE STATUTES, CITY ORDINANCES, STANDARDS, AND CITY CODE. IN THE EVENT OF CONFLICT BETWEEN ANY PORTION OF THESE PLANS AND CITY CODE, CITY STANDARDS SHALL PREVAIL.

LIST OF ABBREVIATIONS

A.C.	ASPHALTIC CONCRETE	L.F.	LINEAL FEET
A.P.	ANGLE POINT	L.P.	LOW POINT
B.C.	BEGIN CURVE	L.S.	LIGHT STANDARD
B.F.C.	BACK FACE CURB	M.H.	MANHOLE
B.V.C.	BEGIN VERTICAL CURVE	P.	PAD ELEVATION
B.S.	BACK OF SIDEWALK	P.I.	POINT OF INTERSECTION
C.B.	CATCH BASIN	P.O.	PUSH ON
Q	CENTERLINE	P.R.C.	POINT OF REVERSE CURVATURE
CH	CHORD	P.O.T.	POINT OF TANGENT
C.M.P.	CORRUGATED METAL PIPE	P.V.C.	POLYVINYL CHLORIDE PIPE
CONC.	CONCRETE	R	RADIAL
CONST.	CONSTRUCT	(R)	RADIUS
C.P.	CONCRETE PIPE	R.E.	RECLAIMED EFFLUENT
D.I.	DROP INLET	REF.	REFERENCE
DET.	DETAILS	RET.	RETURN
D.W.	DEWATERING OR DRIVEWAY (PER PLAN)	R.C.P.	REINFORCED CONCRETE PIPE
ELEV.	ELEVATION	RT.	RIGHT
E.C.	END OF CURVE	R/W	RIGHT OF WAY
E.V.C.	END VERTICAL CURVE	S.D.C.O.	STORM DRAIN CLEAN OUT
EXST.	EXISTING	S.S.C.O.	SANITARY SEWER CLEAN OUT
E.G.	EXISTING GRADE	S.S.	SANITARY SEWER
F.F.	FINISH FLOOR	S.W.	SIDEWALK
F.F.C.	FRONT FACE CURB	SHT.	SHEET
F.G.	FINISH GRADE	STA.	STATION
F.H.	FIRE HYDRANT	S.D.	STORM DRAIN
F.L.	FLOW LINE	T	TANGENT
F.V.A.	FLUSH VALVE ASSEMBLY	T.C.	TOP OF CURB
G	GAS	T.P.	TOP OF PAVEMENT
G.B.	GRADE BREAK	TYP.	TYPICAL
G.V.	GATE VALVE	VERT.	VERTICAL
HORIZ.	HORIZONTAL	V.C.	VERTICAL CURVE
H.P.	HIGH POINT	V.P.I.	VERTICAL POINT OF INTERSECTION
INT.	INTERSECTION	W	WATER
I.E.	INVERT ELEVATION	W.C.	WASHOE COUNTY
LT.	LEFT	W.S.E.	WATER SURFACE ELEVATION
L	LENGTH		



SITE LAYOUT

APPROVAL

DATE: 11-20-20
 DRAWN BY: JACAD 2020
 DESIGNED BY: NZY
 CHECKED BY: FAB

NORTH TRUCKEE DITCH REHAB
 TITLE SHEET

SPARKS WASHOE NEVADA

895 ROBERTA LANE, SUITE 104, SPARKS, NV 89431
 (775) 359-3303 FAX: (775) 359-3305
 ODYSSEY ENGINEERING INCORPORATED

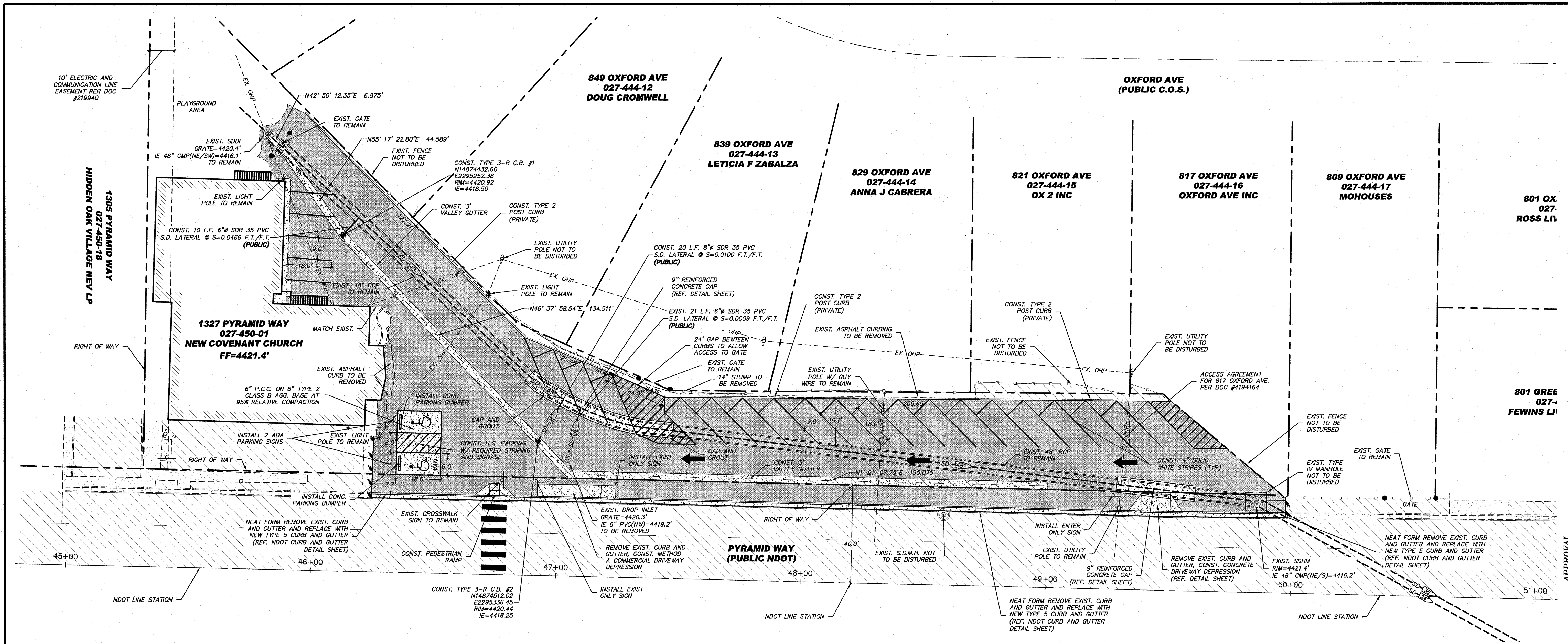
FRANK A. BIDART
 Exp. 12-31-20
 CIVIL
 No. 10504

SCALE
 HORIZ. ---
 VERT. ---

JOB NO. ---
 JOB ---

SHEET
 T-1
 OF
 6

811
 Know what's below.
 Call before you dig.

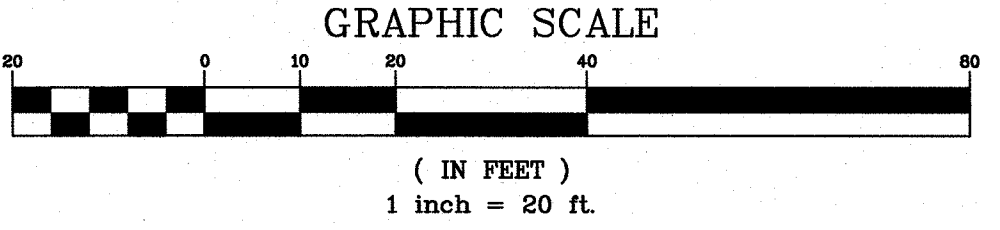
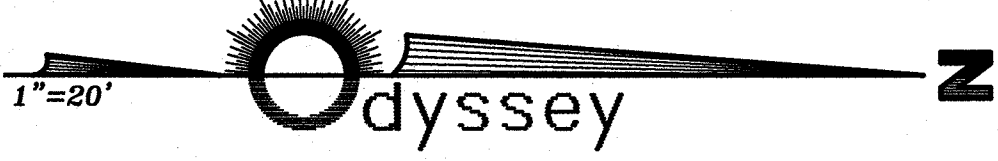


SITE NOTES:

- ALL CONSTRUCTION SHALL CONFORM TO THE STANDARD SPECIFICATIONS, AND THE LATEST STANDARD DETAILS FOR PUBLIC WORKS CONSTRUCTION 2012 ADDITION (AND ANY APPURTENANT SUPPLEMENTS) SPONSORED AND DISTRIBUTED BY SPARKS AND WASHOE COUNTY.
- THE CONTRACTOR SHALL VERIFY IN FIELD, ALL ELEVATIONS, DIMENSIONS, FLOW LINES, EXISTING CONDITIONS, AND POINT OF CONNECTION WITH ADJOINING PROPERTY (PUBLIC OR PRIVATE). ANY DISCREPANCIES SHALL BE CALLED TO THE ATTENTION OF THE ENGINEER PRIOR TO PROCEEDING WITH CONSTRUCTION. THE CONTRACTOR IS RESPONSIBLE FOR ANY AND ALL DAMAGE TO EXISTING UTILITIES DURING CONSTRUCTION. IT SHALL BE THE CONTRACTORS RESPONSIBILITY TO CONTACT THE UTILITY COMPANIES FOR LOCATIONS OR POT-HOLDING PRIOR TO CONSTRUCTION.
- THE CONTRACTOR SHALL BE RESPONSIBLE FOR ANY AND ALL DAMAGE TO EXISTING UTILITIES ENCOUNTERED DURING CONSTRUCTION. IT SHALL BE THE CONTRACTORS RESPONSIBILITY TO CONTACT THE UTILITY COMPANIES FOR LOCATIONS OR POT-HOLDING PRIOR TO CONSTRUCTION.
- ALL REQUIRED UTILITY SHUT-DOWNS SHALL BE COORDINATED WITH APPROPRIATE UTILITY COMPANY.
- THE CONTRACTOR SHALL BE RESPONSIBLE TO PROVIDE, PERMIT AND IMPLEMENT A STORM WATER POLLUTION PREVENTION PLAN IN CONFORMANCE WITH FEDERAL, STATE AND LOCAL REQUIREMENTS. THE CONTRACTOR SHALL MAINTAIN EXISTING B.M.P. IMPROVEMENTS THAT ARE IN PLACE, AND SHALL PROVIDE AND MAINTAIN ADDITIONAL B.M.P.'S AS REQUIRED TO IMPLEMENT HIS S.W.P.P.
- THE CONTRACTOR SHALL OBTAIN AND THE OWNER SHALL PAY FOR ALL NECESSARY PERMITS AND FEES REQUIRED FOR CONSTRUCTION.
- THE CONTRACTOR SHALL NOTIFY THE PROJECT ENGINEER, THE SOILS ENGINEER, NEVADA ENERGY, CITY OF RENO, AND THE TRUCKEE MEADOWS WATER AUTHORITY 48 HOURS PRIOR TO COMMENCEMENT OF WORK.
- ALL DIMENSIONS ARE TO FRONT FACE OF CURB UNLESS NOTED OTHERWISE.
- ALL STRIPING AND SIGNAGE SHALL CONFORM TO THE LATEST MANUAL ON UNIFORM TRAFFIC CONTROL DEVICES FOR STREETS AND HIGHWAYS PREPARED BY THE U.S. DEPARTMENT OF TRANSPORTATION FEDERAL HIGHWAY ADMINISTRATION.

LEGEND:

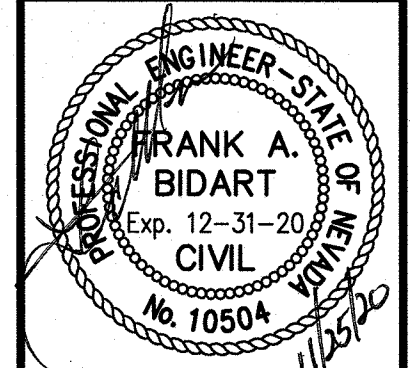
- EXISTING ASPHALT PAVING
- EXISTING PORTLAND CEMENT CONCRETE (PARKING AREA NORMAL DUTY)
TYPE 3 ASPHALT PAVING PG 64-22, 3" AC W/ 6" TYPE 3 CLASS B AGG. BASE AT 95% RELATIVE COMPACTION
PORTLAND CEMENT CONCRETE AREA
- P.C.C. FLATWORK
- CURB AND GUTTER (DASHED IF EXISTING)
- POST CURB (DASHED IF EXISTING)
- MANHOLE (DASHED IF EXISTING)
- TYPE 4-R CATCH BASIN (DASHED IF EXISTING)
- TYPE 1 CATCH BASIN (DASHED IF EXISTING)
- TYPE 3 CATCH BASIN (DASHED IF EXISTING)
- EXISTING SITE LIGHT
- SAWCUT LINE
- EX. OHP — EXIST. OVERHEAD POWER



REV.	DATE	DESCRIPTION	BY	APP'D
1	11-25-20	DRAWN BY: ACAD 2020	DESIGNED BY: NZV	CHECKED BY: FAB

895 ROBERTA LANE, SUITE 104, SPARKS, NV 89431
 (775) 358-3300 FAX: (775) 358-3301
 WWW.ODYSSEYENGINEERING.COM

Odyssey
 ENGINEERING
 INCORPORATED



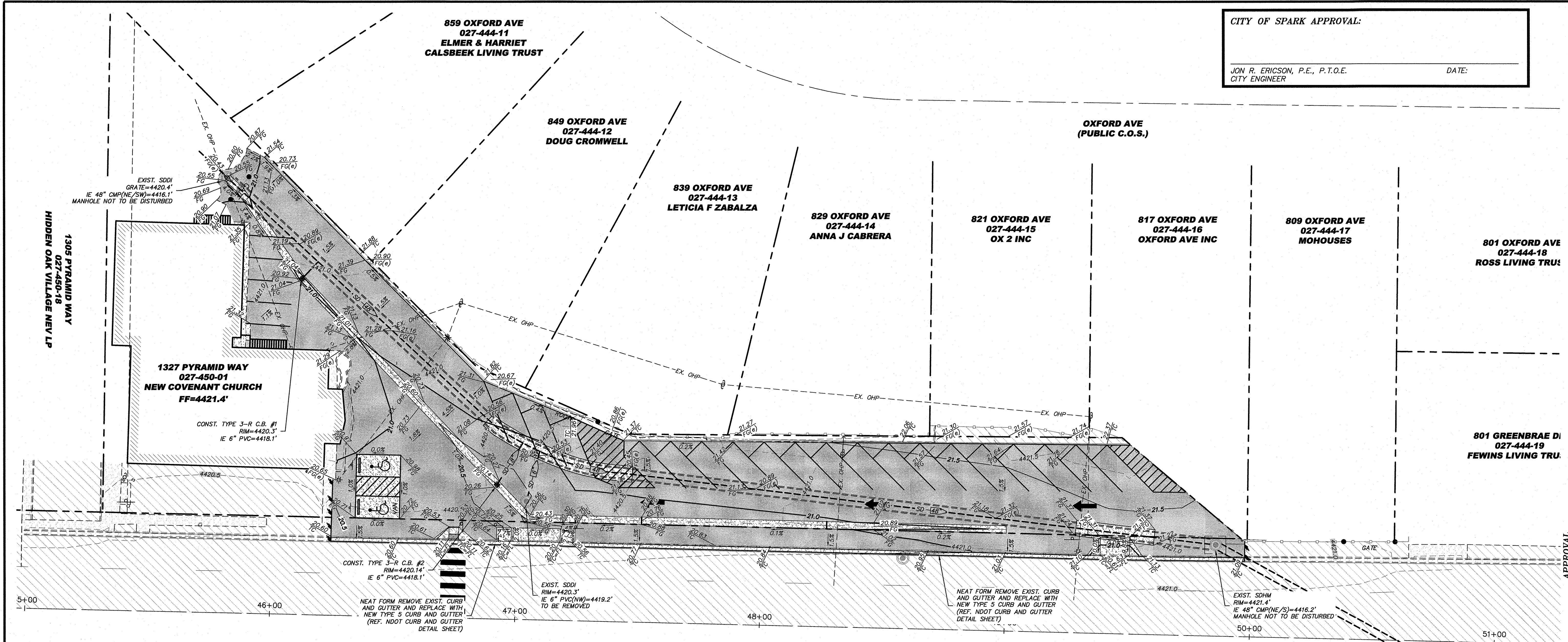
CITY OF SPARK APPROVAL:

JON R. ERICSON, P.E., P.T.O.E. DATE: _____



SCALE	HORIZ. 1"=20'
VERT.	—
JOB NO.	JOB
SHEET	S-1
OF	6

CITY OF SPARK APPROVAL:
 JON R. ERICSON, P.E., P.T.O.E. DATE:
 CITY ENGINEER



LEGEND:

	EXISTING ASPHALT PAVING	FF=96.50	ELEVATION @ FINISH FLOOR
	EXISTING PORTLAND CEMENT CONCRETE	FG=96.00	ELEVATION @ FINISH GRADE
	A.C. PAVING AREA	SG=94.00	ELEVATION @ SUBGRADE
	PORTLAND CEMENT CONCRETE AREA	SD-12	STORM DRAIN (DASHED IF EXISTING)
	PCC PAVEMENT AREA	SS-18	SANITARY SEWER (DASHED IF EXISTING)
	PROPOSED PAVER HARDSCAPE (REF. LANDSCAPE)	10"W/4"G	EXISTING WATER AND GAS
	ROCK MULCH BIOSWALE	10"W	EXISTING WATER
	EXISTING CONTOUR	4"G	EXISTING GAS
	PROPOSED CONTOUR	6"RW	EXISTING RECLAIM IRRIGATION MAIN
	EXISTING (E)	ELECT/TEL	EXISTING UNDERGROUND ELECTRIC/TELEPHONE
	EXISTING SPOT ELEVATION	ELECT	EXISTING UNDERGROUND ELECTRIC
	CURB AND GUTTER (DASHED IF EXISTING)	TEL	EXISTING UNDERGROUND TELEPHONE
	POST CURB (DASHED IF EXISTING)	F.H.	EXISTING FIRE HYDRANT
	MANHOLE (DASHED IF EXISTING)	W	EXISTING WATER SERVICE
	TYPE 4-R CATCH BASIN (DASHED IF EXISTING)	2.0%	SLOPE IN PERCENT
	TYPE 1 CATCH BASIN (DASHED IF EXISTING)	96.43	ELEVATION @ FINISH GRADE
	TYPE 3 CATCH BASIN (DASHED IF EXISTING)	82.50	ELEVATION @ TOP OF CURB
		96.43	ELEVATION @ GRADE BREAK
		96.41	ELEVATION @ FLOW LINE
		14.59% 45	SAWCUT LINE
			SPOT ELEVATION EXISTING

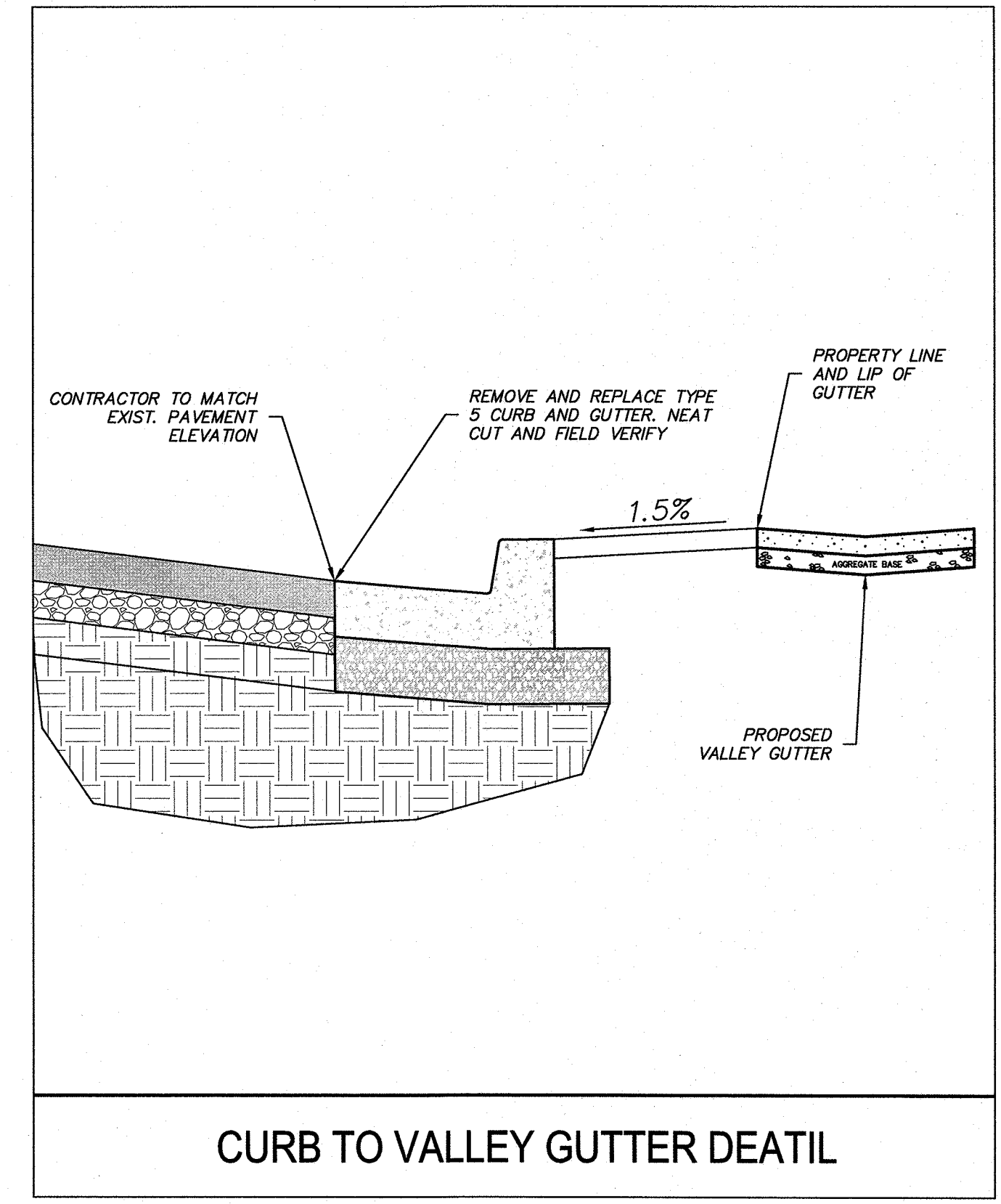
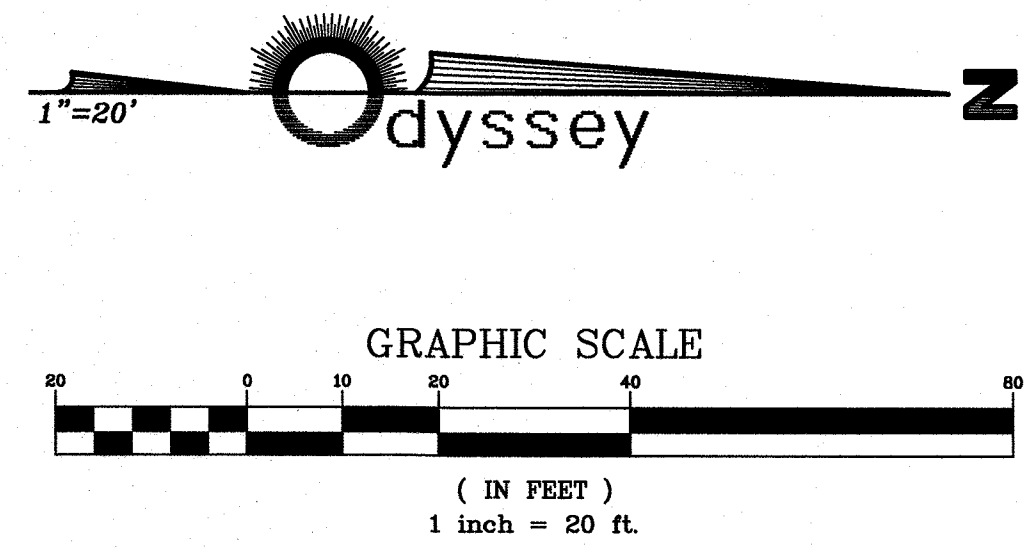
GRADING NOTES:

- ALL CONSTRUCTION SHALL CONFORM TO THE STANDARD SPECIFICATIONS, AND THE LATEST STANDARD DETAILS FOR PUBLIC WORKS CONSTRUCTION 2012 ADDITION (AND ANY APPURTENANT SUPPLEMENTS) SPONSORED AND DISTRIBUTED BY SPARKS AND WASHOE COUNTY.
- THE CONTRACTOR SHALL MAINTAIN A DUST CONTROL PROGRAM, INCLUDING WATERING OF OPEN AREAS. THE CONTRACTOR SHALL ALSO MAINTAIN CONFORMANCE WITH SECTION 040.030 OF THE WASHOE COUNTY AIR POLLUTION REGULATIONS.
- THE CONTRACTOR SHALL VERIFY IN FIELD, ALL ELEVATIONS, DIMENSIONS, FLOW LINES, EXISTING CONDITIONS, AND POINT OF CONNECTION WITH ADJOINING PROPERTY (PUBLIC OR PRIVATE). ANY DISCREPANCIES SHALL BE CALLED TO THE ATTENTION OF THE ENGINEER PRIOR TO PROCEEDING WITH CONSTRUCTION. THE CONTRACTOR IS RESPONSIBLE FOR ANY AND ALL DAMAGE TO EXISTING UTILITIES DURING CONSTRUCTION. IT SHALL BE THE CONTRACTORS RESPONSIBILITY TO CONTACT THE UTILITY COMPANIES FOR LOCATIONS OR POT-HOLING PRIOR TO CONSTRUCTION.
- THE CONTRACTOR SHALL DISPOSE OF ALL DEMOLITION DEBRIS PER FEDERAL, STATE AND LOCAL REGULATIONS AND ORDINANCES.
- ALL UNDERGROUND UTILITIES SHOWN HEREON WERE TAKEN FROM SURFACE EVIDENCE AND AVAILABLE UTILITY COMPANY RECORDS. ALL UTILITIES SHOULD BE VERIFIED IN THE FIELD. ODYSSEY ENGINEERING INC. ASSUMES NO RESPONSIBILITY FOR ACCURACY OR COMPLETENESS OF SUCH RECORDS.
- THE CONTRACTOR SHALL MAINTAIN AN ON-GOING PROCESS OF REMOVAL OF ALL SPILLAGE OF EXCAVATION MATERIAL ON ALL PAVED STREETS.
- LAND GRADING SHALL BE DONE IN A METHOD TO PREVENT DUST FROM TRAVERSING THE PROPERTY LINE.
- ALL REQUIRED UTILITY SHUT-DOWNS SHALL BE COORDINATED WITH APPROPRIATE UTILITY COMPANY AND OWNERS PERSONNEL.
- THE CONTRACTOR SHALL BE RESPONSIBLE TO PROVIDE, PERMIT AND IMPLEMENT A STORM WATER POLLUTION PREVENTION PLAN IN CONFORMANCE WITH FEDERAL, STATE AND LOCAL REQUIREMENTS. THE CONTRACTOR SHALL MAINTAIN EXISTING B.M.P. IMPROVEMENTS THAT ARE IN PLACE, AND SHALL PROVIDE AND MAINTAIN ADDITIONAL B.M.P.'S AS REQUIRED TO IMPLEMENT HIS S.W.P.P.
- THE CONTRACTOR SHALL OBTAIN AND THE OWNER SHALL PAY FOR ALL NECESSARY PERMITS AND FEES REQUIRED FOR CONSTRUCTION.
- THE CONTRACTOR SHALL NOTIFY THE PROJECT ENGINEER, THE SOILS ENGINEER, NEVADA ENERGY, CITY OF SPARKS, AND THE TRUCKEE MEADOWS WATER AUTHORITY 48 HOURS PRIOR TO COMMENCEMENT OF WORK.
- ADD 4400 FEET TO ALL TRUNCATED ELEVATIONS.
- THE NATURAL VEGETATION AND EXISTING LANDSCAPING SHALL BE PRESERVED AS MUCH AS PRACTICAL DURING SITE IMPROVEMENTS CONSTRUCTION.
- SLOPES STEEPER THAN 3:1 SHALL BE MECHANICALLY STABILIZED WITH ROCK-RIP.
- ANY ACCESS OR UNSUITABLE MATERIAL SHALL BE DISPOSED OF IN ACCORDANCE WITH THE LATEST CITY OF SPARKS REGULATIONS OR IN APPROVED AREAS.

NOTE: ELEVATION FLAGS ARE TO BFC

TRUCKEE MEADOWS REGIONAL STORMWATER QUALITY NOTES:

- THE OWNER, SITE DEVELOPER, CONTRACTOR AND OR THEIR AUTHORIZED AGENTS SHALL EACH DAY REMOVE ALL SEDIMENT, MUD, CONSTRUCTION DEBRIS, OR OTHER POTENTIAL POLLUTANTS THAT MAY HAVE BEEN DISCHARGED TO, OR ACCUMULATE IN, THE PUBLIC RIGHTS OF WAYS OF THE CITY OF SPARKS AS A RESULT OF CONSTRUCTION ACTIVITIES ASSOCIATED WITH THIS SITE DEVELOPMENT OR CONSTRUCTION PROJECT. SUCH MATERIALS SHALL BE PREVENTED FROM ENTERING THE STORM SEWER SYSTEM.
- ADDITIONAL CONSTRUCTION SITE DISCHARGE BEST MANAGEMENT PRACTICES MAY BE REQUIRED OF THE OWNER AND HIS OR HER AGENTS DUE TO UNFORESEEN EROSION PROBLEMS OR IF THE SUBMITTED PLAN DOES NOT MEET THE PERFORMANCE STANDARDS SPECIFIED IN THE CITY OF SPARKS AND THE TRUCKEE MEADOWS CONSTRUCTION SITE BEST MANAGEMENT PRACTICES HANDBOOK.
- TEMPORARY OR PERMANENT STABILIZATION PRACTICES WILL BE INSTALLED ON DISTURBED AREAS NO LATER THAN 14 DAYS AFTER THE CONSTRUCTION ACTIVITY IN THAT PORTION OF THE SITE HAS TEMPORARILY OR PERMANENTLY CEASED. SOME EXCEPTIONS MAY APPLY; REFER TO STORMWATER GENERAL PERMIT NVR100000, SECTION 1.B.A.b. (2).
- AT A MINIMUM, THE CONTRACTOR OR HIS AGENT SHALL INSPECT ALL DISTURBED AREAS, AREAS USED FOR STORAGE OF MATERIALS AND EQUIPMENT THAT ARE EXPOSED TO PRECIPITATION, VEHICLE ENTRANCE AND EXIST LOCATIONS AND ALL BMPs WEEKLY, PRIOR TO A FORECASTED RAIN EVENT AND WITHIN 24 HOURS AFTER ANY ACTUAL RAIN EVENT. THE CONTRACTOR OR HIS AGENT SHALL UPDATE OR MODIFY THE STORMWATER POLLUTION PREVENTION PLAN AS NECESSARY. SOME EXCEPTIONS TO WEEKLY INSPECTIONS MAY APPLY, SUCH AS FROZEN GROUND CONDITIONS OR SUSPENSION OF LAND DISTURBANCE ACTIVITIES. REFER TO STORMWATER GENERAL PERMIT NVR100000, SECTION 1.B.A.g.
- ACCUMULATED SEDIMENT IN BMPs SHALL BE REMOVED WITHIN SEVEN DAYS AFTER A STORMWATER RUNOFF EVENT OR PRIOR TO THE NEXT ANTICIPATED STORM EVENT WHICHEVER IS EARLIER. SEDIMENT MUST BE REMOVED WHEN BMP DESIGN CAPACITY HAS BE REDUCED BY 50 PERCENT OR MORE.



811
Know what's below.
Call before you dig.

APPROVAL

DATE: 11-25-20
 DRAWN BY: ACAD 2020
 DESIGNED BY: NZV
 CHECKED BY: FAB

DESCRIPTION

REV.

DATE

BY

APP'D

SPARKS WASHOE NEVADA

NORTH TRUCKEE DITCH REHAB GRADING PLAN

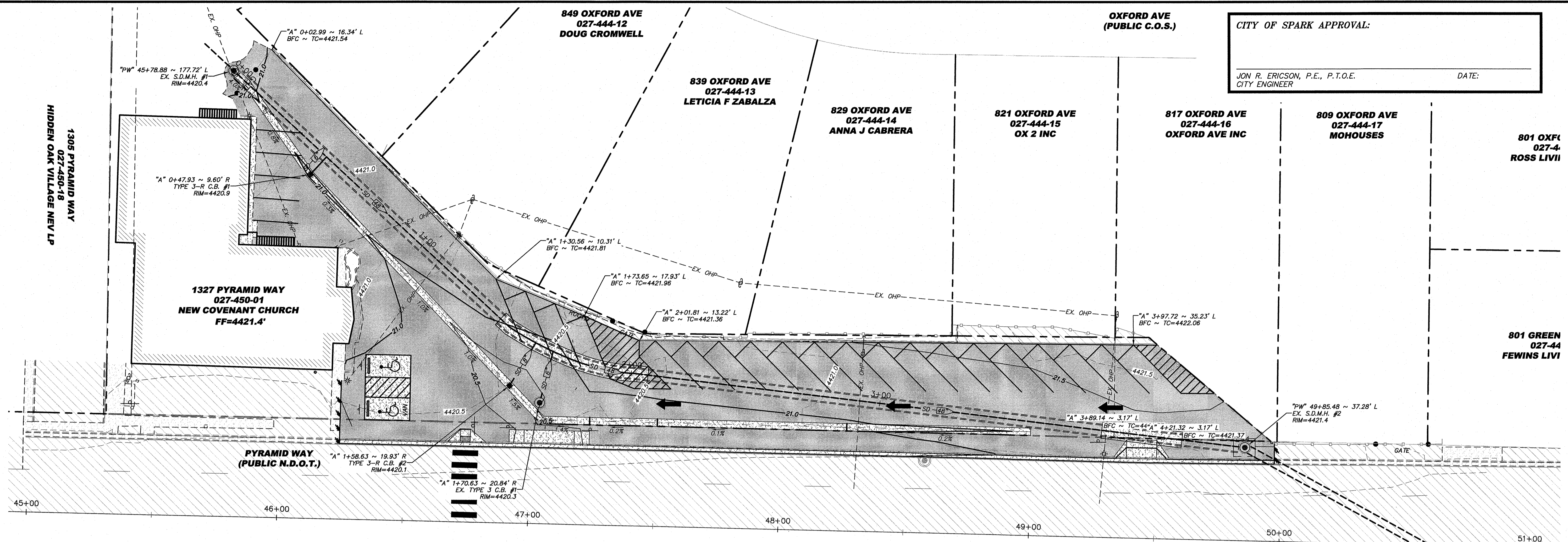
ODYSSEY ENGINEERING INCORPORATED

888 ROBERTA LANE, SUITE 104, SPARKS, NV 89431
 (775) 398-3303 FAX: (775) 398-3304
 WWW.ODYSSEYENGINEERING.COM

REGISTERED PROFESSIONAL ENGINEER - STATE OF NEVADA
 FRANK A. BIDART
 Exp. 12-31-20
 CIVIL
 No. 10504

SCALE
 HORIZ. 1"=20'
 VERT. -
 JOB NO.
 SHEET
 G-1
 OF
 6

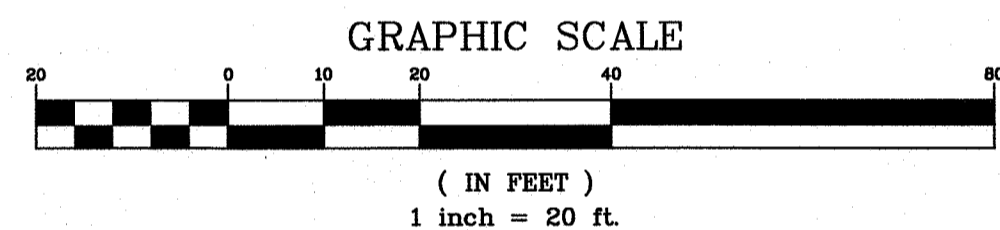
November 16, 2020 - 09:19 Dwg Name: H:\COS PYRAMID WAY STORM DRAIN\Production Drawings\GRADING PLAN.dwg Updated By: noah



CITY OF SPARK APPROVAL:

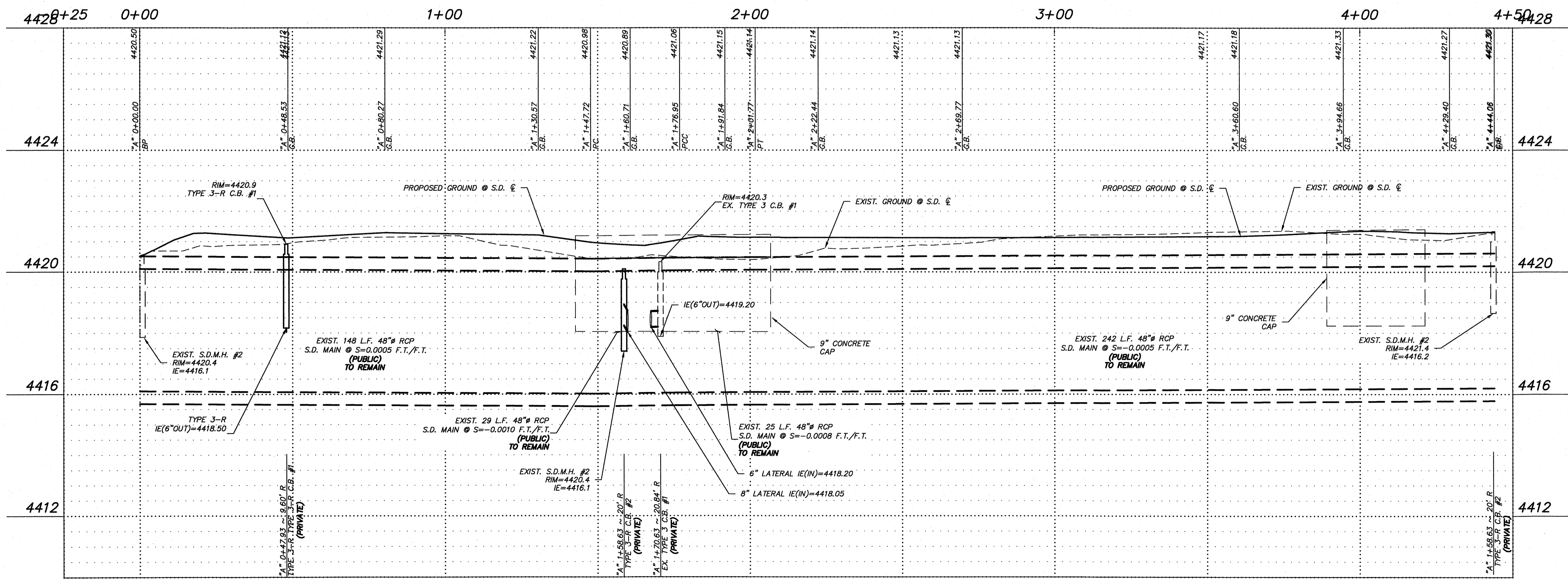
JON R. ERICSON, P.E., P.T.O.E. DATE: _____

CITY ENGINEER



PROFILE VIEW "A"

"A" -0+25.00 TO "A" 4+50.00



DATE: 11-28-20	BY: APPD
DRAWN BY: ACAD 2020	DESCRIPTION:
DESIGNED BY: NZV	DATE:
CHECKED BY: FAB	REV.:

APPROVAL

NORTH TRUCKEE DITCH REHAB
PIPE PROFILE

SPARKS WASHOE NEVADA

895 ROBERTA LANE, SUITE 104, SPARKS, NV 89431
(775) 359-3303 FAX: 775-359-3304
ODYSSEYENGINEERING.COM

Odyssey
ENGINEERING INCORPORATED

FRANK A. BIDART
Exp. 12-31-20
CIVIL
No. 10504
1/28/20

SCALE
HORIZ. 1"=20'
VERT. 1"=4'

JOB NO. 11222
SHEET P-1 OF 6



CITY OF SPARK APPROVAL:
 JON R. ERICSON, P.E., P.T.O.E. DATE:
 CITY ENGINEER

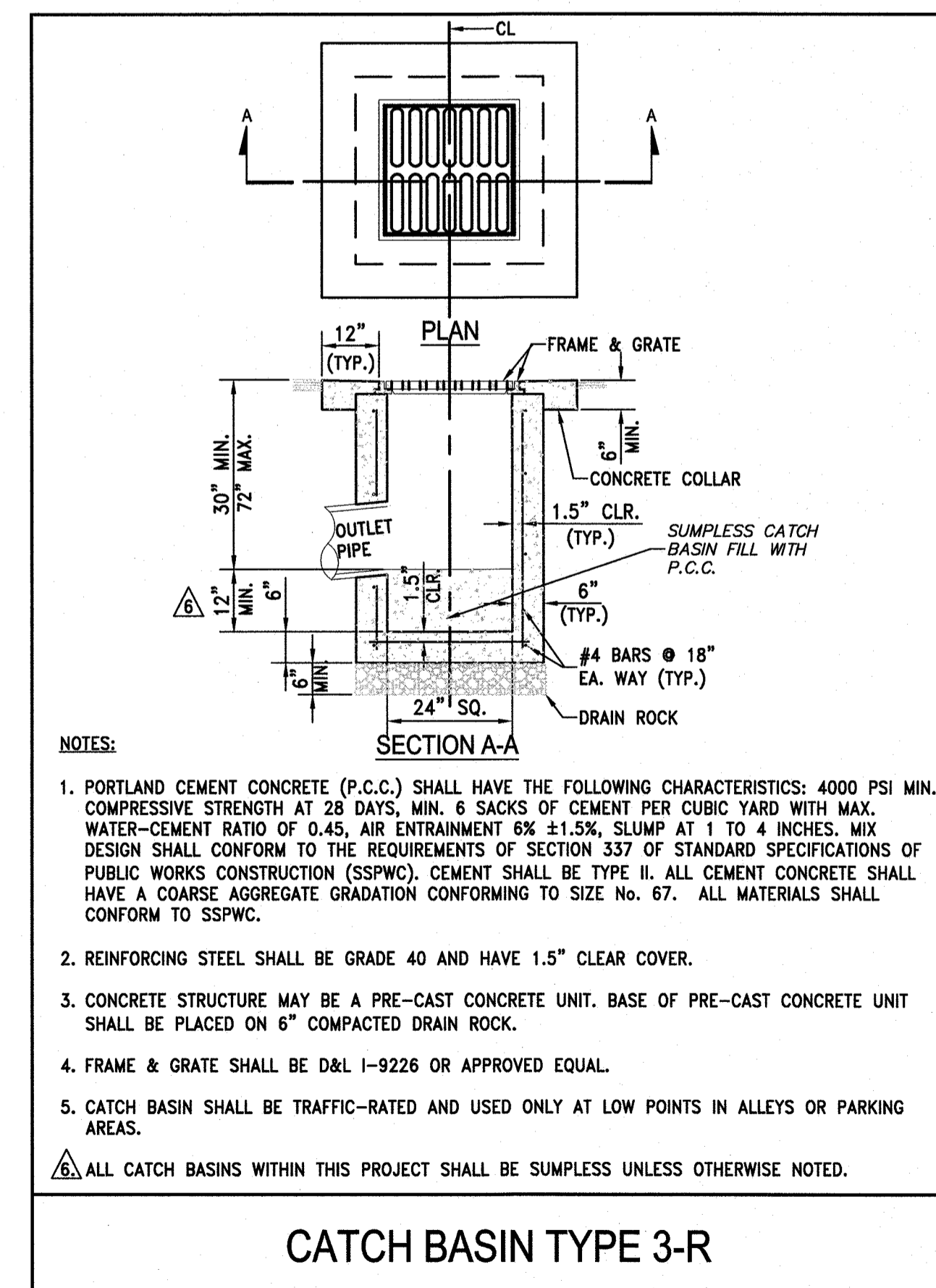
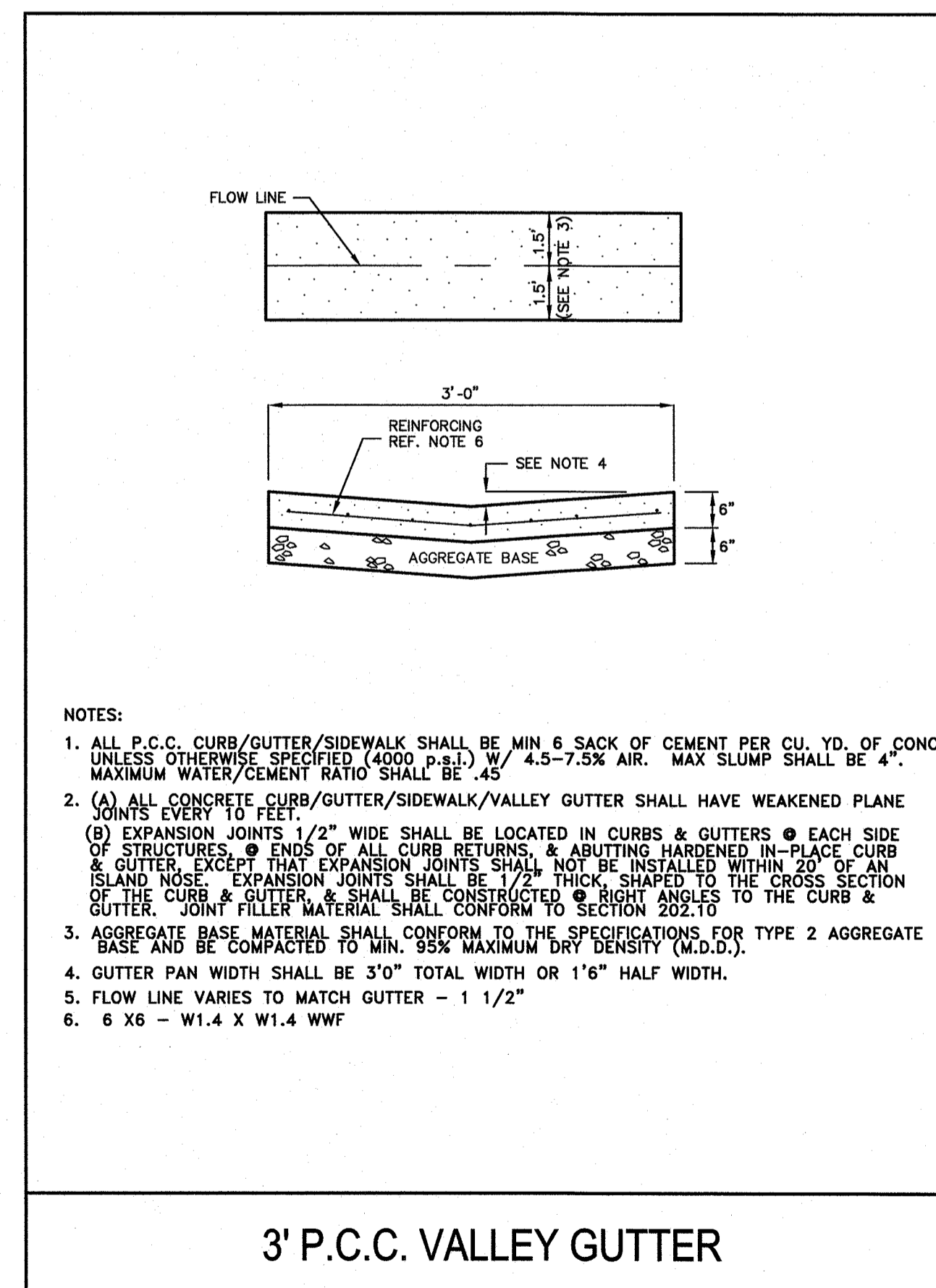
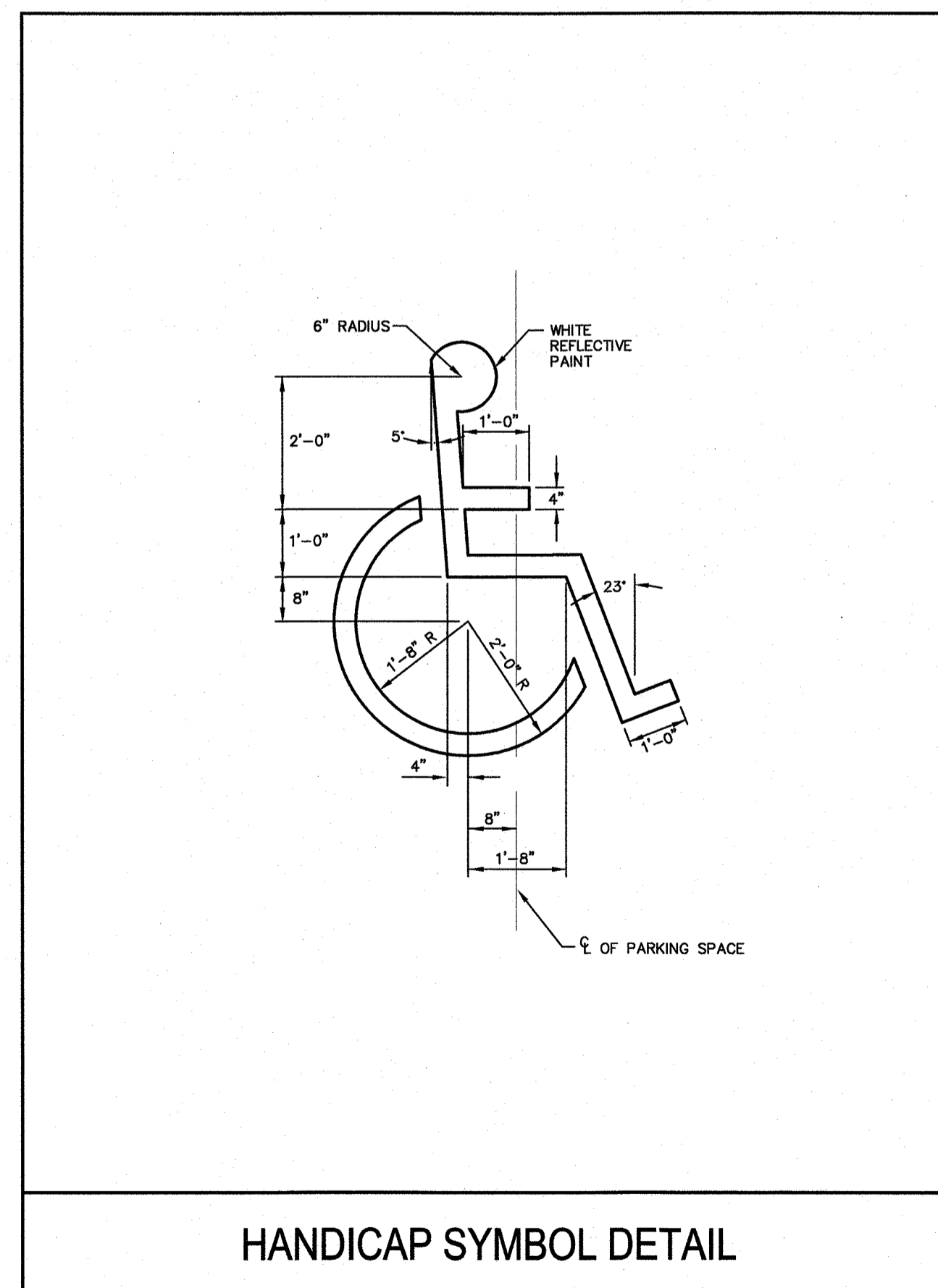
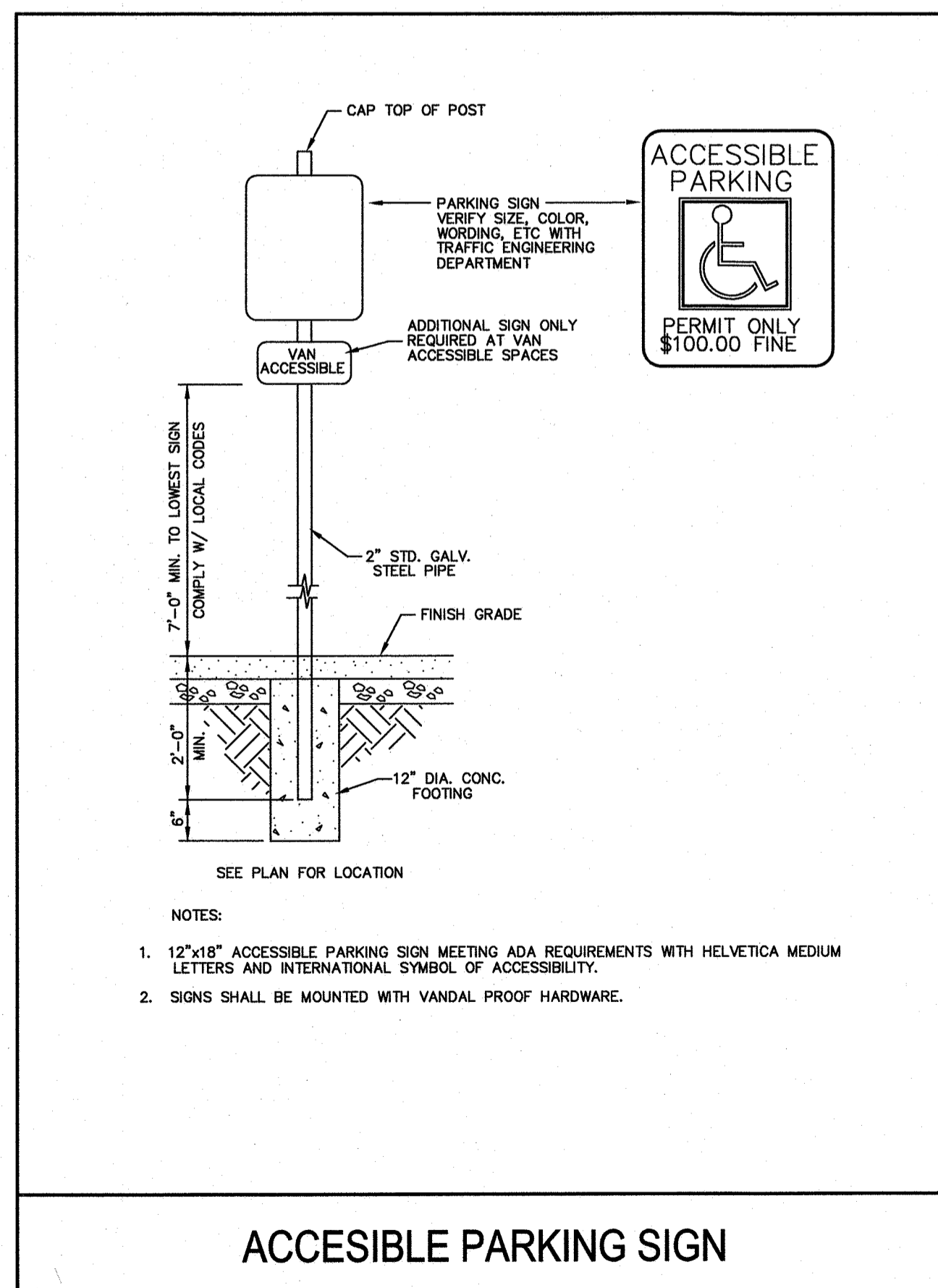
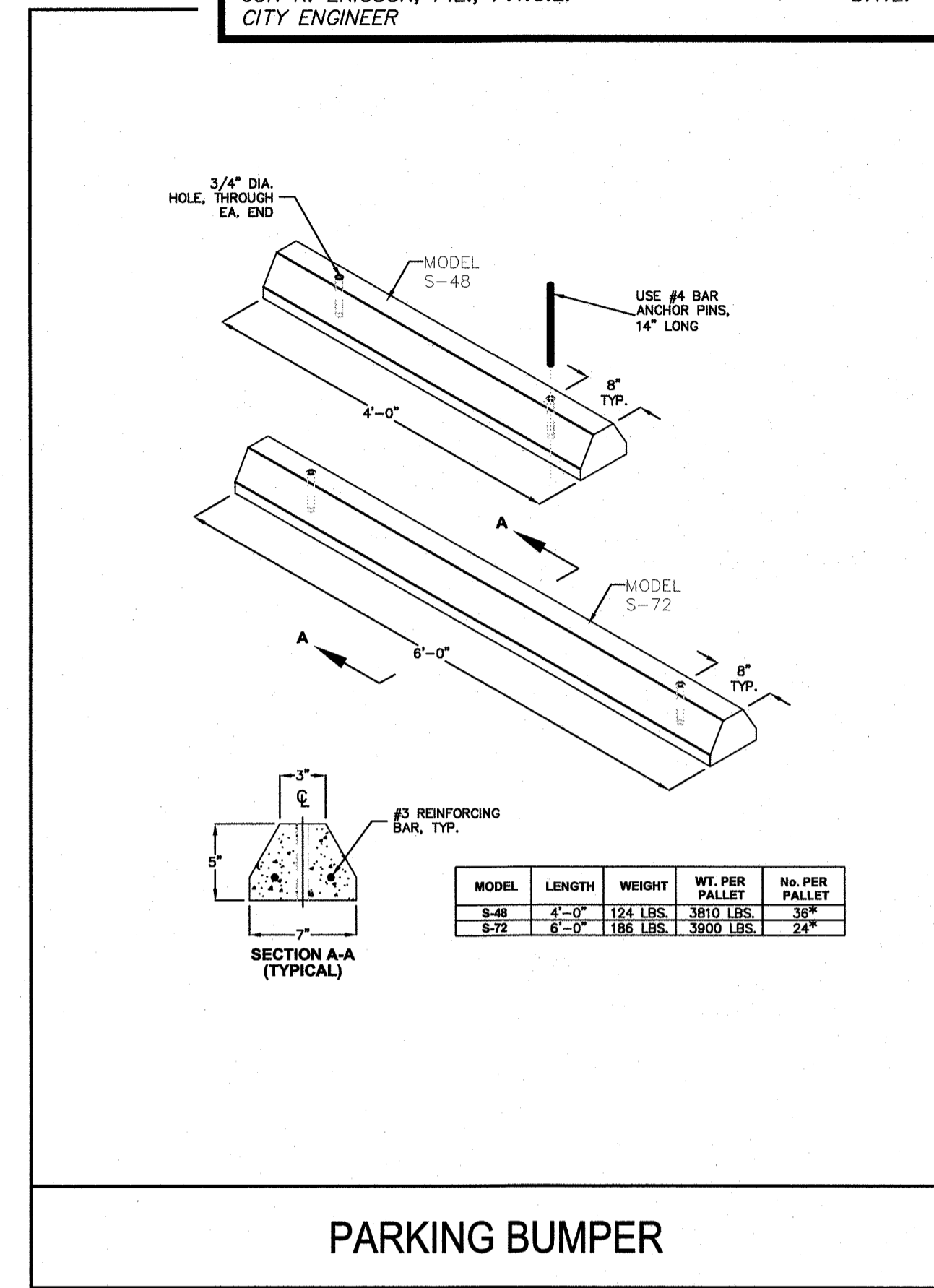
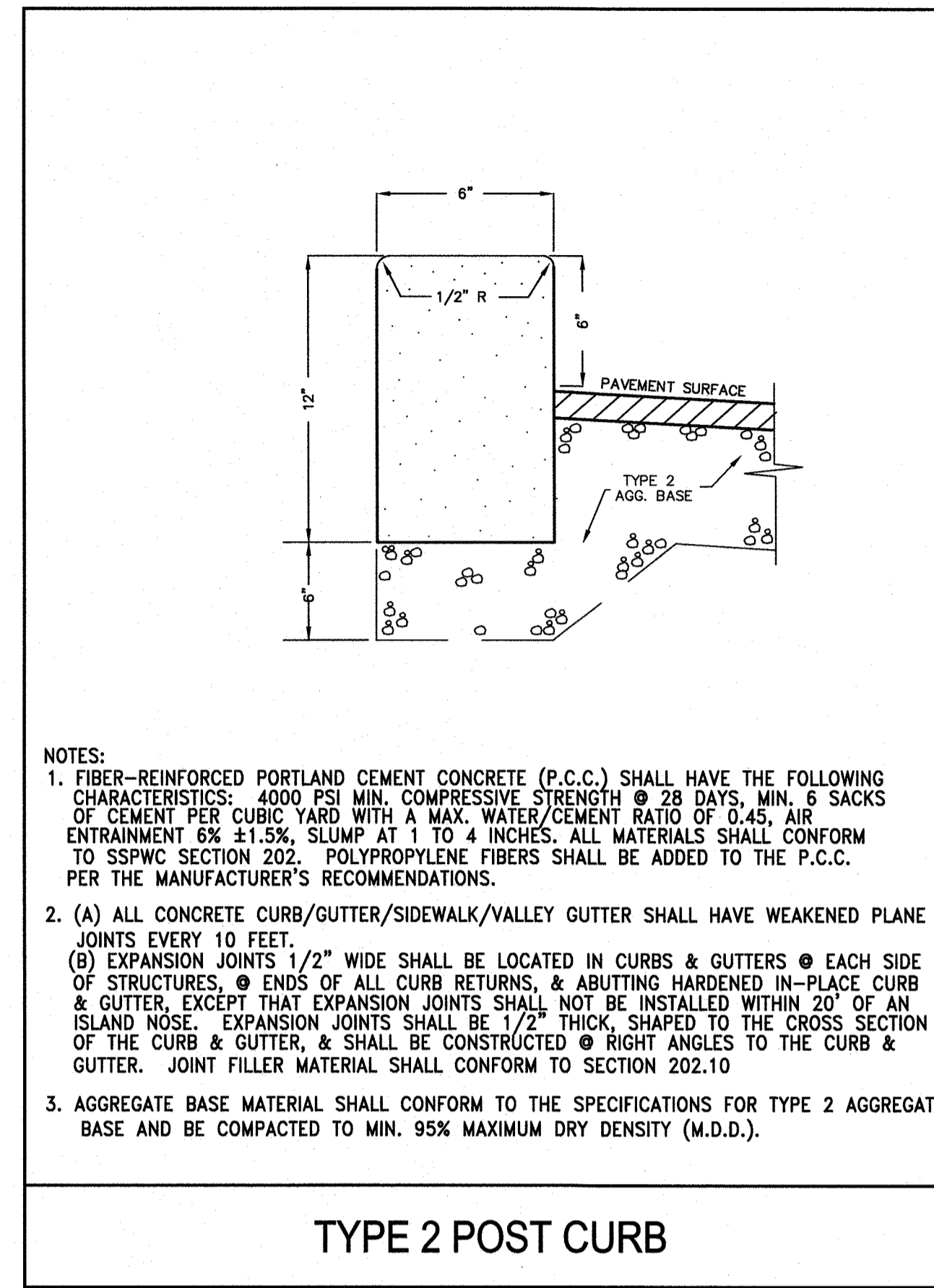
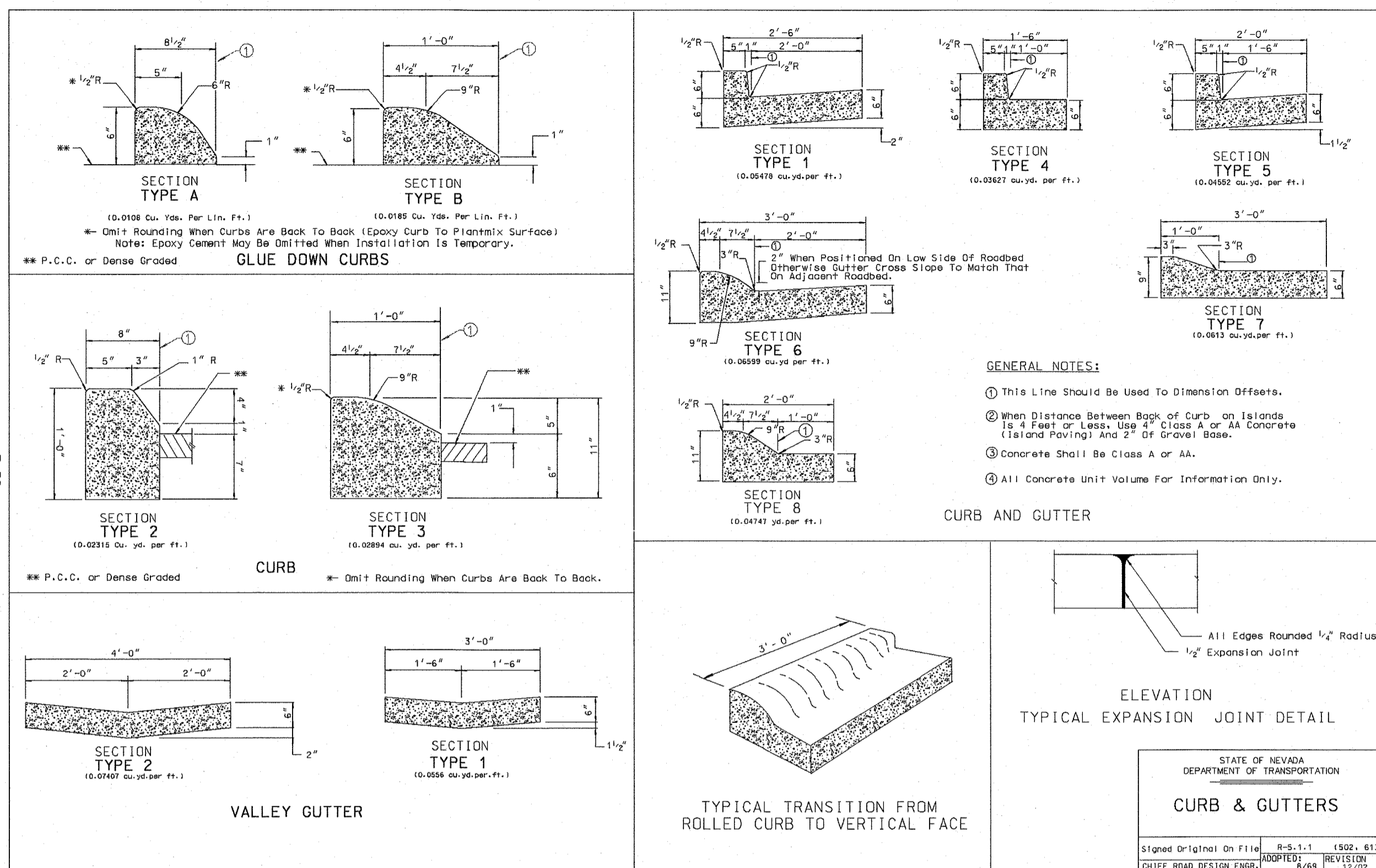
BY	APP'D	
REV.	DATE	DESCRIPTION
DATE: 11-25-20		
DRAWN BY: ACAD 2020		
DESIGNED BY: NZV		
CHECKED BY: FAB		

APPROVAL
 NORTH TRUCKEE DITCH REHAB
 DETAIL SHEET
 NEVADA
 WASHOE
 SPARKS

888 ROBERTA LANE, SUITE 104, SPARKS, NV 89431
 (775) 399-3365 FAX: (775) 399-3333
 WWW.ODYSEYENGINEERING.COM
Odyssey ENGINEERING INCORPORATED

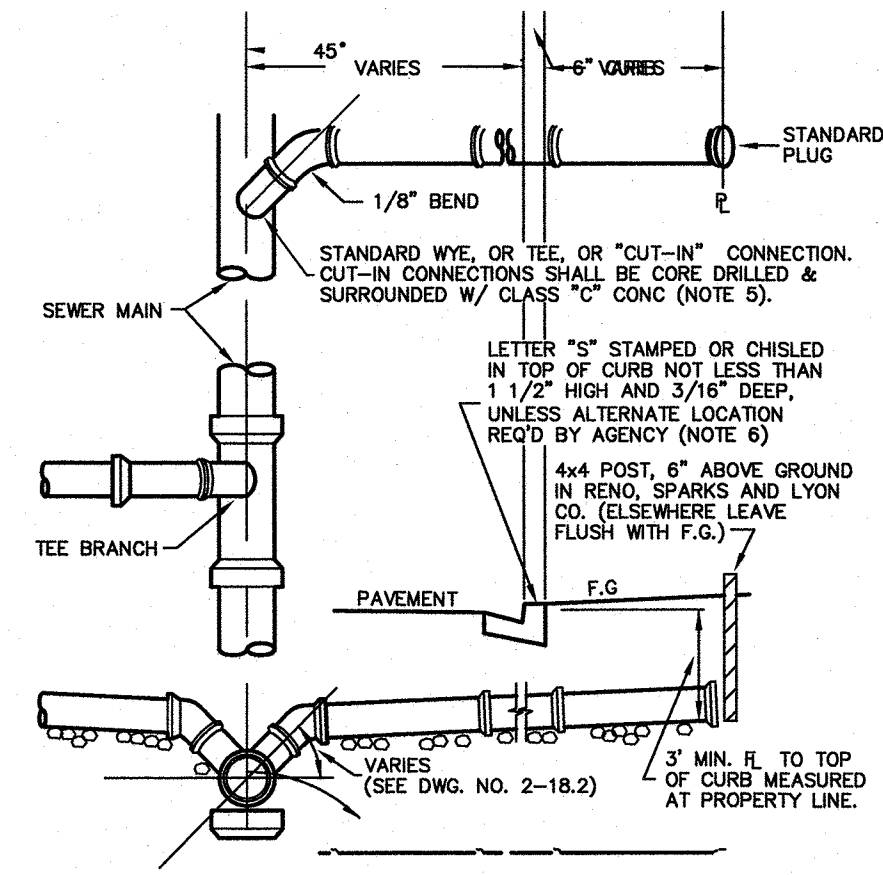
REGISTERED PROFESSIONAL ENGINEER - STATE OF NEVADA
FRANK A. BIDART
 Exp. 12-31-20
 CIVIL
 No. 10504
 11/25/20

SCALE
 HORIZ. -
 VERT. -
 JOB NO.
 JOB
 SHEET
D-1
 OF
6



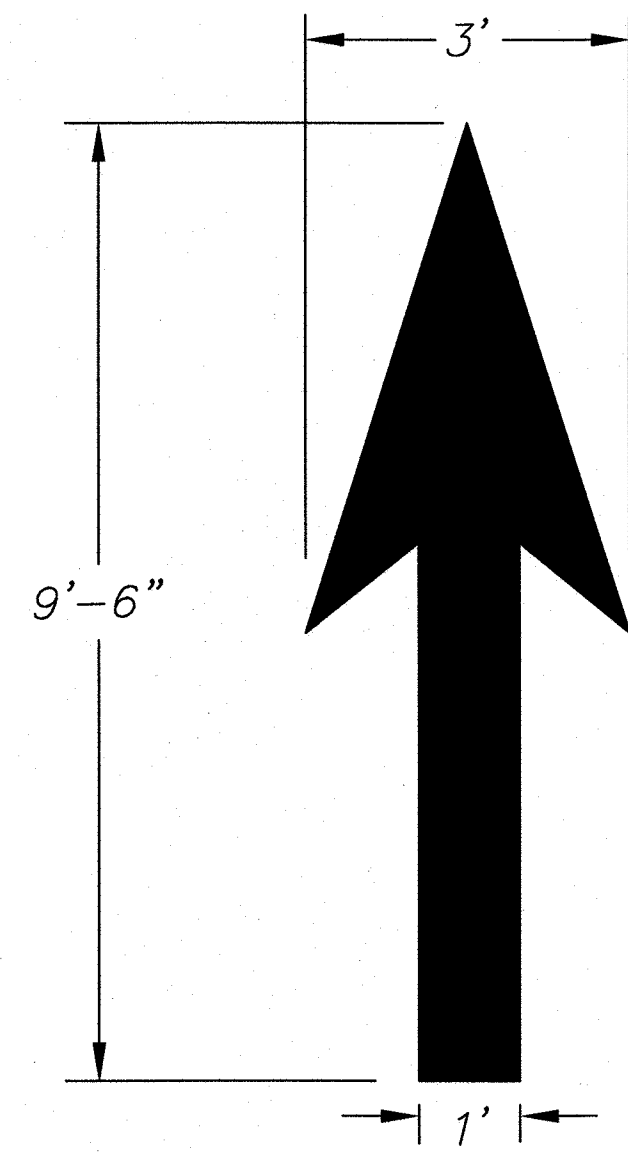
CITY OF SPARK APPROVAL:

JON R. ERICSON, P.E., P.T.O.E. DATE: _____
 CITY ENGINEER



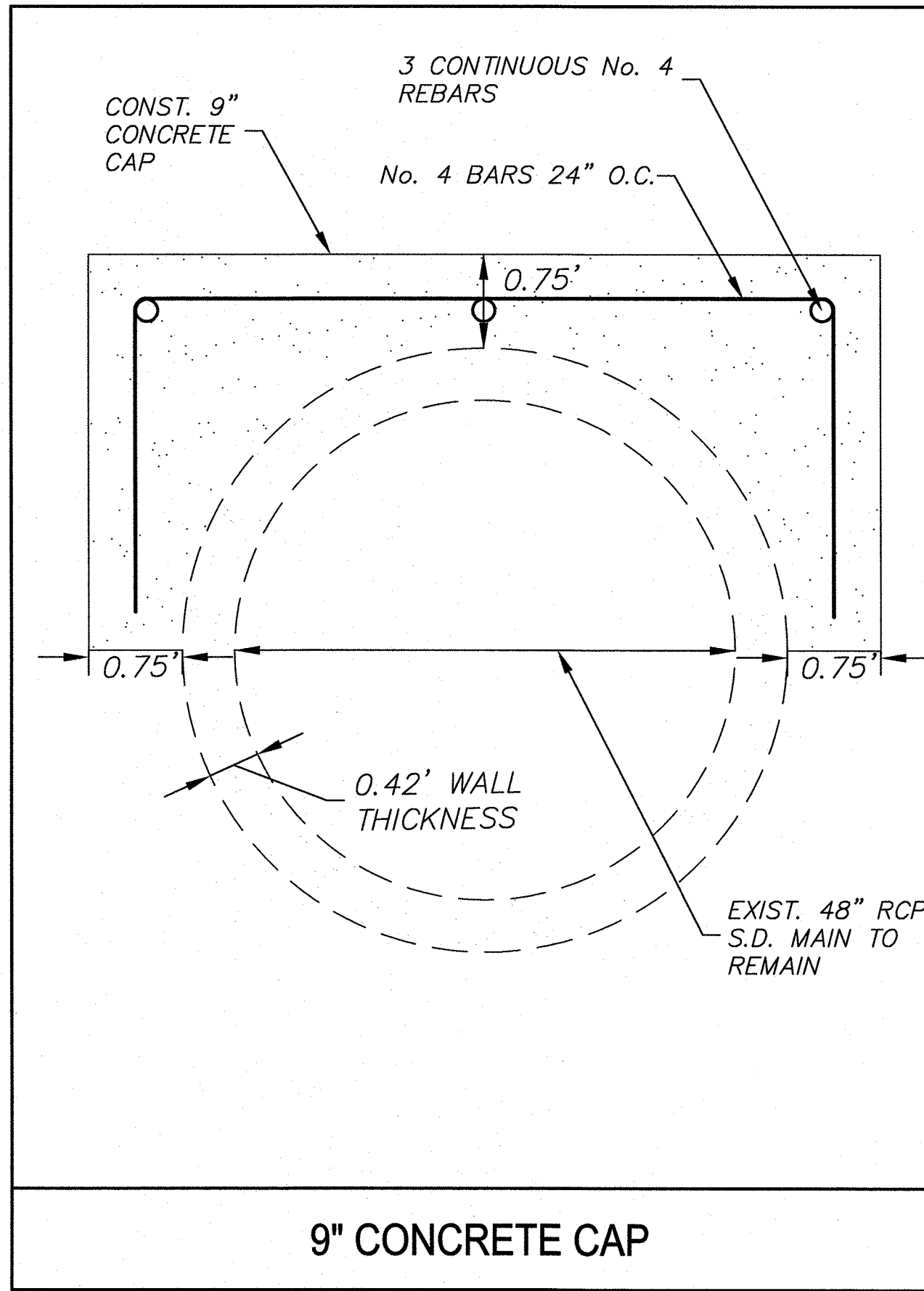
- NOTES:
1. IN NO CASE SHALL A LATERAL CONNECT TO THE SEWER MAIN DIRECTLY ON TOP OF THE PIPE.
 2. SEWER LATERALS SHALL HAVE A MINIMUM SLOPE OF 2%.
 3. ALL JOINTS ON SEWER LATERAL PIPE SHALL BE COMPRESSION TYPE OR APPROVED SOLVENT WELD.
 4. LATERAL SHALL EXTEND TO PROPERTY LINE UNLESS OTHERWISE SHOWN ON PLANS.
 5. CITY OF RENO - SEWER LATERAL "CUT-IN" CONNECTION WILL BE SHOWN ON DWG.
 6. THE LETTER "S" SHALL BE RESTAMPED INTO THE CURB WHEN CURB REMOVAL IS REQ'D.

SEWER/STORM LATERAL CONNECTION

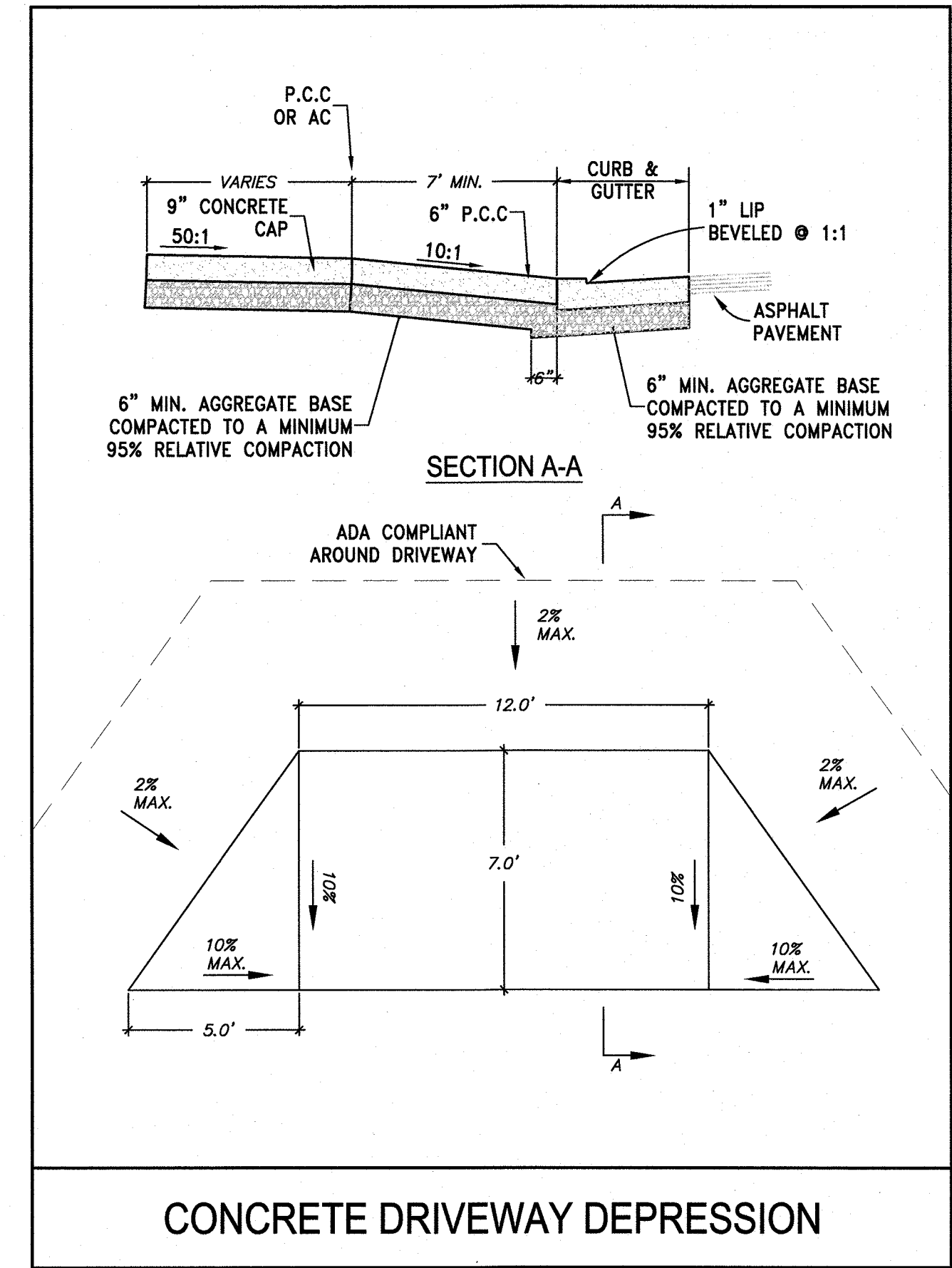


Note: All traffic flow arrows to be solid white reflective traffic paint as per dimensions above.

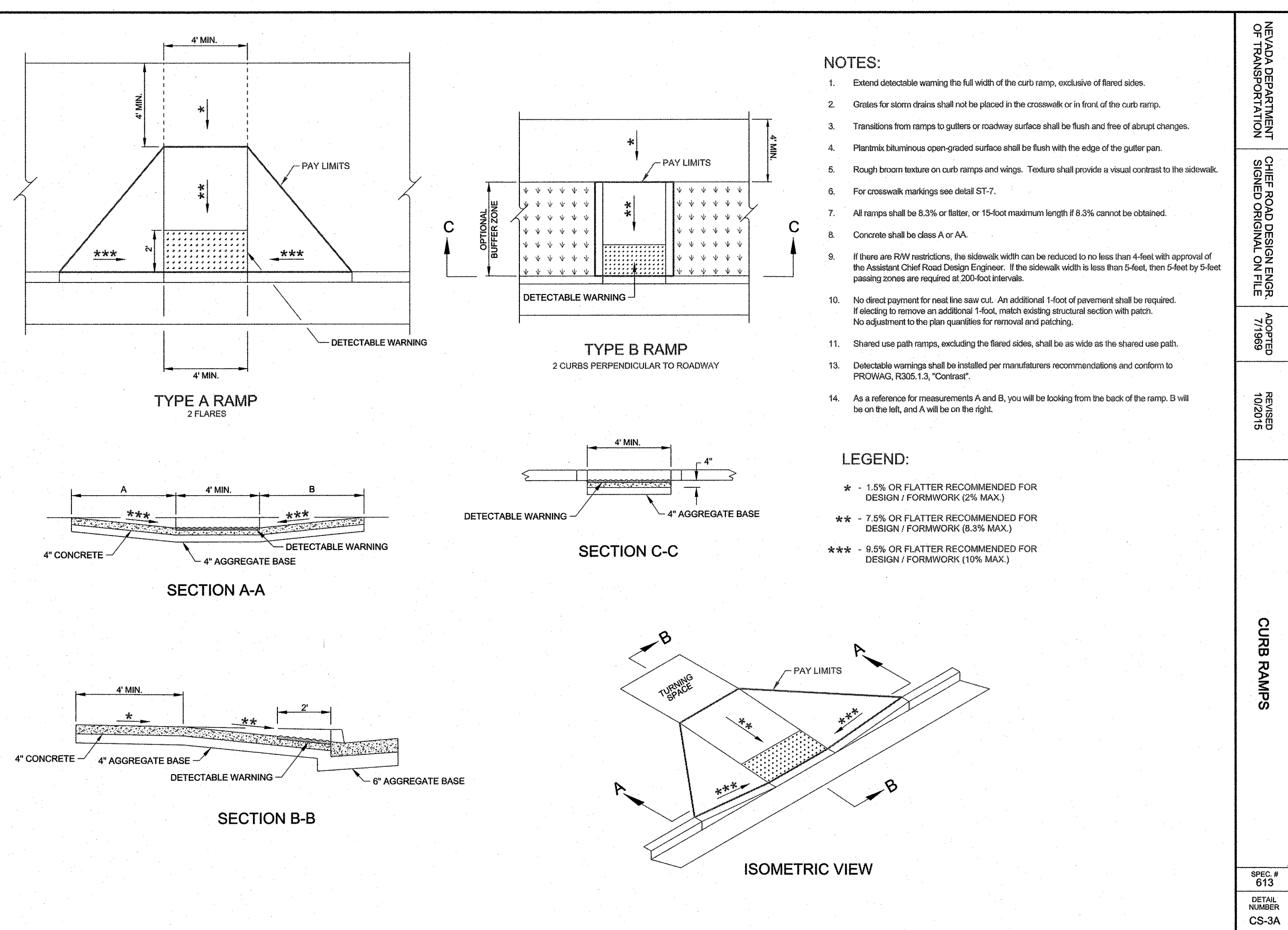
ONSITE DIRECTIONAL ARROW



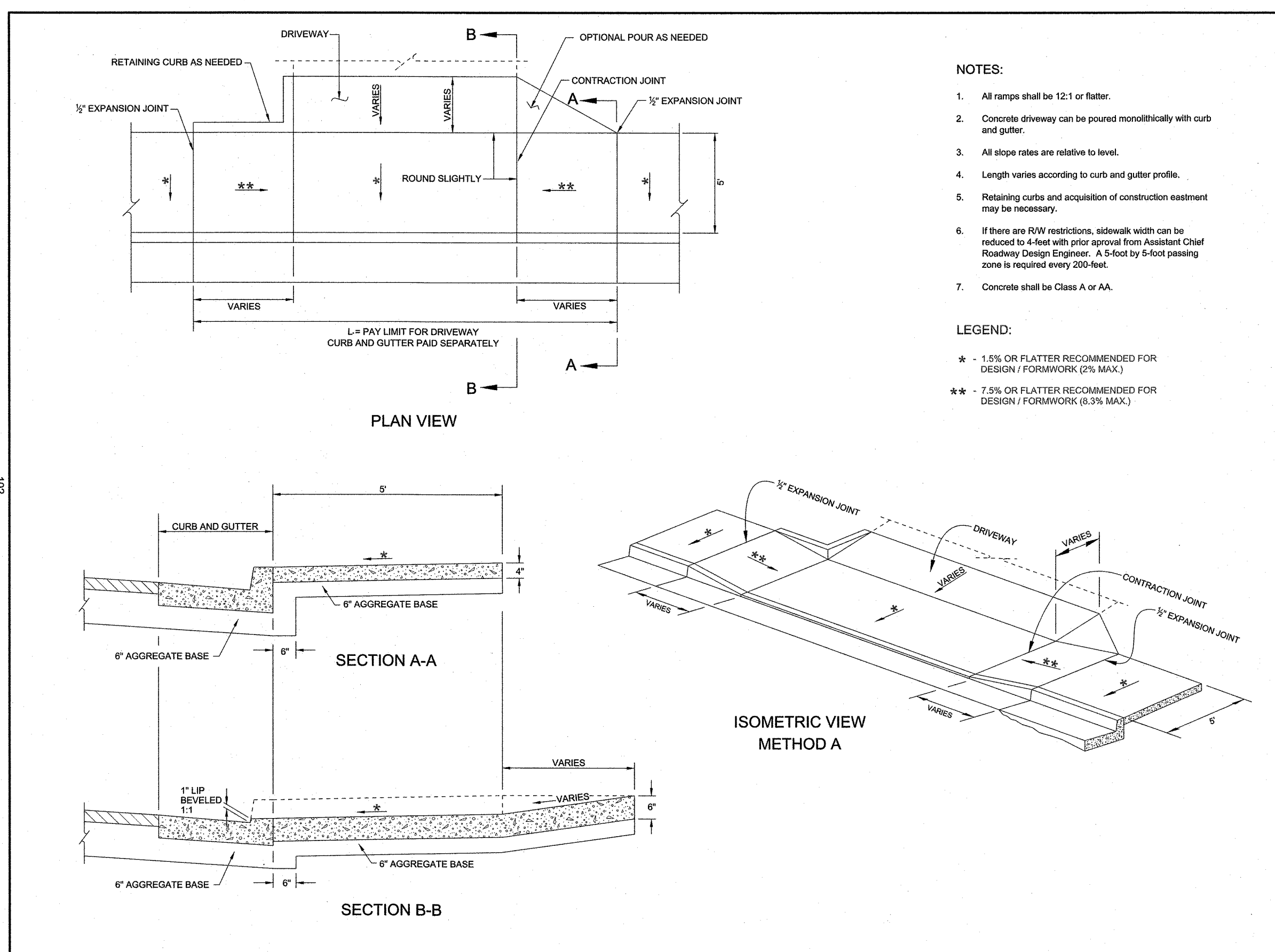
9" CONCRETE CAP



CONCRETE DRIVEWAY DEPRESSION



NEVADA DEPARTMENT OF TRANSPORTATION
 CHIEF ROAD DESIGN ENGINEER
 SIGNED ORIGINAL ON FILE
 APPROVED 7/19/19
 REVISION 10/20/15
 CURB RAMP
 SPEC # 013
 DETAIL NUMBER CS-3A



NEVADA DEPARTMENT OF TRANSPORTATION
 CHIEF ROAD DESIGN ENGINEER
 SIGNED ORIGINAL ON FILE
 APPROVED 7/19/19
 REVISION 10/20/15
 RESIDENTIAL DRIVEWAY
 SPEC # 013
 DETAIL NUMBER CS-11A

APPROVAL

DATE: 11-25-20
 DRAWN BY: ACAD 2020
 DESIGNED BY: AVY
 CHECKED BY: FAB

DESCRIPTION

DATE

REV.

BY

APPD

NORTH TRUCKEE DITCH REHAB
 DETAIL SHEET

SPARKS WASHOE NEVADA

895 ROBERTA LANE, SUITE 104, SPARKS, NV 89431
 (775) 399-3300 FAX (775) 399-3301
 ODYSSEY ENGINEERING INCORPORATED

PROFESSIONAL ENGINEER - STATE OF NEVADA
 FRANK A. BIDART
 Exp. 12-31-20
 CIVIL
 No. 10504
 1/12/20

SCALE
 HORIZ. -
 VERT. -
 JOB NO.
 JOB

SHEET
 D-2
 OF
 6