

PAH RAH PARK PLAYGROUND SURFACE IMPROVEMENT PROJECT

CITY OF SPARKS, NEVADA



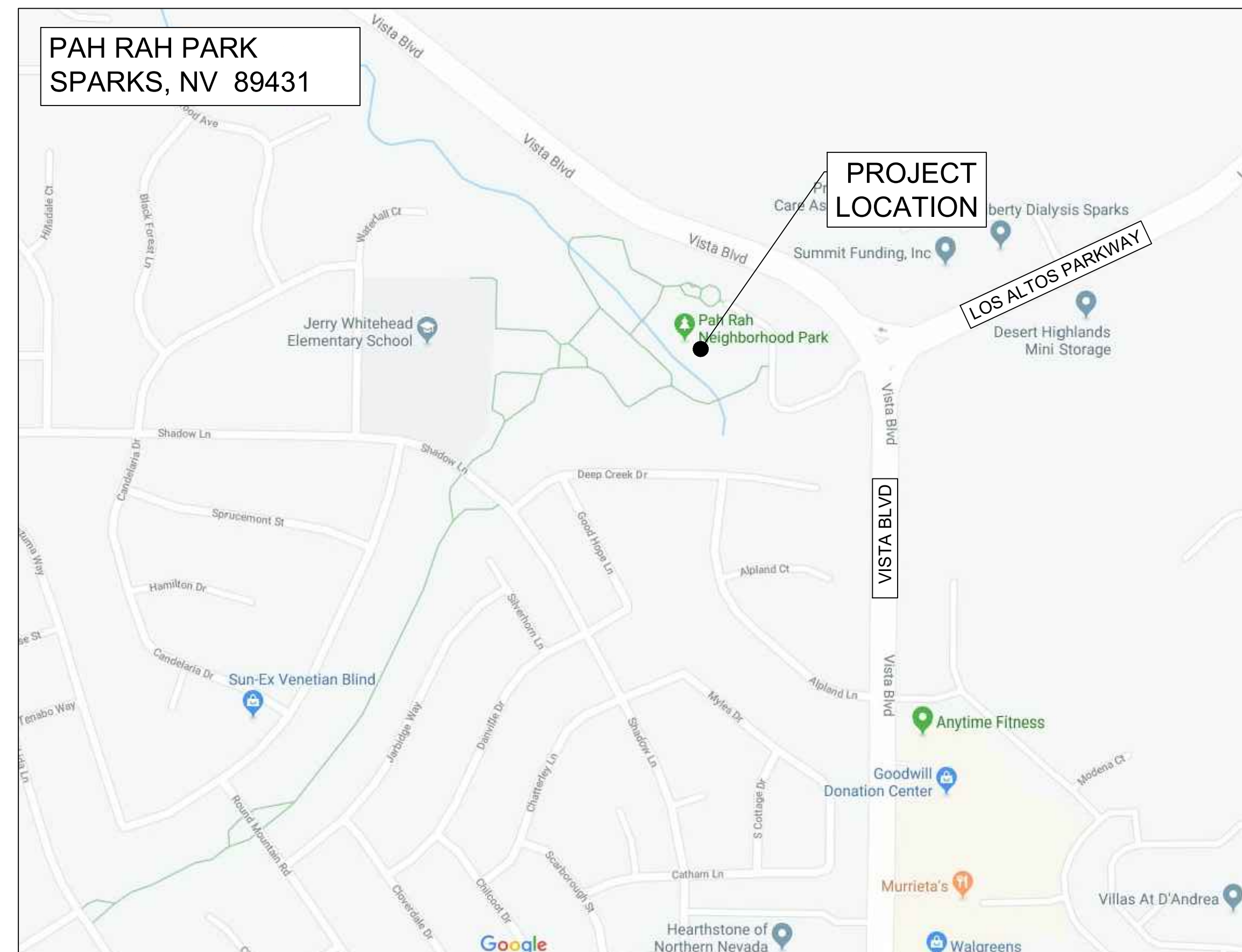
CITY OF SPARKS
98 RICHARDS WAY
SPARKS, NV 89431

CITY OF SPARKS OFFICIALS

| | |
|------------------|-----------------------|
| Ron Smith | Mayor |
| Donald Abbott | Council Member Ward 1 |
| Ed Lawson | Council Member Ward 2 |
| Paul Anderson | Council Member Ward 3 |
| Charlene Bybee | Council Member Ward 4 |
| Kristopher Dahir | Council Member Ward 5 |
| Neil C. Krutz | City Manager |

DESIGNED FOR:

CITY OF SPARKS
98 RICHARDS WAY
SPARKS, NV 89431



SHEET INDEX

- L1 TITLE SHEET
- L2 EXISTING CONDITIONS AND DEMO PLAN
- L3 PLAYGROUND IMPROVEMENT PLAN

LANDSCAPE ARCHITECT AND CPSI

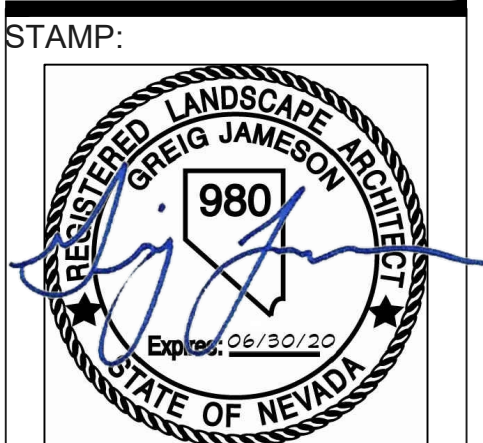
GREIG JAMESON
J & A DESIGN STUDIO
PO BOX 6780
RENO, NV 89513
gjameson@jadesignreno.com

PAH RAH PARK PLAYGROUND
IMPROVEMENT PROJECT

TITLE SHEET

DRAFTED: G&J
REVIEWED: G&J
J & A JOB NUMBER:
17-105-04

PLAN SET:
FOR BIDDING SET



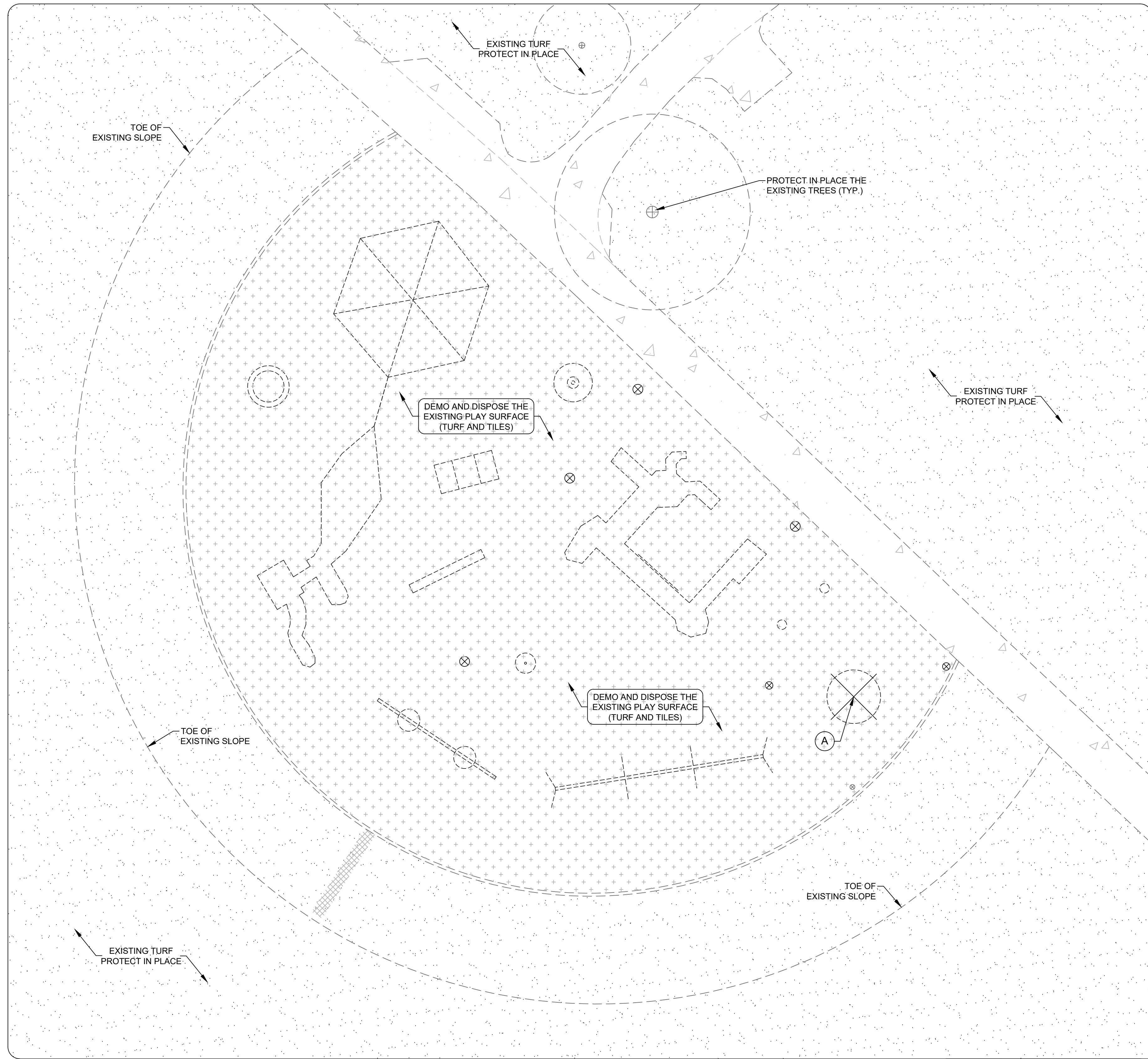
PLAN DATE: 11/08/19

REVISIONS:

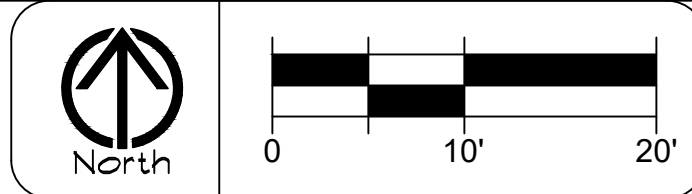
| # | DATE |
|---|------|
| | |
| | |
| | |
| | |

SCALE:
SHEET:

L1
of 3



EXISTING CONDITIONS AND DEMOLITION PLAN:



DEMOLITION LEGEND:

- NOTE: PROTECT IN PLACE ALL EXISTING PLAY EQUIPMENT THAT IS NOT SPECIFIED FOR REMOVAL. IF ANY EQUIPMENT IS DAMAGED DURING CONSTRUCTION IT IS THE RESPONSIBILITY OF THE CONTRACTOR TO REPAIR ALL EQUIPMENT AT NO ADDITIONAL COST TO THE OWNER.
- EXISTING TURF: PROTECT IN PLACE
 - EXISTING CONCRETE SIDEWALK: PROTECT IN PLACE
 - EXISTING FALL SAFETY SURFACE: DEMO AND DISPOSE OF ALL OF THE EXISTING RUBBER TILES, SYNTHETIC TURF AND FALL PROTECTION PAD.
 - EXISTING ADA MERRY-GO-ROUND: CONTRACTOR TO REMOVE THE EXISTING PIECE OF PLAY EQUIPMENT. AFTER REMOVAL CONTRACTOR TO INSTALL TYPE II BASE AGGREGATE BACKFILL MATERIAL AS NEEDED TO FILL THE AREA. COMPACT THE BASE AGGREGATE IN 4" LIFTS TO 95% RELATIVE COMPACTION. CONTRACTOR TO LEAVE THE CONCRETE FOOTING IN PLACE AND FILL WITH THE BASE AGGREGATE.

GENERAL NOTES:

- ALL WORK SHALL BE COMPLETED IN COMPLIANCE WITH THE LATEST EDITION OF THE MOST CURRENT CITY OF SPARKS STANDARDS.
- INSTALLATION OF PLAYGROUND EQUIPMENT AND/OR PROTECTIVE FALL SAFETY SURFACE TO CONFORM TO ALL PLAY AREA SAFETY RECOMMENDATIONS PER THE LATEST ADA DESIGN STANDARDS, CONSUMER PRODUCT SAFETY COMMISSION, AND ASTM STANDARDS:
 - 2010 ADA STANDARDS FOR ACCESSIBLE DESIGN
 - U.S. CONSUMER PRODUCT SAFETY COMMISSION - "PUBLIC PLAYGROUND SAFETY HANDBOOK"
 - ASTM F1232-11 IMPACT ATTENUATION OF SURFACING MATERIALS WITHIN THE USE ZONE OF PLAYGROUND EQUIPMENT
 - ASTM F1981-11 TEST METHOD FOR ACCESSIBILITY ON SAFETY SURFACING FOR PLAYGROUNDS
 - ASTM F2223-11 GUIDE FOR ASTM STANDARDS ON PLAYGROUND SURFACING
- IT IS THE RESPONSIBILITY OF THE CONTRACTOR TO OBSERVE AND VERIFY ALL CONDITIONS PRIOR TO INSTALLATION OF FALL SAFETY PROTECTIVE SURFACING. ANY DISCREPANCIES ARE TO BE BROUGHT TO THE ATTENTION OF THE CITY PRIOR TO INSTALLATION AND SHALL BE CORRECTED BY THE CONTRACTOR PRIOR TO FINAL LAYOUT OF FALL SAFETY PROTECTIVE SURFACING. ANY DISCREPANCIES NOT CORRECTED WILL BE THE RESPONSIBILITY OF THE CONTRACTOR TO CORRECT AT NO ADDITIONAL COST TO THE CITY.

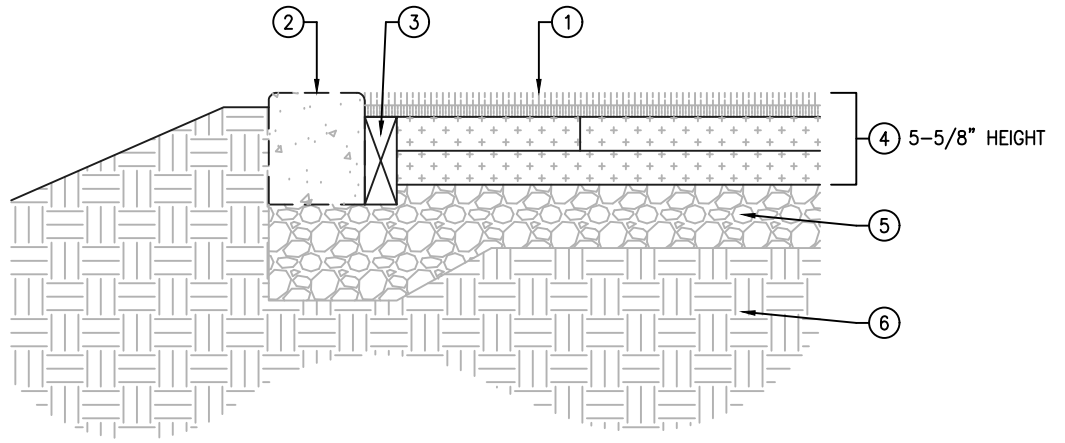
PLAY EQUIPMENT NOTES:

- ALL PLAY EQUIPMENT INSTALLATION AND/OR REPAIRS SHALL BE INSTALLED BY A CURRENT NEVADA LICENSED CONTRACTOR THAT HOLDS A CURRENT C23 LICENSE FOR PLAYGROUND INSTALLATIONS.
- INSTALL ALL PLAYGROUND EQUIPMENT OR REPLACEMENT PARTS PER MANUFACTURER'S SPECIFICATIONS AND INSTALLATION GUIDELINES.
- CONTRACTOR TO NOTIFY CARSON CITY REPRESENTATIVE OF FINAL PLAYGROUND USE ZONE LAYOUT 48 HOURS PRIOR TO CONCRETE INSTALLATION FOR REVIEW AND APPROVAL. IF THERE IS NO WRITTEN APPROVAL FROM A CITY REPRESENTATIVE AND ANY DISCREPANCIES ARE FOUND, IT WILL BE THE RESPONSIBILITY OF THE CONTRACTOR TO REMEDY THE ITEMS AT NO EXPENSE TO THE CITY.
- SEE PROJECT SPECIFICATIONS FOR ADDITIONAL NOTES.
- ALL NEW PLAY EQUIPMENT IS TO BE DIRECT BOLT SYSTEM AND WILL BE PROVIDED BY THE CITY. PURCHASING OF PLAY EQUIPMENT IS NOT A PART OF THE SCOPE OF WORK. CONTRACTOR TO COORDINATE UNLOADING, STORAGE AND INSTALLATION AS PART OF THE SCOPE OF WORK.

FALL SAFETY PROTECTIVE SURFACE NOTES:

- RUBBER TILE FALL SAFETY PROTECTIVE SURFACE SHALL BE INSTALLED PER MANUFACTURER'S RECOMMENDATIONS, RUBBER TILE MANUFACTURER'S SPECIFICATIONS, RECOMMENDATIONS, AND SAFETY INSTRUCTIONS.
- DO NOT APPLY ADHESIVE AND TILES TO CONCRETE WHEN THE CONCRETE SURFACE TEMPERATURES OR ATMOSPHERE TEMPERATURE ARE LESS THAN THE RECOMMENDED TEMPERATURE PER MANUFACTURER'S SPECIFICATIONS.
- IT IS RECOMMENDED THAT ALL PROPOSED PLAY EQUIPMENT FALL SAFETY PROTECTIVE SURFACE AND EQUIPMENT USE ZONES BE INSPECTED BY A CERTIFIED PLAYGROUND SAFETY INSPECTOR (CPSI) DURING ALL STAGES OF CONSTRUCTION TO ENSURE THAT THE PLAYGROUND WILL CONFORM TO ALL ASTM AND CPSC STANDARDS.
- PLAYGROUND MUST CONFORM TO STANDARDS AND A FINAL PLAYGROUND SAFETY AUDIT MUST BE COMPLETED PRIOR TO ACCEPTANCE BY THE CITY (SEE FINAL INSPECTION NOTE).

- 1 FINISH GRADE OF PLAY SURFACE (SYNT TURF OR RUBBER TILES)
- 2 EXISTING 6" X 7" CONCRETE CURB (PROTECT IN PLACE)
- 3 EXISTING WOOD HEADER - DEMO AND DISPOSE
- 4 EXISTING SYNTHETIC TURF AND FALL SAFETY PLAY PAD - DEMO AND DISPOSE
- 5 EXISTING BASE AGGREGATE - CONTRACTOR TO FINE GRADE AND RE-COMPACT TO 95% RELATIVE COMPACTION PRIOR TO INSTALLATION OF NEW BASE AGGREGATE.
- 6 EXISTING NATIVE SOILS



1 EXISTING SYNTHETIC TURF DEMOLITION DETAIL:
NOT TO SCALE

GENERAL DIMENSIONING NOTES:

- LAYOUT OF PLAY AREA PROTECTIVE FALL SAFETY SURFACE TO CONFORM TO ALL PLAY AREA SAFETY RECOMMENDATIONS PER THE FOLLOWING LATEST ADA DESIGN STANDARDS, CONSUMER PRODUCT SAFETY COMMISSION, AND ASTM STANDARDS:
 - 2010 ADA STANDARDS FOR ACCESSIBLE DESIGN
 - U.S. CONSUMER PRODUCT SAFETY COMMISSION - "PUBLIC PLAYGROUND SAFETY HANDBOOK"
 - ASTM F1232-11 IMPACT ATTENUATION OF SURFACING MATERIALS WITHIN THE USE ZONE OF PLAYGROUND EQUIPMENT
 - ASTM F1981-11 TEST METHOD FOR ACCESSIBILITY ON SAFETY SURFACING FOR PLAYGROUNDS
 - ASTM F2223-11 GUIDE FOR ASTM STANDARDS ON PLAYGROUND SURFACING
- IT IS THE RESPONSIBILITY OF THE CONTRACTOR TO OBSERVE AND VERIFY ALL CONDITIONS PRIOR TO INSTALLATION OF FALL SAFETY PROTECTIVE SURFACING. ANY DISCREPANCIES ARE TO BE BROUGHT TO THE ATTENTION OF THE CITY PRIOR TO INSTALLATION AND SHALL BE CORRECTED BY THE CONTRACTOR PRIOR TO FINAL LAYOUT OF FALL SAFETY PROTECTIVE SURFACING. ANY DISCREPANCIES NOT CORRECTED WILL BE THE RESPONSIBILITY OF THE CONTRACTOR TO CORRECT AT NO ADDITIONAL COST TO THE CITY.

GENERAL CONCRETE NOTES:

- CONTRACTOR TO FIELD VERIFY EXISTING SUBGRADE SOILS FOLLOWING PLAY BARK SAFETY SURFACE REMOVAL. CONTRACTOR TO ENSURE A 4" MINIMUM DEPTH OF COMPACTED BASE AGGREGATE UNDER ALL CONCRETE. EXCAVATE ADDITIONAL SUBGRADE SOILS IF NEEDED TO MEET THE 4" MINIMUM DEPTH. IF THE EXISTING SUBGRADE DEPTH REQUIRES ADDITIONAL FILL MATERIAL CONTRACTOR SHALL INSTALL TYPE II BASE AGGREGATE AS REQUIRED TO FILL THE AREAS TO MEET PROPOSED ELEVATIONS. INSTALL BASE AGGREGATE IN 4" LIFTS AND COMPACT TO 95% RELATIVE COMPACTION.

GENERAL CONCRETE:

- MIX DESIGN IS THE SAME FOR ALL CONCRETE WORK.
- SEE CONCRETE SPECIFICATION SECTION FOR ADDITIONAL INFORMATION.
- ALL REMOVED CONCRETE SHALL BE PROPERLY DISPOSED OF LEGALLY OFF-SITE.
- CURE SHALL CONFORM TO 889PC (LATEST EDITION).
- EXPANSION JOINTS TO BE INSTALLED ON ALL CONCRETE FLATWORK PER CITY OF SPARKS CURRENT STANDARDS.

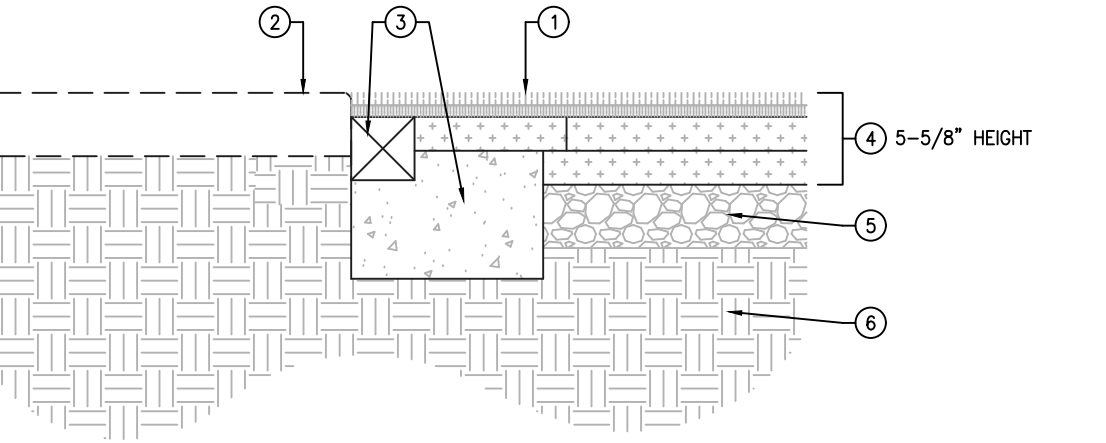
SIDEWALK CONCRETE NOTES:

- FINISH CONCRETE TO BE BROOM FINISH FOR CONCRETE SIDEWALK AND CONCRETE SIDEWALK WITH THICKENED EDGE. DO NOT INSTALL BROOM FINISH ON CONCRETE PAD BELOW RUBBER TILE PROTECTIVE SURFACING.
- ALLOW CONCRETE TO CURE FOR A MINIMUM OF 14 DAYS (OR PER MANUFACTURER'S SPECIFICATIONS) BEFORE PLACEMENT OF TILES OR TILE ADHESIVE APPLICATION.
- FOR CONCRETE FLATWORK BELOW RUBBER TILE FALL SAFETY PROTECTIVE SURFACE, SAW CUT OR TROUCEL JOINTS 1" DEEP (1" TO 8" ON CENTER). SEE CONCRETE PAD CONTROL JOINT DETAIL.
- INSTALL SIKAFLEX SELF SEALING CONCRETE SEALANT IN ALL CONCRETE JOINTS ON THE CONCRETE FLATWORK LOCATED BELOW THE RUBBER TILE FALL SAFETY SURFACE. SEE DETAIL 3 ON SHEET L2.
- FINISH CONCRETE ON FLATWORK UNDER RUBBER TILE FALL SAFETY PROTECTIVE SURFACE TO BE SMOOTH TROUCEL FINISH. DO NOT BROOM FINISH.
- INSTALL PLASTIC SHEETING AROUND ALL PLAY EQUIPMENT POSTS OR COMPONENTS THAT MAY ENCOUNTER CONCRETE SPLASH, PRIOR TO CONCRETE INSTALLATION.
- WASH ALL CONCRETE SPLASH AND DUST FROM THE EQUIPMENT UPON COMPLETION.
- SEE CONCRETE SPECIFICATIONS SECTION FOR ADDITIONAL INFORMATION.

GENERAL DRAINAGE NOTES:

1. CONTRACTOR TO SLOPE ALL CONCRETE FLATWORK AND RUBBER TILE SURFACE AT A MINIMUM SLOPE OF 1% (OR AS SPECIFIED) TO ALL DRAIN INLETS AND DRAIN CATCH BASINS.
2. CONTRACTOR TO SLOPE THE 8CH 40 PVC DRAIN PIPE MINIMUM 1% TO THE DRAIN SUMP LOCATION.

- 1 FINISH GRADE OF PLAY SURFACE (SYNT TURF OR RUBBER TILES)
- 2 EXISTING CONCRETE SIDEWALK (PROTECT IN PLACE)
- 3 EXISTING WOOD HEADER AND CONCRETE FOOTING - DEMO AND DISPOSE
- 4 EXISTING SYNTHETIC TURF AND FALL SAFETY PLAY PAD - DEMO AND DISPOSE
- 5 EXISTING BASE AGGREGATE - CONTRACTOR TO FINE GRADE AND RE-COMPACT TO 95% RELATIVE COMPACTION PRIOR TO INSTALLATION OF NEW BASE AGGREGATE.
- 6 EXISTING NATIVE SOILS



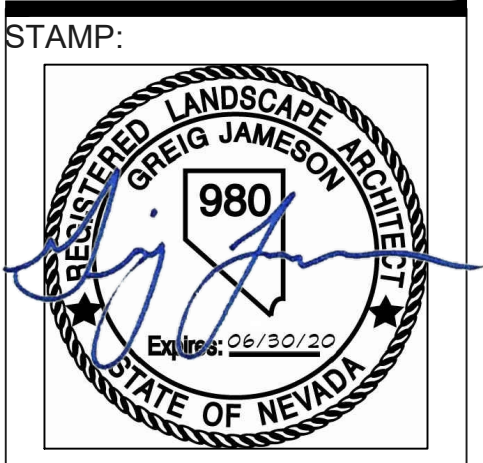
CITY OF SPARKS
98 RICHARDS WAY
SPARKS, NV 89431

PAH RAH PARK PLAYGROUND
IMPROVEMENT PROJECT
EXISTING CONDITIONS AND DEMOLITION PLAN

DRAFTED: G&J
REVIEWED: G&J

J & A JOB NUMBER:
17-105-04

PLAN SET:
FOR BIDDING SET



PLAN DATE: 11/08/19

REVISIONS:

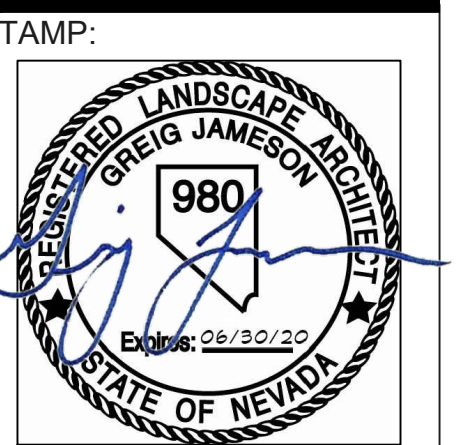
| # | DATE |
|---|------|
| | |
| | |
| | |
| | |

SCALE:
SHEET:

DRAFTED: GSJ REVIEWED: GSJ

J & A JOB NUMBER:
 17-105-04

PLAN SET:
 FOR BIDDING SET



PLAN DATE: 11/08/19

REVISIONS:

| # | DATE |
|---|------|
| | |
| | |
| | |
| | |
| | |

SCALE:
 SHEET:

PLAYGROUND IMPROVEMENT LEGEND:

NOTE: PROTECT IN PLACE ALL EXISTING PLAY EQUIPMENT THAT IS NOT SPECIFIED FOR REMOVAL. IF ANY EQUIPMENT IS DAMAGED DURING CONSTRUCTION IT IS THE RESPONSIBILITY OF THE CONTRACTOR TO REPAIR ALL EQUIPMENT AT NO ADDITIONAL COST TO THE OWNER.

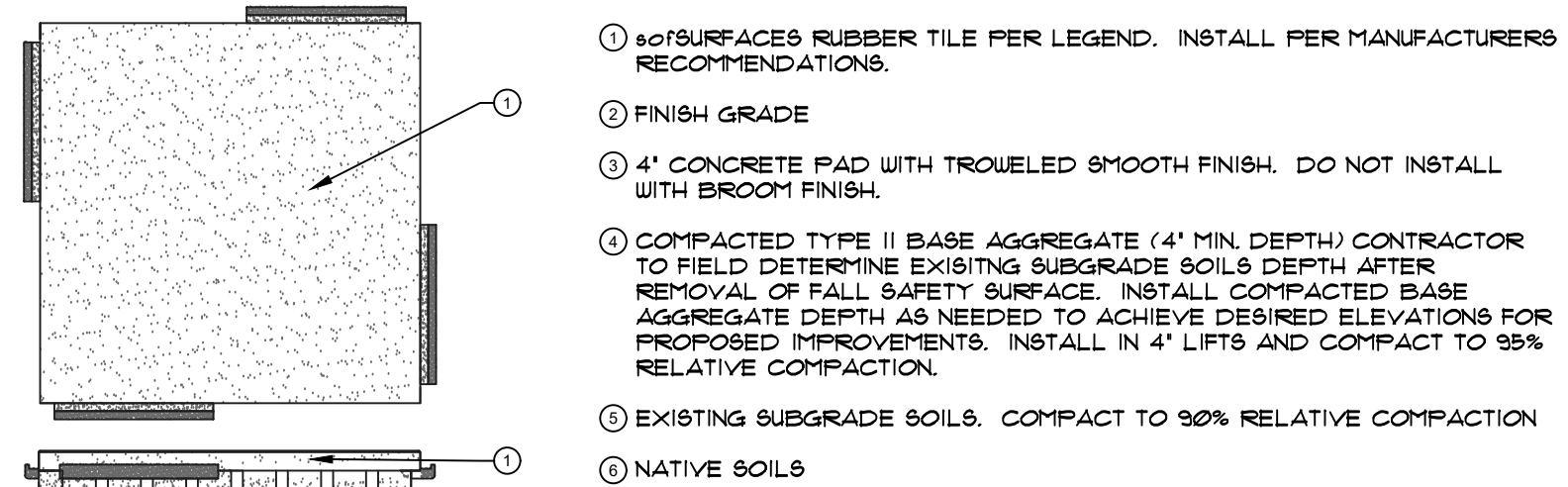
RUBBER TILE FALL SAFETY SURFACE: sofSURFACES, DURASAFE PREMIUM SERIES, 2' X 2' INTERLOCKING RUBBER TILES. COLOR TO BE 'SANDY LANE' WITH A 10' RATED MAXIMUM FALL HEIGHT (5.00' HEIGHT). CONTRACTOR TO PROVIDE 2% EXTRA AND TURN OVER TO THE CITY AT THE COMPLETION OF CONSTRUCTION.

FRENCH DRAIN: CONTRACTOR TO FURNISH AND INSTALL 4" ADS PERFORATED DRAIN PIPE WITH 1-1/2" DRAIN ROCK BACKFILL. WRAP ALL SIDES OF THE FRENCH DRAIN WITH LANDSCAPE FABRIC. INSTALL PIPE WITH MINIMUM 1.0% SLOPE TO DRAIN SUMP LOCATION.

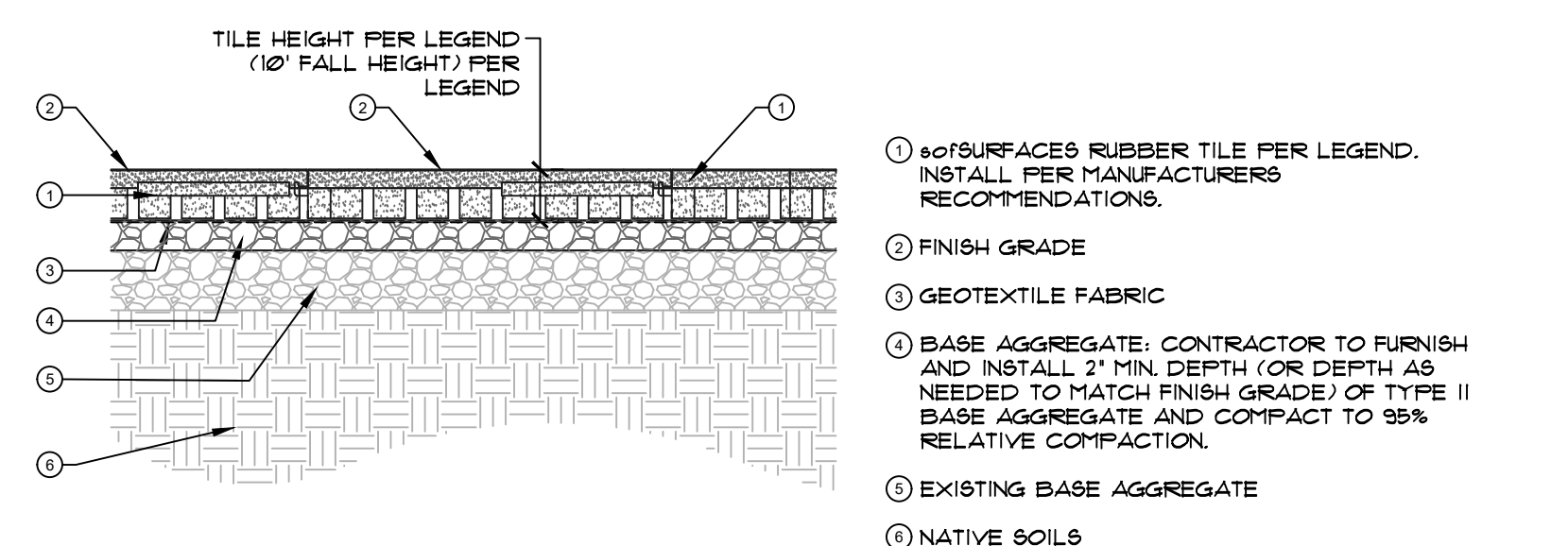
SOLID DRAIN PIPE: CONTRACTOR TO FURNISH AND INSTALL 4" PVC SCHEDULE 40 SOLID DRAIN PIPE AS SHOWN. INSTALL PIPE WITH MINIMUM 1.0% SLOPE TO DRAIN SUMP LOCATION. FOR SOLID PIPE LOCATED IN THE EXISTING TURF, CONTRACTOR TO REMOVE EXISTING TURF, INSTALL THE DRAIN PIPE, BACKFILL WITH NATIVE SOILS COMPACTING THE SOILS IN 4" LIFTS TO 90% RELATIVE COMPACTION. INSTALL A 2" DEPTH OF DOUBLE MIX TOPSOIL AND THEN RE-INSTALL THE EXISTING TURF.

FG - EXISTING FINISH GRADE
 TEC - TOP OF EXISTING CONCRETE

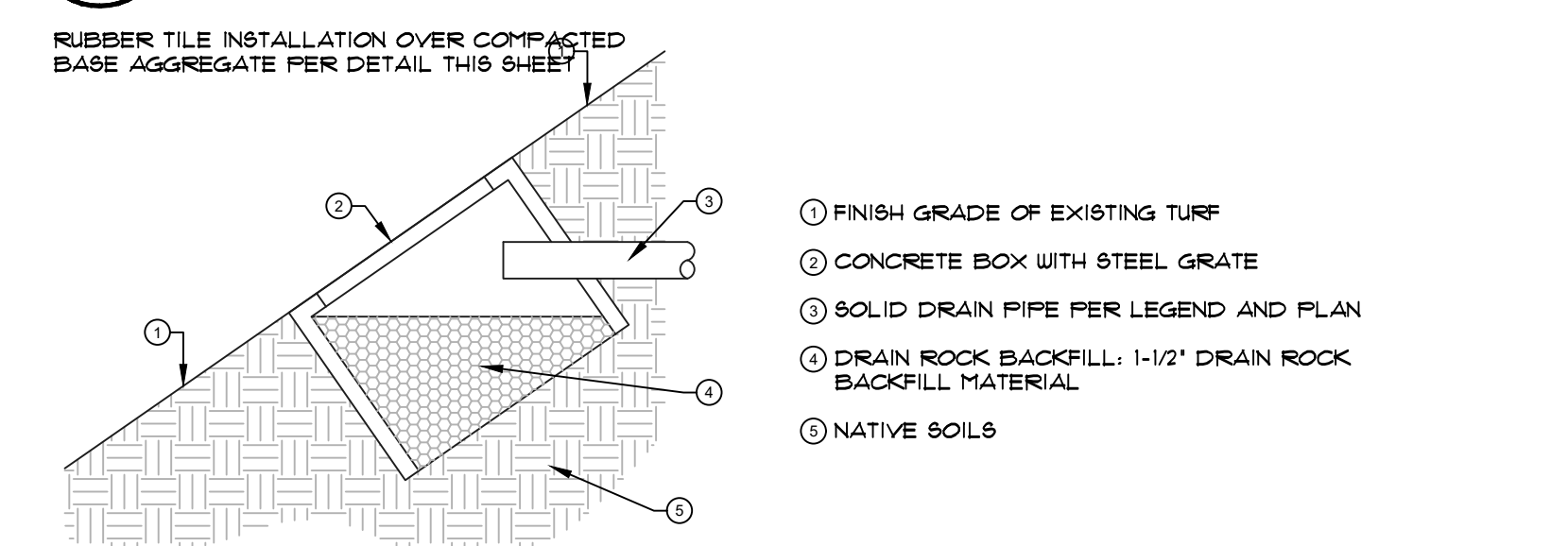
NOTE: CONTRACTOR TO FIELD VERIFY EXISTING SUBGRADE SOILS FOLLOWING PLAY BARK SAFETY SURFACE REMOVAL. CONTRACTOR TO ENSURE A 4" MINIMUM DEPTH OF COMPACTED BASE AGGREGATE UNDER ALL CONCRETE. EXCAVATE ADDITIONAL SUBGRADE SOILS IF NEEDED TO MEET THE 4" MINIMUM DEPTH. IF THE EXISTING SUBGRADE DEPTH REQUIRES ADDITIONAL FILL MATERIAL CONTRACTOR SHALL INSTALL BASE AGGREGATE AS REQUIRED TO FILL THE AREAS TO MEET PROPOSED ELEVATIONS. INSTALL BASE AGGREGATE IN 4" LIFTS AND COMPACT TO 95% RELATIVE COMPACTION.



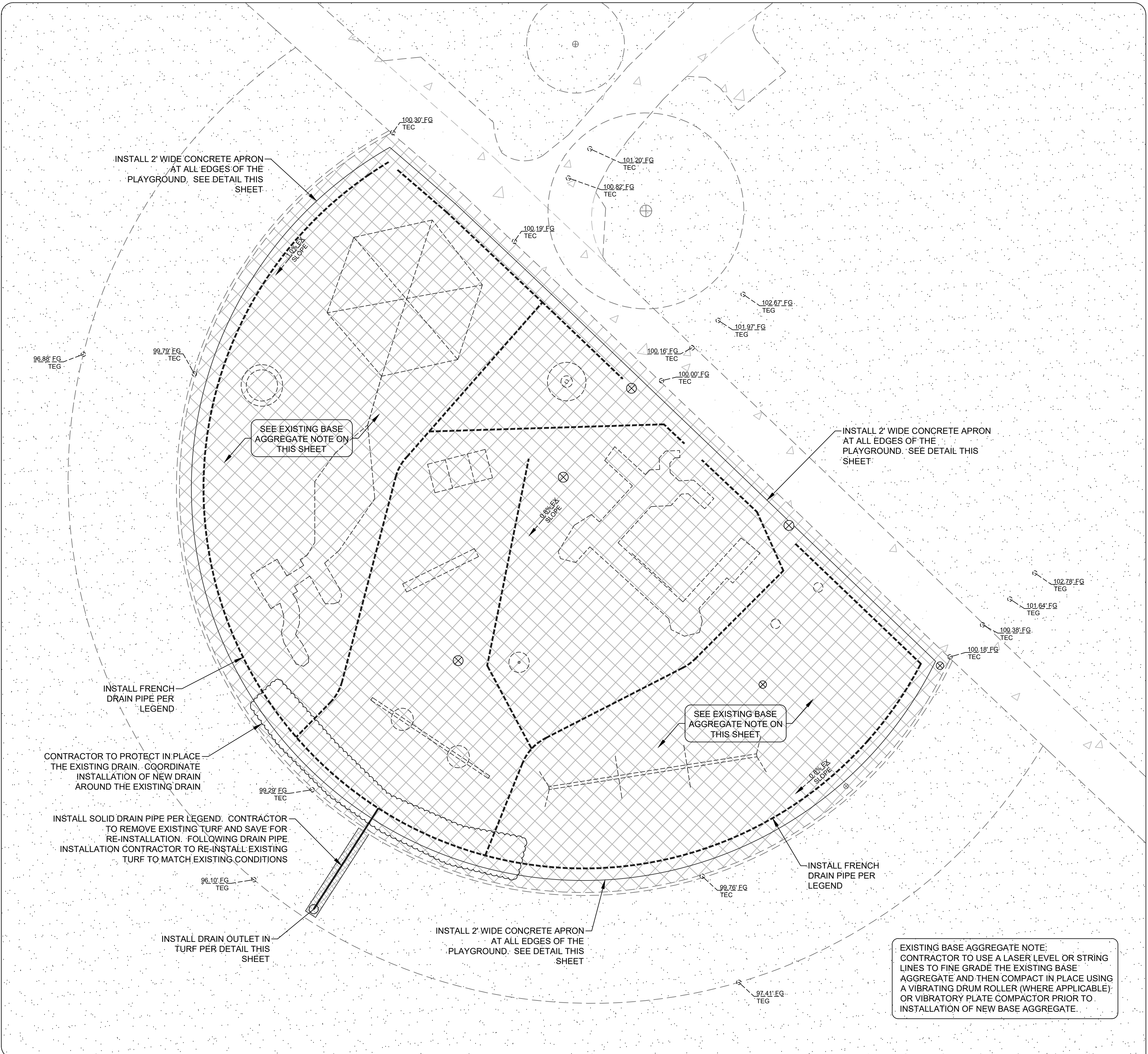
4 RUBBER TILE INSTALLATION DETAIL AT 2' CONCRETE APRON:
 NOT TO SCALE



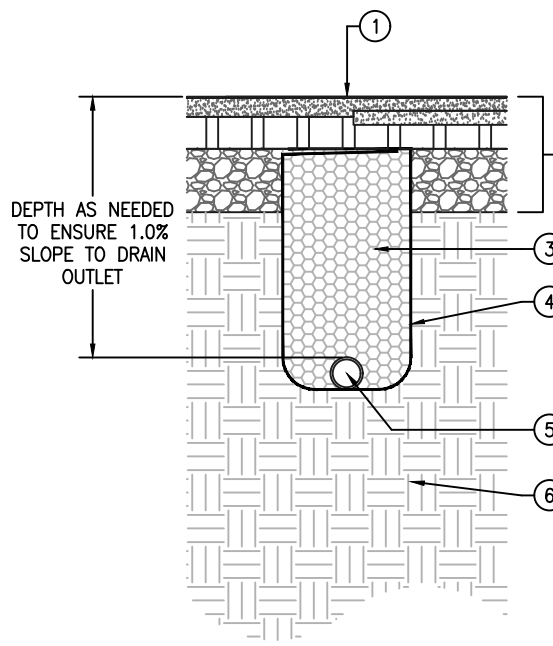
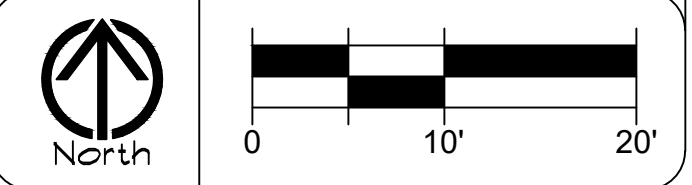
5 RUBBER TILE INSTALLATION DETAIL OVER BASE AGGREGATE:
 NOT TO SCALE



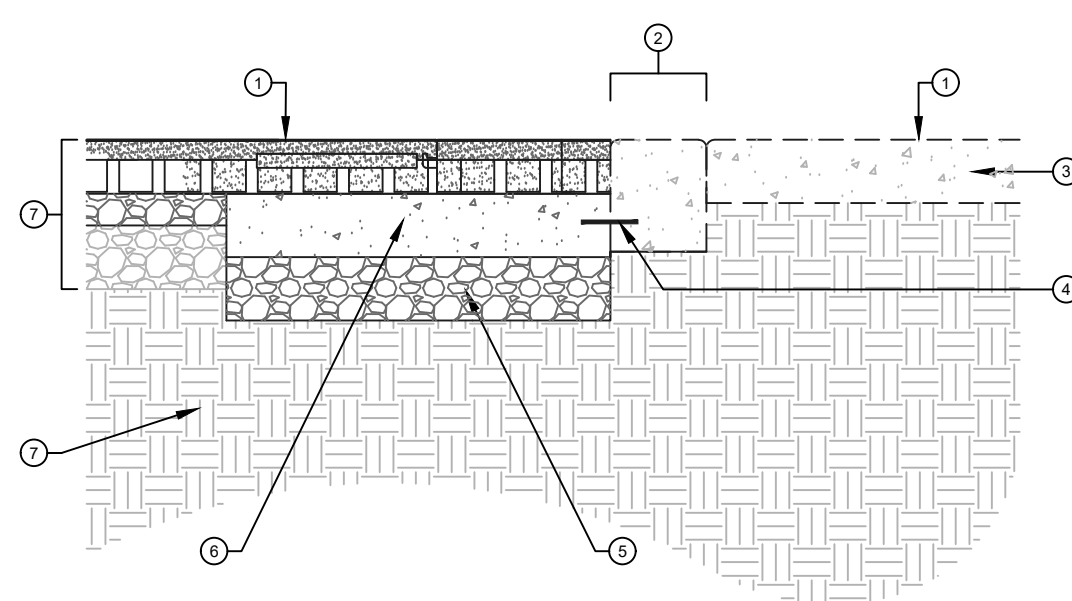
6 DRAIN OUTLET DETAIL:
 NOT TO SCALE



PLAYGROUND IMPROVEMENT PLAN:



2 FRENCH DRAIN DETAIL:
 NOT TO SCALE



3 2' CONCRETE APRON DETAIL:
 NOT TO SCALE