



## **ADDENDUM #1**

### **WINGFIELD HILLS RD STORM DRAIN IMPROVEMENTS**

**BID #18/19-022**

**BIDS DUE NO LATER THAN: 1:45 PM ON MAY 29, 2019**

**PUBLIC BID OPENING: 2:00 PM ON MAY 29, 2019**

This addendum is to notify all potential proposers of clarifications made to the Bid documents as stated below.

#### **GENERAL NOTES:**

1. Sheets C-2, C-5, and C-6 have been updated to reflect changes to the detention pond grading and culvert headwall construction. Updated sheets are attached as Pages 3-5 of this addendum.
2. The project CAD files are available for download as a part of this addendum. The accompanying zip files may be found at the same City website where original bid documents and this addendum were downloaded. There are two (2) zip files available.

The accompanying zip files are supplied as a matter of courtesy and are in no way to be taken as appurtenant to, associated with or as a replacement of copies of the officially provided project drawings. The data is provided "as is" without warranty of any kind either expressed or implied. Any person(s) or organization(s) making use of or relying upon this data, is responsible for confirming its accuracy and completeness. These files do not include a professional surveyor's/engineer's stamp/signature and only drawings with such stamp/signature are to be considered as true and final. Axion Engineering, LLC is not responsible for edited or reproduced versions of this digital data. The files supplied shall not be shared with any other entities without written consent from Axion Engineering, LLC.

#### **RESPONSES TO QUESTIONS:**

1. Can the materials stripped within the work area be placed in the fill berm on the lower side of the roadway?
  - a. Response: Strippings shall not be placed in the berm or the road. Screened 4" minus native material is acceptable. Bidders are responsible for takeoffs and import or export of material(s) as required. Import, if required, shall meet Orange Book Class "C" Backfill requirements or better.
2. The grading plans provided do not show the oversized boulders within the work area. Are the rocks required to leave the site or can they be moved outside the work area?
  - a. The oversized boulders will remain on site. A note on plan sheets C-2 and C-4 denotes placement of the boulders.

Please note and adjust your bid according to the revisions, additions, deletions, clarifications or modifications as presented on this Addendum #1, which are made a part of this bid. NOTE: To avoid disqualification, this Addendum 1 (and any other addenda) must be signed by an authorized representative of the bidding firm in the space provided and must be submitted with your firm's sealed proposal. Failure to return this addendum, duly signed, may be cause for rejection of the bid. ALL ADDENDA SHOULD BE SIGNED AND PLACED IN SEQUENTIAL ORDER AND ATTACHED TO THE FRONT OF THE BID PACKAGE, COMPLETE WITH ALL REQUIRED DOCUMENTS.

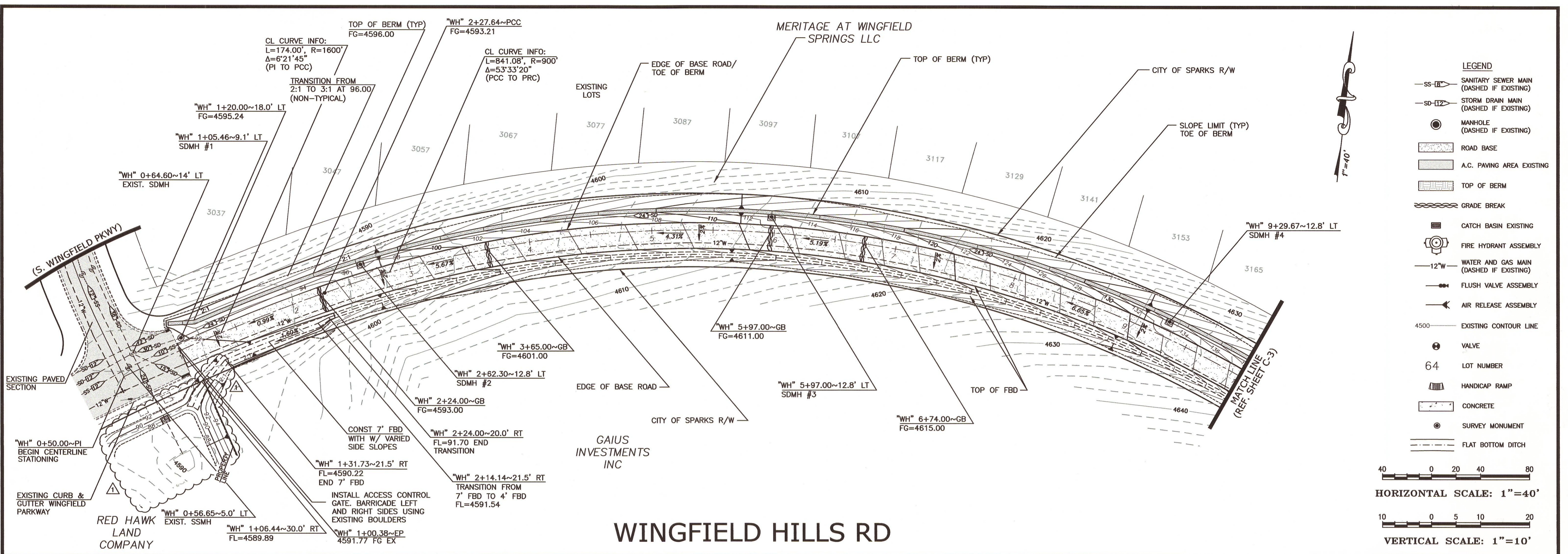
\_\_\_\_\_  
CONTRACTOR BUSINESS NAME

\_\_\_\_\_  
Dan Marran, C.P.M., CPPO  
Contracts and Risk Manager

X \_\_\_\_\_  
Authorized Signature

May 23, 2019

\_\_\_\_\_  
Printed Name of Person Signing

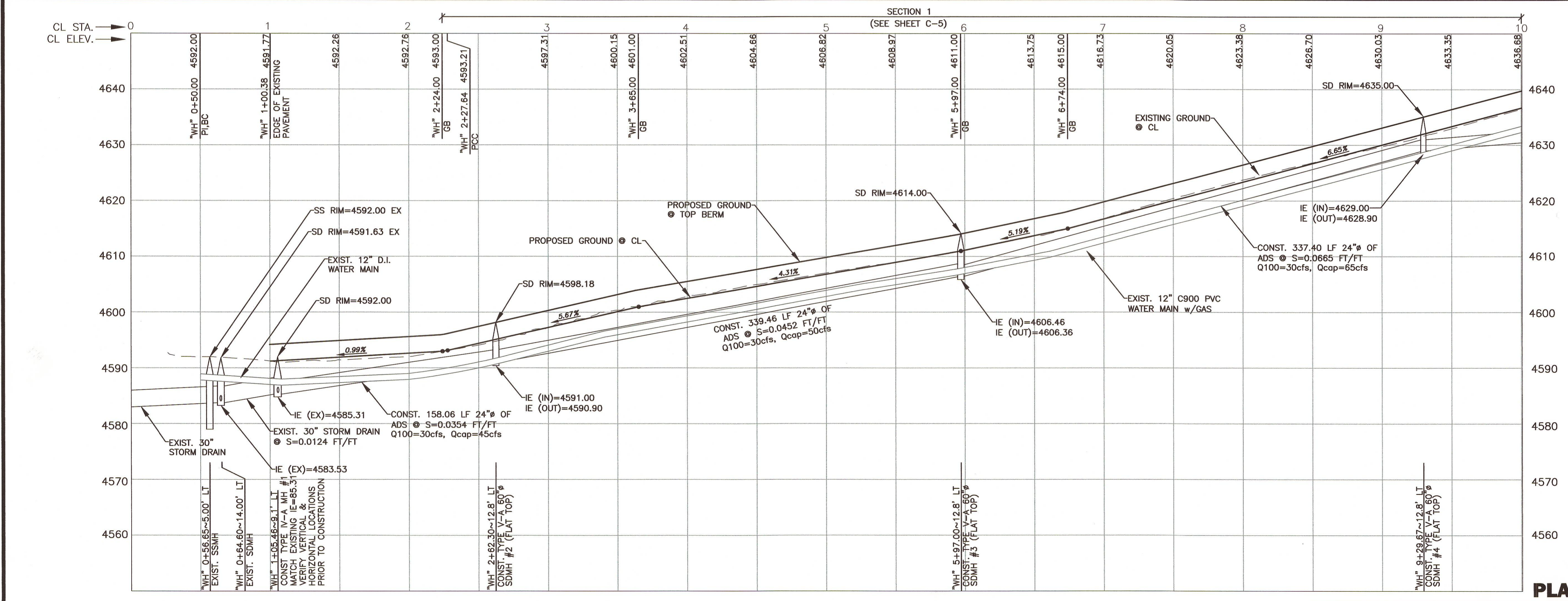


**LEGEND**

- SS (Dashed) - SANITARY SEWER MAIN (DASHED IF EXISTING)
- SD (Dashed) - STORM DRAIN MAIN (DASHED IF EXISTING)
- (Dashed) - MANHOLE (DASHED IF EXISTING)
- ▨ - ROAD BASE
- ▨ - A.C. PAVING AREA EXISTING
- - TOP OF BERM
- - GRADE BREAK
- - CATCH BASIN EXISTING
- ⊙ - FIRE HYDRANT ASSEMBLY
- 12" W (Dashed) - WATER AND GAS MAIN (DASHED IF EXISTING)
- ⊙ - FLUSH VALVE ASSEMBLY
- ⊙ - AIR RELEASE ASSEMBLY
- 4500 - EXISTING CONTOUR LINE
- ⊙ - VALVE
- 64 - LOT NUMBER
- ▨ - HANDICAP RAMP
- ▨ - CONCRETE
- ⊙ - SURVEY MONUMENT
- - - - - FLAT BOTTOM DITCH

HORIZONTAL SCALE: 1"=40'

VERTICAL SCALE: 1"=10'



5/21/19 BID ADDENDUM #1  
REVISED POND GRADING DUE TO CONFLICT WITH SIDEWALK AND ELECTRICAL VAULT & PAD

**revisions**

|                         |  |
|-------------------------|--|
| 5/21/19 BID ADDENDUM #1 |  |
|                         |  |
|                         |  |
|                         |  |
|                         |  |
|                         |  |
|                         |  |
|                         |  |

drawn: KM  
checked: GKG  
date: MAY 2019  
scale: 1"=40'  
project no: 17020

**811**  
Know what's below.  
Call before you dig.

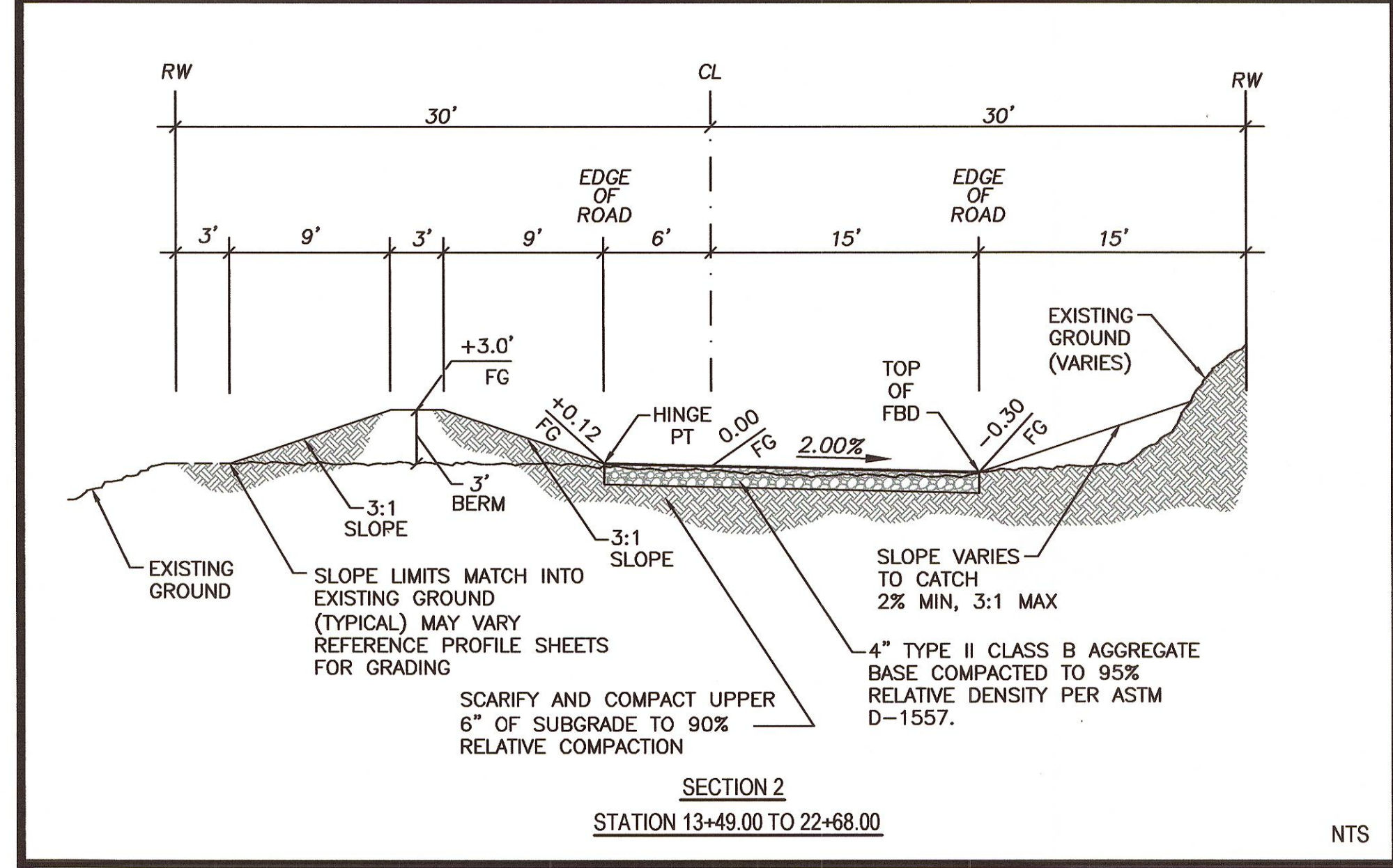
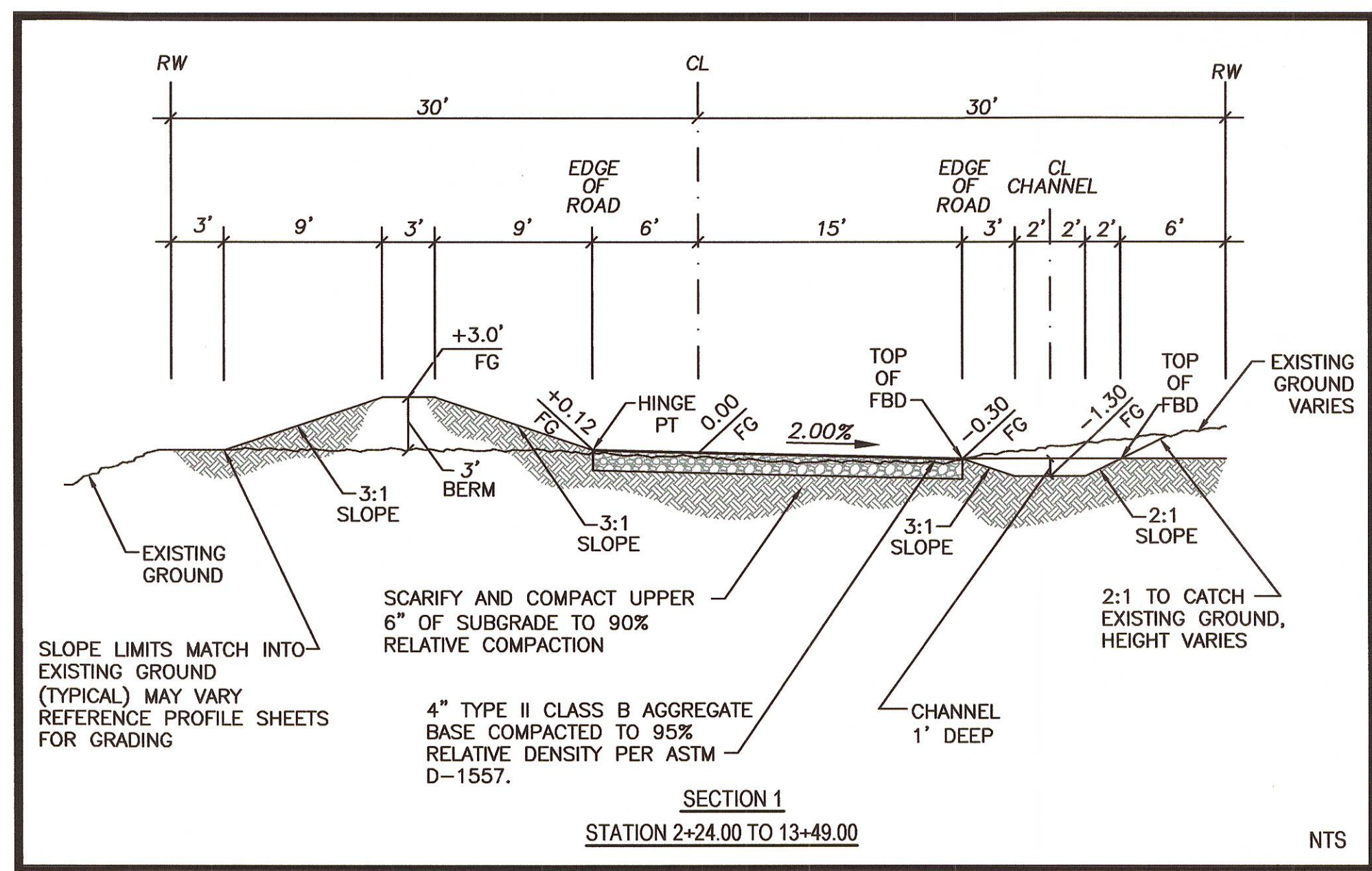
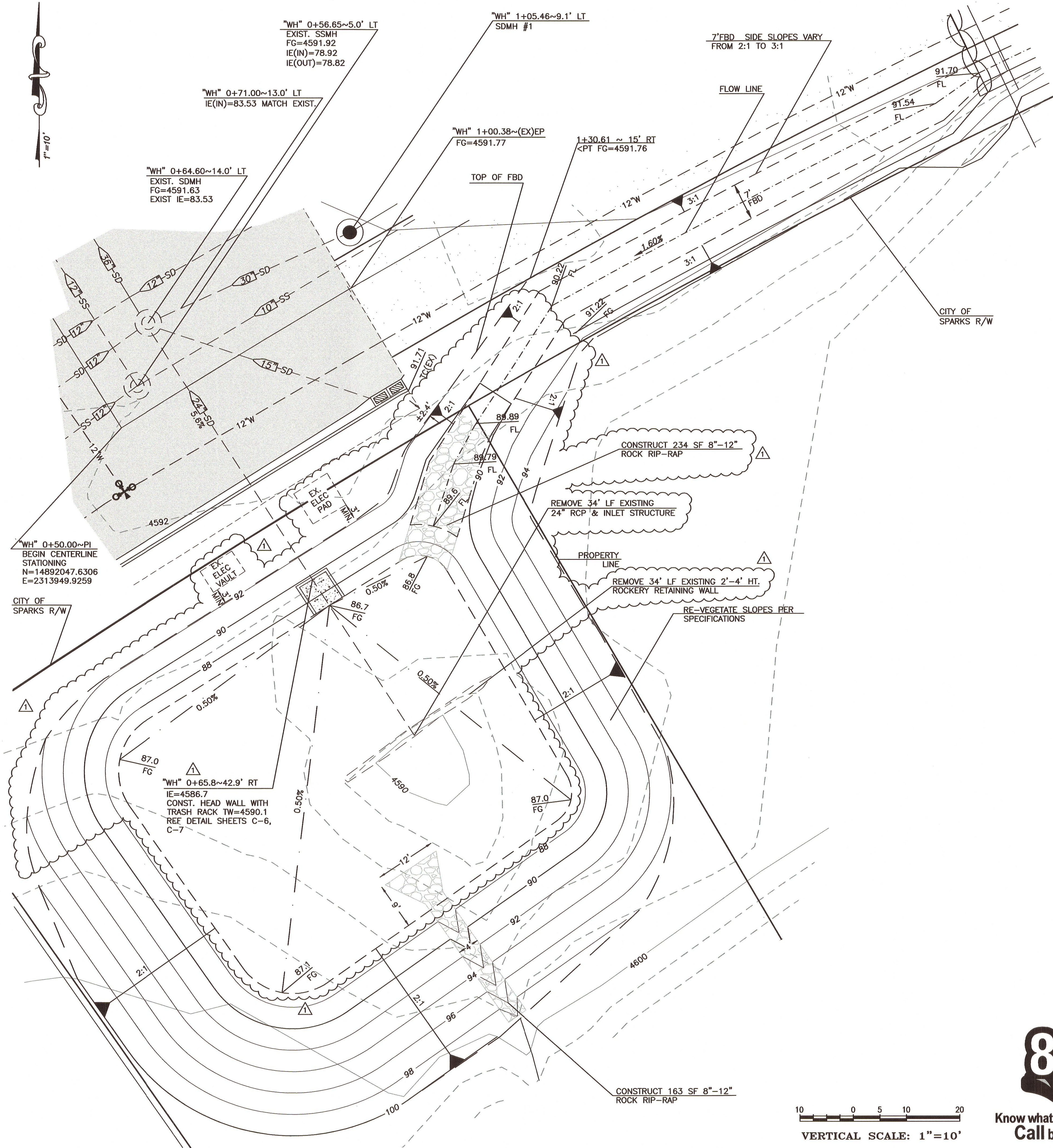
**PLAN AND PROFILE**

**AXION ENGINEERING**  
Civil Engineering - Land Development  
681 EDISON WAY - RENO, NEVADA, 89502  
PH 775-771-5654 / FX 775-858-9861

**CITY OF SPARKS**  
**WINGFIELD HILLS RD**  
**DRAINAGE IMPROVEMENTS**  
**SPARKS, NEVADA**

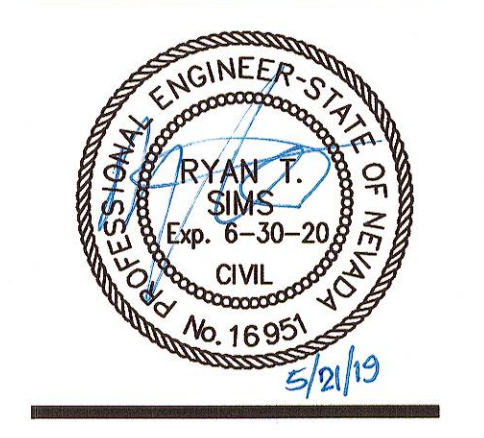
**C-2**

OF 7



5/21/19 BID ADDENDUM #1  
 REVISED POND GRADING DUE TO CONFLICT WITH SIDEWALK AND ELECTRICAL VAULT & PAD, ADDED REMOVAL OF EXISTING ROCKERY WALL IN POND

- LEGEND**
- SS-18 SANITARY SEWER MAIN (DASHED IF EXISTING)
  - SD-12 STORM DRAIN MAIN (DASHED IF EXISTING)
  - MANHOLE (DASHED IF EXISTING)
  - ROAD BASE
  - A.C. PAVING AREA EXISTING
  - TOP OF BERM
  - GRADE BREAK
  - CATCH BASIN EXISTING
  - FIRE HYDRANT ASSEMBLY
  - WATER AND GAS MAIN (DASHED IF EXISTING)
  - FLUSH VALVE ASSEMBLY
  - AIR RELEASE ASSEMBLY
  - 4500 EXISTING CONTOUR LINE
  - VALVE
  - 64 LOT NUMBER
  - HANDICAP RAMP
  - CONCRETE
  - SURVEY MONUMENT
  - FLAT BOTTOM DITCH

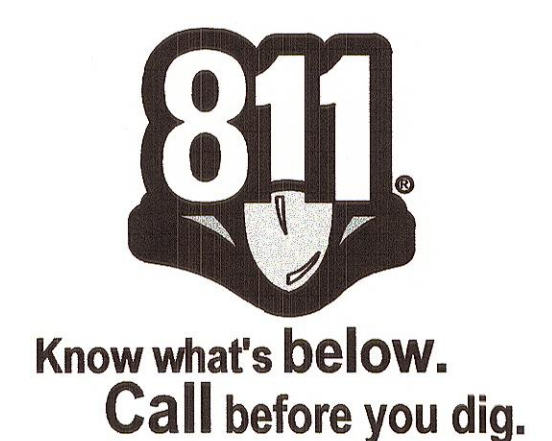
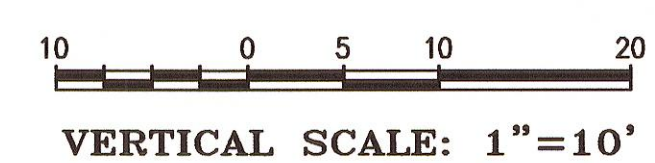


**CITY OF SPARKS  
 WINGFIELD HILLS RD  
 DRAINAGE IMPROVEMENTS  
 SPARKS, NEVADA**

**revisions**

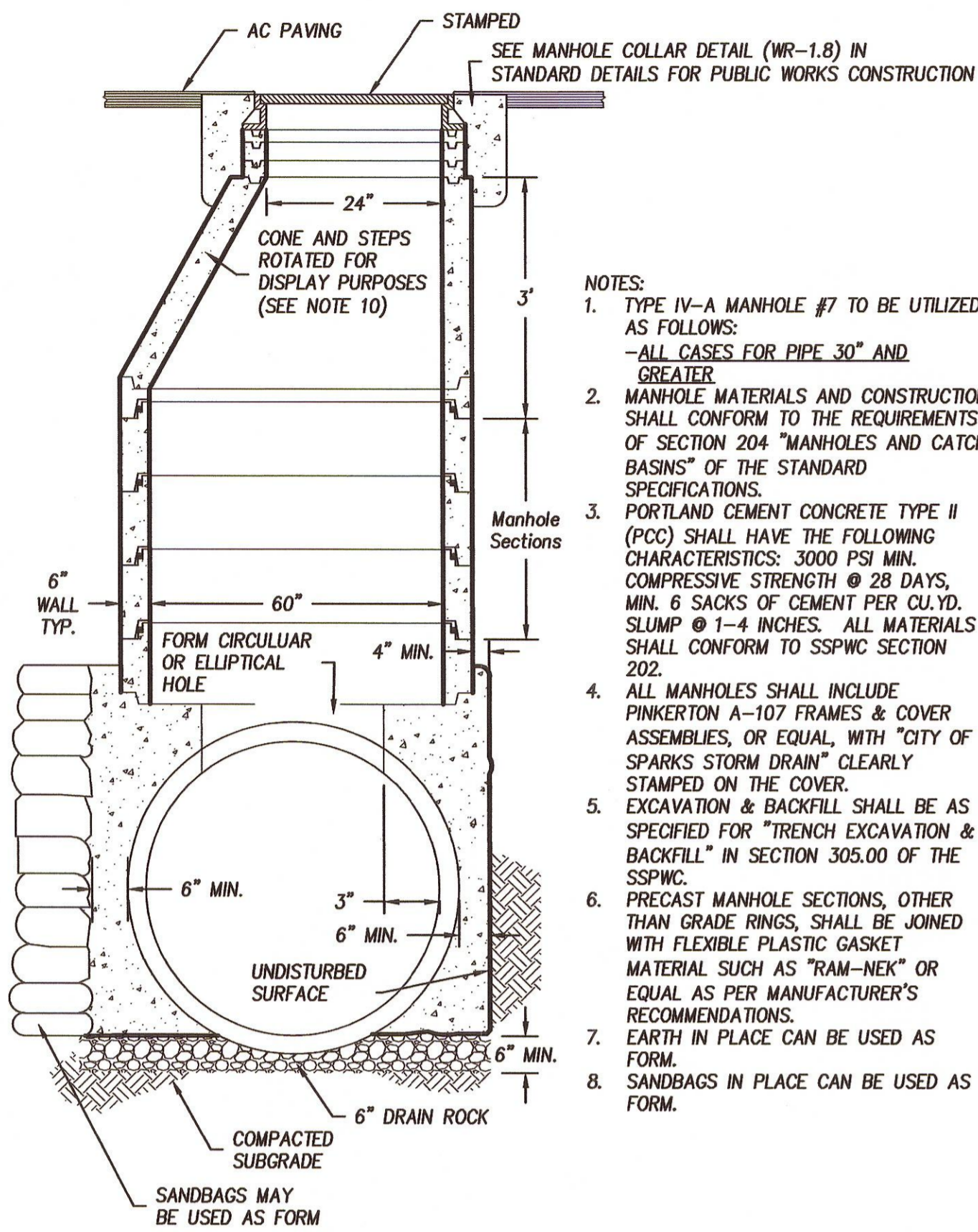
|   |                         |
|---|-------------------------|
| Δ | 5/21/19 BID ADDENDUM #1 |
|   |                         |
|   |                         |
|   |                         |
|   |                         |
|   |                         |
|   |                         |
|   |                         |
|   |                         |
|   |                         |
|   |                         |

**drawn:** KM  
**checked:** GKG  
**date:** MAY 2019  
**scale:** 1"=10'  
**project no:** 17020



**DETENTION POND GRADING PLAN**

MANHOLE #7 HAS MODIFIED COLLAR & LID DUE TO SHALLOW DEPTH  
(NO CONICAL SECTION)



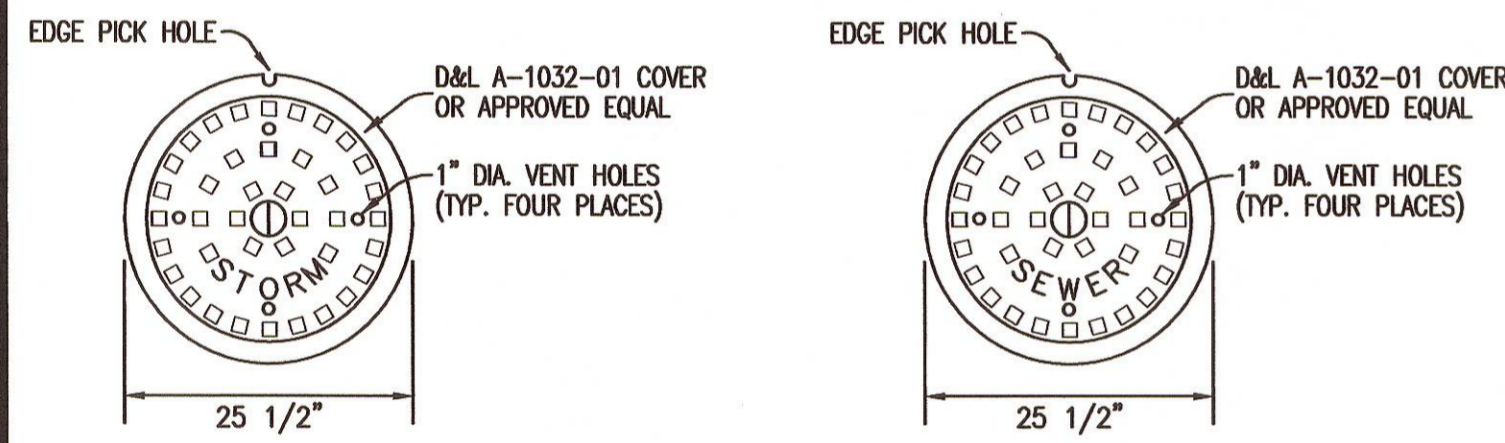
- NOTES:**
- TYPE IV-A MANHOLE #7 TO BE UTILIZED AS FOLLOWS:  
- ALL CASES FOR PIPE 30" AND GREATER
  - MANHOLE MATERIALS AND CONSTRUCTION SHALL CONFORM TO THE REQUIREMENTS OF SECTION 204 "MANHOLES AND CATCH BASINS" OF THE STANDARD SPECIFICATIONS.
  - PORTLAND CEMENT CONCRETE TYPE II (PCC) SHALL HAVE THE FOLLOWING CHARACTERISTICS: 3000 PSI MIN. COMPRESSIVE STRENGTH @ 28 DAYS, MIN. 6 SACKS OF CEMENT PER CU.YD. SLUMP @ 1-4 INCHES. ALL MATERIALS SHALL CONFORM TO SSPWC SECTION 202.
  - ALL MANHOLES SHALL INCLUDE PINKERTON A-107 FRAMES & COVER ASSEMBLIES, OR EQUAL, WITH "CITY OF SPARKS STORM DRAIN" CLEARLY STAMPED ON THE COVER.
  - EXCAVATION & BACKFILL SHALL BE AS SPECIFIED FOR "TRENCH EXCAVATION & BACKFILL" IN SECTION 305.00 OF THE SSPWC.
  - PRECAST MANHOLE SECTIONS, OTHER THAN GRADE RINGS, SHALL BE JOINED WITH FLEXIBLE PLASTIC GASKET MATERIAL SUCH AS "RAM-NEK" OR EQUAL AS PER MANUFACTURER'S RECOMMENDATIONS.
  - EARTH IN PLACE CAN BE USED AS FORM.
  - SANDBAGS IN PLACE CAN BE USED AS FORM.

MANHOLE TYPE IV-A

GENERAL MANHOLE NOTES

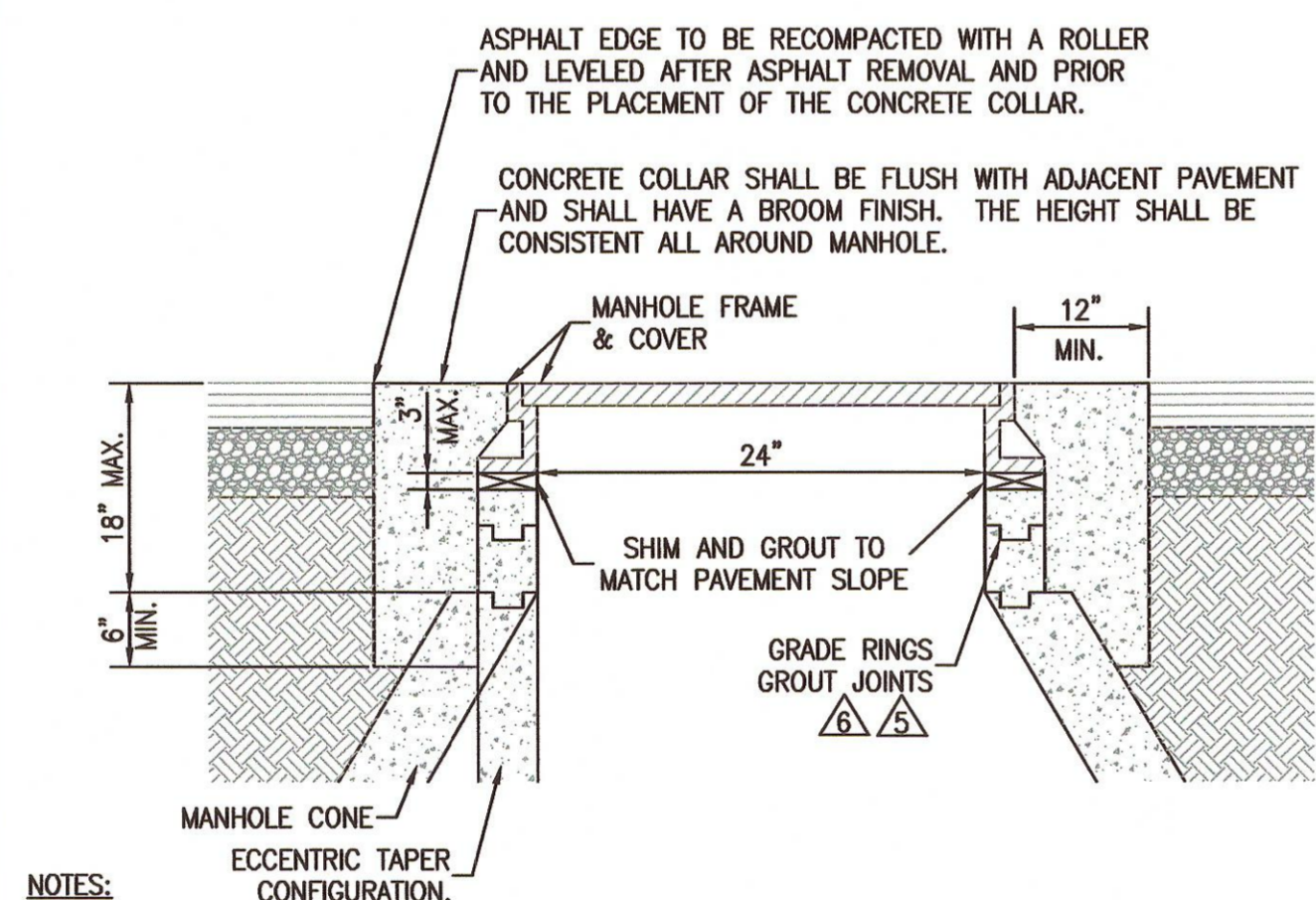
- ALL PRECAST MANHOLE COMPONENTS SHALL CONFORM TO ASTM C-478.
- PIPES SHALL NOT PROTRUDE MORE THAN 3" INSIDE MANHOLE SECTION AS MEASURED AT THE OUTSIDE EDGES OF THE PIPE, VERTICALLY ALIGNED WITH THE SPRINGLINE. PIPE CONNECTION TO MANHOLE SHALL BE WATERTIGHT.
- MANHOLE BASE SHALL BE PORTLAND CEMENT CONCRETE (P.C.C.) AND SHALL HAVE THE FOLLOWING CHARACTERISTICS: 3000 PSI MINIMUM COMPRESSIVE STRENGTH AT 28 DAYS, MINIMUM 6 SACKS OF CEMENT PER CUBIC YARD WITH SLUMP AT 1 TO 4 INCHES. ALL MATERIAL SHALL CONFORM TO STANDARD SPECIFICATIONS OF PUBLIC WORKS CONSTRUCTION (SSPWC). PRECAST CONCRETE BASE MAY BE USED IN LIEU OF CAST-IN-PLACE BASE.
- MANHOLE MATERIALS AND CONSTRUCTION SHALL CONFORM TO THE REQUIREMENTS OF SECTION 204 "MANHOLES AND CATCH BASINS" OF THE STANDARD SPECIFICATIONS.
- PRECAST MANHOLE SECTIONS, OTHER THAN GRADE RINGS, SHALL BE JOINED WITH FLEXIBLE GASKET MATERIAL SUCH AS "RAM-NEK" OR EQUAL AS PER MANUFACTURER'S RECOMMENDATIONS.
- EXCAVATION AND BACKFILL SHALL BE AS SPECIFIED FOR "TRENCH EXCAVATION AND BACKFILL" IN SECTION 305 OF THE STANDARD SPECIFICATIONS.
- EXCAVATION SHALL BE AS NEARLY VERTICAL AS POSSIBLE (SHEET AND SHORE IF SOIL CONDITIONS REQUIRE) IN EXISTING STREET SECTIONS, ALLEY SECTIONS, AND CONFINED AREAS, SUCH AS LIMITED EASEMENTS OR ADJACENT STRUCTURES.
- MANHOLE PRECAST SECTION LENGTH SHALL BE ARRANGED TO FIT THE REQUIRED DEPTH.
- NO LATERALS OR PIPES LESS THAN 8" IN DIAMETER SHALL BE CONNECTED TO THE MANHOLE.
- PRECAST CONCRETE BASE MAY BE USED IN LIEU OF CAST-IN-PLACE BASE.
- MATCH PIPE INVERTS TO MANHOLE INVERTS WHERE PIPES CONNECT TO MANHOLE BASE.
- ALL MANHOLES SHALL BE WATERTIGHT.
- PRIOR TO BACKFILLING, ALL MANHOLES SHALL BE VACUUM TESTED PER ASTM C-1244.
- NO STEPS, LADDERS, OR OTHER CLIMBING DEVICES SHALL BE INSTALLED IN THE MANHOLE.
- REINFORCING STEEL SHALL BE AS SHOWN, WIRED TIGHTLY AT ALL INTERSECTIONS AND EMBEDDED AT LEAST 1 1/2" CLEAR, UNLESS OTHERWISE NOTED.
- WHEN PIPE CONNECTIONS TO EXISTING MANHOLES ARE ALLOWED, THEY SHALL BE MADE BY CORE DRILLING THE MANHOLE AND CONNECTING THE PIPE PENETRATION PER CONNECTION DETAIL THIS SHEET.

NOTES - MANHOLE



STORM DRAIN LID

SEWER LID

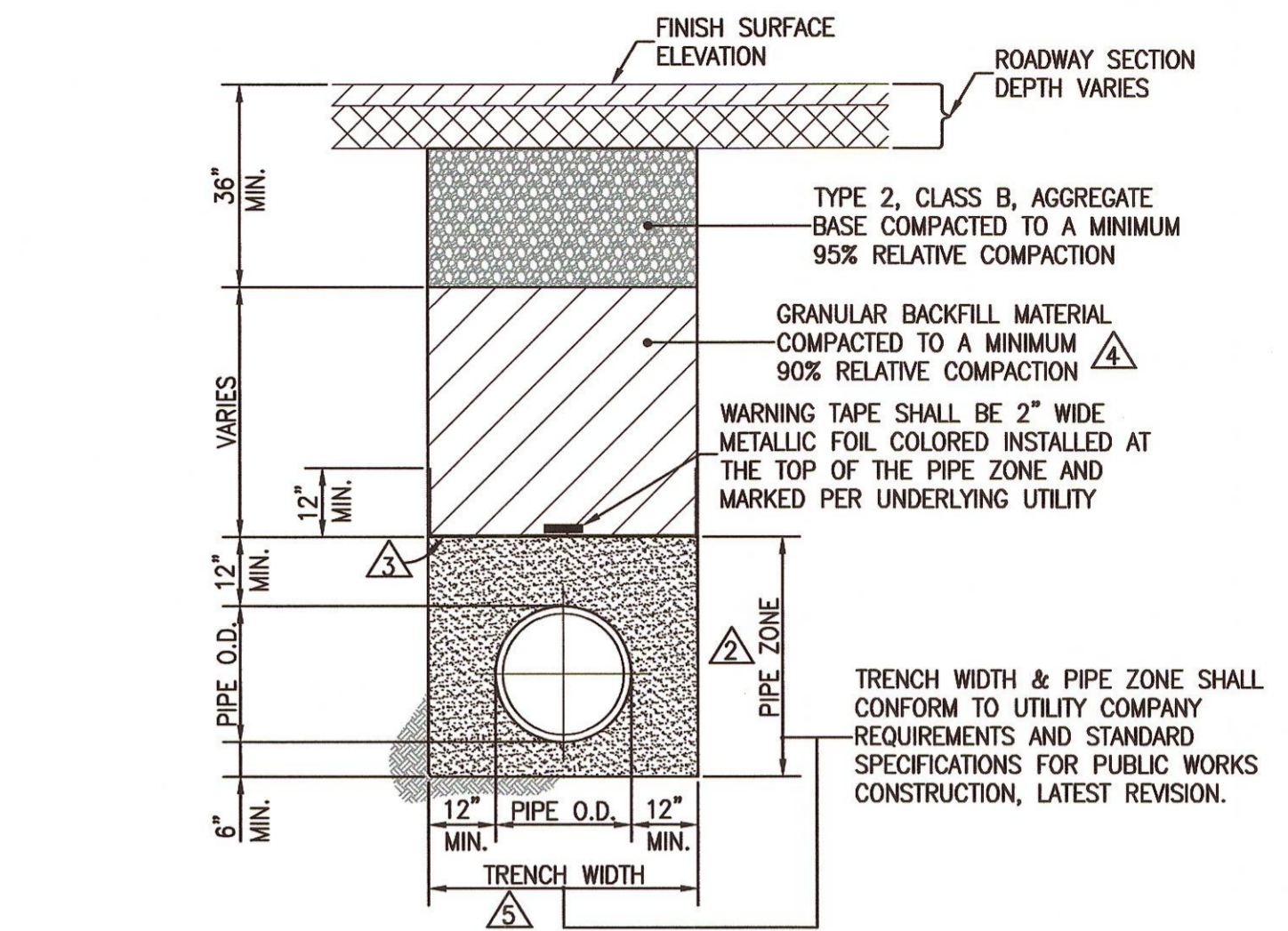


- NOTES:**
- FIBER-REINFORCED PORTLAND CEMENT CONCRETE (P.C.C.) SHALL HAVE THE FOLLOWING CHARACTERISTICS: 4000 PSI MIN. COMPRESSIVE STRENGTH AT 28 DAYS, MIN. 6 SACKS OF CEMENT PER CUBIC YARD WITH MAX. WATER-CEMENT RATIO OF 0.45, AIR ENTRAINMENT 6% ±1.5%, SLUMP AT 1 TO 4 INCHES. MIX DESIGN SHALL CONFORM TO THE REQUIREMENTS OF SECTION 337 OF STANDARD SPECIFICATIONS OF PUBLIC WORKS CONSTRUCTION (SSPWC). CEMENT SHALL BE TYPE II. ALL CEMENT CONCRETE SHALL HAVE A COARSE AGGREGATE GRADATION CONFORMING TO SIZE No. 67. ALL MATERIALS SHALL CONFORM TO SSPWC.
  - CIRCUMSTANCES MAY REQUIRE THE NEED FOR SPECIAL TYPES OF TOP OF MANHOLE CONFIGURATIONS SUCH AS FLAT TOP, ABOVE GROUND, ETC. AS DIRECTED BY THE CITY OF SPARKS. DETAILED PLANS OF ANY SPECIAL TOP OF MANHOLE CONFIGURATIONS AND ASSOCIATED COLLARS MUST BE APPROVED BY THE ENGINEER.
  - IN UNPAVED AREAS, IT SHALL BE NECESSARY TO SET THE MANHOLE RIM APPROXIMATELY 6 INCHES ABOVE THE SURROUNDING AREA. INSTALL A 6 INCH THICK RING OF CONCRETE, TAPERED AT A 3:1 SLOPE, FROM THE TOP, OUTSIDE EDGE OF THE COLLAR TO THE EXISTING GROUND SURFACE.
  - EXISTING SANITARY SEWER MANHOLE LIDS LOCATED IN THE GUTTER PANS, SHALL HAVE NEW WATER TIGHT FRAMES AND COVERS.
  - ALL GRADE RING JOINTS ARE TO BE GROUTED WITH NON-SHRINK GROUT HAVING THE FOLLOWING CHARACTERISTICS: 3000 PSI MIN. COMPRESSIVE STRENGTH AT 28 DAYS, MIN. 6 SACKS OF CEMENT PER CUBIC YARD AND SLUMP AT 1 TO 4 INCHES. ALL MATERIAL SHALL CONFORM TO SSPWC.
  - ALL GRADE RINGS SHALL BE PORTLAND CEMENT CONCRETE. PVC GRADE RINGS ARE NOT ALLOWED.

MANHOLE COLLAR

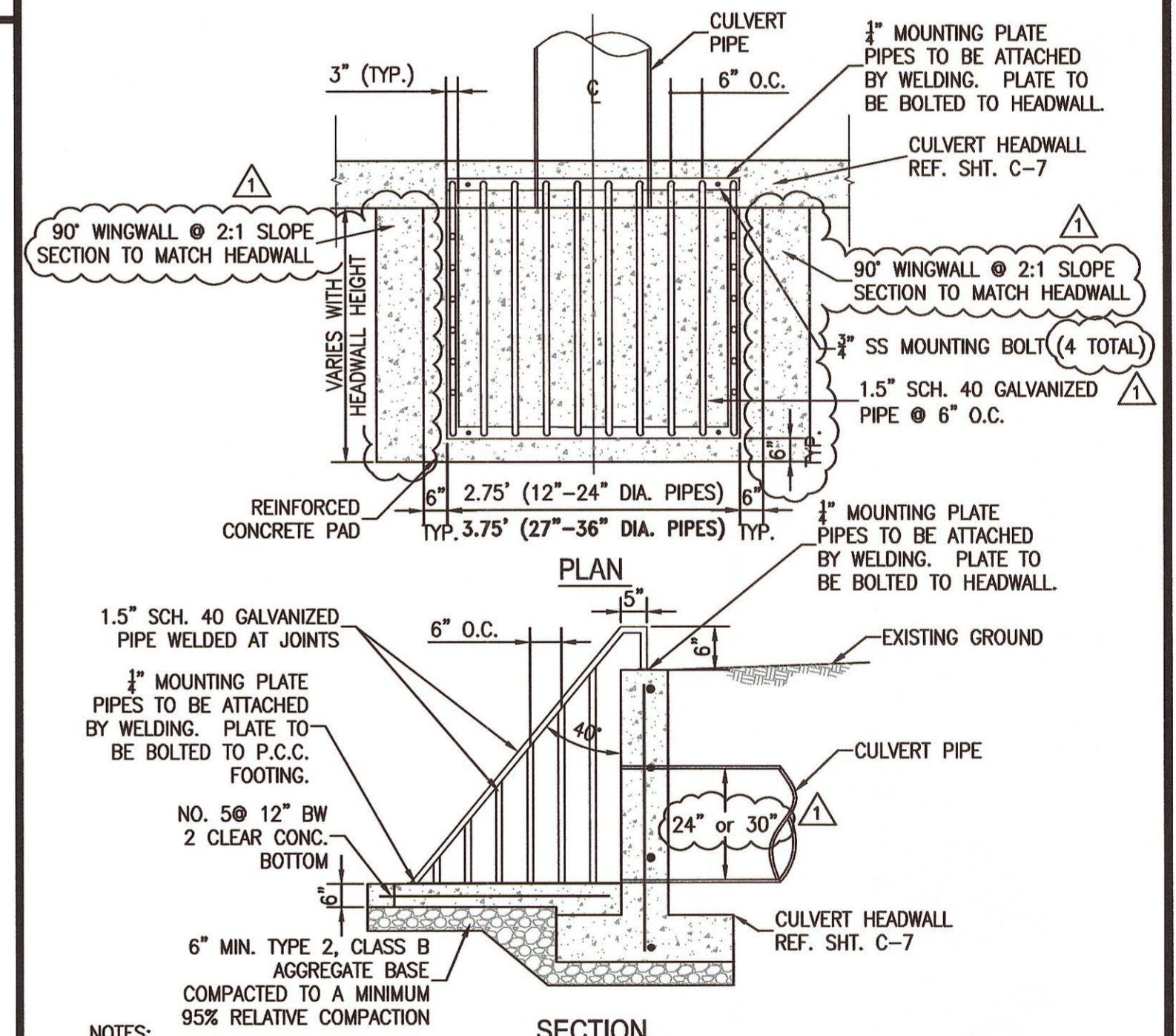
GENERAL NOTES

- ALL CONSTRUCTION AND MATERIALS SHALL CONFORM TO THE BOOK "STANDARD SPECIFICATIONS FOR PUBLIC WORKS CONSTRUCTION" (CURRENT EDITION), AND THE "STANDARD DETAILS FOR PUBLIC WORKS CONSTRUCTION", AS ADOPTED AND MODIFIED BY THE CITY OF SPARKS AND DISTRIBUTED BY WASHOE COUNTY, INCLUDING ANY ADDITIONS OR MODIFICATIONS THAT ARE SET FORTH IN THE DRAWINGS OR SPECIFICATIONS.
- THE CONTRACTOR SHALL ASSUME SOLE AND COMPLETE RESPONSIBILITY FOR JOB SITE CONDITIONS DURING THE COURSE OF CONSTRUCTION FOR THIS PROJECT, INCLUDING SAFETY OF ALL PERSONS AND PROPERTY; THAT THIS REQUIREMENT SHALL APPLY CONTINUOUSLY, AND NOT BE LIMITED TO NORMAL WORKING HOURS.
- THE CONTRACTOR SHALL BE RESPONSIBLE FOR ALL EXCAVATION AND SHORING PROCEDURES AND CONFORM TO THE LATEST OSHA REQUIREMENTS.
- THE CONTRACTOR SHALL MAINTAIN AN ON-GOING DUST CONTROL PROGRAM, INCLUDING WATERING OF OPEN AREAS, IN ORDER TO CONFORM WITH THE LATEST FEDERAL, STATE, AND COUNTY AIR POLLUTION REGULATIONS.
- THE CONTRACTOR SHALL BE RESPONSIBLE FOR DAILY REMOVAL OF ALL CONSTRUCTION MATERIALS SPILLED ON PAVED STREETS, ON-SITE OR OFF-SITE. AT THE CLOSE OF EACH DAY, THE CONTRACTOR SHALL INSPECT THE SITE FOR ANY DEBRIS OR TRASH AND PROPERLY DISPOSE OF IT.
- THE CONTRACTOR SHALL NOTIFY THE DESIGN PROFESSIONAL, ALL GOVERNING AGENCIES HAVING JURISDICTION OVER THE WORK, UTILITY COMPANIES, TELEPHONE COMPANIES, CABLE TELEVISION COMPANIES, AND ANY OTHER ENTITY IMPACTED BY THE WORK 48 HOURS PRIOR TO BEGINNING CONSTRUCTION. THE CONTRACTOR SHALL GIVE 48 HOURS PRIOR NOTICE FOR ALL CONSTRUCTION STAKING AND INSPECTIONS REQUIRED DURING CONSTRUCTION.
- THE CONTRACTOR SHALL OBTAIN AND PAY FOR ALL NECESSARY PERMITS AND FEES REQUIRED FOR CONSTRUCTION.
- THE CONTRACTOR SHALL BE RESPONSIBLE FOR ALL CONSTRUCTION SIGNING, BARRICADES, AND TRAFFIC DELINEATION TO CONFORM TO THE STATE OF NEVADA, DEPARTMENT OF TRANSPORTATION "NEVADA WORK ZONE TRAFFIC CONTROL MANUAL" AND THE MANUAL ON UNIFORM FRICTURE CONTROL DEVICES (MUTCD), LATEST EDITION.
- THE CONTRACTOR SHALL PROTECT FROM DAMAGE EXISTING UTILITY STRUCTURES ON AND AROUND THE SITE INCLUDING, BUT NOT LIMITED TO, PAVEMENT, CURB AND GUTTER, SIDEWALK, LANDSCAPING, IRRIGATION LINES, SIGNAGE, STORM AND SANITARY SEWERS, UTILITIES, TELEPHONE, TRAFFIC CONTROL, AND CABLE TELEVISION. THE CONTRACTOR SHALL ASSUME SOLE RESPONSIBILITY FOR THE REPAIR AND/OR REPLACEMENT OF ANY IMPROVEMENTS (NEW OR EXISTING) DAMAGED THROUGHOUT THE COURSE OF CONSTRUCTION EITHER AS A DIRECT RESULT OF THE ACTIVITIES OR THE FAILURE TO ADEQUATELY PROTECT THE IMPROVEMENT.
- THE CONTRACTOR SHALL, DURING THE COURSE OF THE PROJECT, MAINTAIN RECORD DRAWINGS INDICATING BY DIMENSION AND DESCRIPTION ANY FACILITY CONSTRUCTED CONTRARY TO THAT SHOWN ON THE DRAWINGS OR DESCRIBED IN THE SPECIFICATIONS. AT THE END OF CONSTRUCTION, THE RECORD DRAWINGS SHALL BE TURNED OVER TO THE ENGINEER.
- PRIOR TO THEIR INCORPORATION INTO THE WORK, THE CONTRACTOR SHALL SUBMIT FOR THE ENGINEER'S APPROVAL SHOP DRAWINGS AND MATERIAL SPECIFICATIONS FOR ALL MATERIALS TO BE USED ON THE PROJECT.
- ANY DAMAGED ASPHALT OR CONCRETE BEYOND THAT SHOWN ON THE PLANS WILL BE THE CONTRACTOR'S RESPONSIBILITY TO REPLACE.



- NOTES:**
- ALL MATERIALS AND INSTALLATION PROCEDURES SHALL BE IN ACCORDANCE WITH STANDARD SPECIFICATIONS FOR PUBLIC WORKS CONSTRUCTION (SSPWC), LATEST REVISION.
  - BEDDING MATERIAL SHALL CONFORM TO OWNING-UTILITY COMPANY REQUIREMENTS AS APPROVED BY THE CITY OF SPARKS. FOR CITY-OWNED UTILITIES, BEDDING MATERIAL SHALL BE CLASS A OR C, COMPACTED TO MINIMUM 90% RELATIVE COMPACTION. MATERIALS SHALL CONFORM TO SSPWC SECTION 200.
  - CLASS C BEDDING REQUIRES INSTALLATION OF GEOTEXTILE FABRIC BETWEEN PIPE ZONE AND BACKFILL MATERIAL. GEOTEXTILE FABRIC SHALL BE MIRAFI 180N OR APPROVED EQUAL.
  - BACKFILL MATERIAL SHALL BE TYPE 2, CLASS B OR CLASS E AND COMPACTED TO MINIMUM 90% RELATIVE COMPACTION. MATERIALS SHALL CONFORM TO SSPWC SECTION 200.
  - ALL EXCAVATIONS SHALL CONFORM TO THE LATEST O.S.H.A. REQUIREMENTS.
  - EXISTING PIPE TO BE ABANDONED SHALL BE GROUT FILLED OR COMPLETELY REMOVED.

TRENCH EXCAVATION/BACKFILL



- NOTES:**
- NON-SHRINK GROUT SHALL HAVE THE FOLLOWING CHARACTERISTICS: 3000 PSI MIN. COMPRESSIVE STRENGTH AT 28 DAYS, MIN. 6 SACKS OF CEMENT PER CUBIC YARD AND SLUMP AT 1 TO 4 INCHES. ALL MATERIAL SHALL CONFORM TO STANDARD SPECIFICATIONS OF PUBLIC WORKS CONSTRUCTION (SSPWC) SECTION 202.
  - AN AGENCY-APPROVED FORM OF SEAL OR WATER STOP IS REQUIRED ON ALL STORM DRAIN INSTALLATIONS.
  - A RESILIENT FLEXIBLE CONNECTOR INSTALLED IN ACCORDANCE WITH STD. CONNECTION DETAIL A OF STD. DETAIL R-223B MAY BE USED TO SATISFY THE REQUIREMENTS OF NOTE 2 ABOVE.
  - ALL PIPE OPENINGS TO NEW MANHOLES MUST BE EITHER CAST-IN-PLACE OR PRE-FORMED AND PIPE OPENINGS TO EXISTING MANHOLES MUST BE CORE DRILLED.

SANITARY SEWER OR STORM PIPE TO MANHOLE CONNECTION

HEADWALL TRASH RACK

REVISOR: 5/21/19 BID ADDENDUM #1  
REVISED HEADWALL/TRASH RACK DETAIL FOR CLARIFICATION

**AXION ENGINEERING**  
Civil Engineering • Land Development  
681 EDISON WAY - RENO, NEVADA 89502  
PH 775-771-5554 / FX 775-858-3851

PROFESSIONAL ENGINEER-STATE OF NEVADA  
**RYAN R. SMITH**  
Exp. 6-30-20  
CIVIL  
No. 161951  
5/21/19

CITY OF SPARKS  
**WINGFIELD HILLS RD**  
DRAINAGE IMPROVEMENTS  
SPARKS, NEVADA

| revisions |                         |
|-----------|-------------------------|
| △         | 5/21/19 BID ADDENDUM #1 |
|           |                         |
|           |                         |
|           |                         |
|           |                         |
|           |                         |

drawn: KW  
checked: GKG  
date: MAY 2019  
scale:  
project no: 17020