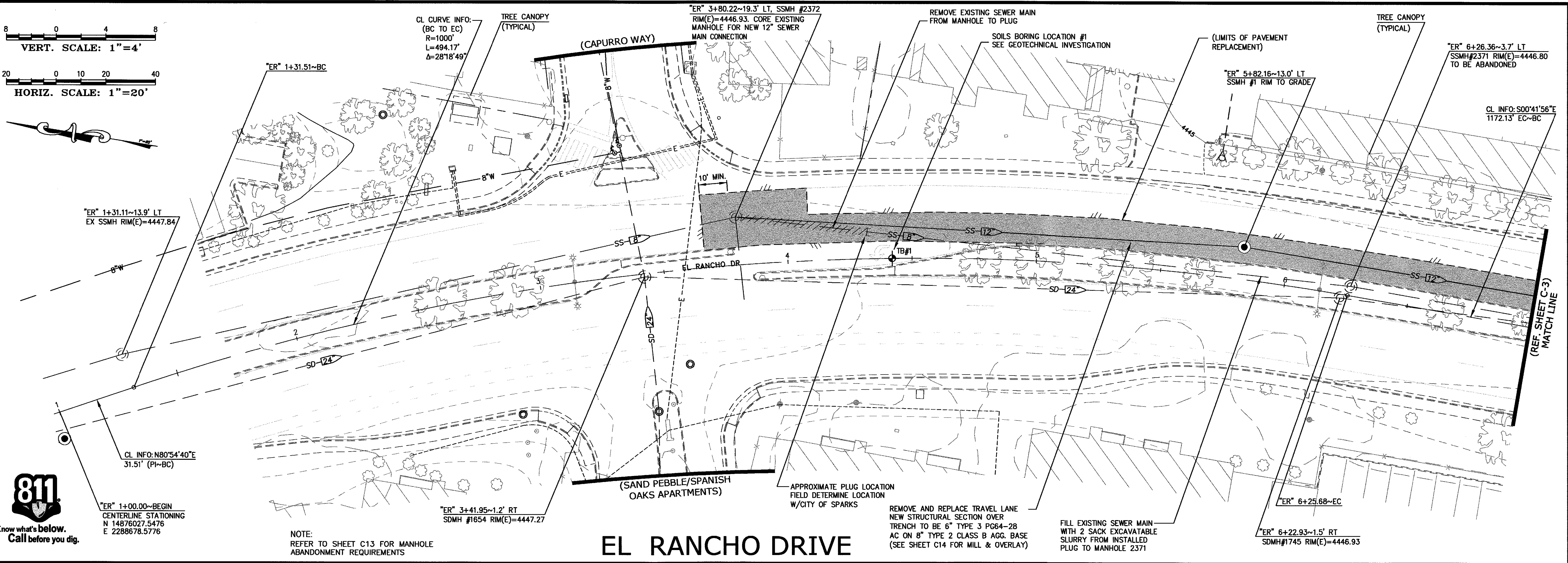
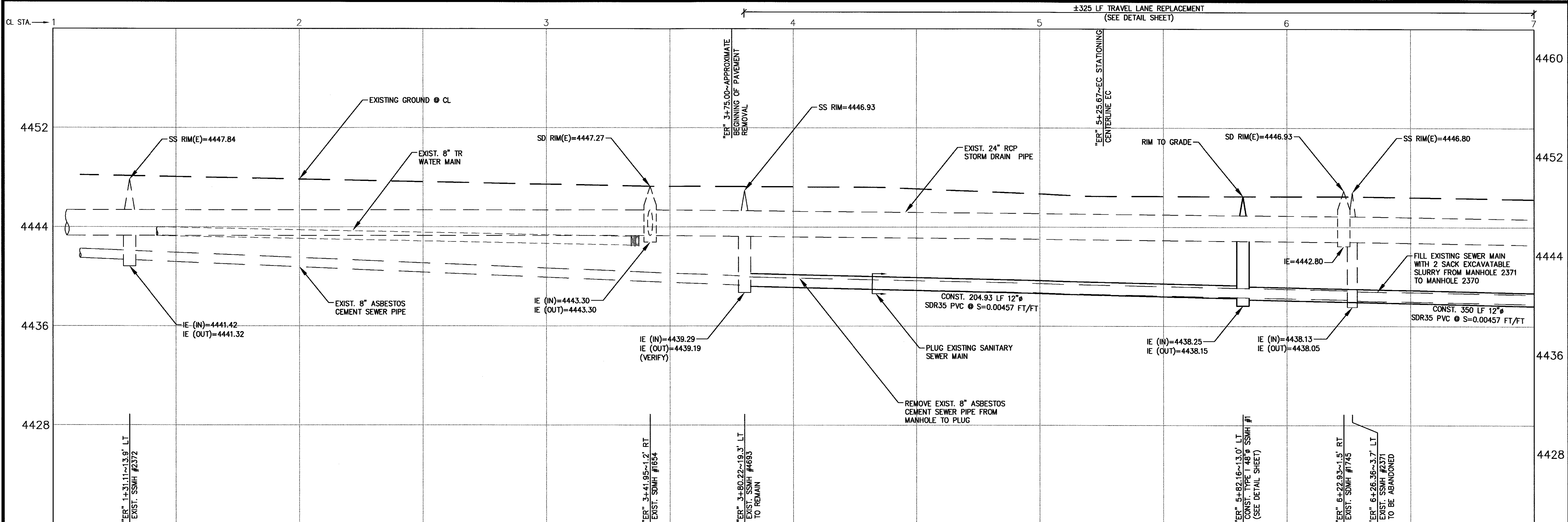


Know what's below.
Call before you dig.



NOTE:
REFER TO SHEET C13 FOR MANHOLE
ABANDONMENT REQUIREMENTS

EL RANCHO DRIVE



PLAN & PROFILE

AXION ENGINEERING
Civil Engineering • Land Development

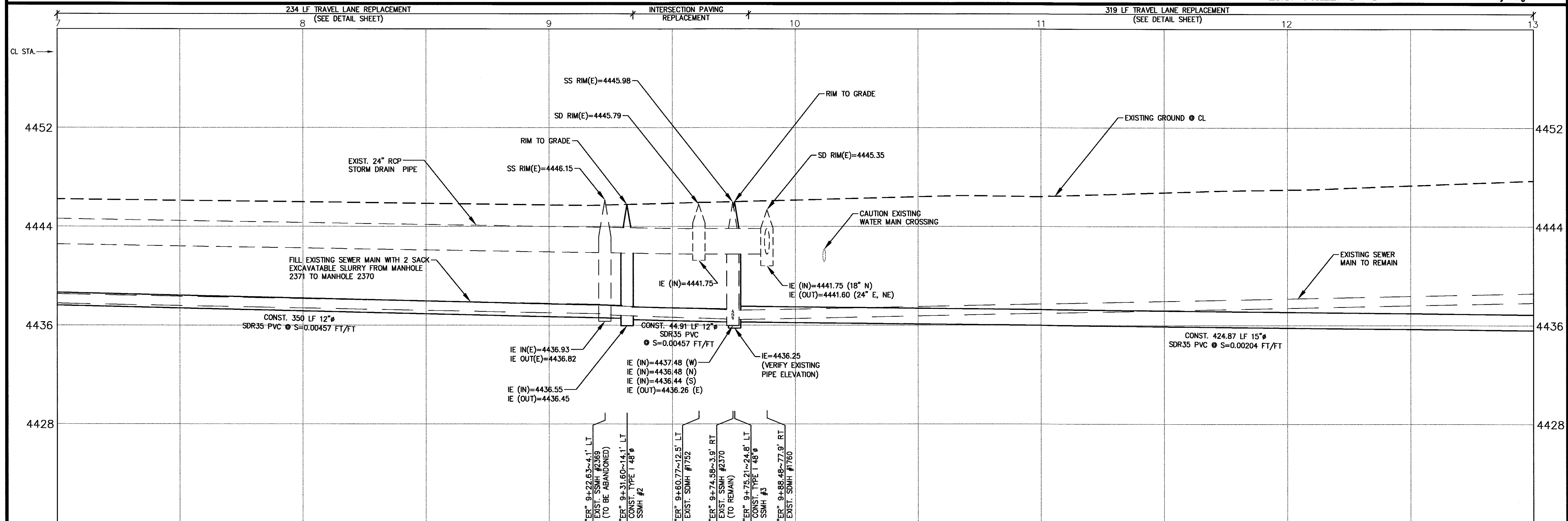
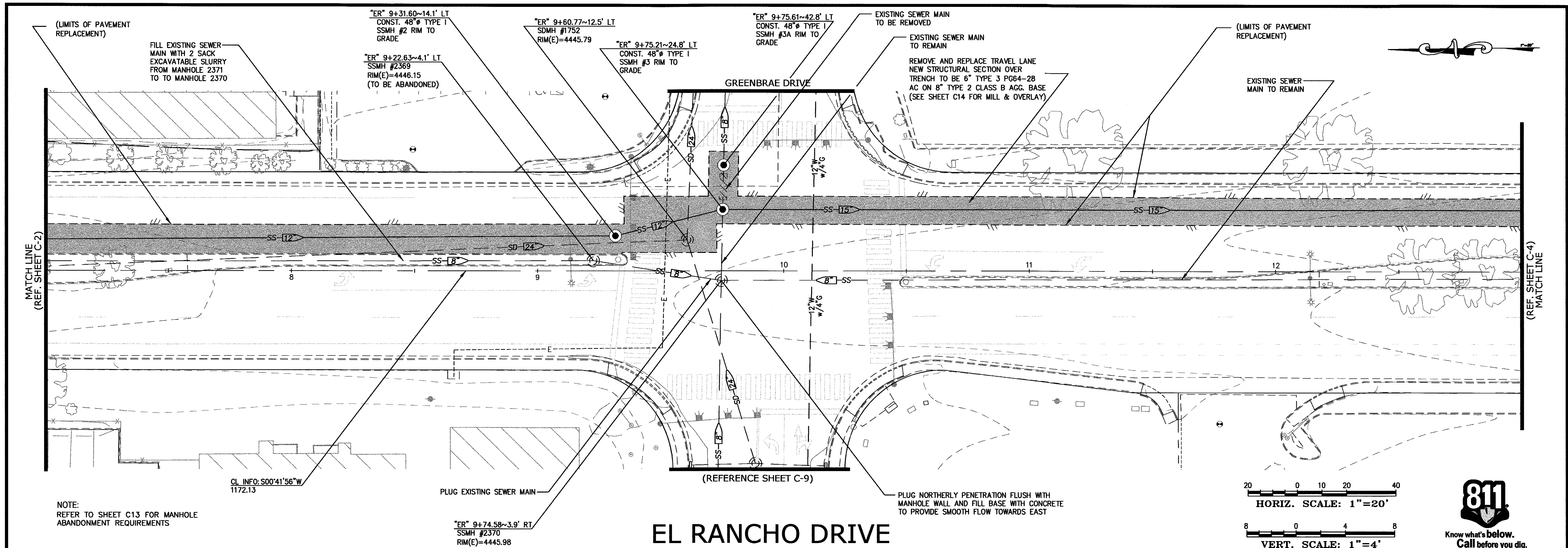
681 EDISON WAY - RENO, NEVADA 89502
PH: 775-771-6564 / FX: 775-856-8951

PROFESSIONAL ENGINEER - STATE OF NEVADA
CARY A. RUZELIS
Exp. 6-30-19
CIVIL
LICENSE NO. 10372
2/22/18

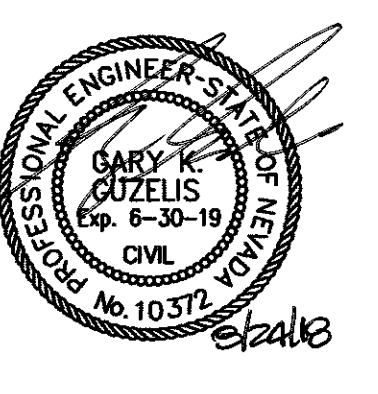
**SEWER IMPROVEMENT PLANS FOR
EL RANCHO DRIVE**
SPARKS, NEVADA

revisions	

drawn: GKG
checked: GKG
date: AUGUST 2018
scale: 1"=20'
project no: 17020



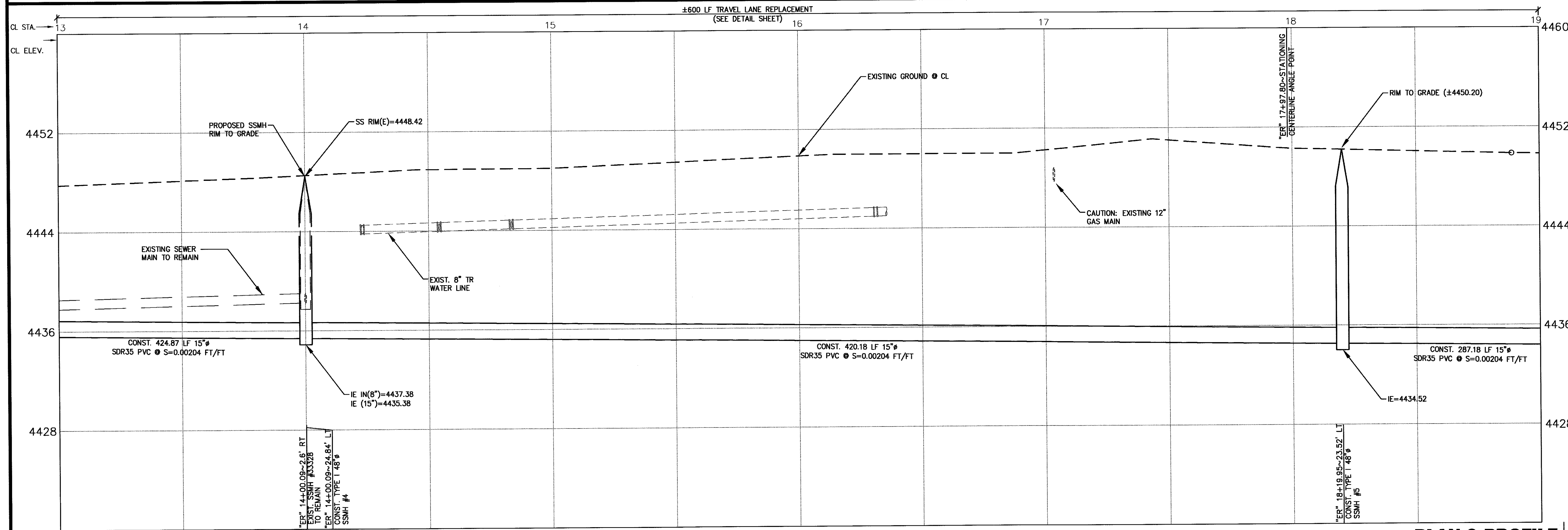
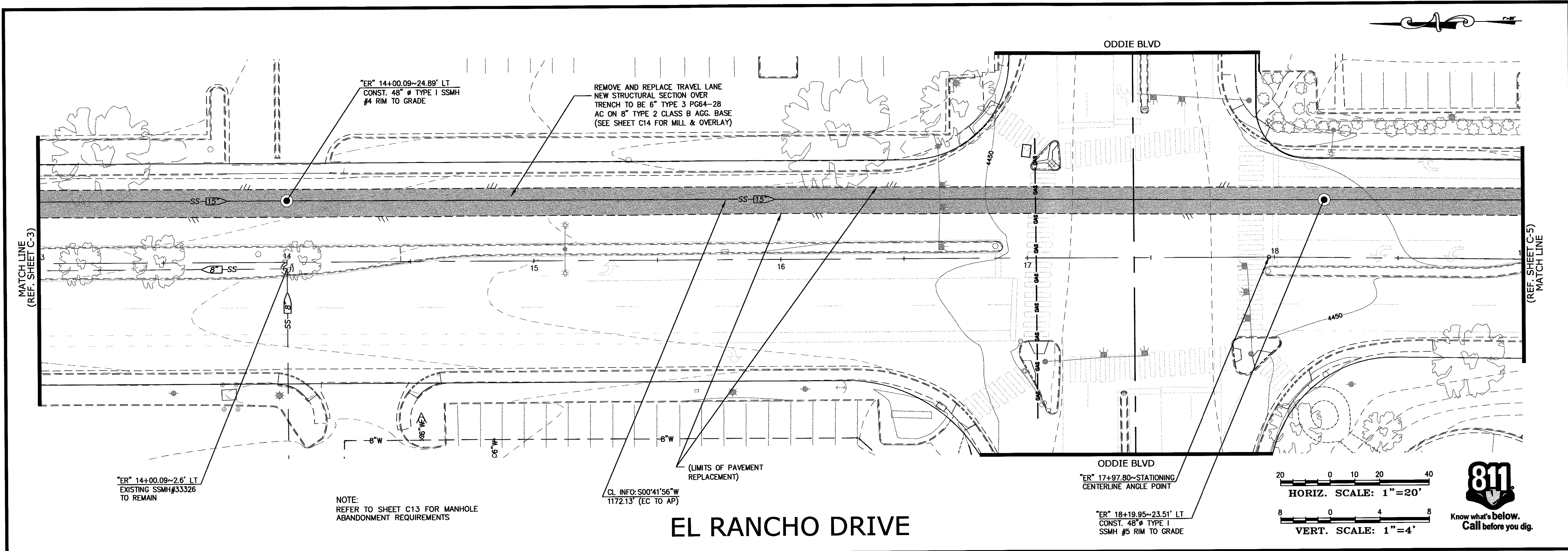
PLAN & PROFILE



**SEWER IMPROVEMENT PLANS FOR
EL RANCHO DRIVE
SPARKS, NEVADA**

revisions	

drawn: GKG
checked: GKG
date: AUGUST 2018
scale: 1"=20'
project no: 17020

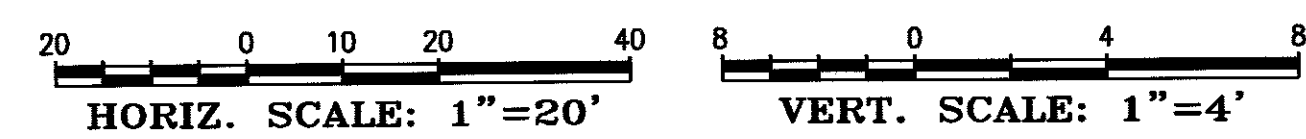
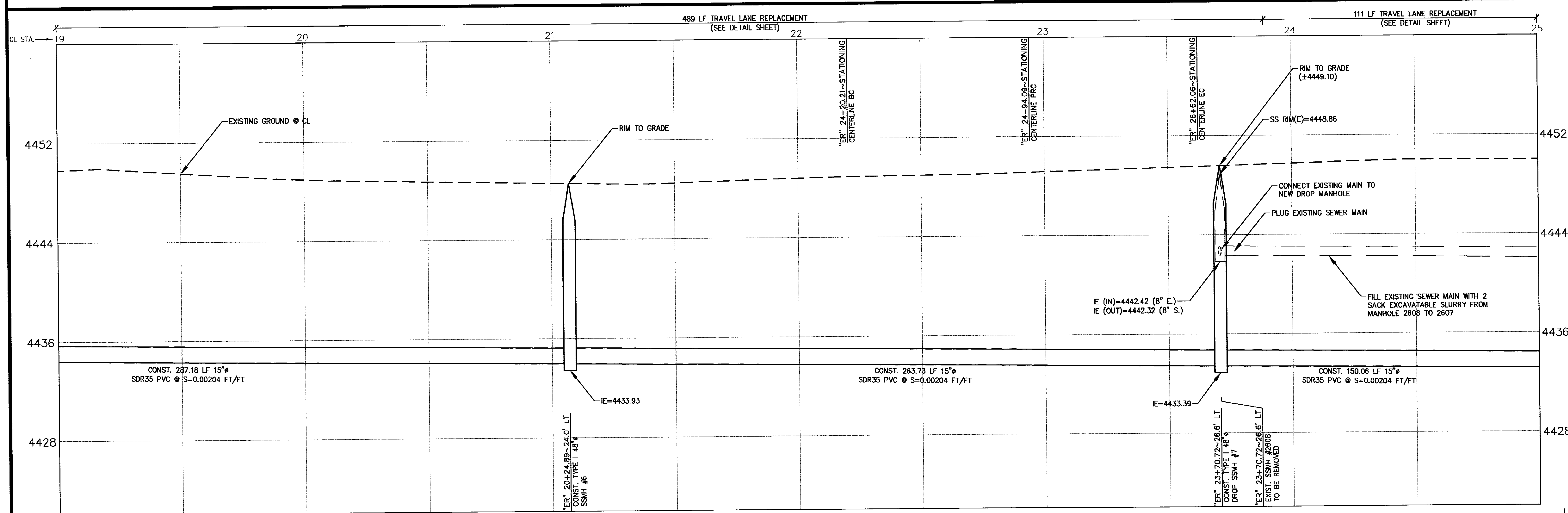
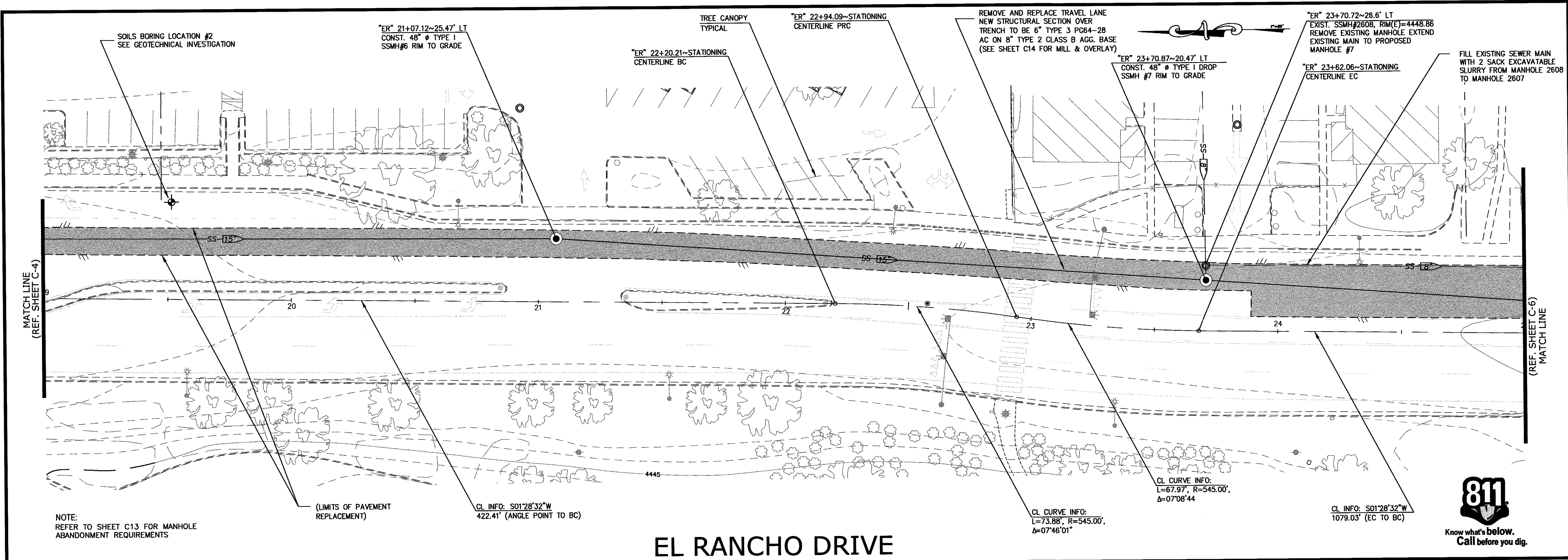


PLAN & PROFILE

revisions

NO.	DATE	DESCRIPTION

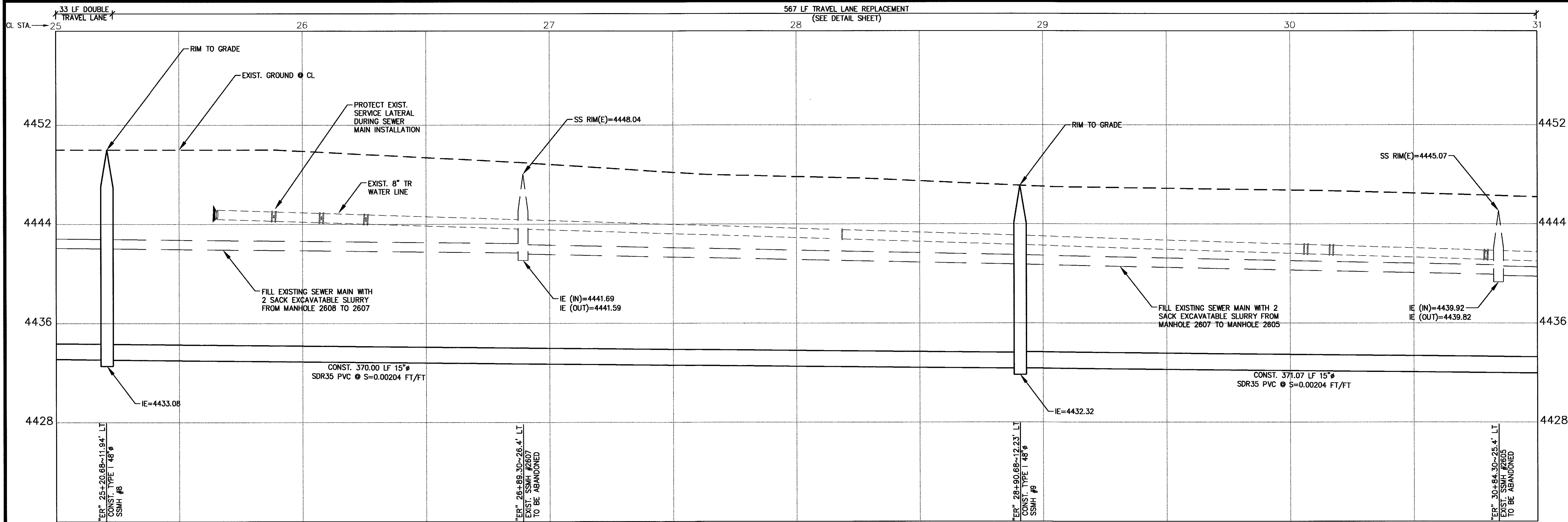
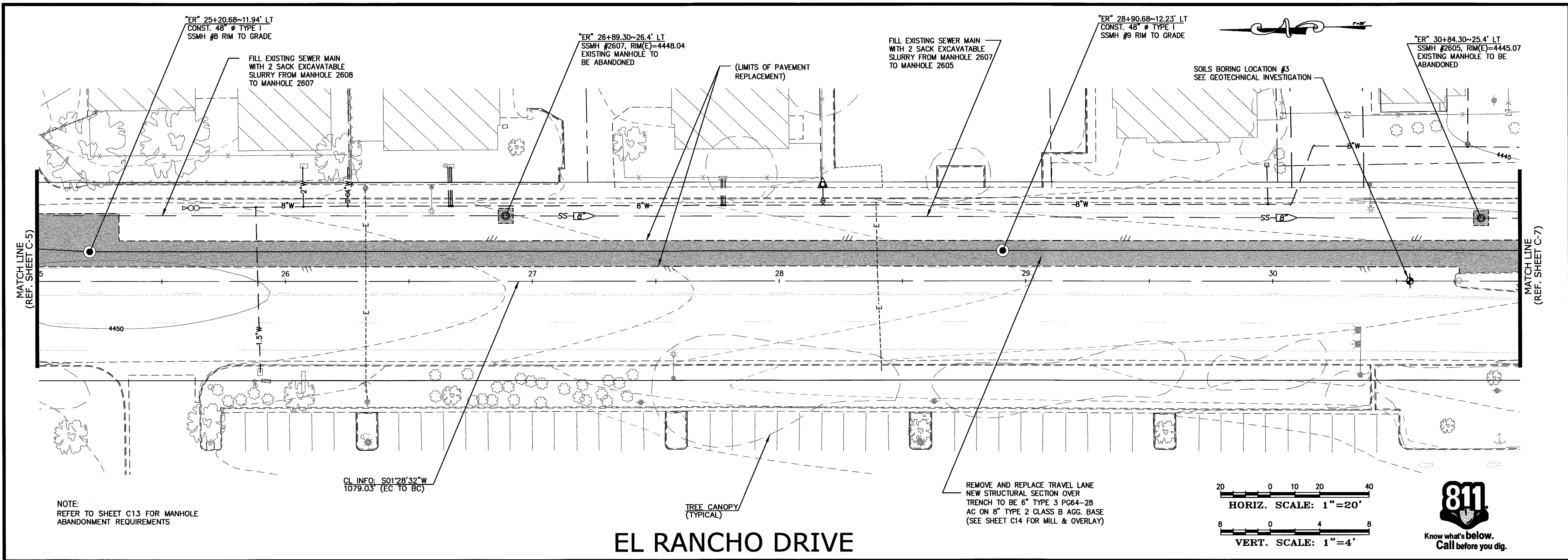
drawn: GKG
checked: GKG
date: AUGUST 2018
scale: 1"=20'
project no: 17020



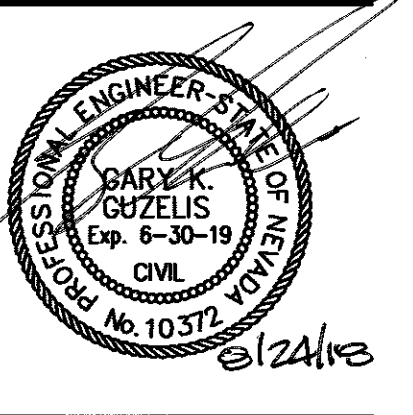
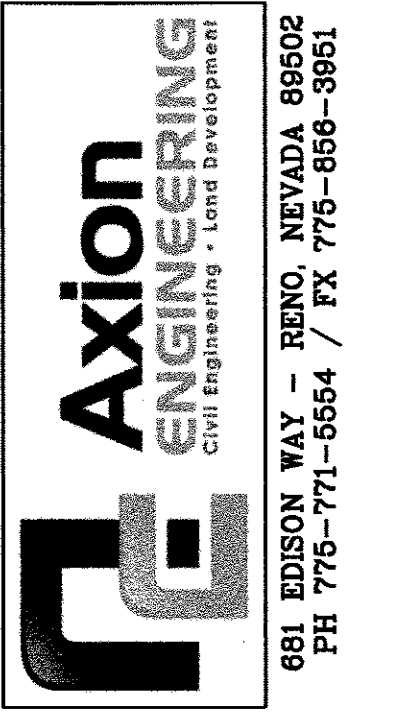
PLAN & PROFILE

NO.	REVISIONS

drawn: GKG
checked: GKG
date: AUGUST 2018
scale: 1"=20'
project no: 17020



PLAN & PROFILE



**SEWER IMPROVEMENT PLANS FOR
EL RANCHO DRIVE
SPARKS, NEVADA**

revisions	

drawn: GKG
 checked: GKG
 date: AUGUST 2018
 scale: 1"=20'
 project no: 17020

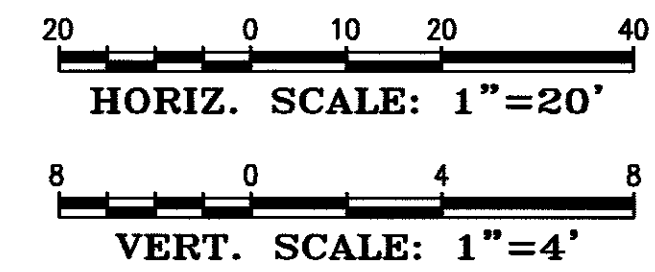
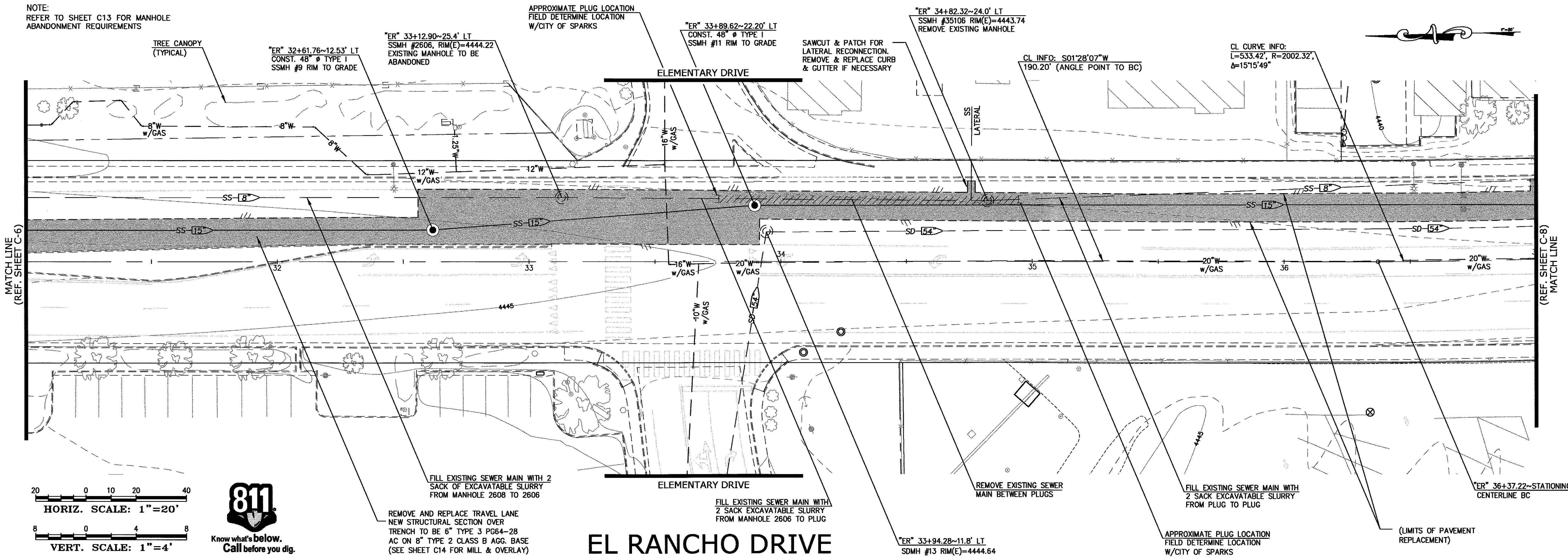
NOTE:
REFER TO SHEET C13 FOR MANHOLE
ABANDONMENT REQUIREMENTS

APPROXIMATE PLUG LOCATION
FIELD DETERMINE LOCATION
W/CITY OF SPARKS

"ER" 33+89.62~22.20' LT
CONST. 48" Ø TYPE I
SSMH #11 RIM TO GRADE

"ER" 34+82.32~24.0' LT
SSMH #35106 RIM(E)=4443.74
REMOVE EXISTING MANHOLE

CL CURVE INFO:
L=533.42', R=2002.32',
Δ=15°15'49"



FILL EXISTING SEWER MAIN WITH 2 SACK EXCAVATABLE SLURRY FROM MANHOLE 2608 TO 2606

REMOVE AND REPLACE TRAVEL LANE NEW STRUCTURAL SECTION OVER TRENCH TO BE 6" TYPE 3 PG64-28 AC ON 8" TYPE 2 CLASS B AGG. BASE (SEE SHEET C14 FOR MILL & OVERLAY)

FILL EXISTING SEWER MAIN WITH 2 SACK EXCAVATABLE SLURRY FROM MANHOLE 2606 TO PLUG

REMOVE EXISTING SEWER MAIN BETWEEN PLUGS

APPROXIMATE PLUG LOCATION FIELD DETERMINE LOCATION W/CITY OF SPARKS

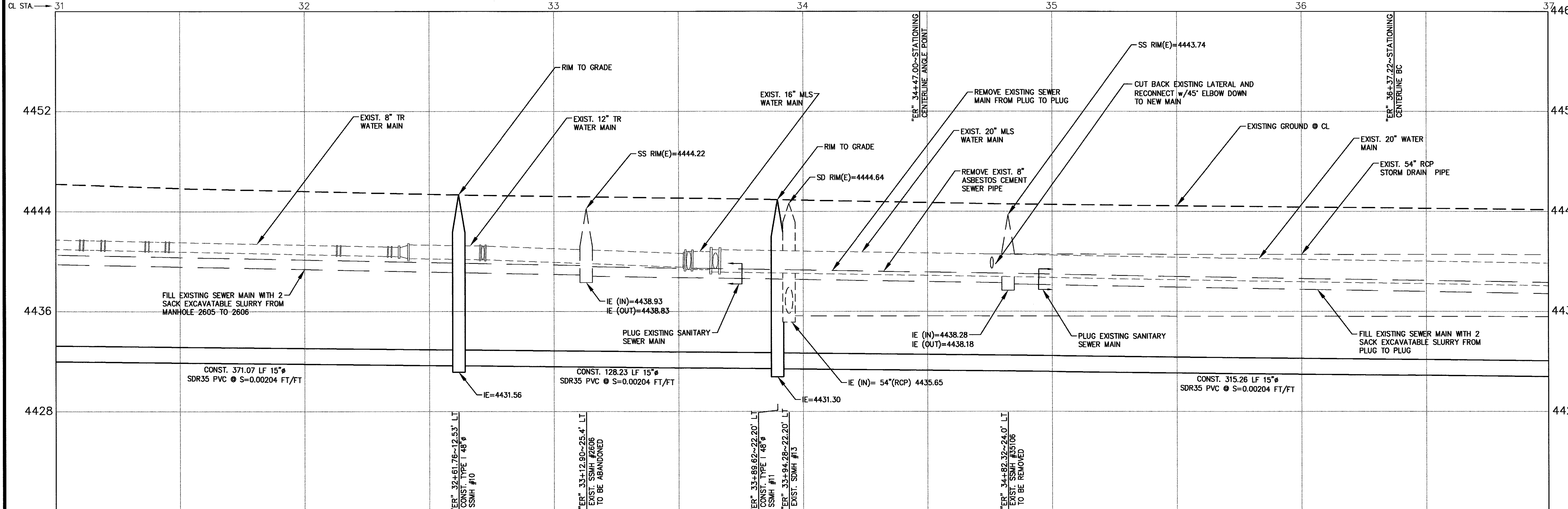
(LIMITS OF PAVEMENT REPLACEMENT)

EL RANCHO DRIVE

156 LF TRAVEL LANE REPLACEMENT (SEE DETAIL SHEET)

136 LF DOUBLE TRAVEL LANE REPLACEMENT (SEE DETAIL SHEET)

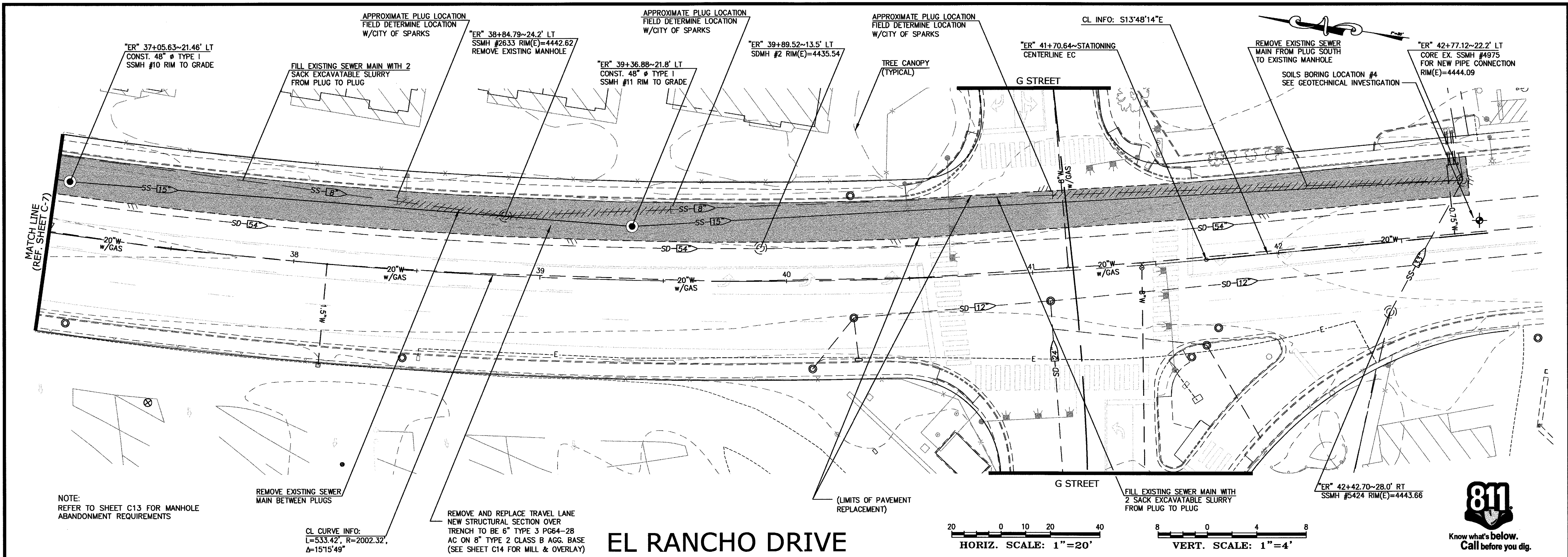
308 LF TRAVEL LANE REPLACEMENT (SEE DETAIL SHEET)



revisions	

drawn: GKG
checked: GKG
date: AUGUST 2018
scale: 1"=20'
project no: 17020

PLAN & PROFILE



NOTE: REFER TO SHEET C13 FOR MANHOLE ABANDONMENT REQUIREMENTS

REMOVE EXISTING SEWER MAIN BETWEEN PLUGS

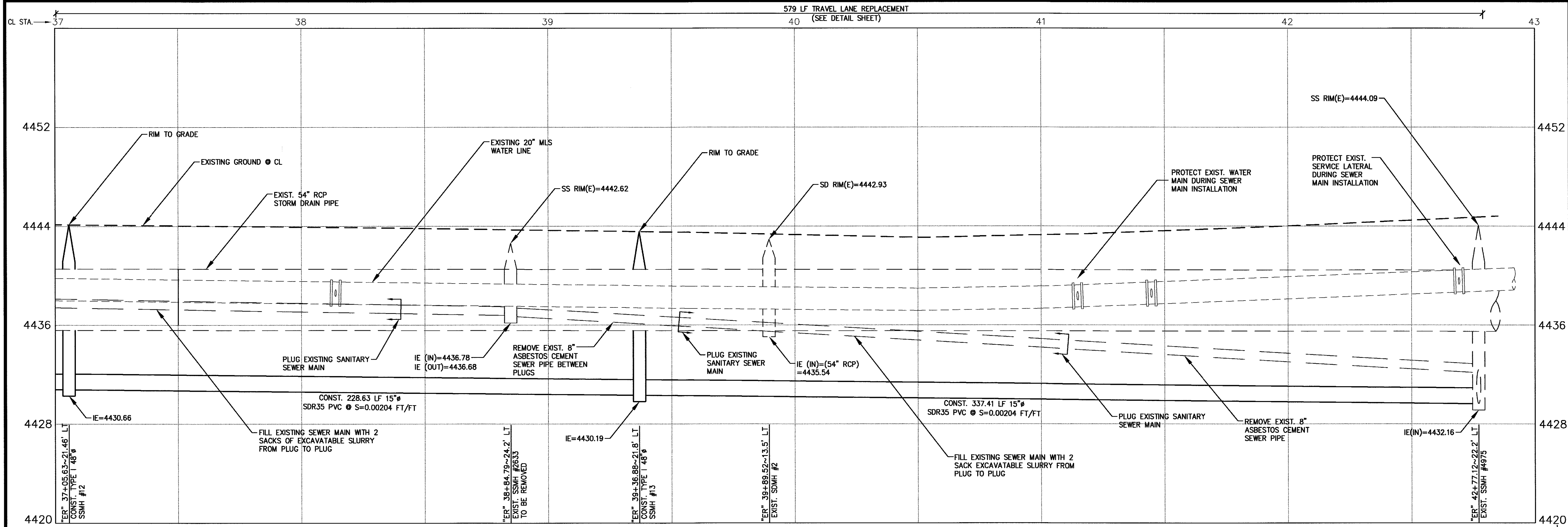
CL CURVE INFO:
L=533.42', R=2002.32',
Δ=15°15'49"

REMOVE AND REPLACE TRAVEL LANE NEW STRUCTURAL SECTION OVER TRENCH TO BE 6" TYPE 3 PG64-28 AC ON 8" TYPE 2 CLASS B AGG. BASE (SEE SHEET C14 FOR MILL & OVERLAY)

EL RANCHO DRIVE

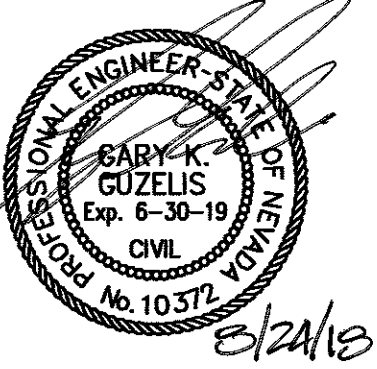
HORIZ. SCALE: 1"=20'

VERT. SCALE: 1"=4'



579 LF TRAVEL LANE REPLACEMENT (SEE DETAIL SHEET)

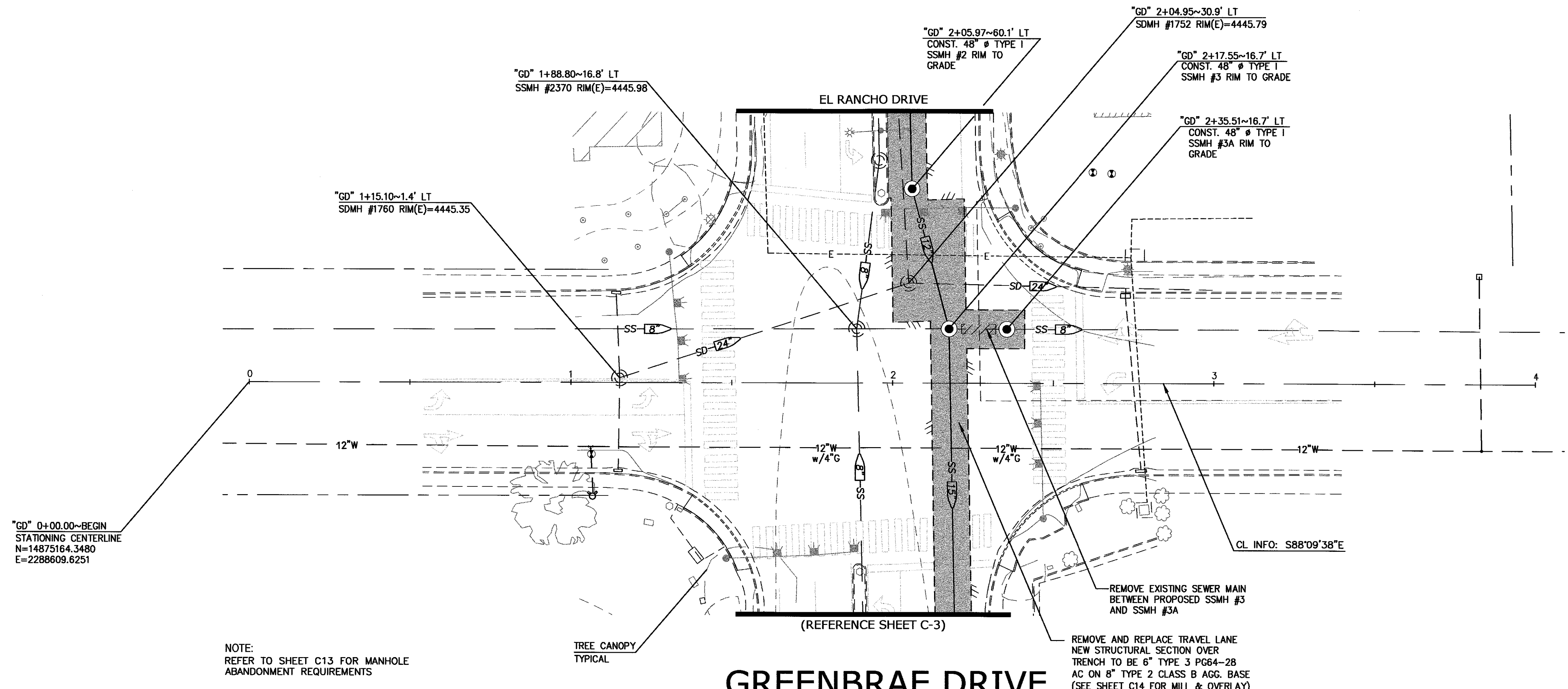
PLAN & PROFILE



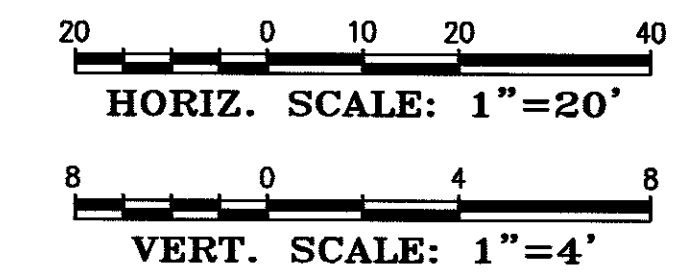
SEWER IMPROVEMENT PLANS FOR EL RANCHO DRIVE
SPARKS, NEVADA

revisions	

drawn:	GKG
checked:	GKG
date:	AUGUST 2018
scale:	1"=20'
project no:	17020



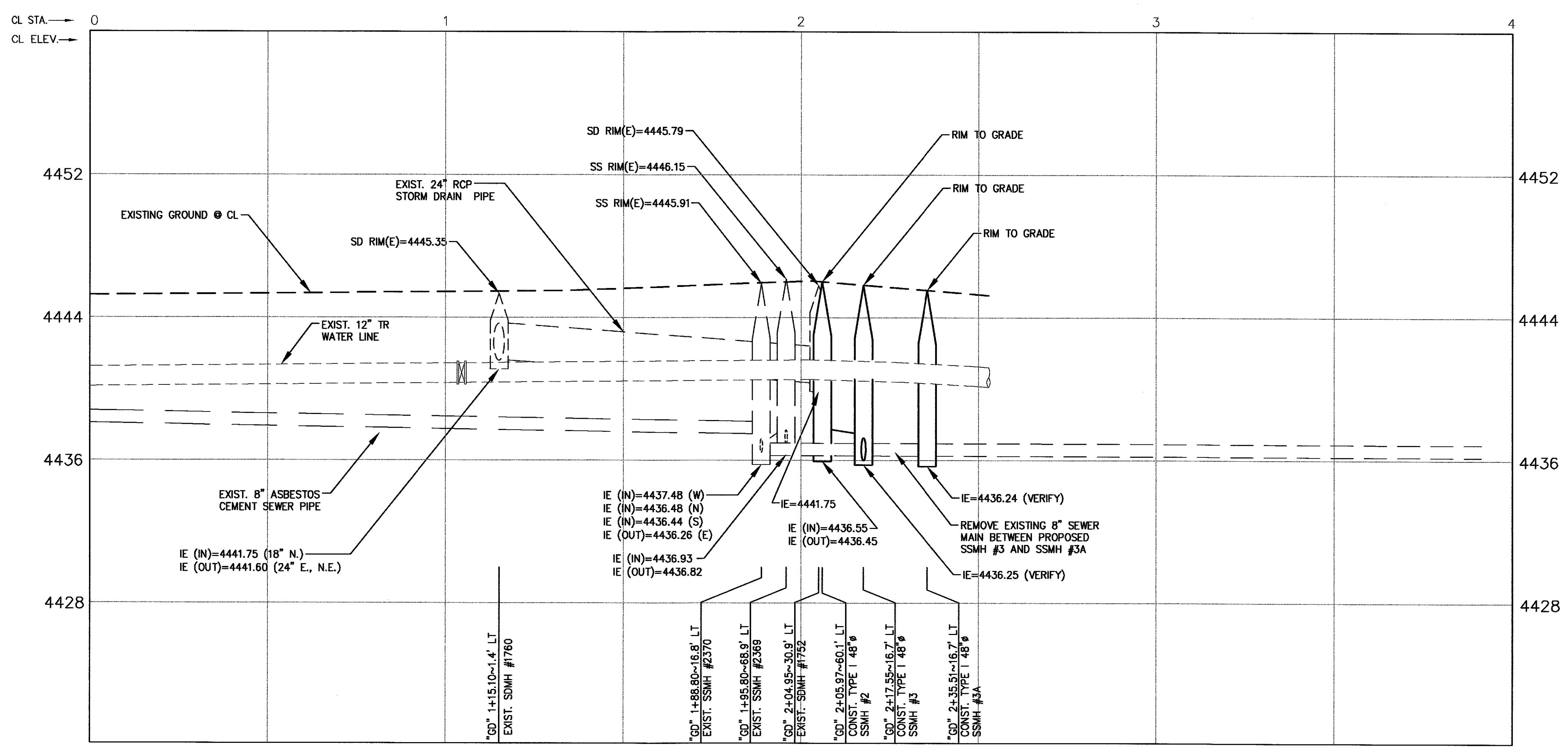
- LEGEND**
- SS- (DASHED IF EXISTING) SANITARY SEWER MAIN
 - SD- (DASHED IF EXISTING) STORM DRAIN MAIN
 - MANHOLE (DASHED IF EXISTING)
 - A.C. PAVING AREA
 - CONCRETE SIDEWALK
 - GRADE BREAK
 - CATCH BASIN
 - FIRE HYDRANT ASSEMBLY
 - 12\"/>



"GD" 0+00.00~BEGIN STATIONING CENTERLINE N=14875164.3480 E=2288609.6251

NOTE: REFER TO SHEET C13 FOR MANHOLE ABANDONMENT REQUIREMENTS

GREENBRAE DRIVE

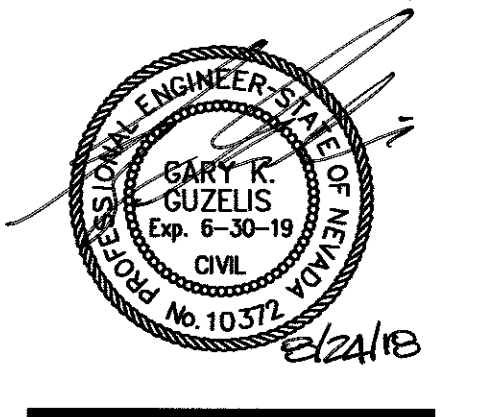


Know what's below.
Call before you dig.

PLAN & PROFILE

AXION ENGINEERING
Civil Engineering • Land Development

681 EDISON WAY - RENO, NEVADA 89502
PH 775-771-5554 / FX 775-856-3951



SEWER IMPROVEMENT PLANS FOR EL RANCHO DRIVE

SPARKS, NEVADA

revisions

drawn: GKG
checked: GKG
date: AUGUST 2018
scale: 1"=20'
project no: 17020

