



ADDENDUM #1

MUNICIPAL COURT SECURITY ENTRANCE REMODEL

BID #16/17-016

BIDS DUE NO LATER THAN: 1:45 PM ON MARCH 29, 2017

PUBLIC BID OPENING: 2:00 PM ON MARCH 29, 2017

This addendum is to notify all potential proposers of clarifications made to the Bid documents as stated below.

Project Manual Changes (Page 145 of the Bid Document):

- 1. Section 06 41 16 – Plastic-Laminated-Faced Architectural Cabinets:
 - a. Paragraph 1.2.B.2: Revise “Simulated Stone Countertops” reference to Section 12 36 61.

Drawings Changes / Comments:

- 1. Sheet E002 – Electrical Schedules and Lighting Compliance: Revise this sheet in its entirety per the attached. Modifications have been made to address dimmable light fixtures.
- 2. Sheet E301 – Lighting Plan: Revise this sheet in its entirety per the attached. Modifications have been made to address dimmable light fixtures

Please note and adjust your bid according to the revisions, additions, deletions, clarifications or modifications as presented on this Addendum #1, which are made a part of this bid. NOTE: To avoid disqualification, this Addendum 1 (and any other addenda) must be signed by an authorized representative of the bidding firm in the space provided and must be submitted with your firm’s sealed proposal. Failure to return this addendum, duly signed, may be cause for rejection of the bid. ALL ADDENDA SHOULD BE SIGNED AND PLACED IN SEQUENTIAL ORDER AND ATTACHED TO THE FRONT OF THE BID PACKAGE, COMPLETE WITH ALL REQUIRED DOCUMENTS.

CONTRACTOR BUSINESS NAME

Dan Marran, C.P.M., CPPO
Contracts and Risk Manager

X _____
Authorized Signature

March 24, 2017

Printed Name of Person Signing

EQUIPMENT: K-KITCHEN, L-LIGHTING, H-HEAT, M-MOTOR, H-H MOTOR (LARGEST), R-RECEPTS										LOCATION: ELECTRICAL ROOM			
DF	DESCRIPTION	LOAD	BKR	CIR	A	B	C	CIR	BKR	LOAD	DESCRIPTION	DF	
	LIGHTS 112, 113		20/1	1	0			2	20/1		LIGHTS 130, 129		
	LIGHTS 116, 117		20/1	3		0		4	20/1		LIGHTS 131		
	LIGHTS 118, 119		20/1	5				6	20/1		LIGHTS 105		
	LIGHTS 121, 122		20/1	7	0			8	20/1		LIGHTS 101		
	LIGHTS 104		20/1	9		0		10	20/1		LIGHTS 133, 134, 103		
	LIGHTS 104		20/1	11			0	12	20/1		LIGHTS 101		
	LIGHTS 123, 124		20/1	13	0			14	20/1		LIGHTS 139, 140		
	LIGHTS CORRIDOR		20/1	15		0		16	20/1		LIGHTS 135, 136		
	LIGHTS 135		20/1	17			0	18	20/1		LIGHTS 141, 142		
	LIGHTS 135		20/1	19	0			20	20/1		EXIT LIGHTS		
	TELEPHONE BOARD		20/1	21		0		22	20/1		RECEPTS, 100A, 135		
	CLERKS RECEPTACLES		20/1	23			0	24	20/1		RECEPTS, 135 COUNTER		
	JUDGE RECEPTACLES		20/1	25	0			26	20/1		RECEPTS, 135		
	VAULT		20/1	27		0		28	20/1		RECEPTS, 113, 112		
	JUDGES OFFICE DEPT. 1		20/1	29			0	30	20/1		RECEPTS, 110		
	LIGHTS 123, 124		20/1	31	0			32	20/1		RECEPTS, 105		
	LIGHTS 131		20/1	33		0		34	20/1		RECEPTS, 105		
R	SECURITY	1200	20/1	35				36	20/1		RECEPTS, 142		
			30	37	0			38	20/1		MARSHALLS OFFICE		
			-	39		1260		40	20/1	1260	SECURITY	R	
	HEATER JUDGES OFFICE		3	41			0	42	50/1		FRONT DESK PLUGS/UPS		
							0	1260					
AMPS:		225			NEUTRAL BUS:		100%	CON. KVA:		2.5			
VOLTAGE:		208			GROUND BUS:		STANDARD	CON. AMPS:		6.8			
PHASE / WIRE:		3-PH, 4W			AIC RATING:			NET KVA:		2.5			
MAIN:					NEMA RATING:		1	NET AMPS:		6.8			
LUGS:		MLO			PANEL:			Notes:					
MOUNTING:		FLUSH			(E) A			CHALLENGER PANELBOARD WITH					
BUS:		COPPER						SYLVANIA CIRCUIT BREAKERS					
DOOR:		STANDARD											

LIGHTING FIXTURE SCHEDULE			
LIGHTING FIXTURE CATALOG NUMBERS ARE SERIES TYPE ONLY. PROVIDE TRIMS, BALLASTS, MOUNTING EQUIPMENT, FITTINGS AND LAMPS AS REQUIRED BY THE SPECIFICATIONS AND PROJECT CONDITIONS FOR A COMPLETE INSTALLATION. THIS IS NOT A STANDALONE SCHEDULE AND FIXTURES MUST INCORPORATE ALL WORK INDICATED OR IMPLIED THROUGHOUT THE DRAWINGS AND SPECIFICATIONS.			
TYPE	SYMBOL	SKETCH	DESCRIPTION AND MANUFACTURER
L1	○		4" RECESSED DOWNLIGHT WITH FINISH, 0-10V DIMMING. PROVIDE WITH 4" RECESSED HOUSING. MOUNTING HEIGHT: RECESSED LAMP: 14W, 800 LUMEN LED VOLTAGE: 120V MANUFACTURER: NORA: NHOICD-4BLE4 / NIO-4-R-NDC-40-60-WW-HW-ELV SUBSTITUTIONS: ○ OR EQUAL ● SUBJECT TO REVIEW ○ NO EQUAL
L2	▮		LED 2'x2' RECESSED LUMINAIRE, SILVER REFLECTOR, FLUSH STEEL FRAME, METAL DIFFUSER, ROUND HOLES AND 1-410V DIMMING DRIVER. MOUNTING HEIGHT: RECESSED, T-BAR LAMP: LED, 3150 LUMEN VOLTAGE: 120V MANUFACTURER: LUMENACRAFT: 22TF 35W 40K UNV 10V SR SUBSTITUTIONS: ○ OR EQUAL ● SUBJECT TO REVIEW ○ NO EQUAL
L2X	▮		LED 2'x2' RECESSED LUMINAIRE, SILVER REFLECTOR, FLUSH STEEL FRAME, METAL DIFFUSER, ROUND HOLES, 1-10V DIMMING DRIVER AND EMERGENCY BATTERY PACK. MOUNTING HEIGHT: RECESSED, T-BAR LAMP: LED, 3150 LUMEN VOLTAGE: 120V MANUFACTURER: LUMENACRAFT: 22TF 35W 40K UNV 10V EMB SR SUBSTITUTIONS: ○ OR EQUAL ● SUBJECT TO REVIEW ○ NO EQUAL
L3	▮		LED 2'x4' RECESSED LUMINAIRE, SILVER REFLECTOR, FLUSH STEEL FRAME, METAL DIFFUSER, ROUND HOLES AND 1-10V DIMMING DRIVER. MOUNTING HEIGHT: RECESSED, T-BAR LAMP: LED, 4200 LUMEN VOLTAGE: 120V MANUFACTURER: LUMENACRAFT: 24TF 42W 40K UNV 10V SR SUBSTITUTIONS: ○ OR EQUAL ● SUBJECT TO REVIEW ○ NO EQUAL
X1	EXIT		LED, COMBINATION EMERGENCY EGRESS FIXTURE AND EXIT SIGN WITH GREEN STENCIL LETTERS, INTEGRAL BATTERY AND CHARGER. MOUNTING HEIGHT: ABOVE DOOR LAMP: INCLUDED VOLTAGE: 120/277 MANUFACTURER: LITHONIA: LHOM S W 3 G 120/277 N SUBSTITUTIONS: ○ OR EQUAL ● SUBJECT TO REVIEW ○ NO EQUAL
X2	EXIT		EXTERIOR RATED EMERGENCY LIGHTING UNIT, WHITE HOUSING WITH DUAL HEADS. PROVIDE 90 MINUTE BATTERY PACK. MOUNTING HEIGHT: +/- 8'-0" AFF LAMP: INCLUDED VOLTAGE: MVOLT MANUFACTURER: LITHONIA: AFNX SERIES SUBSTITUTIONS: ● OR EQUAL ○ SUBJECT TO REVIEW ○ NO EQUAL
X3	EXIT		EXIT SIGN WITH WHITE HOUSING AND GREEN LED LETTERING. PROVIDE 90 MINUTE BATTERY PACK. MOUNTING HEIGHT: ABOVE DOOR/CEILING LAMP: INCLUDED VOLTAGE: MVOLT MANUFACTURER: LITHONIA: LQM SERIES SUBSTITUTIONS: ○ OR EQUAL ● SUBJECT TO REVIEW ○ NO EQUAL
X4	EXIT		EXIT SIGN WITH WHITE HOUSING AND GREEN LED LETTERING. PROVIDE 90 MINUTE BATTERY PACK. MOUNTING HEIGHT: ABOVE DOOR/CEILING LAMP: INCLUDED VOLTAGE: MVOLT MANUFACTURER: LITHONIA: LQM SERIES SUBSTITUTIONS: ○ OR EQUAL ● SUBJECT TO REVIEW ○ NO EQUAL
X5	EXIT		EMERGENCY LIGHTING UNIT WITH DUAL HEADS AND 90 MINUTE BATTERY PACK. MOUNTING HEIGHT: +/- 7'-6" AFF LAMP: INCLUDED VOLTAGE: MVOLT MANUFACTURER: LITHONIA: ELM2 SERIES SUBSTITUTIONS: ○ OR EQUAL ● SUBJECT TO REVIEW ○ NO EQUAL

COMcheck Software Version 4.0.2.8
Interior Lighting Compliance Certificate

Project Information
Energy Code: 2012 IECC
Project Title: Sparks Municipal Court Alteration
Project Type: Alteration

Construction Site: 1450 C Street Sparks, NV 89431
Owner/Agent:
Designer/Contractor: JP Engineering, LLC 15097 Double R Blvd. Reno, NV 89521 775-852-2337

Area Category	B Floor Area (ft2)	C Allowed Watts / ft2	D Allowed Watts (B X C)
1-Lobby (Common Space Types:Lobby)	2172	1.10	2389
Total Allowed Watts =			2389

Fixture ID : Description / Lamp / Wattage Per Lamp / Ballast	B Lamps/ Fixture	C # of Fixtures	D Fixture Watt. (C X D)	E (C X D)
Lobby (Common Space Types:Lobby 2172 sq.ft.)				
LED 1: L1: See Fixture Schedule: LED PAR 8W:	1	9	8	72
LED 2: L2: See Fixture Schedule: Other:	1	17	35	595
LED 3: L2X: See Fixture Schedule: Other:	1	7	35	245
LED 4: L3: See Fixture Schedule: Other:	1	5	42	210
Total Proposed Watts =			1122	

Interior Lighting PASSES

Interior Lighting Compliance Statement
Compliance Statement: The proposed interior lighting alteration project represented in this document is consistent with the building plans, specifications, and other calculations submitted with this permit application. The proposed interior lighting systems have been designed to meet the 2012 IECC requirements in COMcheck Version 4.0.2.8 and to comply with the mandatory requirements listed in the Inspection Checklist.

Name - Title _____ Signature _____ Date _____

Project Title: Sparks Municipal Court
Data filename: j:\2014\14041 - Sparks Muni Court Entry\Phase II\14041 - Lighting Compliance.cck
Report date: 01/09/17
Page 1 of 6



△	Date	Revision
1	1-10-17	Plan Review Revisions
	1-16-17	Bid Documents
A	3-23-17	Electrical Addendum

#14041

10597 Double R Blvd.
Reno, Nevada 89521
P: 775.852.2337
F: 775.852.2352

Consultant

H+K ARCHITECTS
5485 Reno Corporate Drive, Suite 100
Reno, Nevada 89511-2262
P 775+332+6640
F 775+332+6642
hkarchitects.com

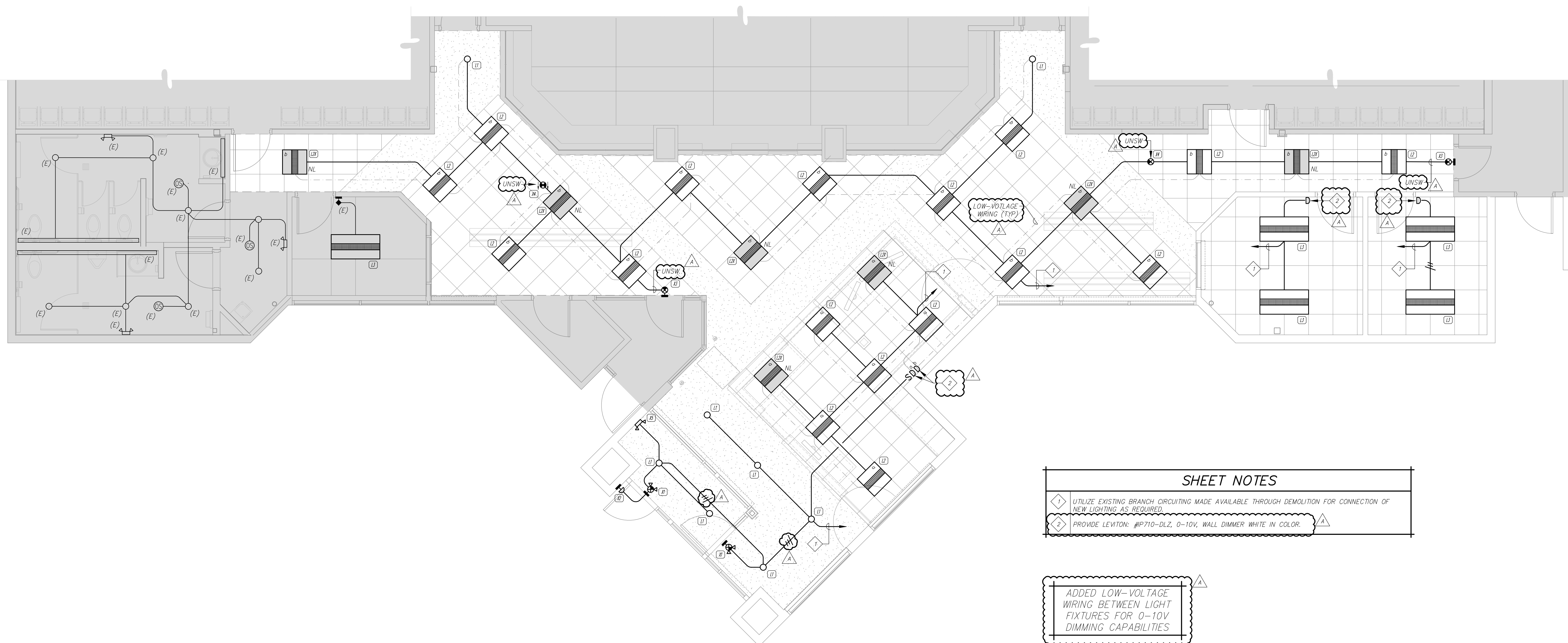
Sparks Municipal Court Security Entrance Remodel

1450 C Street
Sparks, Nevada 89431

ELECTRICAL SCHEDULES AND LIGHTING COMPLIANCE

January 16, 2017
H+K Project No.: 1628

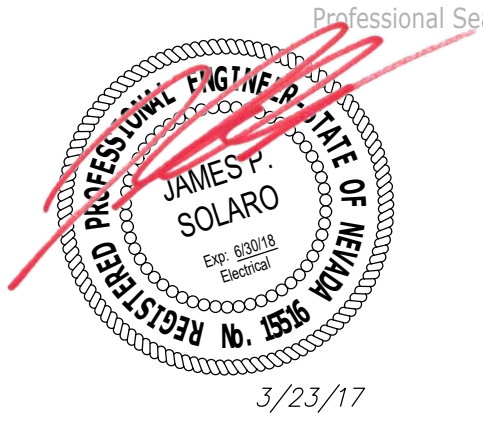
E002



SHEET NOTES	
1	UTILIZE EXISTING BRANCH CIRCUITING MADE AVAILABLE THROUGH DEMOLITION FOR CONNECTION OF NEW LIGHTING AS REQUIRED.
2	PROVIDE LEVITON: #P710-DLZ, 0-10V, WALL DIMMER WHITE IN COLOR.

ADDED LOW-VOLTAGE WIRING BETWEEN LIGHT FIXTURES FOR 0-10V DIMMING CAPABILITIES

A	LIGHTING PLAN	
E301	SCALE: 1/4" = 1'-0"	



△	Date	Revision
1	1-10-17	Plan Review Revisions
	1-16-17	Bid Documents
A	3-23-17	Electrical Addendum

© Copyright H + K Architects

#14041

10597 Double R Blvd.
Reno, Nevada 89521

P: 775.852.2337
F: 775.852.2352

Consultant

H+K ARCHITECTS
5485 Reno Corporate Drive, Suite 100
Reno, Nevada 89511-2262

P 775+332+6640
F 775+332+6642
hkarchitects.com

**Sparks Municipal Court
Security Entrance Remodel**

1450 C Street
Sparks, Nevada 89431

LIGHTING PLAN

January 16, 2017
H+K Project No.: 1628

E301

