

CITY OF SPARKS

SANITARY SEWER IMPROVEMENT PROJECT - McCARRAN BLVD. & PRATER WAY

BID #24/25-0012, PWP #WA-2025-205

FEBRUARY 2025

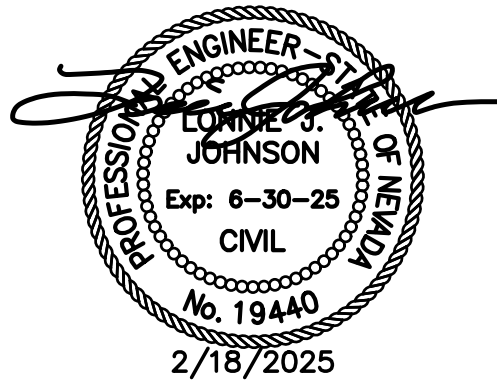
BASIS OF BEARINGS:

NEVADA STATE PLANE COORDINATE SYSTEM, NAD 83/94, WEST ZONE,
MODIFIED BY A GRID TO GROUND COMBINED SCALE FACTOR OF
1.000197939 BASED ON THE WASHOE COUNTY GPS NETWORK.

BASIS OF ELEVATIONS (VERTICAL DATUM):

NAVD 88 BASED ON CITY OF SPARKS BENCHMARK #77 ELEVATION
4407.56.

PREPARED & SUBMITTED BY:

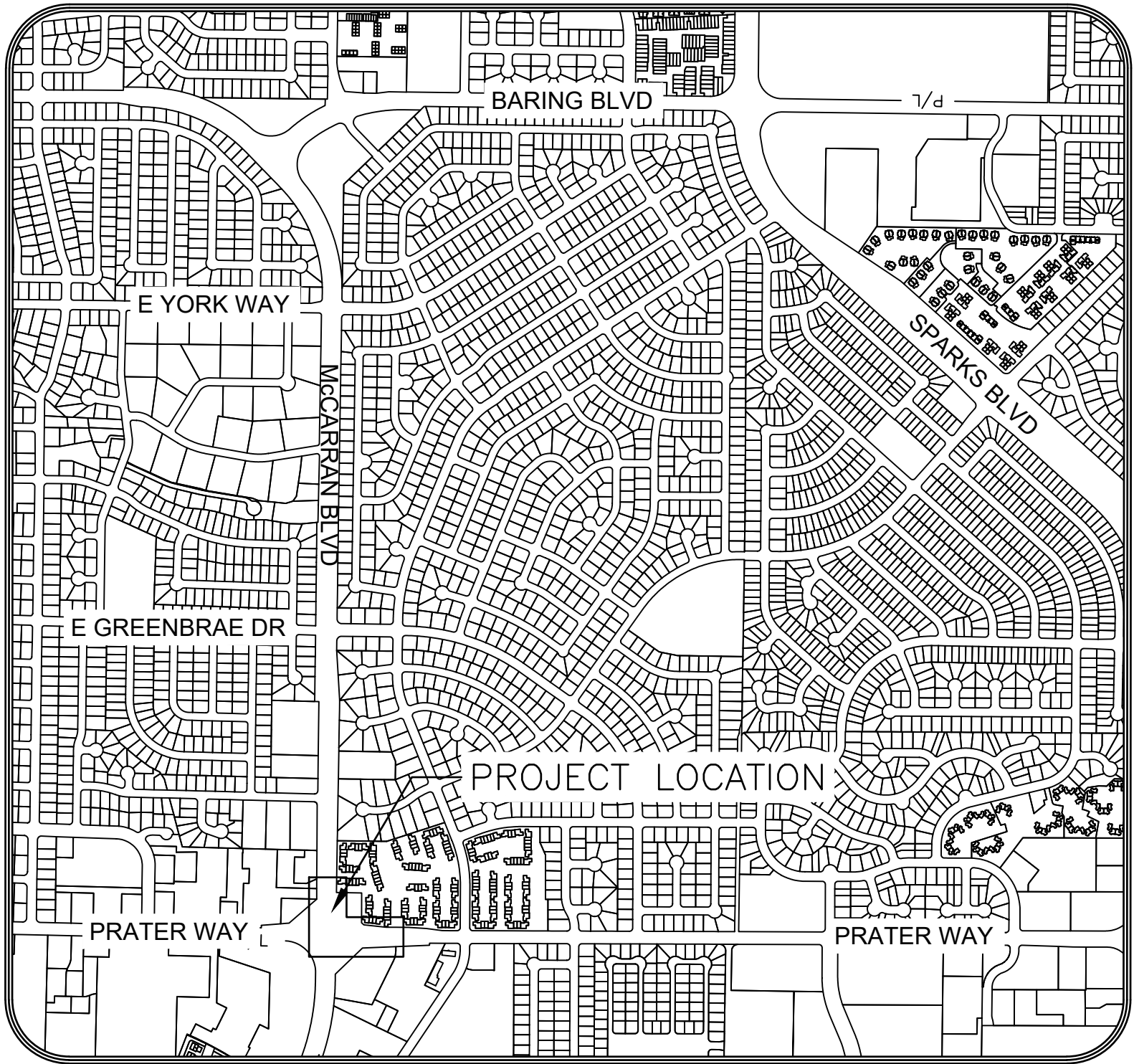


LONNIE J. JOHNSON, PE
PROJECT MANAGER

DATE



PROJECT LOCATION MAP
SECTION 3, TOWNSHIP 19 NORTH, RANGE 20 EAST
SECTION 4, TOWNSHIP 19 NORTH, RANGE 20 EAST



INDEX OF SHEETS		
NUMBER	DESIGNATION	TITLE
1	G-001	COVER SHEET
2	G-002	GENERAL NOTES
4	G-003	LEGENDS AND ABBREVIATIONS
5	C-001	SEWER SITE INDEX
6	C-201	PRATER SEWER PLAN & PROFILE - STA. 0+00 TO STA. 3+00
7	C-401	PRATER STREET RESTORATION - STA. 0+00 TO STA. 3+00
8	C-501	CITY OF SPARKS DETAILS 1
9	C-502	CITY OF SPARKS DETAILS 2
10	C-503	CITY OF SPARKS DETAILS 3
11	C-504	NDOT DETAILS

PROJECT No. 49-23-033

CITY OF SPARKS OFFICIALS:

ED LAWSON	MAYOR
DONALD ABO TT	COUNCIL MEMBER WARD 1
DIAN VANDERWELL	COUNCIL MEMBER WARD 2
PAUL ANDERSON	COUNCIL MEMBER WARD 3
CHARLENE BYBEE	COUNCIL MEMBER WARD 4
JOE RODRIGUEZ	COUNCIL MEMBER WARD 5
DION LOUTHAN	CITY MANAGER



J-U-B ENGINEERS, INC.
5190 Neil Road, Suite 500, Reno, NV 89502
p 775 852 1440 w www.jub.com



THE
LANGDON
GROUP



GATEWAY
MAPPING
INC.

J-U-B FAMILY OF COMPANIES

CAUTION – NOTICE TO CONTRACTOR

1. THE CONTRACTOR IS SPECIFICALLY CAUTIONED THAT THE LOCATION AND/OR ELEVATION OF EXISTING UTILITIES AND FEATURES AS SHOWN ON THESE PLANS IS BASED ON THE BEST INFORMATION AVAILABLE TO THE ENGINEER. THE INFORMATION IS NOT TO BE RELIED ON AS BEING EXACT OR COMPLETE.
2. IT SHALL BE THE CONTRACTOR'S RESPONSIBILITY TO VERIFY THESE LOCATIONS AND/OR ELEVATIONS AT THE PROPOSED POINTS OF CONNECTION AND IN AREAS OF POSSIBLE CONFLICT PRIOR TO BEGINNING CONSTRUCTION. SHOULD THE CONTRACTOR FIND ANY DISCREPANCIES BETWEEN THE CONDITIONS EXISTING IN THE FIELD AND THE INFORMATION SHOWN ON THESE DRAWINGS, HE SHALL NOTIFY THE ENGINEER BEFORE PROCEEDING WITH CONSTRUCTION.
3. IT SHALL BE THE RESPONSIBILITY OF THE CONTRACTOR TO REMOVE OR RELOCATE ALL EXISTING UTILITIES AND FEATURES WHICH CONFLICT WITH THE PROPOSED IMPROVEMENTS SHOWN ON THE PLANS. CONTRACTOR SHALL OBTAIN APPROVALS FROM THE GOVERNING AGENCIES, THE ENGINEER, AND THE UTILITY COMPANIES PRIOR TO SUCH REMOVAL AND/OR RELOCATION.
4. THE CONTRACTOR ASSUMES ALL RISK FOR ANY CONSTRUCTION PERFORMED WITH PRELIMINARY OR NONAPPROVED PLANS.
5. CONTRACTOR TO PROVIDE TRAFFIC CONTROL IN CONFORMANCE WITH THE LATEST EDITION OF MUTCD WHENEVER CONSTRUCTION IS IN PROGRESS WITHIN THE PUBLIC TRAVEL WAY.

REUSE OF DOCUMENTS

J-U-B grants to CLIENT a nonexclusive, non-transferable license to use the Drawings, Specifications and/or Contract Documents (Documents) as follows:

CLIENT may make and retain copies of the Documents for reference, but J-U-B shall retain all common law, statutory and other reserved rights, including the copyright thereto, and the same shall not be reused on this Project or any other Project without J-U-B's prior written consent. Distribution of Documents to meet regulatory or permitting requirements, or for similar purposes, in connection with the Project, including but not limited to distribution to contractors or subcontractors for the performance of their work, is not to be construed as publication adversely affecting the reserved rights of J-U-B. The Documents are not intended for use in creating dtm for grading or earthwork, survey staking layout (unless specifically identified as such in the documents), or property boundary layouts.

Any reuse without written consent by J-U-B, or without verification or adoption by J-U-B for the specific purpose intended by the reuse, will be at CLIENT's sole risk and without liability or legal exposure to J-U-B. The CLIENT shall release, defend, indemnify, and hold J-U-B harmless from any claims, damages, actions or causes of action, losses, and expenses, including reasonable attorneys' and expert fees, arising out of or resulting from such reuse.

If the Documents are provided in electronic format, the electronic documents are subject to the provisions of J-U-B's "electronic document/data limited license" found at edocs.jub.com

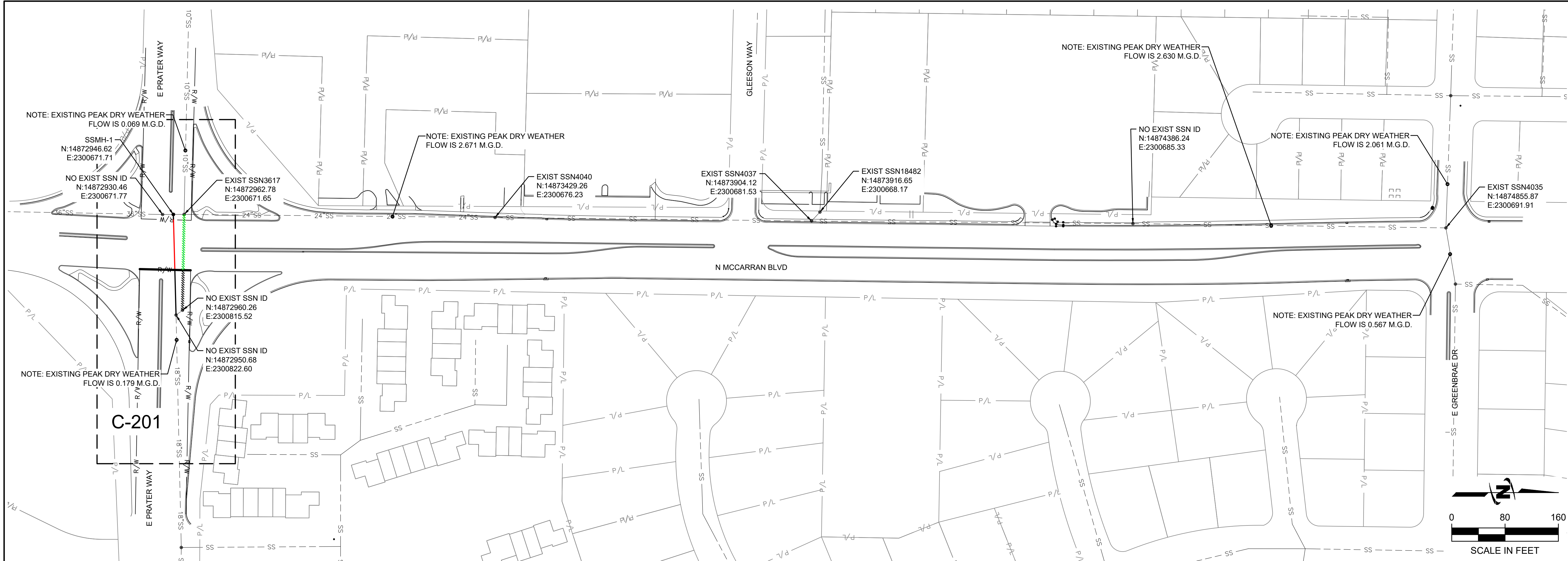
LAST UPDATED: 2/18/2025

DRAWING:

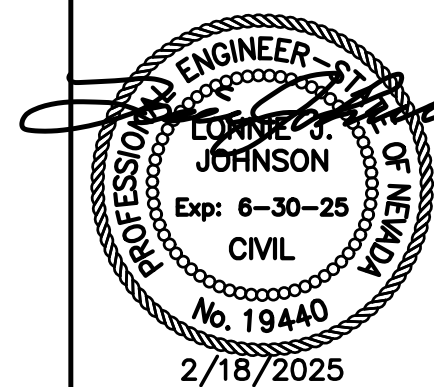
G-001

SHEET: 1 OF 10

APPROVED BY: Amber Sosa DATE: 3/6/2025
AMBER SOSA, P.E.
CITY ENGINEER



JUB ENGINEERS, INC.
5190 Neil Road
Suite 500
Reno, NV 89502
Phone: 775.852.1440
www.jub.com




REUSE OF DRAWINGS

J-U-B SHALL RETAIN ALL COMMON LAW, STATUTORY, COPYRIGHT AND OTHER RESERVED RIGHTS OF THESE DRAWINGS, AND THE SAME SHALL NOT BE REUSED WITHOUT J-U-B'S PRIOR WRITTEN CONSENT. ANY REUSE WITHOUT WRITTEN CONSENT BY J-U-B WILL BE AT CLIENT'S SOLE RISK AND WITHOUT LIABILITY OR LEGAL EXPOSURE TO J-U-B.

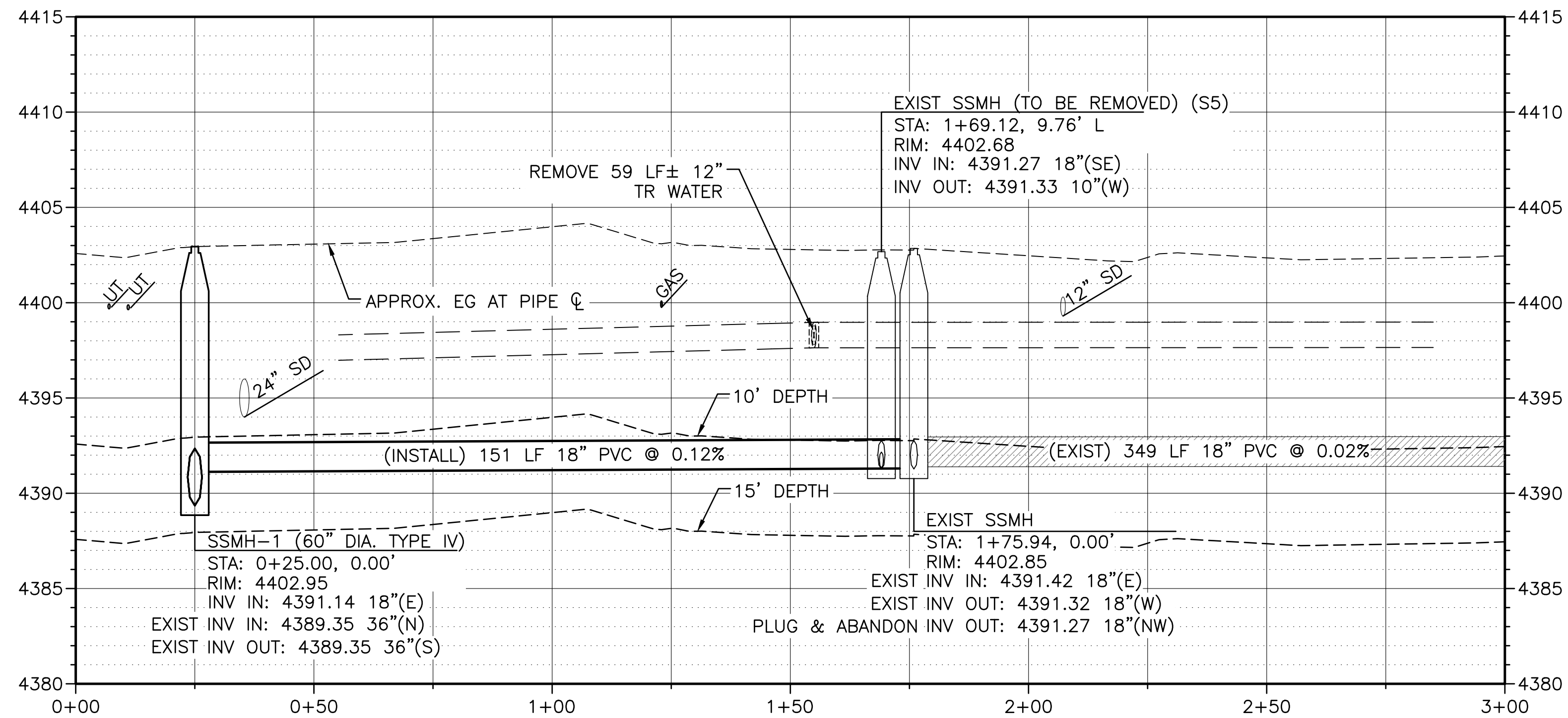
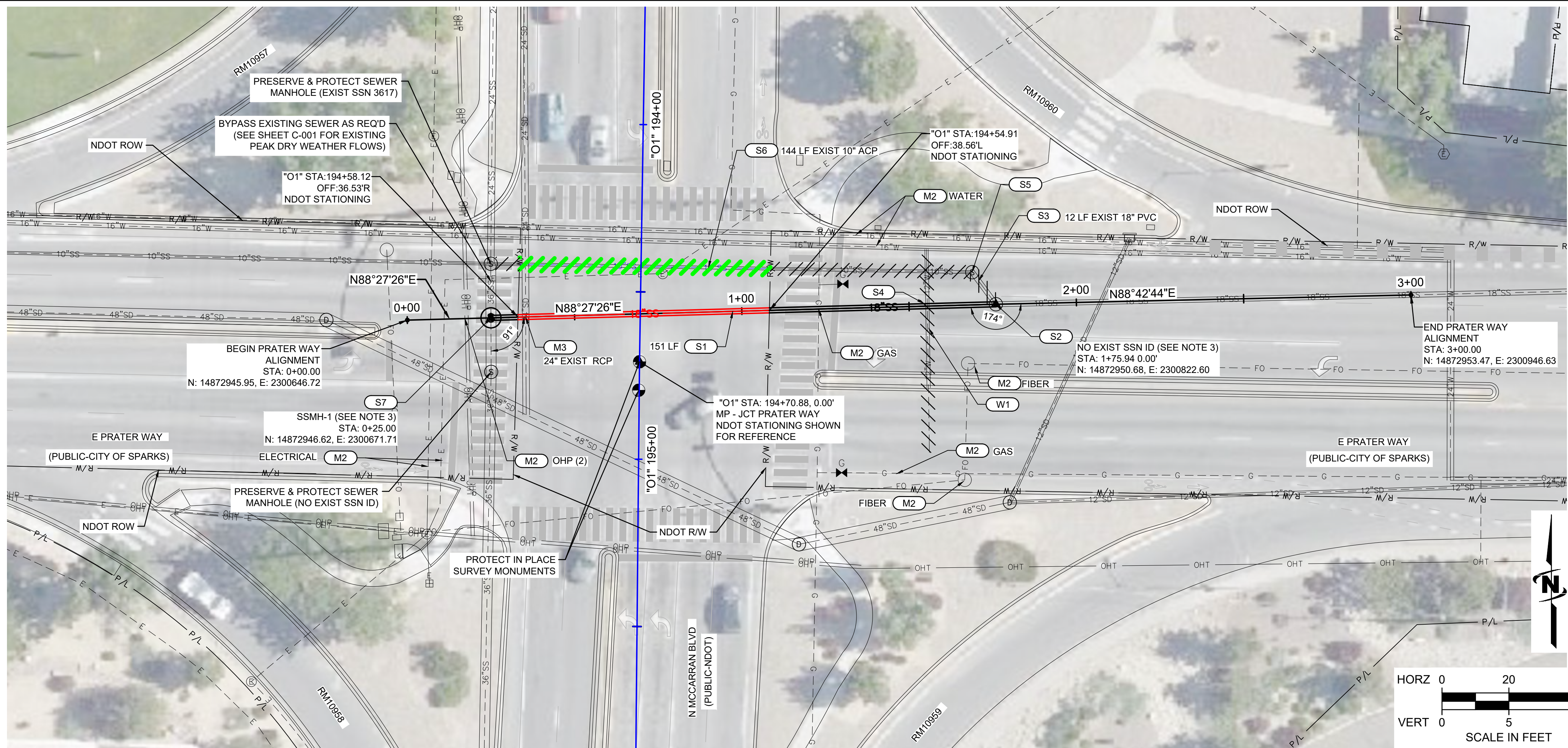
[illegible]

PRATER SEWER CAPACITY IMPROVEMENTS
CITY OF SPARKS

SEWER SITE INDEX

FILE : 49-23-033_C-001_SITEINDEX
SUB PROJ. # : 49-23-033
DRAWN BY: CAS
DESIGN BY: CAS
CHECKED BY: LJJ

AT FULL SIZE, IF NOT ONE
INCH, SCALE ACCORDINGLY
LAST UPDATED: 2/18/2025

DRAWING:
C-001



Know what's below.
Call before you dig.

**CALL 2 BUSINESS DAYS IN ADVANCE BEFORE
YOU DIG, GRADE, OR EXCAVATE FOR THE
MARKING OF UNDERGROUND MEMBER UTILITIES**

KEY NOTES

KEY NOTE	DESCRIPTION
SEWER/UTILITY KEY NOTES	
(S1)	18" PVC ASTM F679, PS 46 GRAVITY SEWER PIPE
(S2)	CONNECT NEW 18" PVC TO EXISTING 18" PVC STUB TO WEST. GROUT FILL AND PLUG NW MH CHANNEL.
(S3)	REMOVE EXISTING 18" PVC
(S4)	POTABLE/NON-POTABLE CROSSING
(S5)	REMOVE EXIST SEWER MANHOLE
(S6)	EXIST SEWER PIPE TO BE LEFT AS DORMANT FACILITY IN PLACE, BACKFILL w/ CELLULAR CONCRETE PER SPECS
(S7)	TYPE IV SEWER MANHOLE (SIZE AS INDICATED IN PROFILE), SEE DETAIL D1, SHEET C-501
MISCELLANEOUS KEY NOTES	
(M1)	RESERVED
(M2)	RETAIN AND PROTECT MISCELLANEOUS ITEM
(M3)	TEMPORARILY REMOVE AND RE-INSTALL MISCELLANEOUS ITEM (INCIDENTAL TO 18" SEWER PIPE)
WATER KEY NOTES	
(W1)	REMOVE 59 LF ABANDONED TRANSITE EX. 12" (ASBESTOS) WATER LINE

NOTES:

1. PIPE LENGTHS AND SLOPES ARE MEASURED FROM CENTER OF MANHOLE TO CENTER OF MANHOLE.
2. PROTECTION OF ALL UTILITIES IS THE SOLE RESPONSIBILITY OF THE CONTRACTOR. THE EXACT LOCATION AND/OR ELEVATION OF EXISTING UTILITIES SHOWN ON THESE DRAWINGS IS APPROXIMATE AND ARE NOT TO BE RELIED ON AS EXACT OR COMPLETE. IT IS THE CONTRACTOR'S SOLE RESPONSIBILITY TO POTHOLE AND VERIFY THE LOCATIONS AND/OR ELEVATIONS PRIOR TO CONSTRUCTION. ANY DISCREPANCIES BETWEEN THE EXISTING CONDITIONS IN THE FIELD AND THE INFORMATION SHOWN ON THESE DRAWINGS SHALL BE BROUGHT TO THE ATTENTION OF THE PROJECT ENGINEER AND CITY OF SPARKS PRIOR TO PROCEEDING WITH CONSTRUCTION.
3. EXISTING SEWER INVERTS ARE APPROXIMATE BASED ON FIELD DATA. CONTRACTOR TO FIELD VERIFY PRIOR TO CONSTRUCTION AND NOTIFY PROJECT ENGINEER OF ANY DISCREPANCIES IMMEDIATELY. ALL EXPLORATORY EXCAVATION AND TEMPORARY SURFACE RESTORATION REQUIRED TO FIELD VERIFY SEWER INVERTS TO BE CONSIDERED INCIDENTAL TO THE PROJECT.
4. ALL WORK SHALL BE CONFINED TO THE RIGHTS-OF-WAYS, PERMANENT EASEMENTS, AND TEMPORARY EASEMENTS SHOWN ON THE PLANS. CONTRACTOR IS RESPONSIBLE FOR SECURING ANY CONSTRUCTION STAGING AREAS AND TEMPORARY CONSTRUCTION EASEMENTS THAT MAY BE REQUIRED TO CONSTRUCT THE PROJECT.
5. ALIGNMENT STATIONING BASED ON CENTERLINE OF GRAVITY SEWER.
6. UNLESS OTHERWISE NOTED, RETAIN AND PROTECT ALL EXISTING FEATURES. REFER TO GENERAL NOTES.
7. ALL EXCESS MATERIAL EXCAVATED AND NOT REUSED MUST BE DISPOSED OF OFFSITE.
8. GRADE ALL STAGING AREAS AND NATURAL GROUND SURFACE REPAIR AREAS TO PREEXISTING GRADES/SLOPES.
9. THE LOCATIONS OF THE SANITARY SEWER SERVICES AS SHOWN (OR NOT) ON THE PLANS WERE TAKEN FROM PIPE GRAPHIC REPORTS AND VIDEO OBTAINED FROM THE CITY OF SPARKS. IT IS THE SOLE RESPONSIBILITY OF THE CONTRACTOR TO LOCATE ALL CLEANOUTS/LATERALS TO VERIFY THE SIZE WHICH TO CONNECT TO THE MAIN LINE IF ANY ARE LOCATED.
10. THE CONTRACTOR SHALL VERIFY THAT ALL SANITARY SEWER LATERALS ARE ACTIVE OR INACTIVE PRIOR TO THE INSTALLATION OF THE MAIN LINE. ALL ACTIVE LATERALS WHERE FLOW IS EVIDENT BY SIMPLE VISUAL INSPECTION SHALL BE DYE TESTED TO IDENTIFY SERVICE ADDRESSES.
11. IF NO INDICATIONS OF FLOW ARE PRESENT, A PUSH TYPE CAMERA WITH VIDEO TAPE INSPECTION CAPABILITY SHALL BE USED IN CONJUNCTION WITH CCTV AND DYE/SMOKE TESTING TO CONFIRM IF LATERAL IS ACTIVE OR INACTIVE. THE CONTRACTOR SHALL MAINTAIN A LOG OF ALL ACTIVE OR INACTIVE LATERALS PRIOR TO RECONNECTION OR ABANDONMENT PER THE SPECIFICATIONS AND AN INSPECTOR SHALL BE PRESENT DURING ALL LATERAL VERIFICATIONS AND CONNECTIONS TO PROVIDE LOCATION MARK UP FOR GPS.

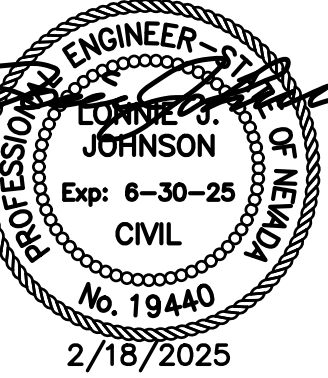


J-U-B ENGINEERS, INC.

5190 Neil Road
J-U-B ENGINEERS, INC.

Suite 500
Reno, NV 89502

Phone: 775.852.1440
www.jub.com



J-U-B SHALL RETAIN ALL COMMON LAW, STATUTORY, COPYRIGHT AND OTHER RESERVED RIGHTS OF THESE DRAWINGS, AND THE SAME SHALL NOT BE REUSED WITHOUT J-U-B'S PRIOR WRITTEN CONSENT. ANY REUSE WITHOUT WRITTEN CONSENT BY J-U-B WILL BE AT CLIENT'S SOLE RISK AND WITHOUT LIABILITY OR LEGAL EXPOSURE TO J-U-B.

[illegible]

PRATER SEWER CAPACITY IMPROVEMENTS

CITY OF SPARKS

PRATER SEWER PLAN & PROFILE

E : 49-23-033_C-201_PLAN&PROFILE

B PROJ. # : 49-23-033

AWN BY: CAS

SIGN BY: CAS

CHECKED BY: LJ
ONE

ONE INCH
AT FULL SIZE IF NOT ONE

AT FULL SIZE, IF NOT ONE
INCH, SCALE ACCORDINGLY

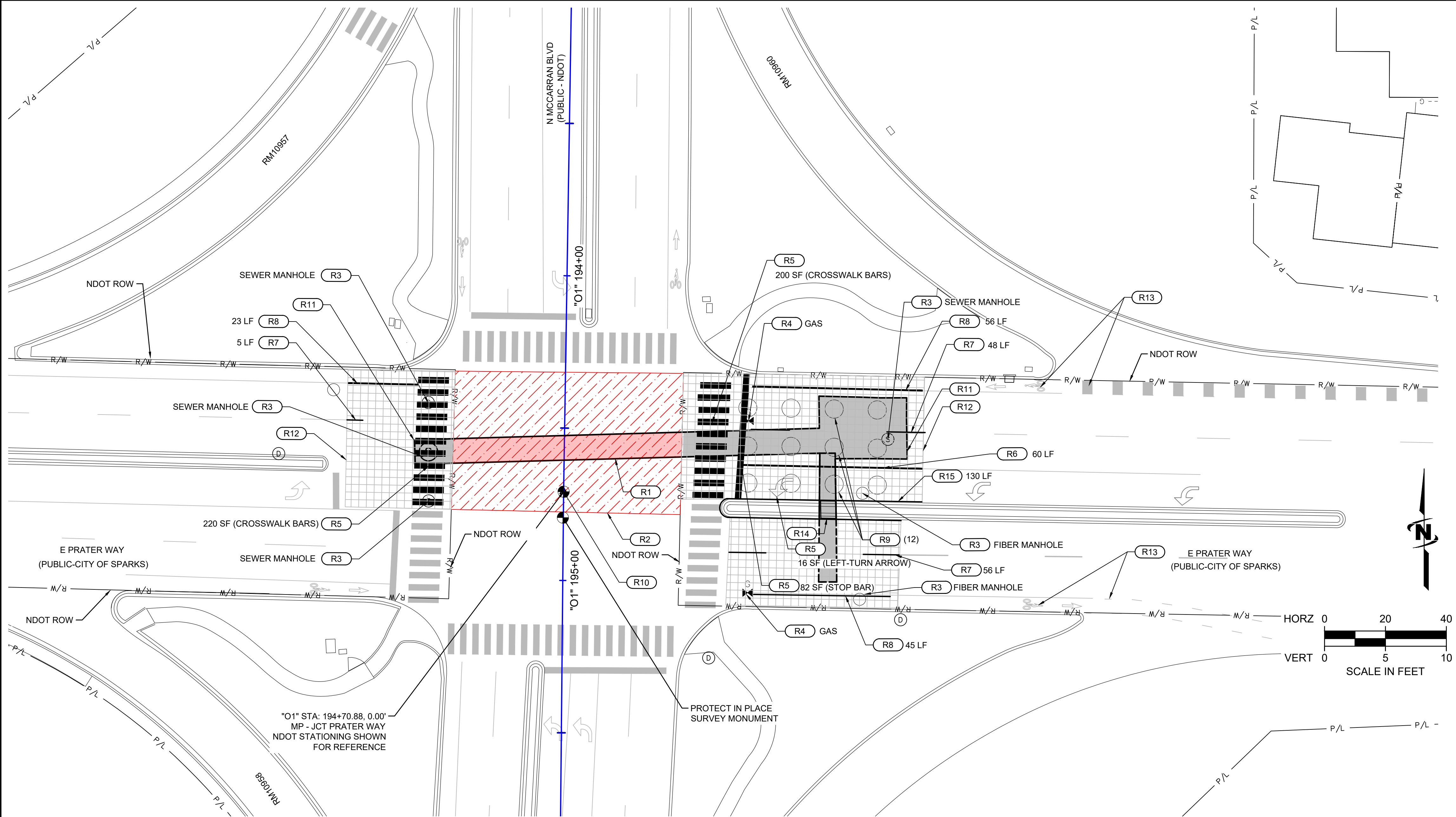
ST UPDATED: 2/18/2025

RAWING:

C-201

SHEET: 5 OF 10

Plot Date: 2/15/2025 2:56 PM Plotted By: Danny Mangano
Date Created: 2/2/2024 JUB-001-CENTRAL-CITY-SPARKS-CITY-PROJECT-SUB-23-033 PRATER-SEWER-CAPACITY-DESIGN-CAD-SHEET-49-23-033 C-401 STREET REST PLANDWG



KEY NOTES	
KEY NOTE	DESCRIPTION
STREET RESTORATION KEY NOTES	
(R1)	PERMANENT BITUMINOUS PAVEMENT PATCH (NDOT), SEE DETAIL A1, SHEET C-504. APPROX. LIMITS SHOWN, CONTRACTOR SHALL FIELD ADJUST
(R2)	1" MILL AND INLAY WITH OPEN GRADE (NDOT, WIDTH VARIES), APPROX. LIMITS SHOWN, CONTRACTOR SHALL FIELD ADJUST
(R3)	ADJUST MANHOLE COLLAR TO FINISHED GRADE, SEE DETAIL C1, SHEET C-501
(R4)	ADJUST WATER COLLAR OR GAS VALVE COLLAR TO FINISHED GRADE, SEE DETAIL C1, SHEET C-502
(R5)	RE-ESTABLISH PREFORMED THERMOPLASTIC PAVEMENT MARKINGS, SEE DETAILS F1, SHEET C-502 & B1, SHEET C-504 (NDOT DETAIL#ST-7)
(R6)	RE-ESTABLISH 8"-WIDE SOLID WHITE PAINTED LINE
(R7)	RE-ESTABLISH 4"-WIDE SKIPPED WHITE PAINTED LINE
(R8)	RE-ESTABLISH 4"-WIDE DOUBLE SOLID WHITE BIKE LANE
(R9)	REPLACE LOOP DETECTOR, SEE DETAIL E1, SHEET C-501 *CONTINGENT ITEM*
(R10)	REFERENCE AND RESET NDOT SURVEY MONUMENT, SEE DETAIL C1, SHEET C-504 (NDOT DETAIL #DM-6)
(R11)	PERMANENT BITUMINOUS PAVEMENT PATCH (SPARKS), SEE DETAIL D1, SHEET C-502. APPROX. LIMITS SHOWN, CONTRACTOR SHALL FIELD ADJUST
(R12)	3" GRIND & OVERLAY (SPARKS), SEE DETAIL D1, SHEET C-502. APPROX. LIMITS SHOWN, CONTRACTOR SHALL FIELD ADJUST
(R13)	RETAIN BIKE LANE STRIPING AND SYMBOL
(R14)	CONCRETE MEDIAN ISLAND PAVING, SEE DETAIL A1& B1 SHEET C/503
(R15)	RE-ESTABLISH 4"WIDE SOLID YELLOW 1' FROM MEDIAN CURB PER DETAIL B1 SHEET C/503

- ALL WORK SHALL BE CONFINED TO THE RIGHTS-OF-WAYS, PERMANENT EASEMENTS, AND TEMPORARY EASEMENTS SHOWN ON THE PLANS. CONTRACTOR IS RESPONSIBLE FOR SECURING ANY CONSTRUCTION STAGING AREAS AND TEMPORARY CONSTRUCTION EASEMENTS THAT MAY BE REQUIRED TO CONSTRUCT THE PROJECT.
- RESERVED.
- UNLESS OTHERWISE NOTED, RETAIN AND PROTECT ALL EXISTING FEATURES. REFER TO GENERAL NOTES.
- GRADE ALL STAGING AREAS AND NATURAL GROUND SURFACE REPAIR AREAS TO PREEXISTING GRADES/SLOPES.
- ALL LONGITUDINAL LINES SHALL BE PAINTED WITH (2) COATS OF NDOT TYPE II PAINT OR APPROVED EQUAL.
- PREFORMED THERMOPLASTIC PAVEMENT MARKINGS SHALL BE INSTALLED PER MANUFACTURER'S RECOMMENDATIONS AND IN ACCORDANCE WITH SECTION 634 OF THE LATEST EDITION OF "STANDARD SPECIFICATIONS FOR ROAD AND BRIDGE CONSTRUCTION" PUBLISHED BY THE STATE OF NEVADA, DEPARTMENT OF TRANSPORTATION (NDOT), EXCEPT ALL THERMOPLASTIC MARKINGS WILL BE 0.090 INCHES THICK. HOT-APPLIED EXTRUDED THERMOPLASTIC SHALL NOT BE USED.
- ALL BIKE LANE MARKINGS SHALL BE PREFORMED THERMOPLASTIC PAVEMENT MARKINGS, 0.075 INCHES THICK.
- ANY REMOVAL OR DAMAGE TO STRIPING OUTSIDE OF LIMITS AS SHOWN, WILL BE RE-STRIPED AT THE CONTRACTOR'S EXPENSE.
- ALL PAVEMENT MARKINGS AND STRIPING SHALL CONFORM TO AASHTO AND MUTCD SPECIFICATIONS AND REQUIREMENTS FOR STREETS AND HIGHWAYS, LATEST EDITION.
- CONTRACTOR SHALL CONSTRUCT MINIMUM AGGREGATE BASE DEPTHS AS SHOWN IN DETAILS OR MATCH EXISTING, WHICHEVER IS GREATER.
- REFERENCE GEOTECHNICAL INVESTIGATION BY CONSTRUCTION MATERIALS ENGINEERS, INC. (CME) DATED AND SIGNED NOVEMBER 5, 2021.

NDOT	
STREET RESTORATION LEGEND	
KEY NOTE	HATCHING
(R1)	
(R2)	

CITY OF SPARKS	
STREET RESTORATION LEGEND	
KEY NOTE	HATCHING
(R11)	
(R12)	

811
Know what's below.
Call before you dig.
CALL 2 BUSINESS DAYS IN ADVANCE BEFORE
YOU DIG, GRADE, OR EXCAVATE FOR THE
MARKING OF UNDERGROUND MEMBER UTILITIES

JUB
J-U-B ENGINEERS, INC.

J-U-B ENGINEERS, INC.
5190 Neil Road
Suite 500
Reno, NV 89502
Phone: 775.852.1440
www.jub.com

L. JOHNSON
Exp: 8-30-25
CIVIL
No. 19440
2/18/2025

REUSE OF DRAWINGS

JUB SHALL RETAIN ALL COMMON LAW, STATUTORY, COPYRIGHT AND OTHER RIGHTS IN THIS DRAWING. NO PART OF THIS DRAWING SHALL BE REPRODUCED OR TRANSMITTED IN ANY FORM OR BY ANY MEANS, ELECTRONIC OR MECHANICAL, INCLUDING PHOTOCOPYING, RECORDING, OR BY ANY INFORMATION STORAGE AND RETRIEVAL SYSTEM, WITHOUT WRITTEN CONSENT BY JUB. ANY REUSE WITHOUT WRITTEN CONSENT BY JUB WILL BE AT CLIENT'S SOLE RISK AND WITHOUT LIABILITY OR LEGAL EXPOSURE TO JUB.

NO.	REVISION	DESCRIPTION	BY	APPROVED	DATE

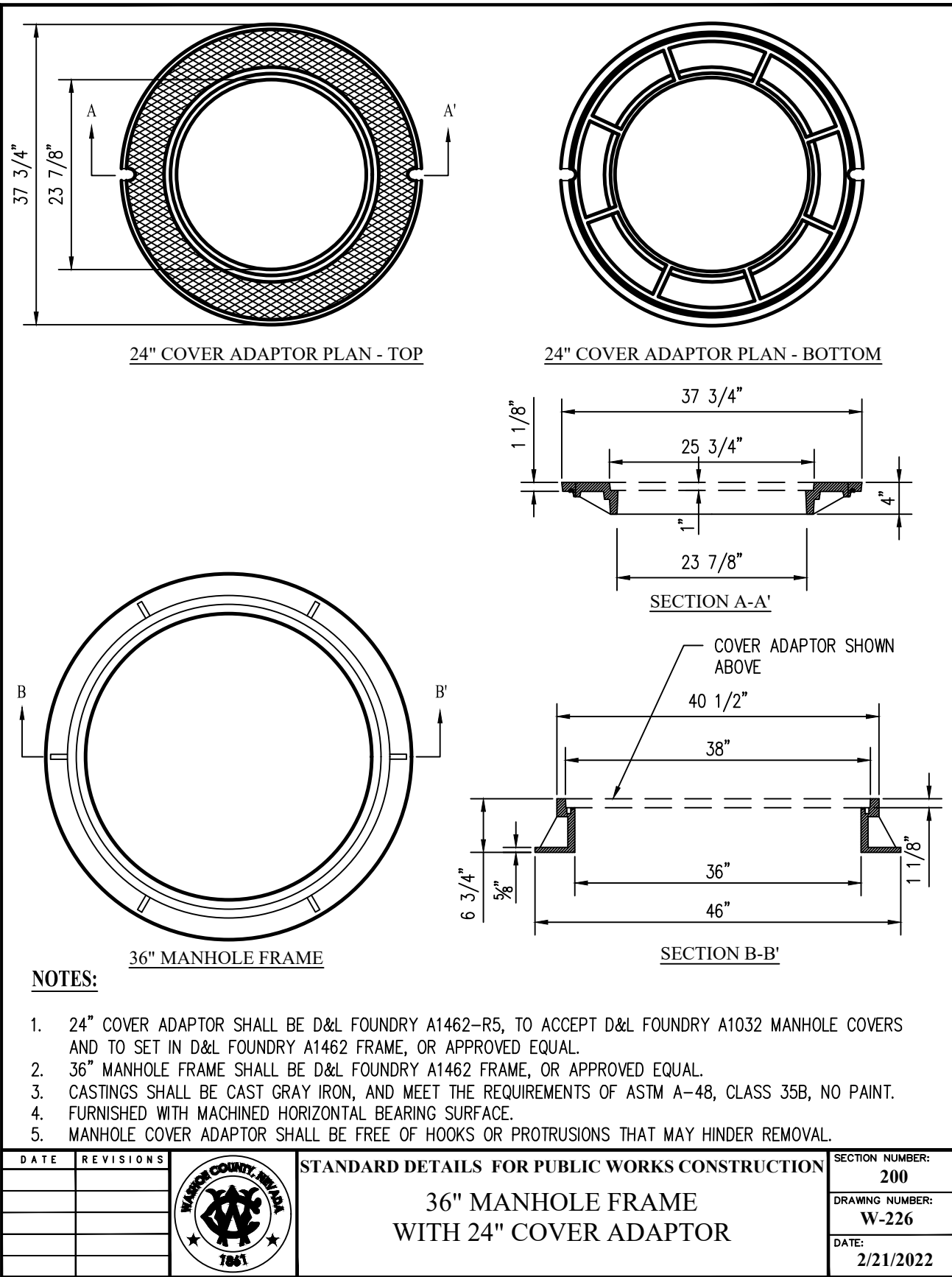
PRATER SEWER CAPACITY IMPROVEMENTS
CITY OF SPARKS

PRATER STREET RESTORATION

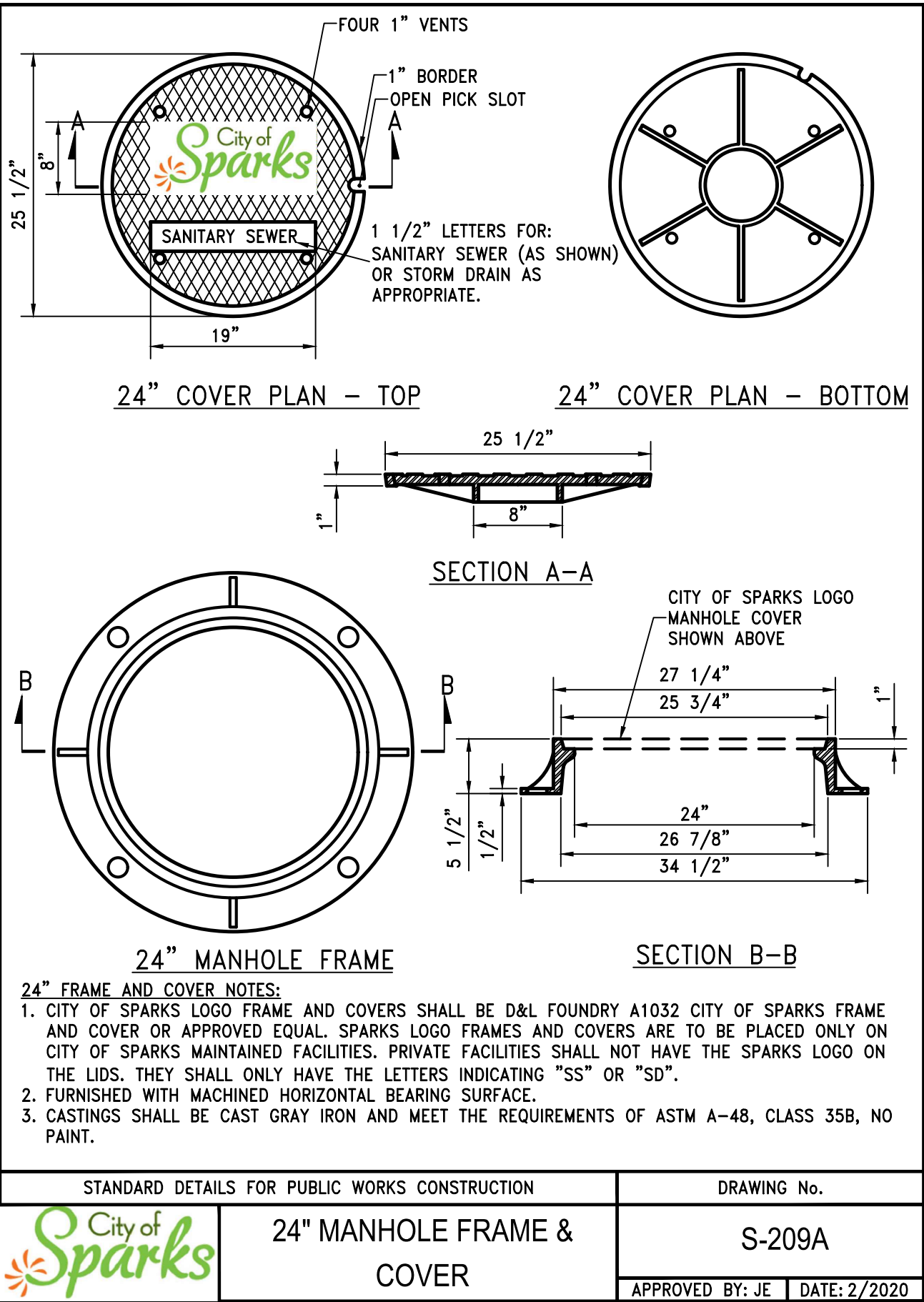
FILE: 49-23-033_C-401 STREET REST PLANDWG
JUB PROJ. #: 49-23-033
DRAWN BY: CAS
DESIGN BY: CAS
CHECKED BY: LUJ
AT FULL SIZE, IF NOT ONE INCH, SCALE ACCORDINGLY
LAST UPDATED: 2/18/2025

DRAWING:
C-401

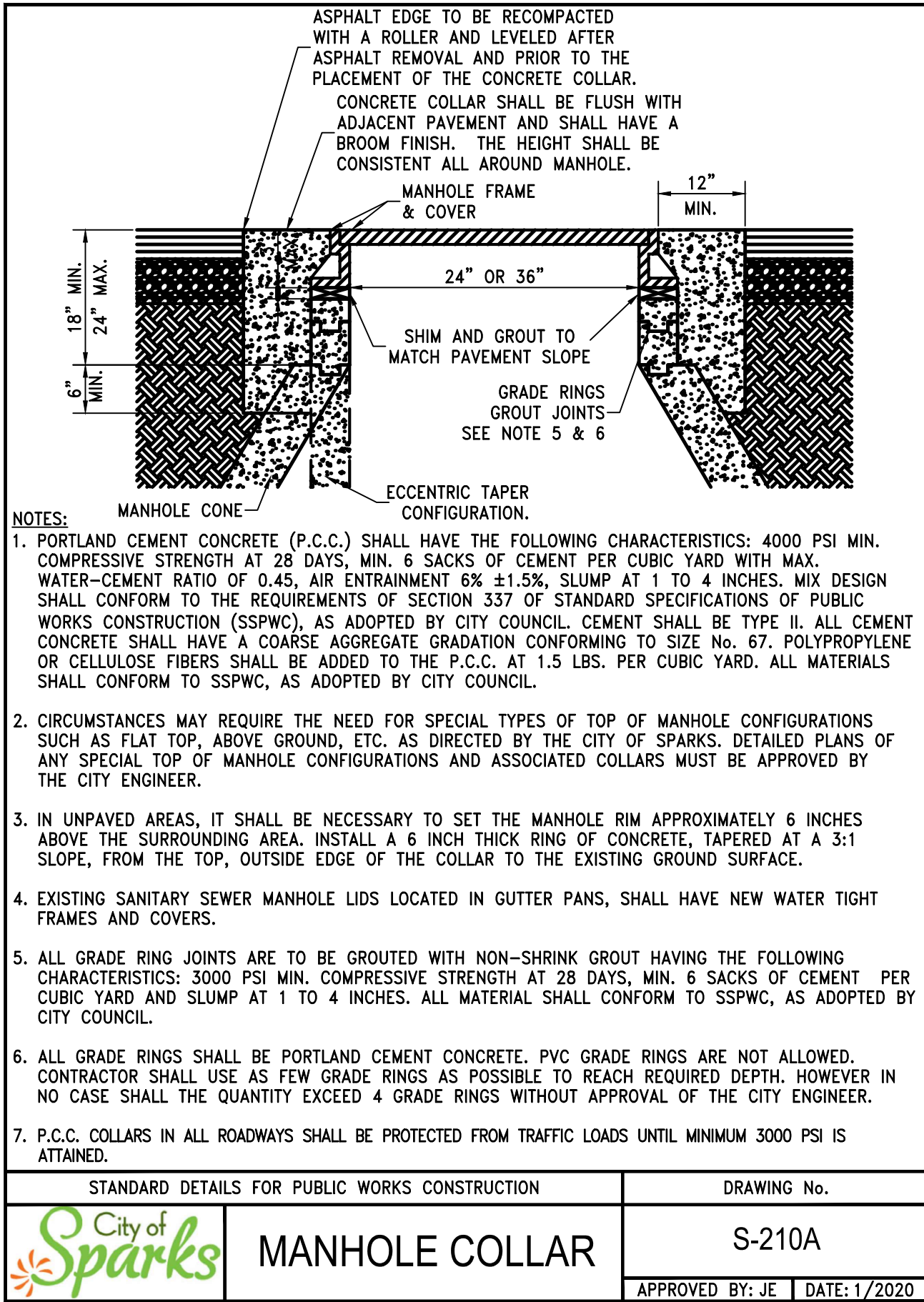
SHEET: 6 OF 10



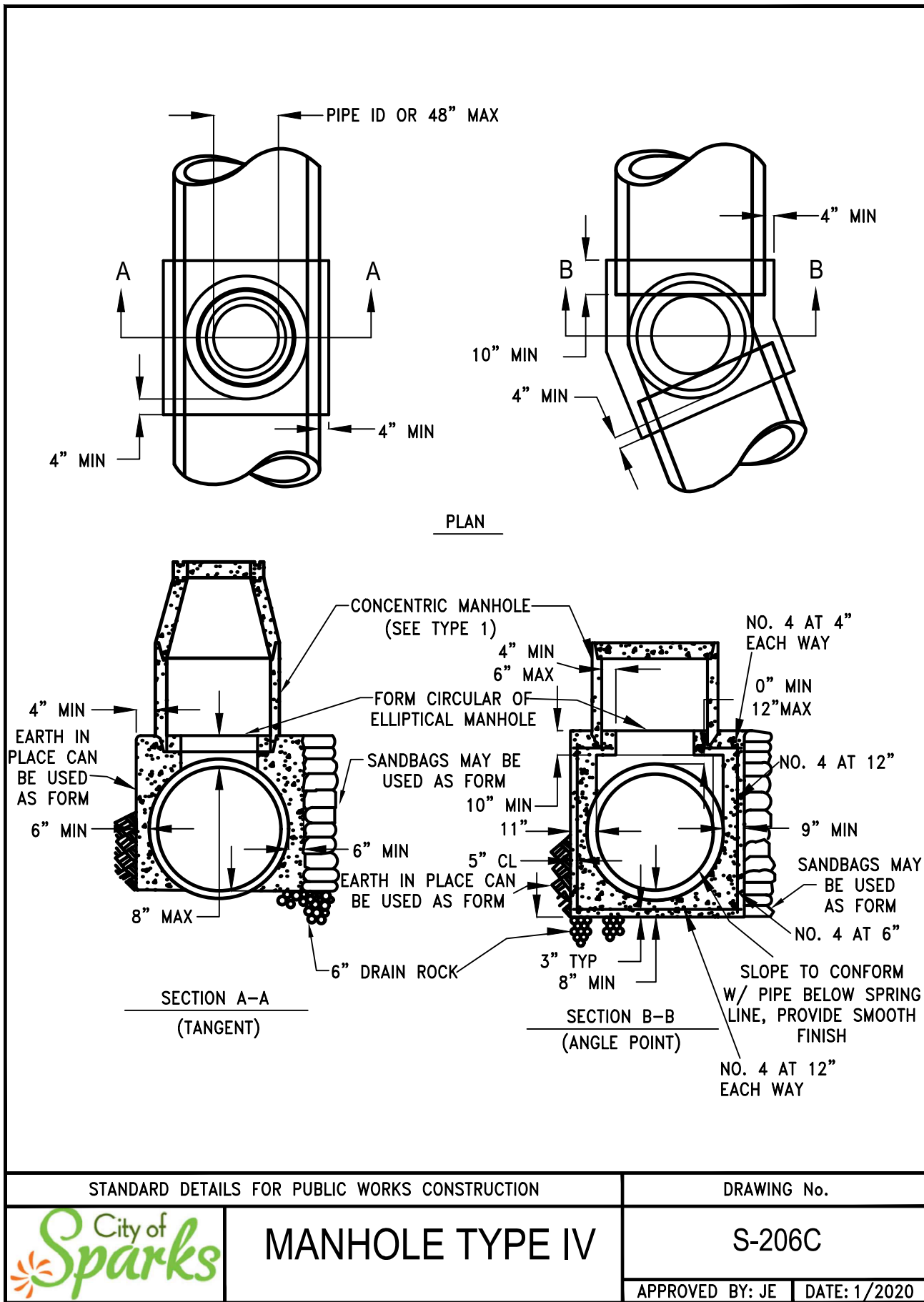
A1 36" MANHOLE FRAME WITH 24" COVER ADAPTOR (W-226)
SCALE:NTS



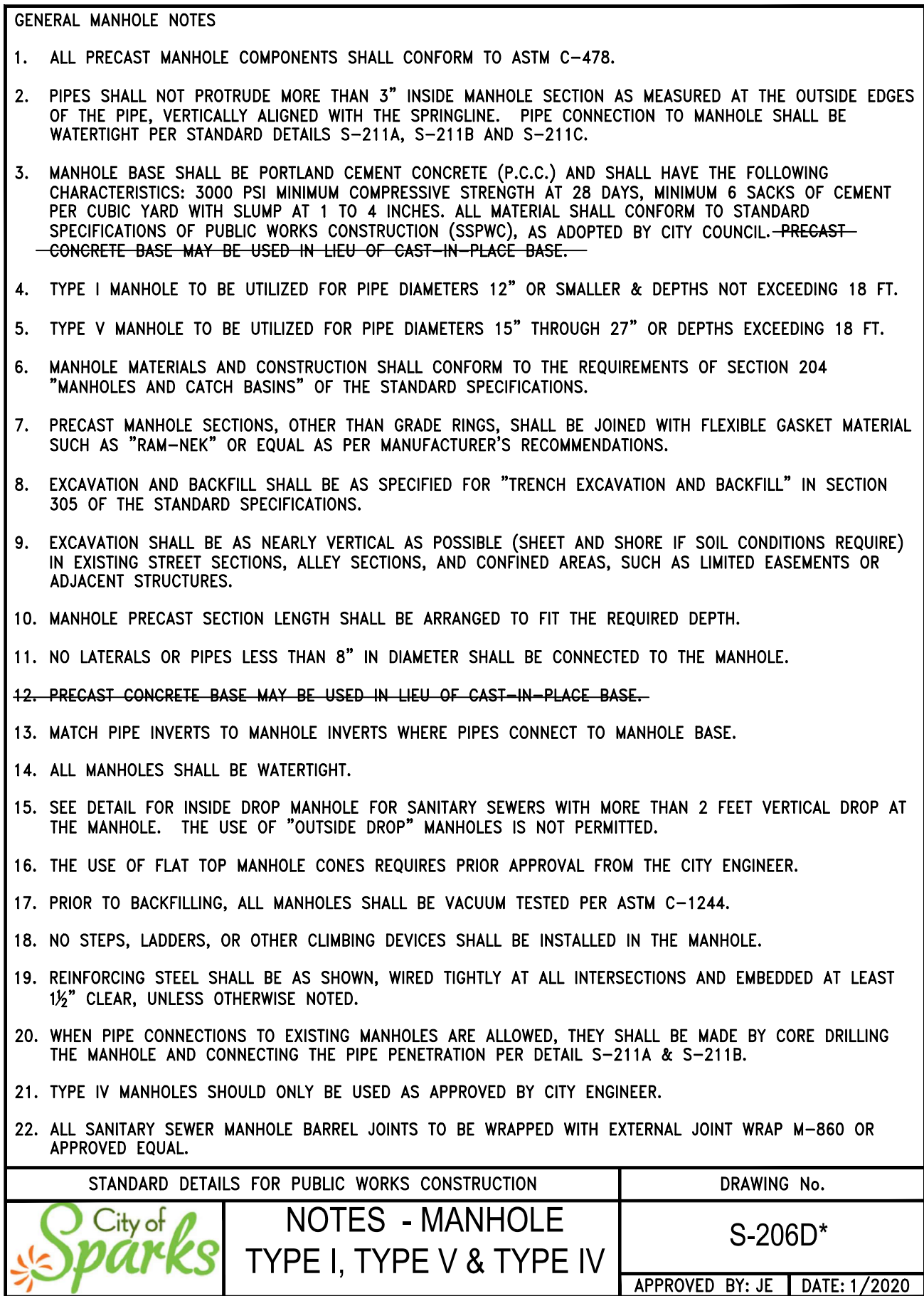
B1 24" MANHOLE FRAME & COVER (S-209A)
SCALE:NTS



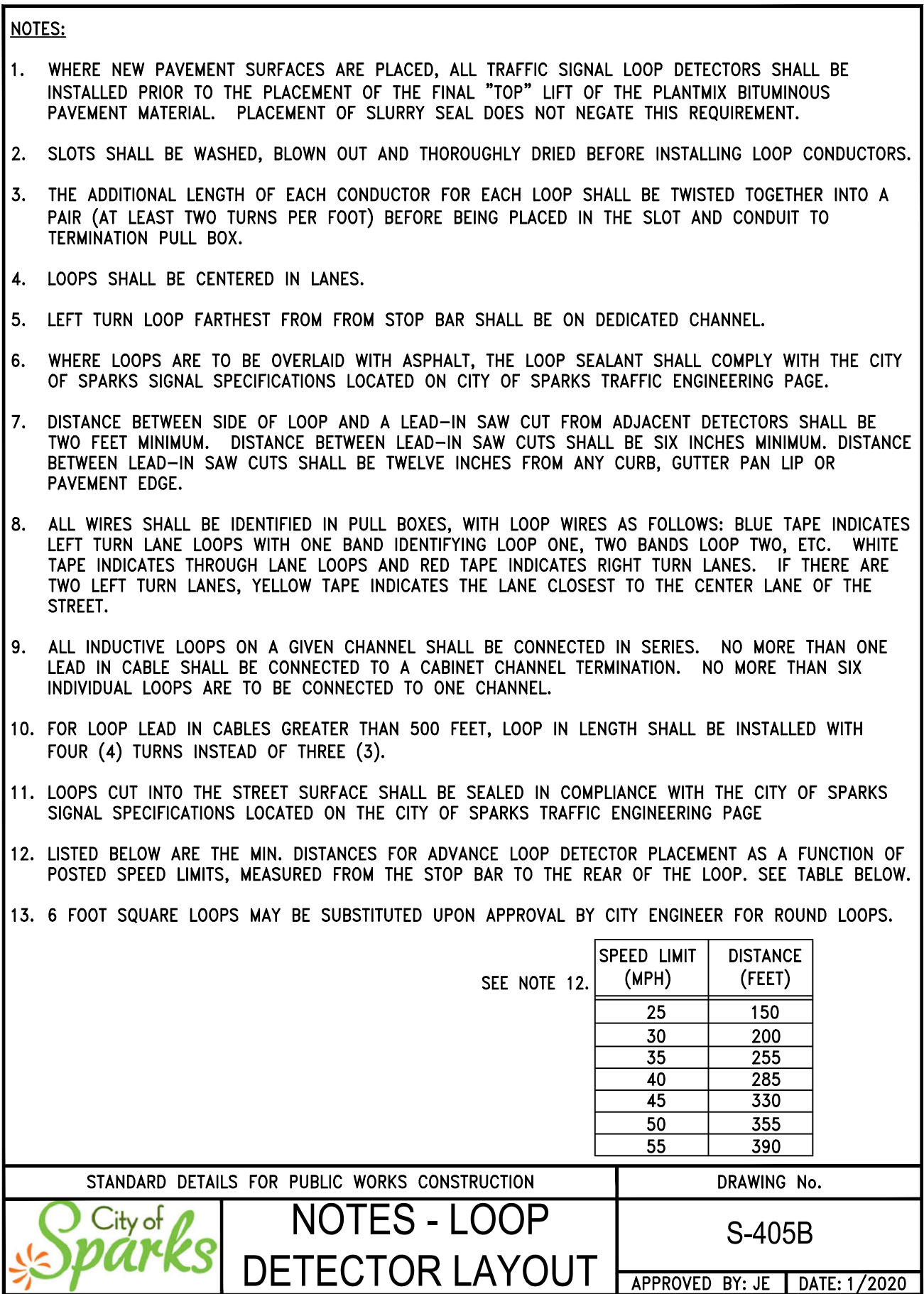
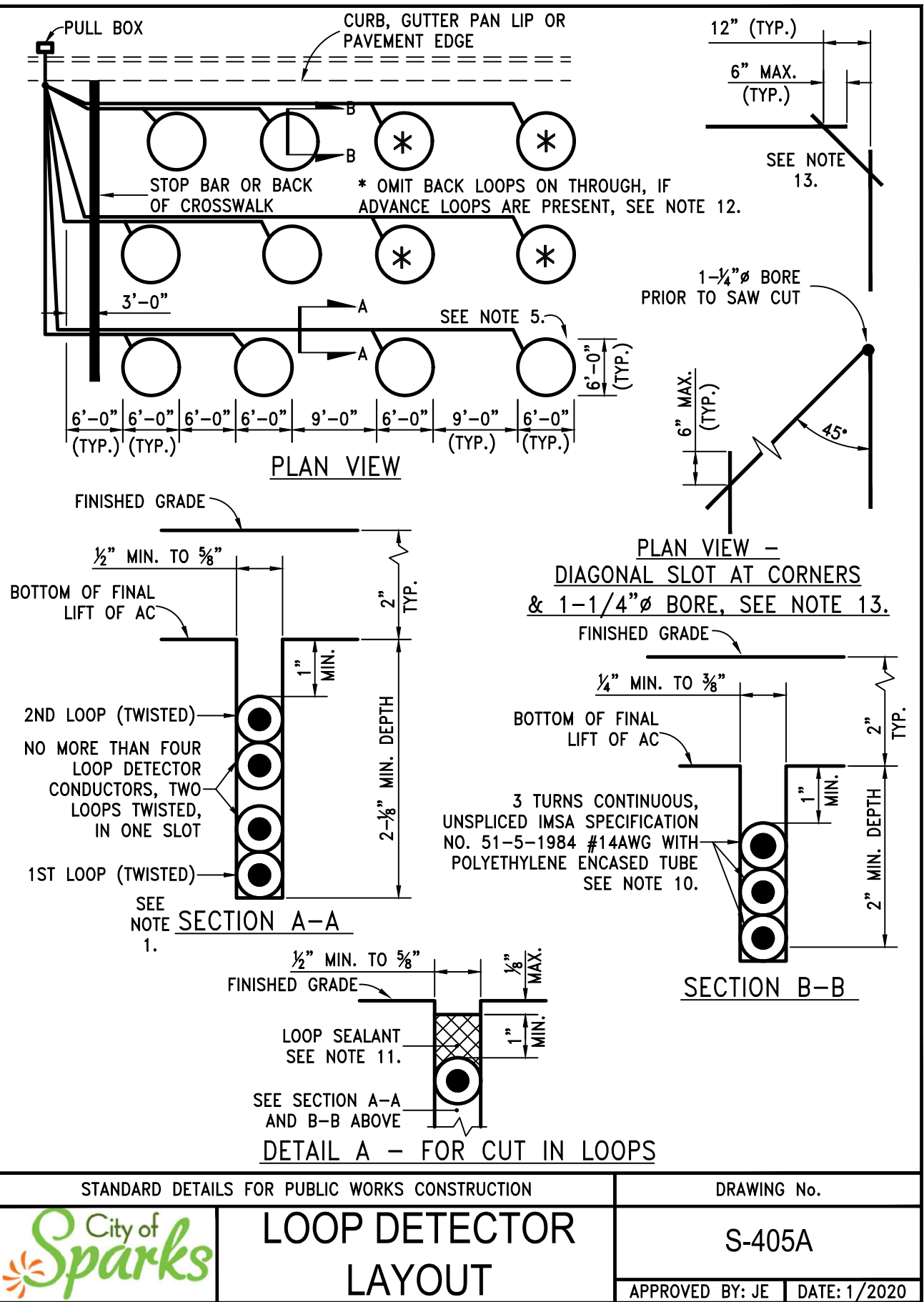
C1 MANHOLE COLLAR (S-210A)
SCALE:NTS



D1 MANHOLE TYPE IV (S-206C & S-206D MODIFIED)
SCALE:NTS



E1 LOOP DETECTOR LAYOUT & NOTES - LOOP DETECTOR LAYOUT (S-405A & S-405B)
SCALE:NTS



JUB

J-U-B ENGINEERS, INC.

J-U-B ENGINEERS, INC.

5190 Neil Road

Suite 500

Reno, NV 89502

Phone: 775.852.1440

www.jub.com

ENGINEER

JOHNSON

Exp: 8-30-25

CIVIL

No. 19440

2/18/2025

REUSE OF DRAWINGS

JUB SHALL RETAIN ALL COMMON LAW, STATUTORY, COPYRIGHT AND OTHER RIGHTS IN THIS DRAWING. NO PART OF THIS DRAWING SHALL BE REPRODUCED OR TRANSMITTED IN ANY FORM OR BY ANY MEANS, ELECTRONIC OR MECHANICAL, WITHOUT THE WRITTEN CONSENT OF JUB. ANY REUSE WITHOUT WRITTEN CONSENT BY JUB WILL BE AT CLIENT'S SOLE RISK AND WITHOUT LIABILITY OR LEGAL EXPOSURE TO JUB.

REVISION

NO.

DESCRIPTION

DATE

PRATER SEWER CAPACITY IMPROVEMENTS

CITY OF SPARKS

CITY OF SPARKS DETAILS 1

FILE: 48-23-033 C-501_DETAILS

JUB PROJ: #: 48-23-033

DRAWN BY: CAS

DESIGN BY: CAS

CHECKED BY: LJU

AT FULL SIZE, IF NOT ONE INCH SCALE ACCORDINGLY

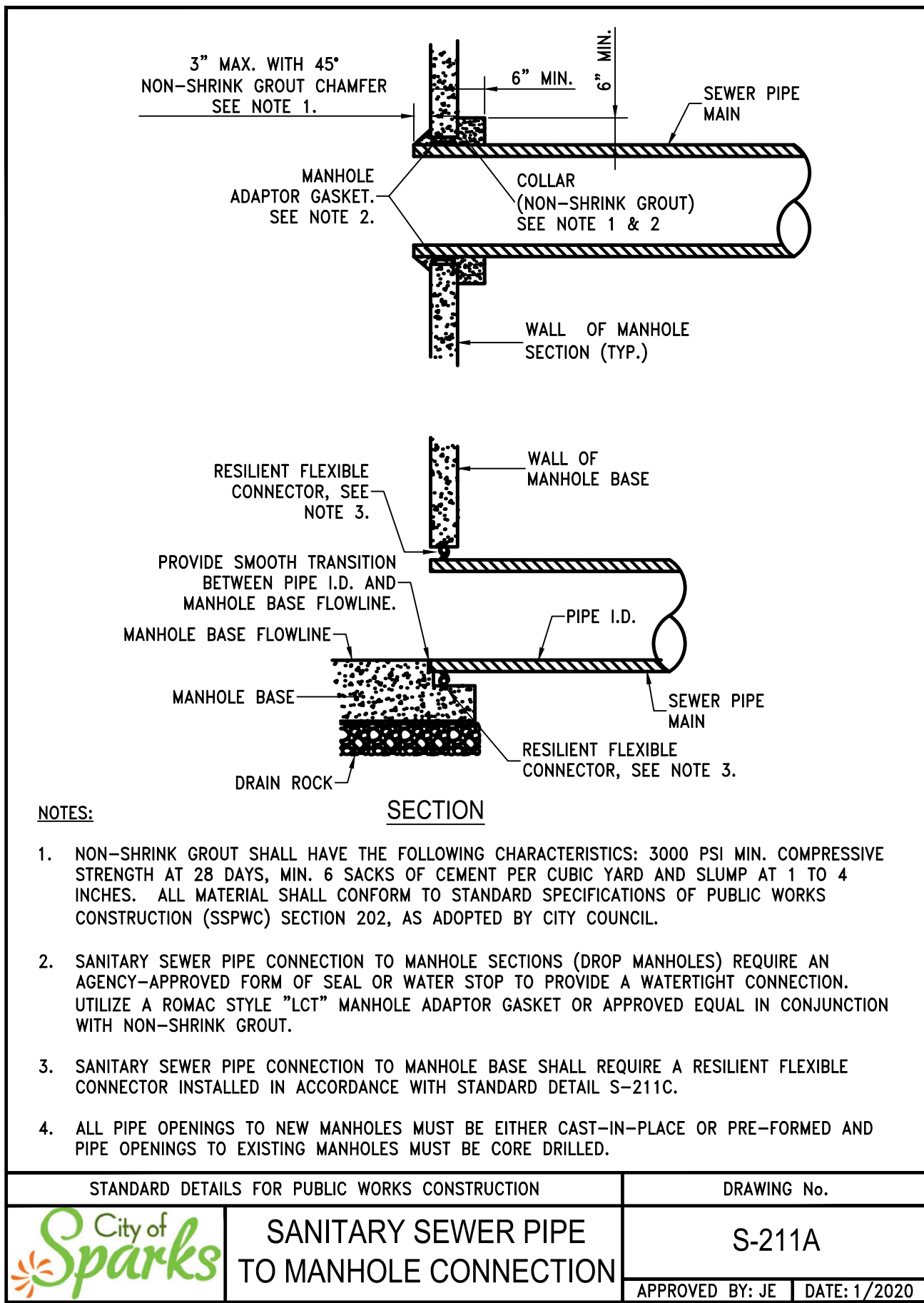
LAST UPDATED: 2/18/2025

DRAWING: C-501

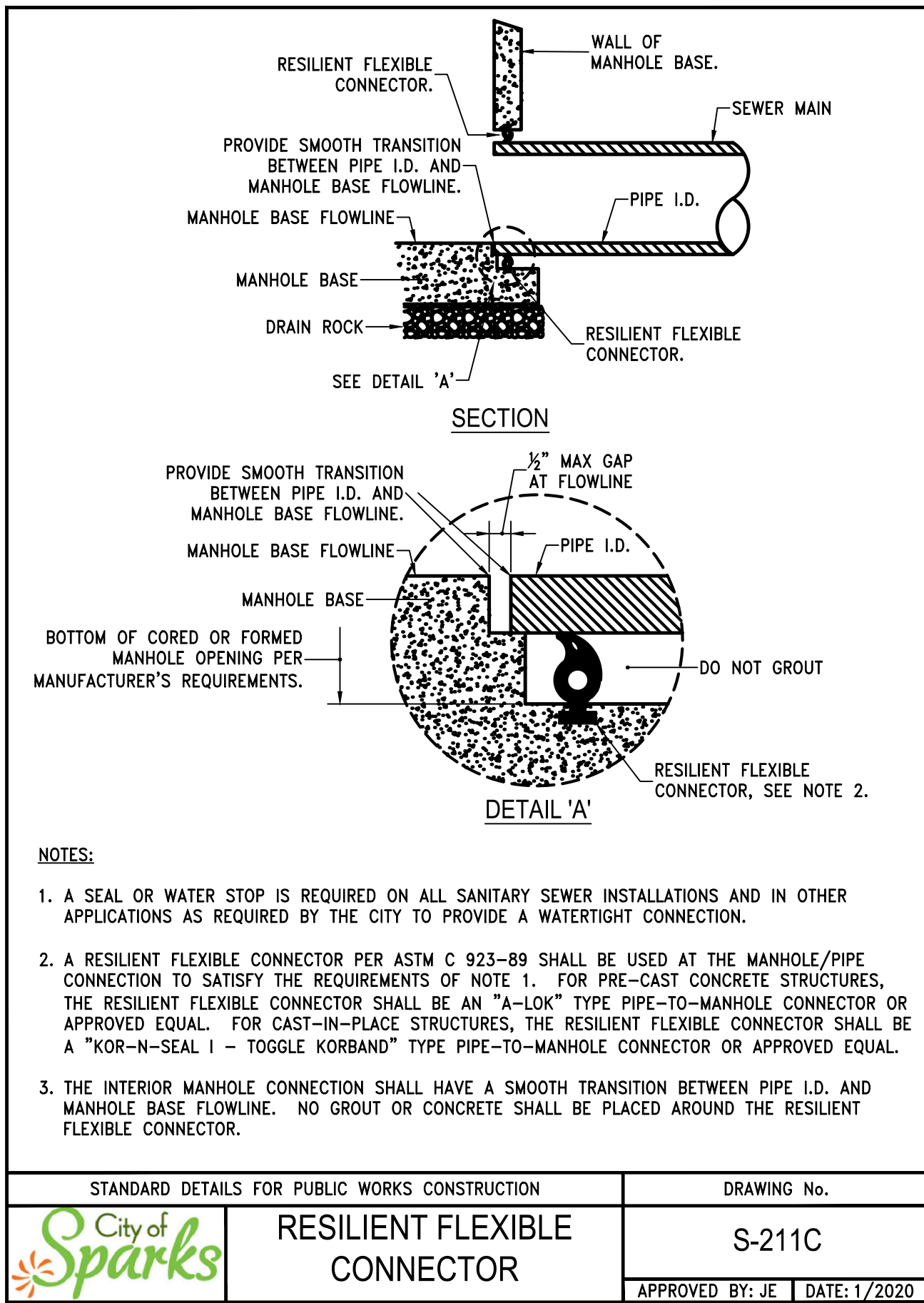
SHEET: 7 OF 10

Plot Date: 2/18/2025 2:56 PM Plotted By: Darryl Mangano Date Created: 2/2/2024 JUB.COM\CENTRAL\CLIENT\SNV\SPARKS\CITY\PROJECTS\48-23-033 PRATERSEWCAPACITYDESIGN\CA\DWG\DETAILS.DWG C-501_DETAILS.DWG

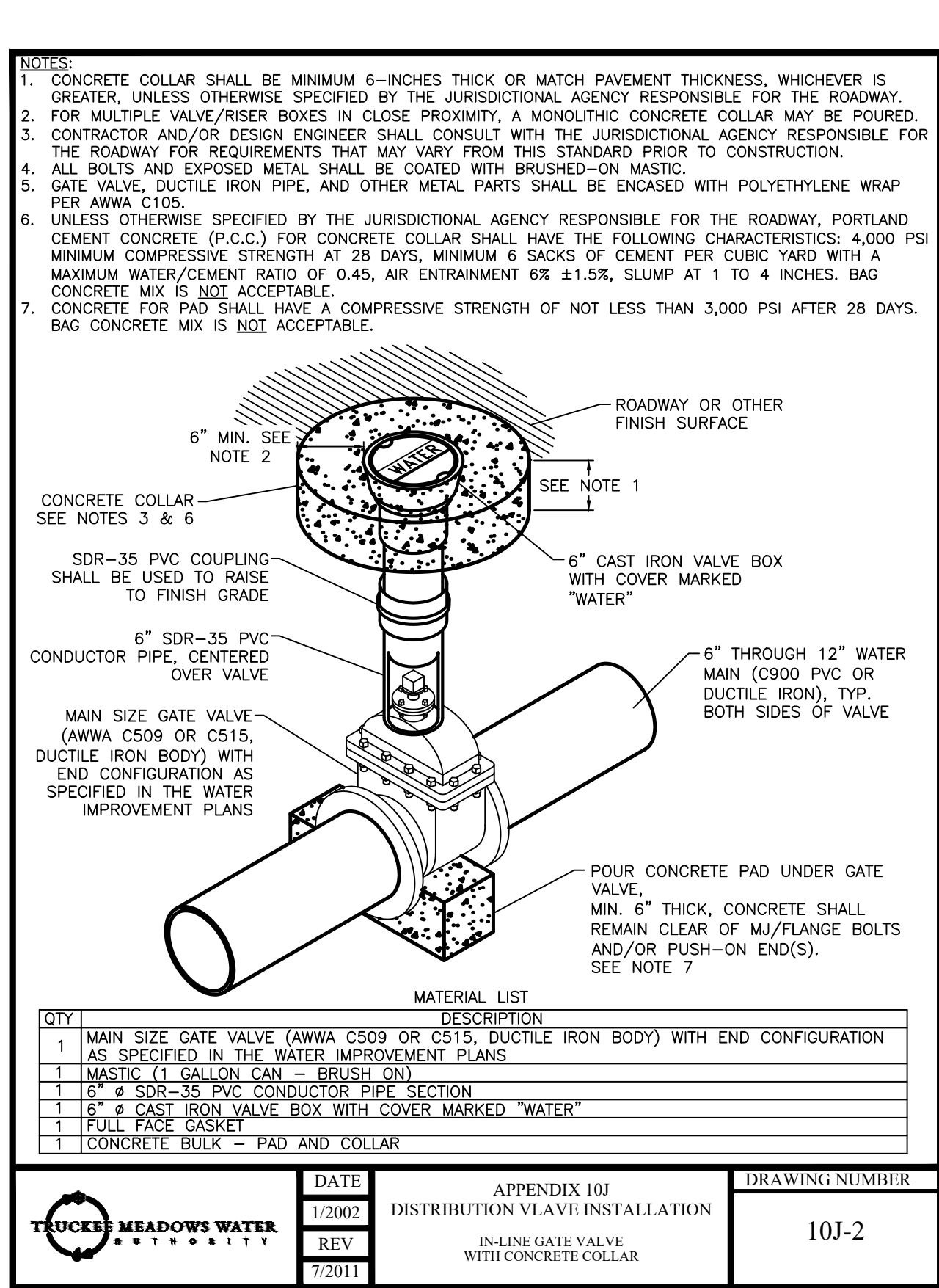
Plot Date: 2/19/2025 2:56 PM, Printed By: Danny Mangano, Date Created: 2/2/2024, JUB-001-CENTRAL CLIENT S/NV-SPARKS CITY PROJECTS-49-23-033, PRATERSSCAPACITYDESIGN/DETAILSHEET-49-23-033, C-501-DETAILS.DWG



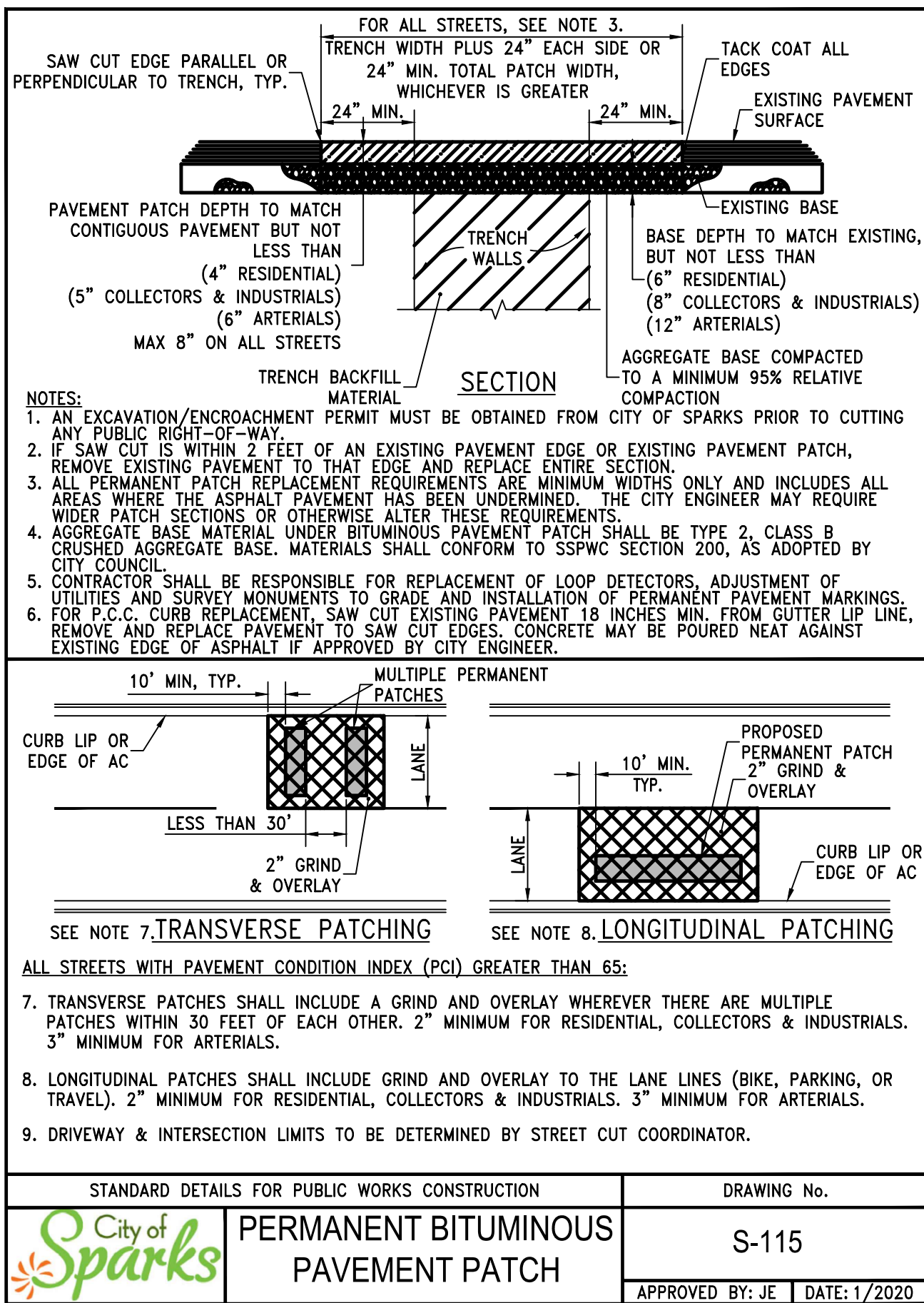
A1 SANITARY SEWER PIPE TO MANHOLE CONNECTION (S-211A)
SCALE: NTS



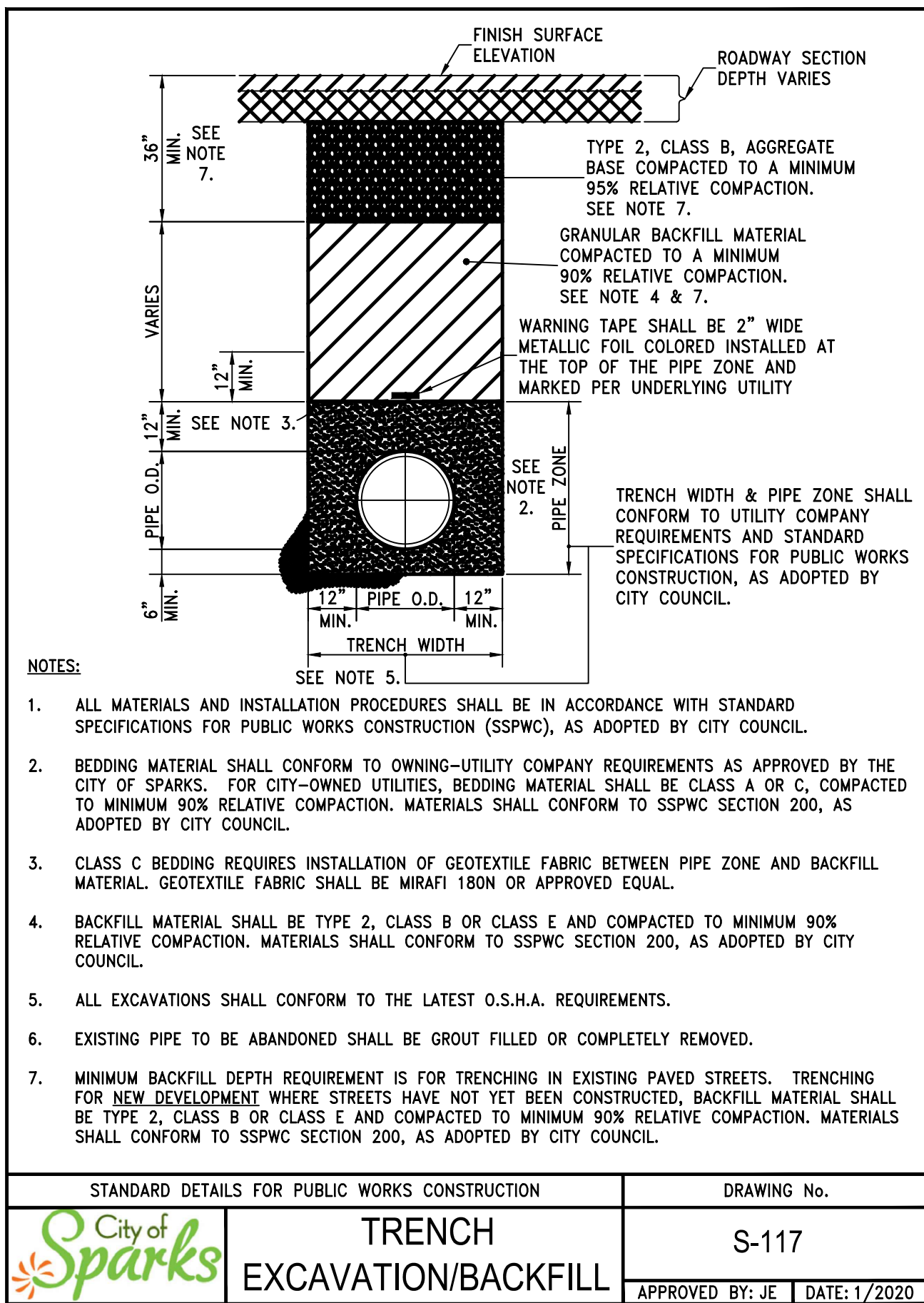
B1 RESILIENT FLEXIBLE CONNECTOR (S-211C)
SCALE: NTS



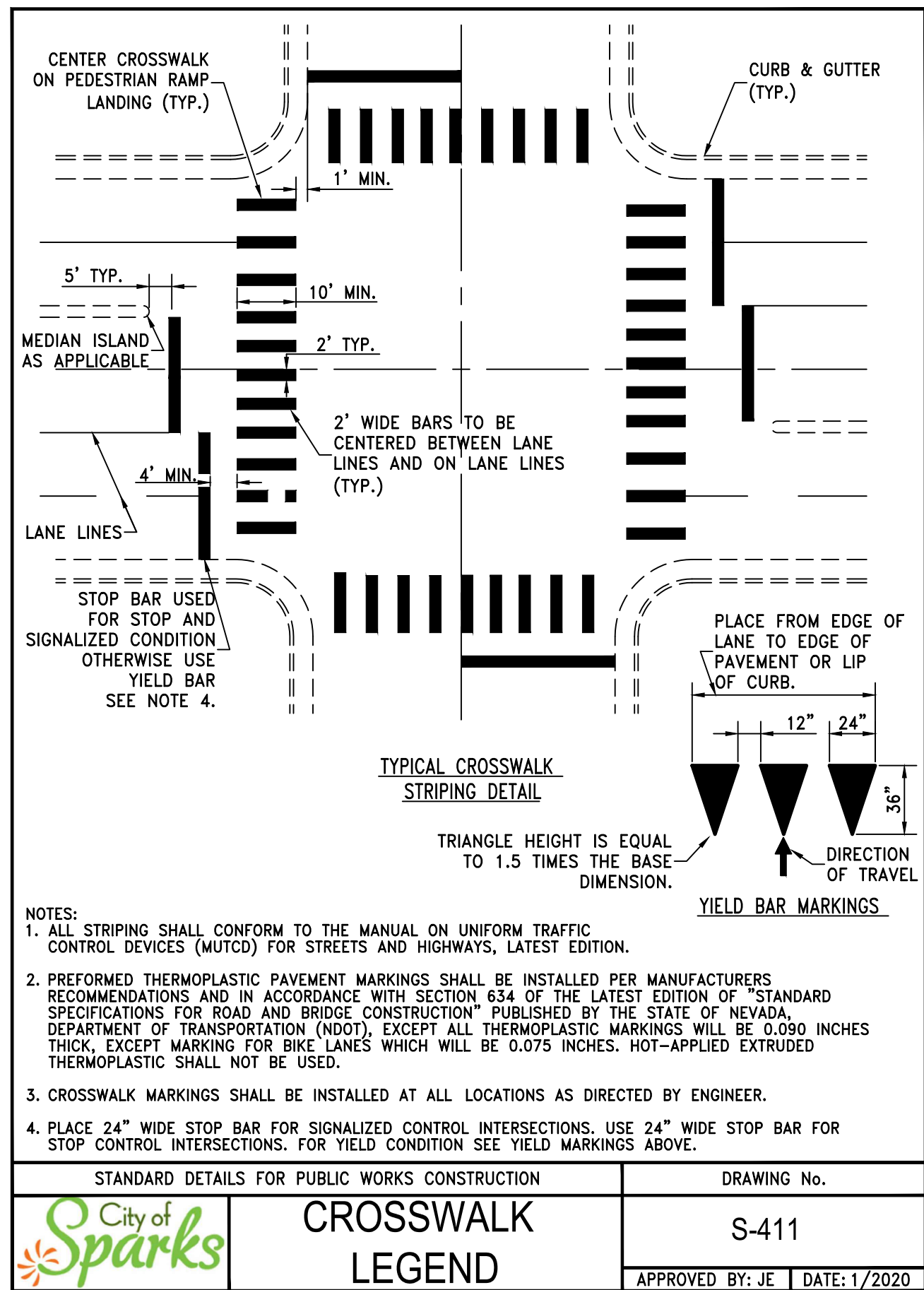
C1 IN-LINE GATE VALVE WITH CONCRETE COLLAR (10J-2)
SCALE: NTS



D1 PERMANENT BITUMINOUS PAVEMENT PATCH (S-115)
SCALE: NTS



E1 TRENCH EXCAVATION/BACKFILL (S-117)
SCALE: NTS

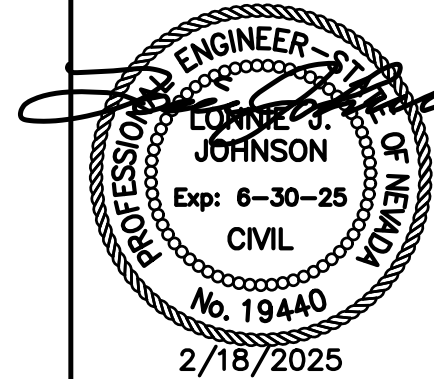


F1 CROSSWALK LEGEND (S-411)
SCALE: NTS



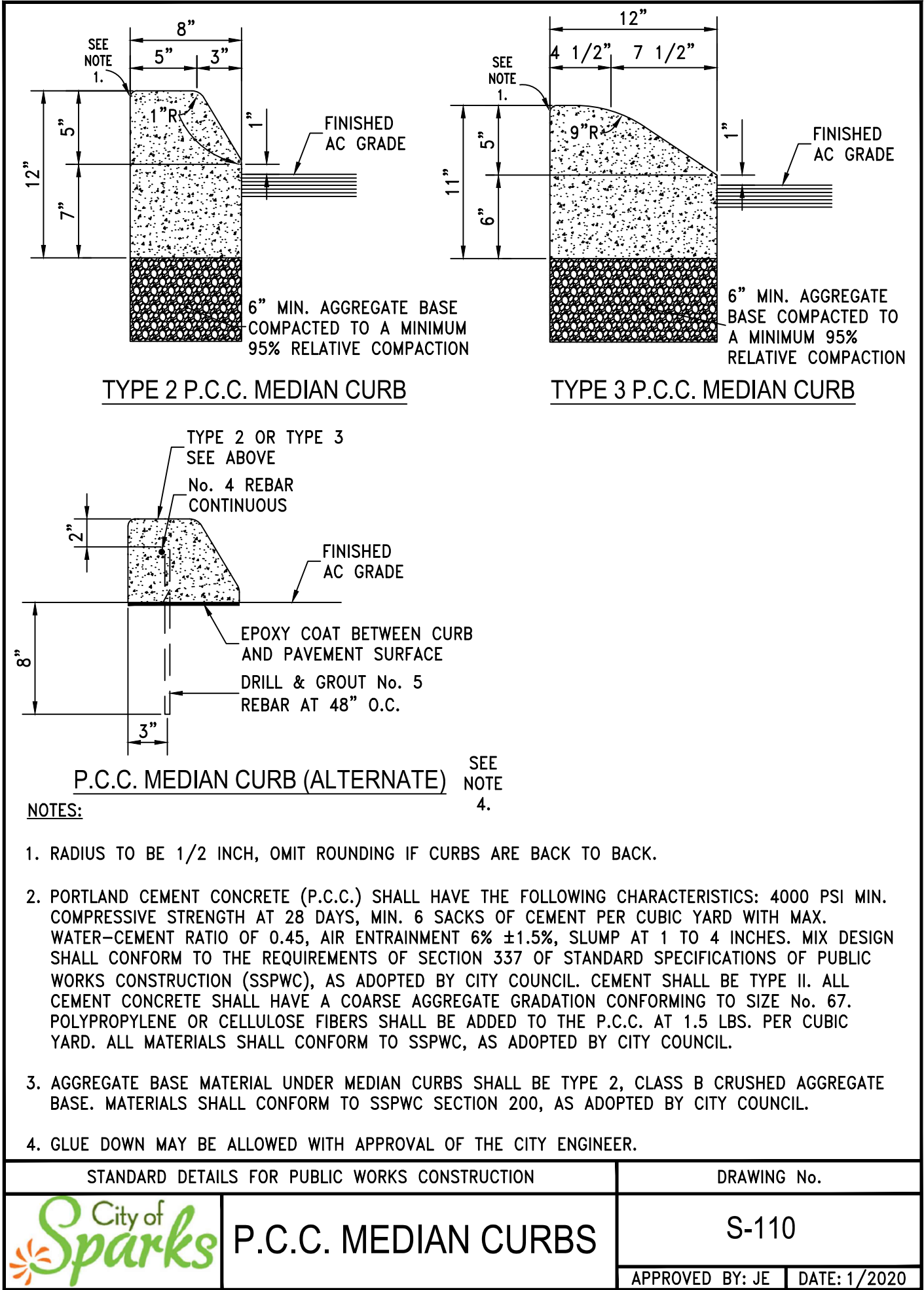
J-U-B ENGINEERS, INC.

J-U-B ENGINEERS, INC.
5190 Neil Road
Suite 500
Reno, NV 89502
Phone: 775.852.1440
www.jub.com

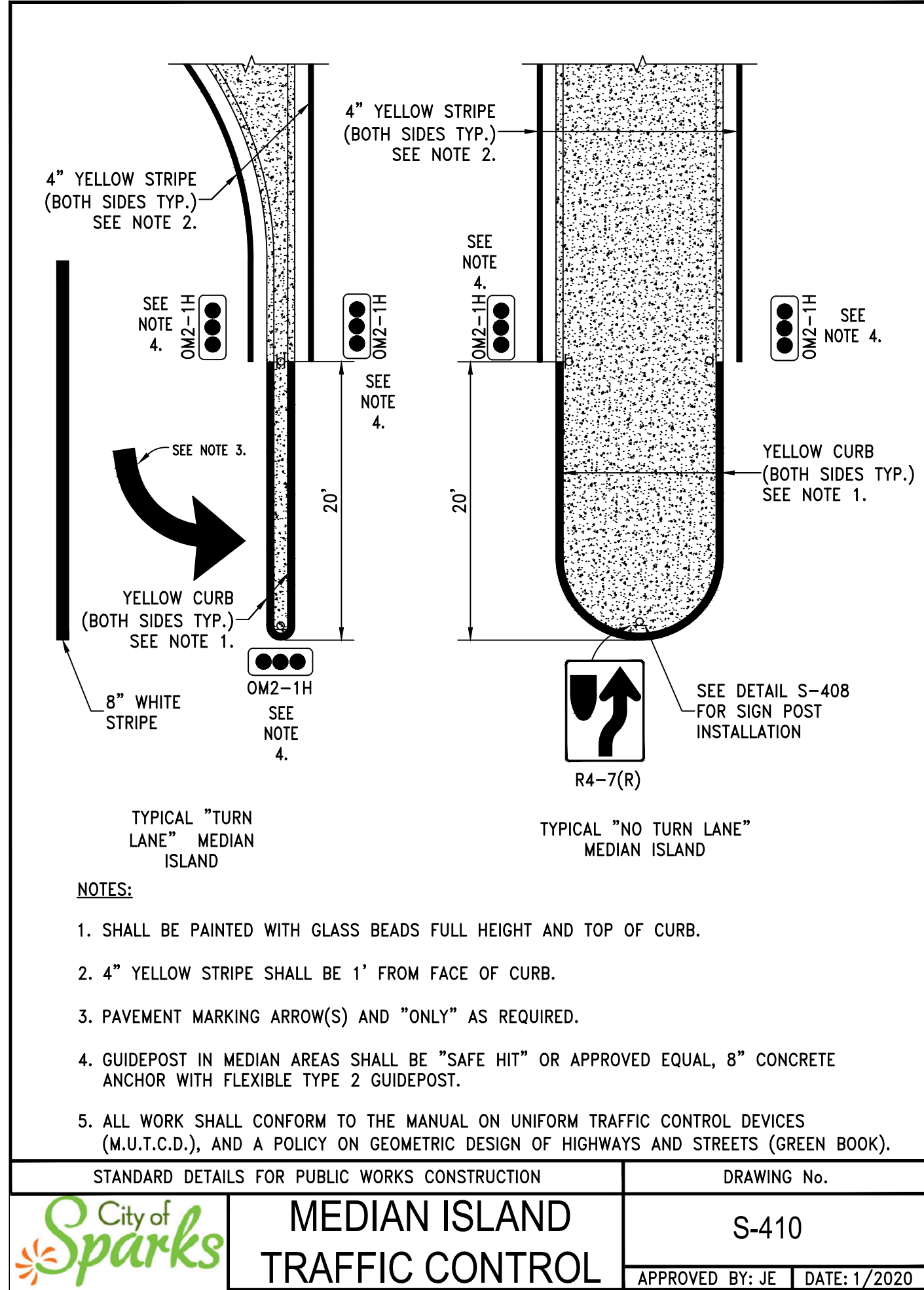


REUSE OF DRAWINGS		REVISION	
JUB SHALL RETAIN ALL COMMON LAW, STATUTORY, COPYRIGHT AND OTHER RESERVED RIGHTS OF THESE DRAWINGS, AND THE SAME SHALL NOT BE REUSED WITHOUT JUB'S PRIOR WRITTEN CONSENT. ANY REUSE WITHOUT WRITTEN CONSENT BY JUB'S CLIENT SHALL BE AT CLIENT'S SOLE RISK AND WITHOUT LIABILITY OR LEGAL EXPOSURE TO JUB.			

Plot Date: 2/18/2025 2:56 PM Plotted By: Danny Manguso
Date Created: 2/2/2024 JUB.COM\CENTRAL\CLIENT\SNV\SPARKS\CITY\PROJECTS\49-23-033 PRATER\SPARKS\CITY\DESIGN\CAD\SHEET\49-23-033 C-501 DETAILS.DWG



A1 P.C.C. MEDIAN CURBS
SCALE:NTS

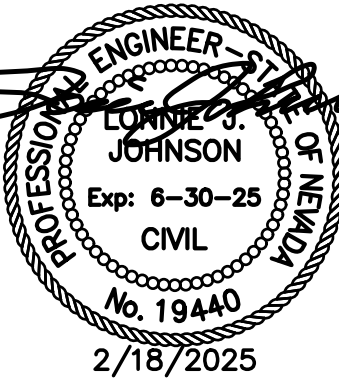


B1 MEDIAN ISLAND TRAFFIC CONTROL
SCALE:NTS



J-U-B ENGINEERS, INC.

J-U-B ENGINEERS, INC.
5190 Neil Road
Suite 500
Reno, NV 89502
Phone: 775.852.1440
www.jub.com



REUSE OF DRAWINGS JUB SHALL RETAIN ALL COMMON LAW, STATUTORY, COPYRIGHT AND OTHER RIGHTS IN ANY DESIGN OR DRAWING. NO PART OF ANY DESIGN OR DRAWING SHALL BE REPRODUCED OR TRANSMITTED IN ANY FORM OR BY ANY MEANS, ELECTRONIC OR MECHANICAL, INCLUDING PHOTOCOPYING, RECORDING, OR BY ANY INFORMATION STORAGE AND RETRIEVAL SYSTEM, WITHOUT THE WRITTEN CONSENT OF JUB. ANY REUSE WITHOUT WRITTEN CONSENT BY JUB WILL BE AT CLIENT'S SOLE RISK AND WITHOUT LIABILITY OR LEGAL EXPOSURE TO JUB.	REVISION		BY		DATE	
	NO.	DESCRIPTION	NO.	DESCRIPTION	NO.	DESCRIPTION

PRATER SEWER CAPACITY IMPROVEMENTS
CITY OF SPARKS

CITY OF SPARKS DETAILS 3

