

CIVIL IMPROVEMENT PLANS VICTORIAN AVE. INFRASTRUCTURE IMPROVEMENTS SECTION 2C SPARKS, NEVADA

LIST OF ABBREVIATIONS

A.C.	ASPHALTIC CONCRETE	L.F.	LINEAL FEET
B.C.	BEGIN CURVE	M.H.	MANHOLE
B.V.C.	BEGIN VERTICAL CURVE	P.	PAD ELEVATION
B.S.	BACK OF SIDEWALK	P.I.	POINT OF INTERSECTION
C.B.	CATCH BASIN	P.R.C.	POINT OF REVERSE CURVATURE
CL	CENTERLINE	P.O.T.	POINT OF TANGENT
CH	CHORD	P.V.C.	POLYVINYL CHLORIDE PIPE
C.M.P.	CORRUGATED METAL PIPE	R	PROPERTY LINE
CONC.	CONCRETE	(R)	RADIUS
CONST.	CONSTRUCT	R	RADIUS
C.P.	CONCRETE PIPE	REF.	REFERENCE
D.I.	DROP INLET	RET.	RETURN
DET.	DETAILS	R.C.P.	REINFORCED CONCRETE PIPE
ELEV.	ELEVATION	RT.	RIGHT
E.C.	END OF CURVE	R/W	RIGHT OF WAY
E.V.C.	END VERTICAL CURVE	S.S.	SANITARY SEWER
EXIST.	EXISTING	S.W.	SIDEWALK
E.G.	EXISTING GRADE	SHT.	SHEET
F.F.	FINISH FLOOR	STA.	STATION
F.F.C.	FRONT FACE CURB	S.D.	STORM DRAIN
F.G.	FINISH GRADE	T	TANGENT
F.H.	FIRE HYDRANT	T.C.	TOP OF CURB
FL	FLOW LINE	T.P.	TOP OF PAVEMENT
G	GAS	TYP.	TYPICAL
G.B.	GRADE BREAK	VERT.	VERTICAL
HORIZ.	HORIZONTAL	V.C.	VERTICAL CURVE
INT.	INTERSECTION	V.P.I.	VERTICAL POINT OF INTERSECTION
I.E.	INVERT ELEVATION	W	WATER
L.T.	LEFT		
L	LENGTH		

TRUCKEE MEADOWS REGIONAL STORMWATER QUALITY NOTES:

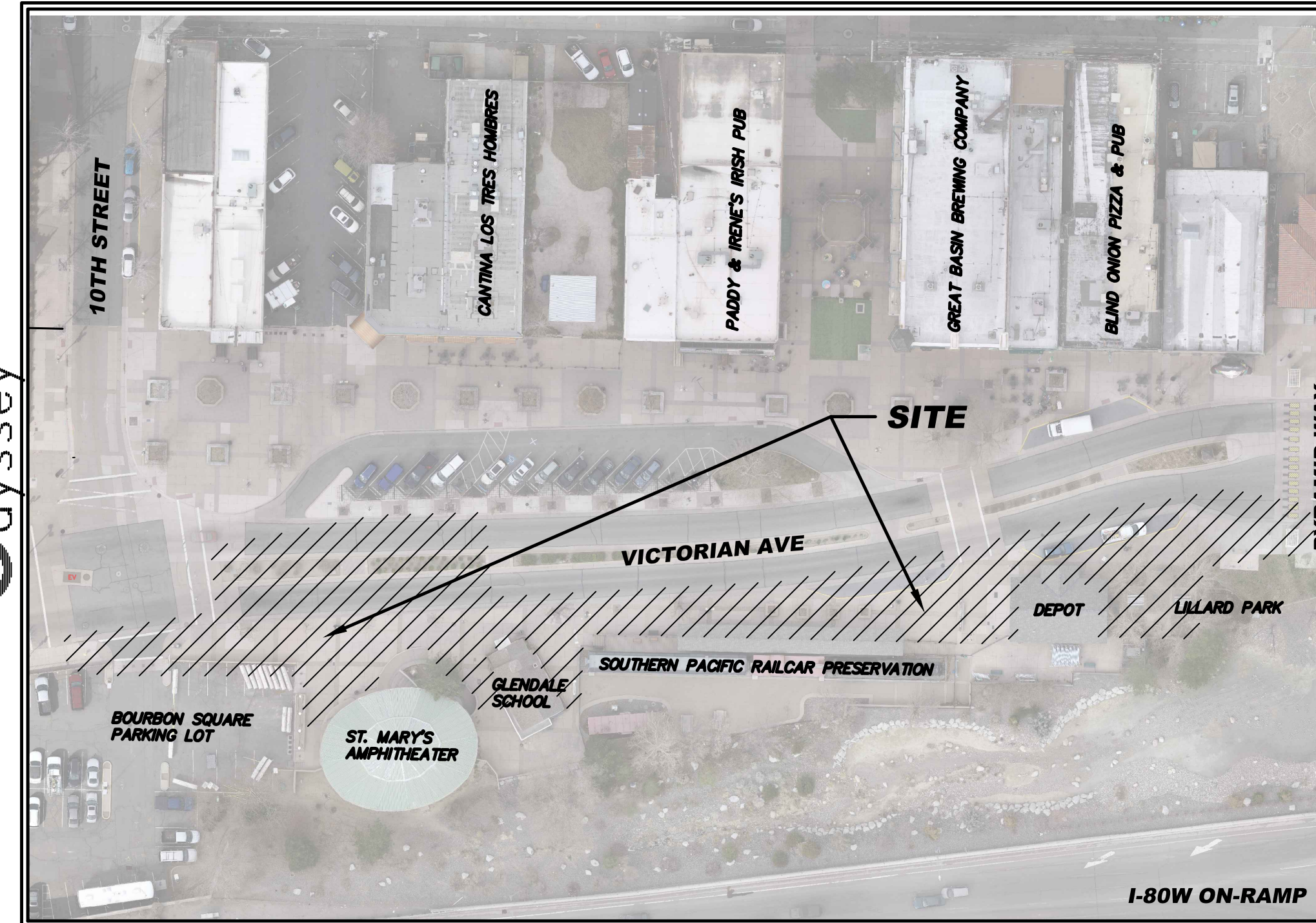
1. THE OWNER, SITE DEVELOPER, CONTRACTOR AND OR THEIR AUTHORIZED AGENTS SHALL EACH DAY REMOVE ALL SEDIMENT, MUD, CONSTRUCTION DEBRIS, OR OTHER POTENTIAL POLLUTANTS THAT MAY HAVE BEEN DISCHARGED TO, OR ACCUMULATE IN, THE PUBLIC RIGHTS OF WAYS OF THE CITY OF SPARKS AS A RESULT OF CONSTRUCTION ACTIVITIES ASSOCIATED WITH THIS SITE DEVELOPMENT OR CONSTRUCTION PROJECT. SUCH MATERIALS SHALL BE PREVENTED FROM ENTERING THE STORM SEWER SYSTEM.
2. ADDITIONAL CONSTRUCTION SITE DISCHARGE BEST MANAGEMENT PRACTICES MAY BE REQUIRED OF THE OWNER AND HIS OR HER AGENTS DUE TO UNFORESEEN EROSION PROBLEMS OR IF THE SUBMITTED PLAN DOES NOT MEET THE PERFORMANCE STANDARDS SPECIFIED IN THE CITY OF SPARKS AND THE TRUCKEE MEADOWS CONSTRUCTION SITE BEST MANAGEMENT PRACTICES HANDBOOK.
3. TEMPORARY OR PERMANENT STABILIZATION PRACTICES WILL BE INSTALLED ON DISTURBED AREAS NO LATER THAN 14 DAYS AFTER THE CONSTRUCTION ACTIVITY IN THAT PORTION OF THE SITE HAS TEMPORARILY OR PERMANENTLY CEASED. SOME EXCEPTIONS MAY APPLY; REFER TO STORMWATER GENERAL PERMIT NVR100000, SECTION 1.B.a.b. (2).
4. AT A MINIMUM, THE CONTRACTOR OR HIS AGENT SHALL INSPECT ALL DISTURBED AREAS, AREAS USED FOR STORAGE OF MATERIALS AND EQUIPMENT THAT ARE EXPOSED TO PRECIPITATION, VEHICLE ENTRANCE AND EXIT LOCATIONS AND ALL BMPs WEEKLY, PRIOR TO A FORECASTED RAIN EVENT AND WITHIN 24 HOURS AFTER ANY ACTUAL RAIN EVENT. THE CONTRACTOR OR HIS AGENT SHALL UPDATE OR MODIFY THE STORMWATER POLLUTION PREVENTION PLAN AS NECESSARY. SOME EXCEPTIONS TO WEEKLY INSPECTIONS MAY APPLY, SUCH AS FROZEN GROUND CONDITIONS OR SUSPENSION OF LAND DISTURBANCE ACTIVITIES. REFER TO STORMWATER GENERAL PERMIT NVR100000, SECTION 1.B.a.g.
5. ACCUMULATED SEDIMENT IN BMPs SHALL BE REMOVED WITHIN SEVEN DAYS AFTER A STORMWATER RUNOFF EVENT OR PRIOR TO THE NEXT ANTICIPATED STORM EVENT WHICHEVER IS EARLIER. SEDIMENT MUST BE REMOVED WHEN BMP DESIGN CAPACITY HAS BEEN REDUCED BY 50 PERCENT OR MORE.

SITE NOTES:

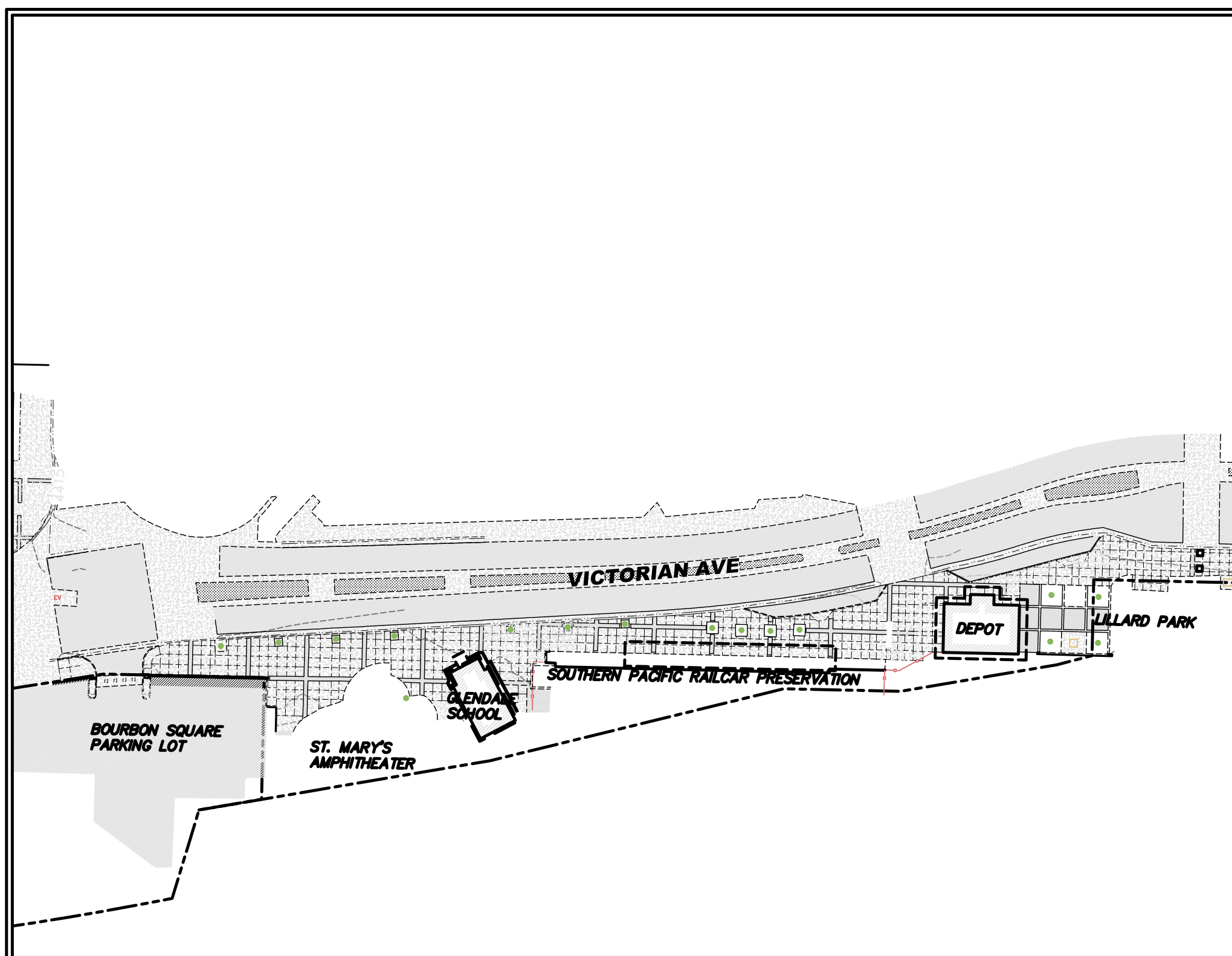
1. THE CONTRACTOR SHALL VERIFY IN FIELD, ALL ELEVATIONS, DIMENSIONS, FLOW LINES, EXISTING CONDITIONS, AND POINT OF CONNECTION WITH ADJOINING PROPERTY (PUBLIC OR PRIVATE). ANY DISCREPANCIES SHALL BE CALLED TO THE ATTENTION OF THE ENGINEER PRIOR TO PROCEEDING WITH CONSTRUCTION. THE CONTRACTOR IS RESPONSIBLE FOR ANY AND ALL DAMAGE TO EXISTING UTILITIES DURING CONSTRUCTION. IT SHALL BE THE CONTRACTORS RESPONSIBILITY TO CONTACT THE UTILITY COMPANIES FOR LOCATIONS OR POT-HOLING PRIOR TO CONSTRUCTION.
2. THE CONTRACTOR SHALL BE RESPONSIBLE FOR ANY AND ALL DAMAGE TO EXISTING UTILITIES ENCOUNTERED DURING CONSTRUCTION. IT SHALL BE THE CONTRACTORS RESPONSIBILITY TO CONTACT THE UTILITY COMPANIES FOR LOCATIONS OR POT-HOLING PRIOR TO CONSTRUCTION.
3. ALL REQUIRED UTILITY SHUT-DOWNS SHALL BE COORDINATED WITH APPROPRIATE UTILITY COMPANY.
4. THE CONTRACTOR SHALL BE RESPONSIBLE TO PROVIDE, PERMIT AND IMPLEMENT A STORM WATER POLLUTION PREVENTION PLAN IN CONFORMANCE WITH FEDERAL, STATE AND LOCAL REQUIREMENTS. THE CONTRACTOR SHALL MAINTAIN EXISTING B.M.P. IMPROVEMENTS THAT ARE IN PLACE, AND SHALL PROVIDE AND MAINTAIN ADDITIONAL B.M.P.'S AS REQUIRED TO IMPLEMENT THEIR S.W.P.P.P.
5. THE CONTRACTOR SHALL OBTAIN AND THE OWNER SHALL PAY FOR ALL NECESSARY PERMITS AND FEES REQUIRED FOR CONSTRUCTION.
6. THE CONTRACTOR SHALL NOTIFY THE PROJECT ENGINEER, NV ENERGY, CITY OF SPARKS, AND THE TRUCKEE MEADOWS WATER AUTHORITY 48 HOURS PRIOR TO COMMENCEMENT OF WORK.
7. ALL DIMENSIONS ARE TO FRONT FACE OF CURB UNLESS NOTED OTHERWISE.
8. ALL STRIPING AND SIGNAGE SHALL CONFORM TO THE LATEST MANUAL ON UNIFORM TRAFFIC CONTROL DEVICES FOR STREETS AND HIGHWAYS PREPARED BY THE U.S. DEPARTMENT OF TRANSPORTATION FEDERAL HIGHWAY ADMINISTRATION.

GRADING NOTES:

1. ALL CONSTRUCTION SHALL CONFORM TO THE STANDARD SPECIFICATIONS FOR PUBLIC WORKS CONSTRUCTION 2012 EDITION AND CITY OF SPARKS STANDARD DETAILS.
2. THE CONTRACTOR SHALL MAINTAIN A DUST CONTROL PROGRAM, INCLUDING WATERING OF OPEN AREAS. THE CONTRACTOR SHALL ALSO MAINTAIN CONFORMITY WITH SECTION 040.030 OF THE WASHOE COUNTY AIR POLLUTION REGULATIONS.
3. THE CONTRACTOR SHALL VERIFY IN FIELD, ALL ELEVATIONS, DIMENSIONS, FLOW LINES, EXISTING CONDITIONS, AND POINT OF CONNECTION WITH ADJOINING PROPERTY (PUBLIC OR PRIVATE). ANY DISCREPANCIES SHALL BE CALLED TO THE ATTENTION OF THE ENGINEER PRIOR TO PROCEEDING WITH CONSTRUCTION. THE CONTRACTOR IS RESPONSIBLE FOR ANY AND ALL DAMAGE TO EXISTING UTILITIES DURING CONSTRUCTION. IT SHALL BE THE CONTRACTORS RESPONSIBILITY TO CONTACT THE UTILITY COMPANIES FOR LOCATIONS OR POT-HOLING PRIOR TO CONSTRUCTION.
4. THE CONTRACTOR SHALL DISPOSE OF ALL DEMOLITION DEBRIS PER FEDERAL, STATE AND LOCAL REGULATIONS AND ORDINANCES.
5. ALL UNDERGROUND UTILITIES SHOWN HEREON WERE TAKEN FROM SURFACE EVIDENCE AND AVAILABLE UTILITY COMPANY RECORDS. ALL UTILITIES SHOULD BE VERIFIED IN THE FIELD. ODYSSEY ENGINEERING INC. ASSUMES NO RESPONSIBILITY FOR ACCURACY OR COMPLETENESS OF SUCH RECORDS.
6. THE CONTRACTOR SHALL MAINTAIN AN ON-GOING PROCESS OF REMOVAL OF ALL SPILLAGE OF EXCAVATION MATERIAL ON ALL PAVED STREETS.
7. ALL REQUIRED UTILITY SHUT-DOWNS SHALL BE COORDINATED WITH APPROPRIATE UTILITY COMPANY AND OWNERS PERSONNEL.
8. THE CONTRACTOR SHALL BE RESPONSIBLE TO PROVIDE, PERMIT AND IMPLEMENT A STORM WATER POLLUTION PREVENTION PLAN IN CONFORMANCE WITH FEDERAL, STATE AND LOCAL REQUIREMENTS. THE CONTRACTOR SHALL MAINTAIN EXISTING B.M.P. IMPROVEMENTS THAT ARE IN PLACE, AND SHALL PROVIDE AND MAINTAIN ADDITIONAL B.M.P.'S AS REQUIRED TO IMPLEMENT HIS S.W.P.P.P.
9. THE CONTRACTOR SHALL OBTAIN AND THE OWNER SHALL PAY FOR ALL NECESSARY PERMITS AND FEES REQUIRED FOR CONSTRUCTION.
10. THE CONTRACTOR SHALL NOTIFY THE PROJECT ENGINEER, NV ENERGY, CITY OF SPARKS, AND THE TRUCKEE MEADOWS WATER AUTHORITY 48 HOURS PRIOR TO COMMENCEMENT OF WORK.
11. ADD 4400 FEET TO ALL TRUNCATED ELEVATIONS.
12. EXISTING LANDSCAPING SHALL BE PRESERVED AS MUCH AS PRACTICAL DURING SITE IMPROVEMENTS CONSTRUCTION.



VICINITY MAP



SITE LAYOUT

OWNER/DEVELOPER

CITY OF SPARKS
SPARKS, NV 89432

CIVIL ENGINEER

ODYSSEY ENGINEERING, INC.
895 ROBERTA LANE, SUITE #104
SPARKS, NV 89431
(775) 359-3303

CIVIL SHEET INDEX

- 1 TITLE SHEET
- 2 CIVIL DEMO PLAN
- 3 CIVIL SITE PLAN
- 4 CIVIL GRADING PLAN
- 5 CIVIL DETAILS

SPECIFICATIONS

ALL CONSTRUCTION SHALL CONFORM TO THE STANDARD SPECIFICATIONS FOR PUBLIC WORKS CONSTRUCTION 2012 EDITION AND CITY OF SPARKS STANDARD DETAILS.

ENGINEER'S CERTIFICATE

THESE PLANS, SHEETS 1 OF 5 THROUGH 5 OF 5, HAVE BEEN PREPARED IN ACCORDANCE WITH THE CITY OF SPARKS CODE.

TRAVIS C. PAGE

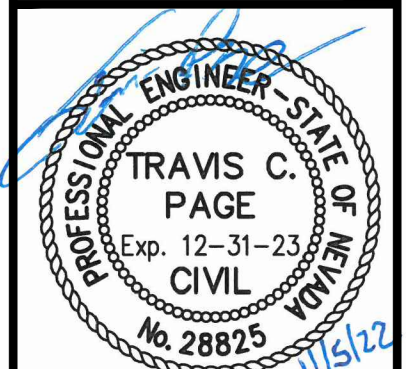
P.E. #28825

REV.	DATE	DESCRIPTION	BY	APP'D

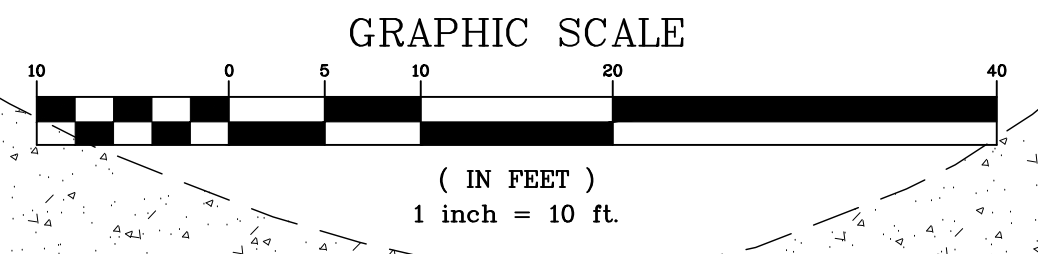
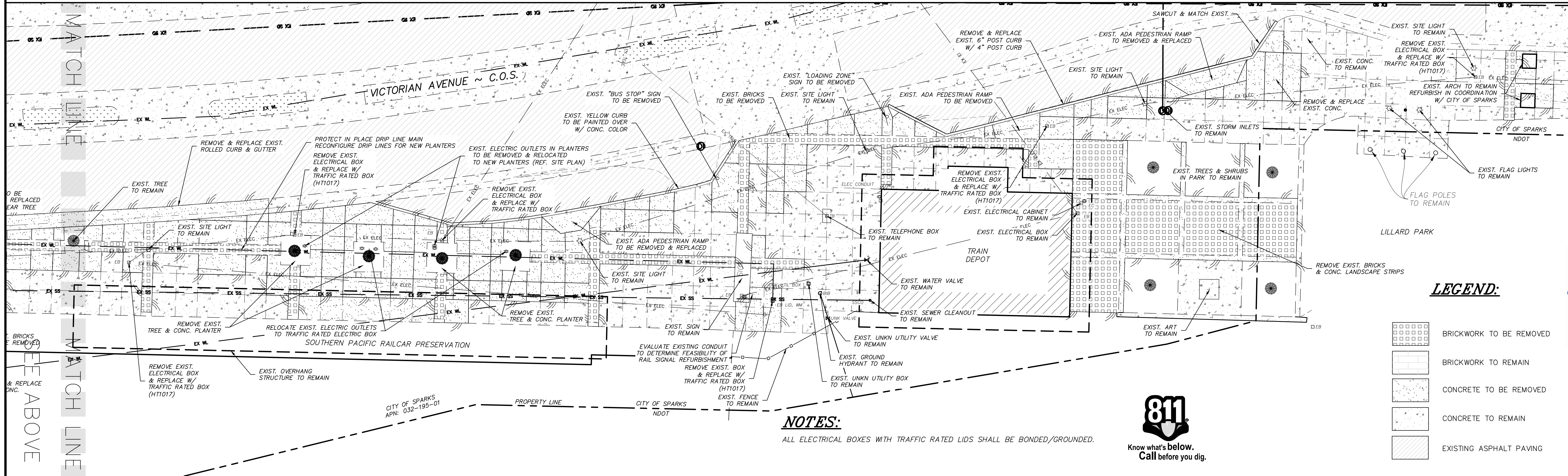
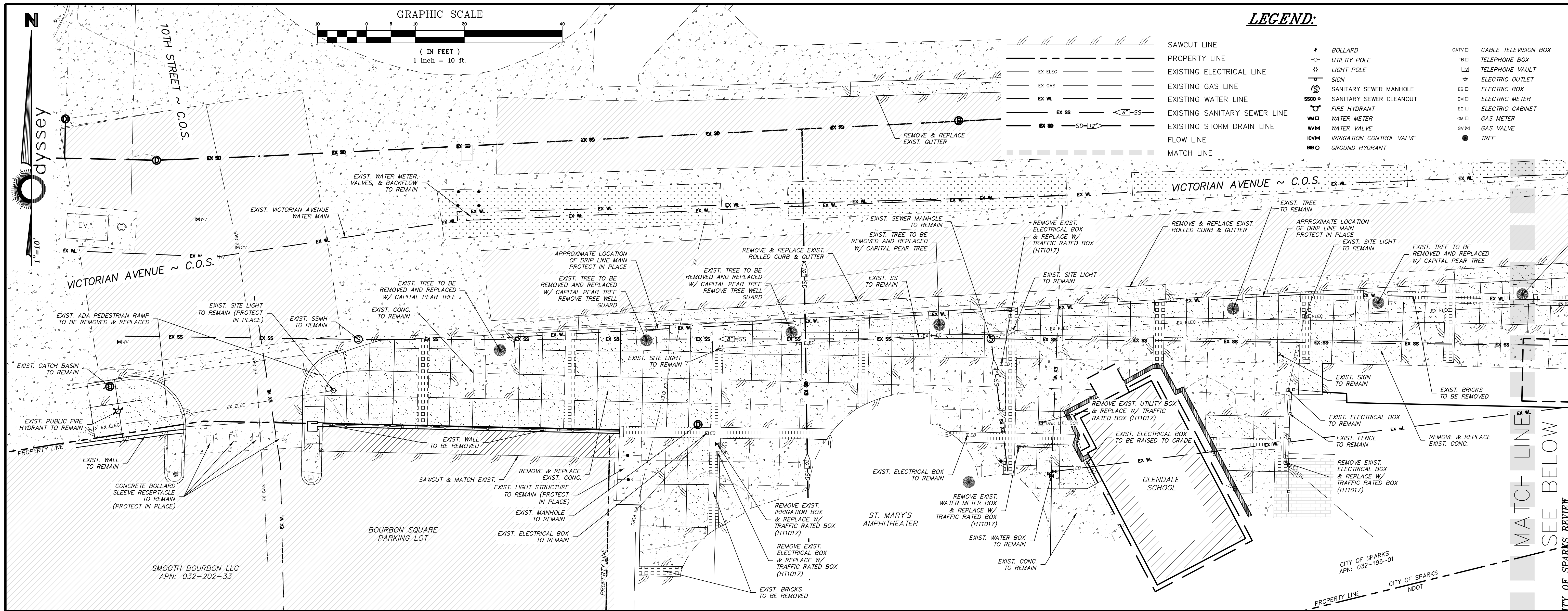
DATE: 11-9-22	DATE: 11-9-22
DRAWN BY: C3D_2022	DESIGNED BY: TJC
CHECKED BY: TJC	CHECKED BY: TJC

CITY OF SPARKS REVIEW
 VICTORIAN AVE. INFRASTRUCTURE
 IMPROVEMENTS SECTION 2C
 TITLE SHEET
 SPARKS NEVADA
 WASHOE

895 ROBERTA LANE, SUITE 104, SPARKS, NV 89431
 (775) 359-3303 FAX (775) 359-3329
 EMAIL: INFO@ODYSSEYENGINEERING.COM
 ODYSSEYENGINEERING.COM
Odyssey ENGINEERING INCORPORATED



SCALE	—
HORIZ.	—
VERT.	—
JOB NO.	4561
SHEET	1
OF	6



LEGEND:

--- SAWCUT LINE	--- PROPERTY LINE	--- EX. ELEC. EXISTING ELECTRICAL LINE	--- EX. GAS EXISTING GAS LINE	--- EX. WL EXISTING WATER LINE	--- EX. SS EXISTING SANITARY SEWER LINE	--- EX. SD EXISTING STORM DRAIN LINE	--- FLOW LINE	--- MATCH LINE	● BOLLARD	○ UTILITY POLE	○ LIGHT POLE	○ SIGN	○ SANITARY SEWER MANHOLE	○ FIRE HYDRANT	○ WATER METER	○ WATER VALVE	○ IRRIGATION CONTROL VALVE	○ GROUND HYDRANT	□ CABLE TELEVISION BOX	□ TELEPHONE BOX	□ TELEPHONE VAULT	□ ELECTRIC OUTLET	□ EB EXISTING ELECTRICAL BOX	□ EM EXISTING ELECTRIC METER	□ EC EXISTING ELECTRIC CABINET	□ GM GAS METER	□ GV GAS VALVE	● TREE
-----------------	-------------------	--	-------------------------------	--------------------------------	---	--------------------------------------	---------------	----------------	-----------	----------------	--------------	--------	--------------------------	----------------	---------------	---------------	----------------------------	------------------	------------------------	-----------------	-------------------	-------------------	------------------------------	------------------------------	--------------------------------	----------------	----------------	--------

DATE:	REV:	DATE:	DESCRIPTION:	BY:	APP'D:
11-9-22					
DRAWN BY: C3D 2022		DESIGNED BY: TCF		CHECKED BY: TCF	

VICTORIAN AVE. INFRASTRUCTURE IMPROVEMENTS SECTION 2C DEMO PLAN

SPARKS WASHOE NEVADA

NOTES:
ALL ELECTRICAL BOXES WITH TRAFFIC RATED LIDS SHALL BE BONDED/GROUNDED.



LEGEND:

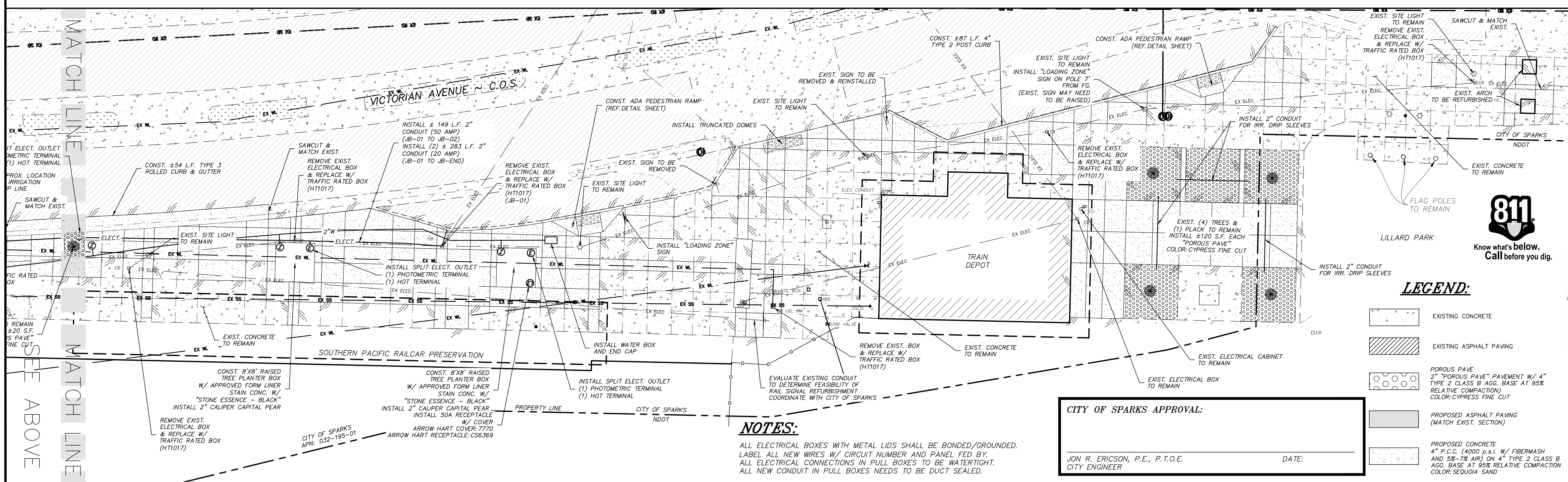
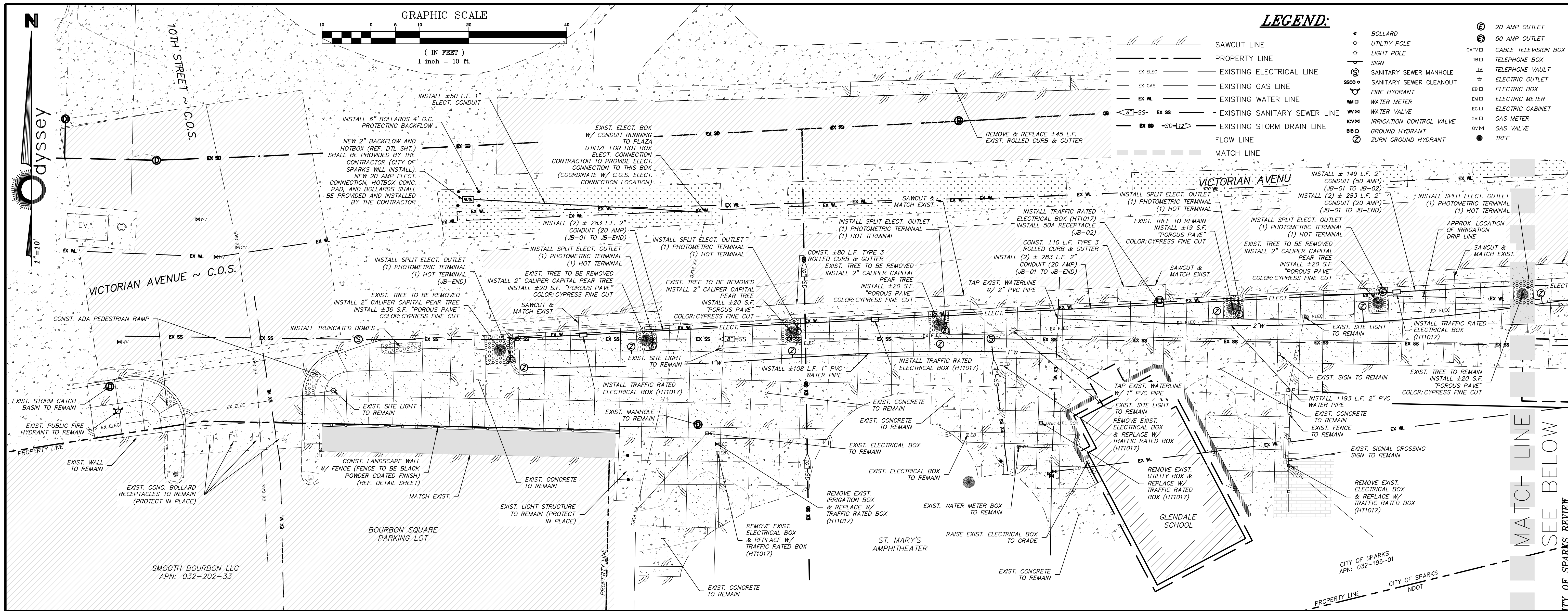
□	BRICKWORK TO BE REMOVED
□	BRICKWORK TO REMAIN
□	CONCRETE TO BE REMOVED
□	CONCRETE TO REMAIN
□	EXISTING ASPHALT PAVING

885 ROBERTA LANE, SUITE 104, SPARKS, NV 89431
(775) 369-3303 FAX (775) 359-3329
EMAIL: INFO@DYDESSENEVO.COM
WWW.DYDESSENEVO.COM

dydsey ENGINEERING INCORPORATED

PROFESSIONAL ENGINEER - STATE OF NEVADA
TRAVIS C. PAGE
Exp. 12-31-23
CIVIL
No. 28825

SCALE
HORIZ. 1"=10'
VERT. ---
JOB NO. 4561
SHEET 2 OF 6



LEGEND:

- SAWCUT LINE
- PROPERTY LINE
- EX ELEC — EXISTING ELECTRICAL LINE
- EX GAS — EXISTING GAS LINE
- EX WL — EXISTING WATER LINE
- EX SS — EXISTING SANITARY SEWER LINE
- EX SD — EXISTING STORM DRAIN LINE
- FLOW LINE
- MATCH LINE
- BOLLARD
- UTILITY POLE
- LIGHT POLE
- SN
- SANITARY SEWER MANHOLE
- SANITARY SEWER CLEANOUT
- FIRE HYDRANT
- WATER METER
- WATER VALVE
- IRRIGATION CONTROL VALVE
- GROUND HYDRANT
- ZURN GROUND HYDRANT
- 20 AMP OUTLET
- 50 AMP OUTLET
- CABLE TELEVISION BOX
- TELEPHONE BOX
- TELEPHONE VAULT
- ELECTRIC OUTLET
- ELECTRIC BOX
- ELECTRIC METER
- ELECTRIC CABINET
- GAS METER
- GAS VALVE
- TREE

LEGEND:

- EXISTING CONCRETE
- EXISTING ASPHALT PAVING
- POROUS PAVE
- 2" "POROUS PAVE" PAVEMENT W/ 4" TYPE 2 CLASS B AGG. BASE AT 95% RELATIVE COMPACTION) COLOR: CYPRESS FINE CUT
- PROPOSED ASPHALT PAVING (MATCH EXIST. SECTION)
- PROPOSED CONCRETE
- 4" P.C.C. (4000 P.S.I. W/ FIBERMESH AND 5%-7% AIR) ON 4" TYPE 2 CLASS B AGG. BASE AT 95% RELATIVE COMPACTION COLOR: SEQUOIA SAND

NOTES:

ALL ELECTRICAL BOXES WITH METAL LIDS SHALL BE BONDED/GROUNDED.
 LABEL ALL NEW WIRES W/ CIRCUIT NUMBER AND PANEL FED BY.
 ALL ELECTRICAL CONNECTIONS IN FULL BOXES TO BE WATERTIGHT.
 ALL NEW CONDUIT IN FULL BOXES NEEDS TO BE DUCT SEALED.

CITY OF SPARKS APPROVAL:

JON R. ERICSON, P.E., P.T.O.E.
 CITY ENGINEER

DATE:

DATE:	REV:	DESCRIPTION:	BY:	APP'D:
11-5-22				

VICTORIAN AVE. INFRASTRUCTURE IMPROVEMENTS SECTION 2C SITE PLAN

SPARKS NEVADA

885 ROBERTA LANE, SUITE 104, SPARKS, NV 89431
 (775) 369-3303 FAX (775) 359-3329
 EMAIL: INFO@DYSSSEYRENO.COM
 WWW.DYSSSEYRENO.COM

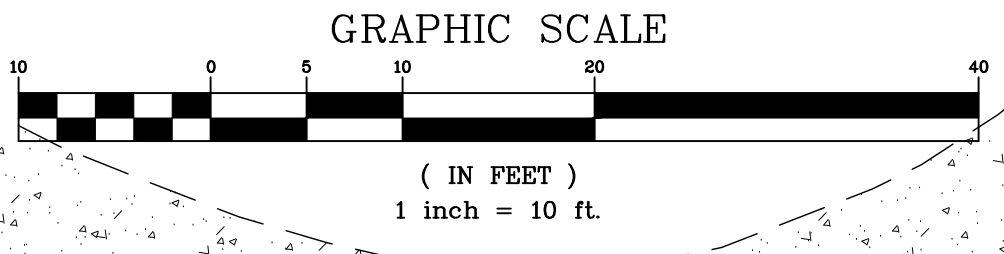
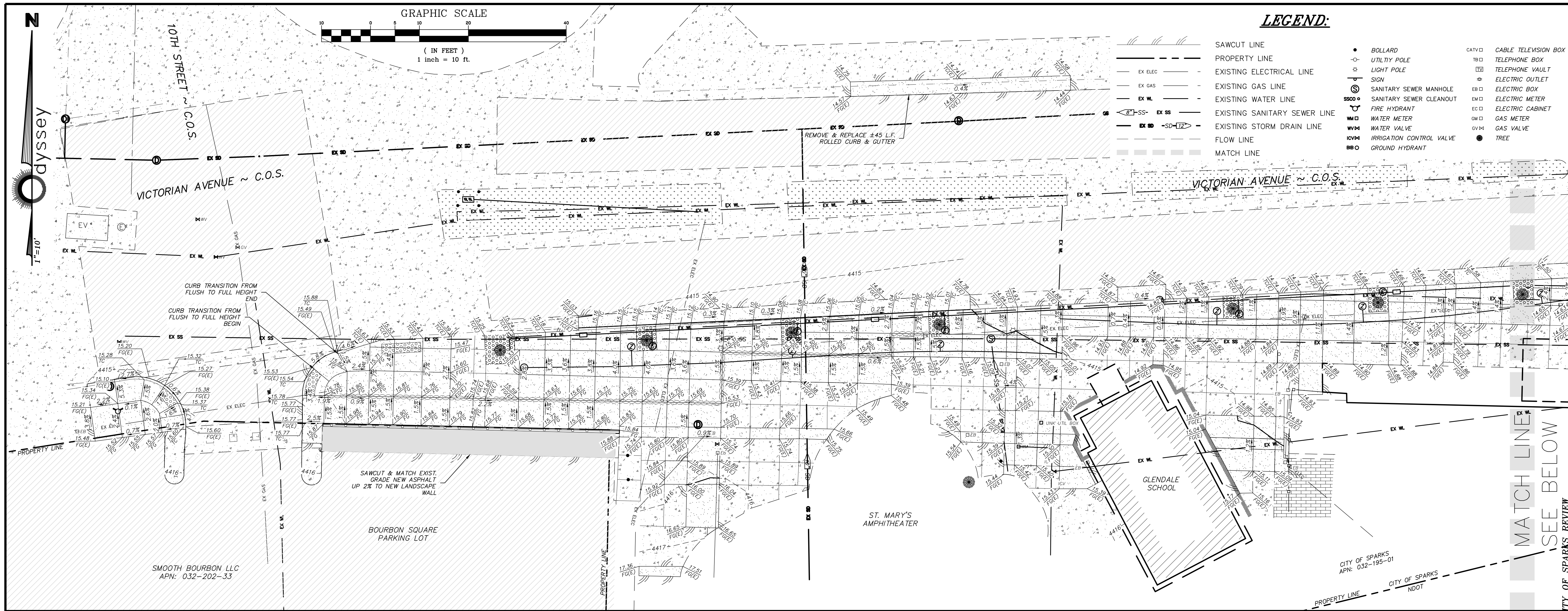
dysssey ENGINEERING INCORPORATED

811
 Know what's below.
 Call before you dig.

LEGEND:

SCALE: HORIZ. 1"=10'
 VERT. —
 JOB NO. 4561
 SHEET 3 OF 6

PROFESSIONAL ENGINEER - STATE OF NEVADA
TRAVIS C. PAGE
 Exp. 12-31-23
 CIVIL
 No. 28825



LEGEND:

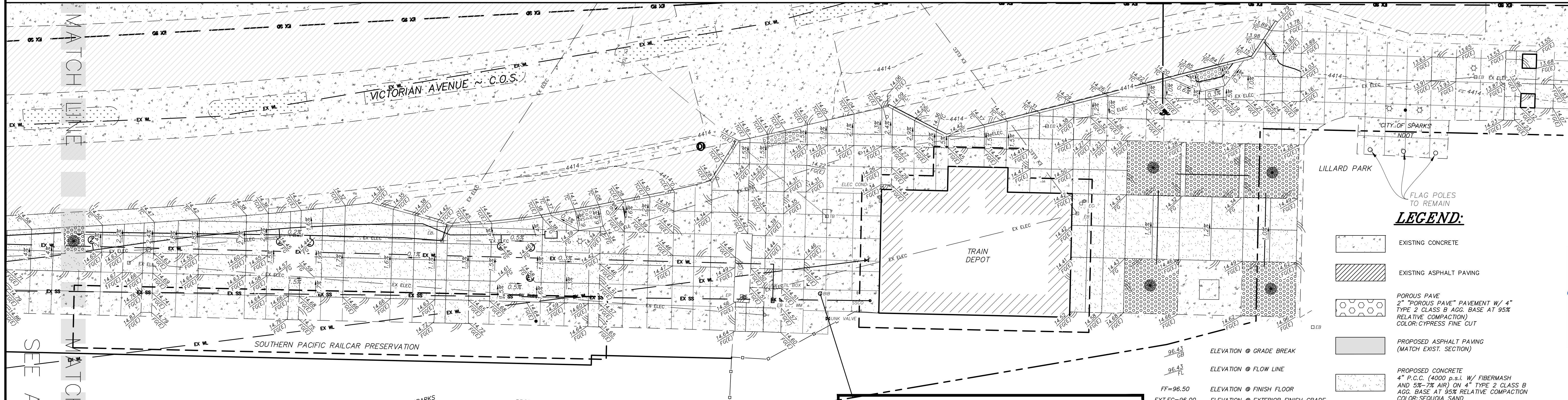
- SAWCUT LINE
- - - - - PROPERTY LINE
- EX. ELEC. --- EXISTING ELECTRICAL LINE
- EX. GAS --- EXISTING GAS LINE
- EX. W.L. --- EXISTING WATER LINE
- EX. SS --- EXISTING SANITARY SEWER LINE
- EX. SD --- EXISTING STORM DRAIN LINE
- FLOW LINE
- MATCH LINE
- BOLLARD
- UTILITY POLE
- LIGHT POLE
- SIGN
- SANITARY SEWER MANHOLE
- SANITARY SEWER CLEANOUT
- FIRE HYDRANT
- WATER METER
- WATER VALVE
- IRRIGATION CONTROL VALVE
- GROUND HYDRANT
- CABLE TELEVISION BOX
- TELEPHONE BOX
- TELEPHONE VAULT
- ELECTRIC OUTLET
- ELECTRIC BOX
- ELECTRIC METER
- ELECTRIC CABINET
- GAS METER
- GAS VALVE
- TREE

REV.	DATE	DESCRIPTION	BY	APP'D

DATE: 11-9-22
 DRAWN BY: C3D 2022
 DESIGNED BY: TGP
 CHECKED BY: TGP

VICTORIAN AVE. INFRASTRUCTURE IMPROVEMENTS SECTION 2C GRADING PLAN

SPARKS WASHOE NEVADA



LEGEND:

- EXISTING CONCRETE
- EXISTING ASPHALT PAVING
- POROUS PAVE 2" POROUS PAVE PAVEMENT W/ 4" TYPE 2 CLASS B AGG. BASE AT 95% RELATIVE COMPACTION COLOR: CYPRESS FINE CUT
- PROPOSED ASPHALT PAVING (MATCH EXIST. SECTION)
- PROPOSED CONCRETE 4" P.C.C. (4000 p.s.i. W/ FIBERMESH AND 5%-7% AIR) ON 4" TYPE 2 CLASS B AGG. BASE AT 95% RELATIVE COMPACTION COLOR: SEVOIA SAND
- GRADE BREAK
- 2.0% SLOPE IN PERCENT
- ELEVATION @ FINISH GRADE
- ELEVATION @ TOP OF CURB

- ELEVATION @ GRADE BREAK
- ELEVATION @ FLOW LINE
- FF=96.50 ELEVATION @ FINISH FLOOR
- EXT.FG=96.00 ELEVATION @ EXTERIOR FINISH GRADE
- PAD=94.00 ELEVATION @ PAD GRADE
- SAWCUT LINE
- 4.39% EXISTING CONTOUR
- 96 PROPOSED CONTOUR
- (E) EXISTING

NOTES:

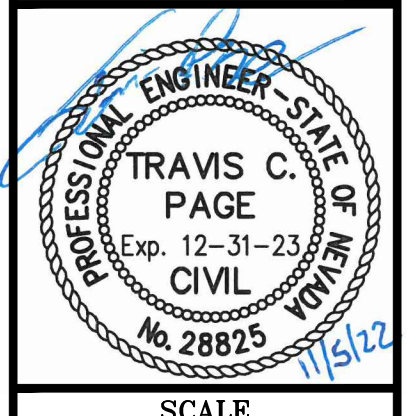
ALL ELECTRICAL BOXES WITH TRAFFIC RATED LIDS SHALL BE BONDED/GROUNDED.

CITY OF SPARKS APPROVAL:

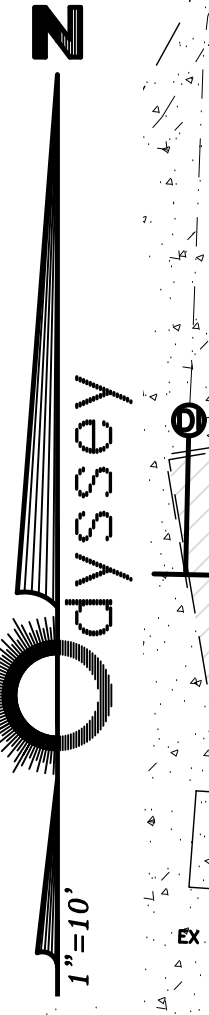
JON R. ERICSON, P.E., P.T.O.E. DATE: _____
 CITY ENGINEER

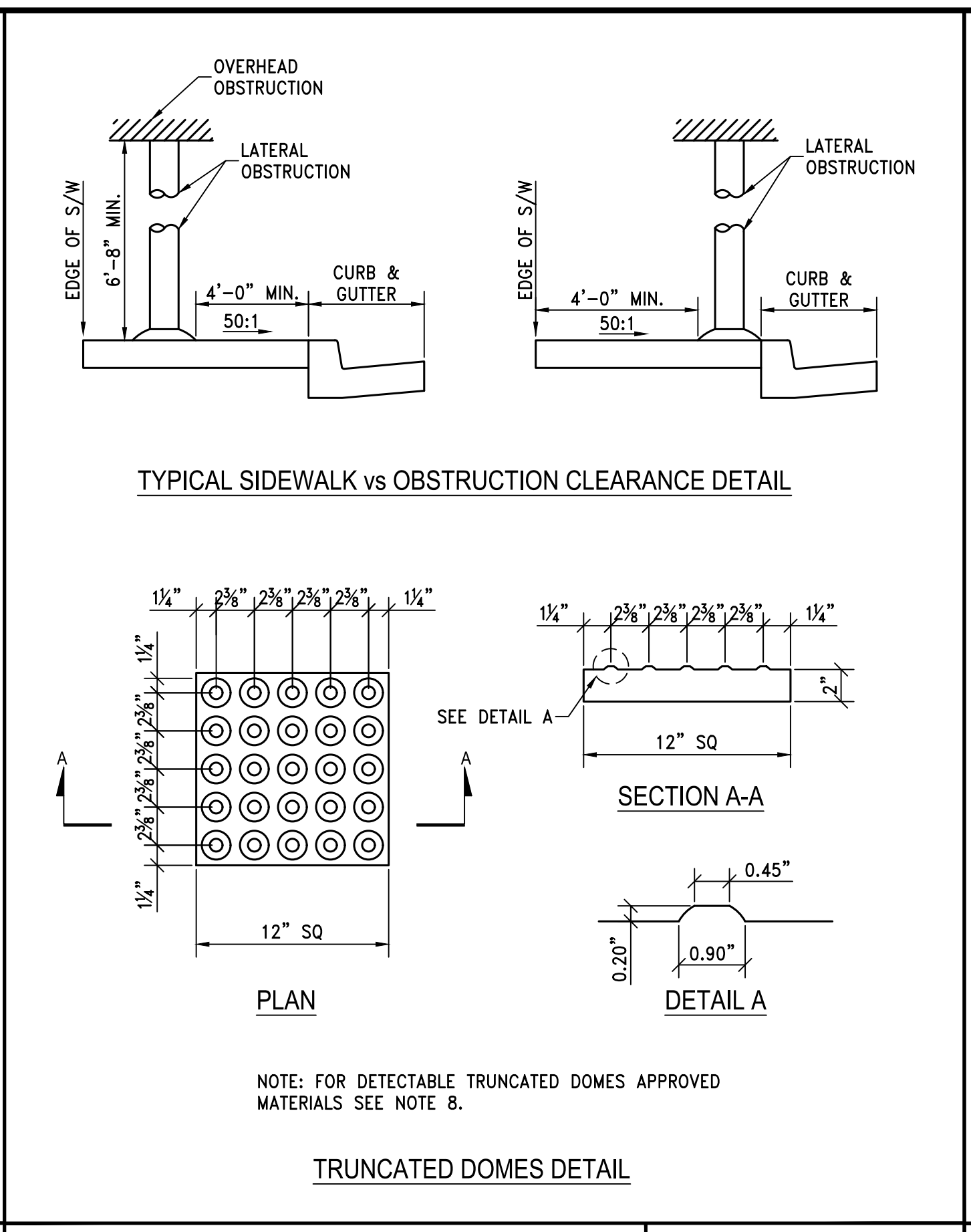
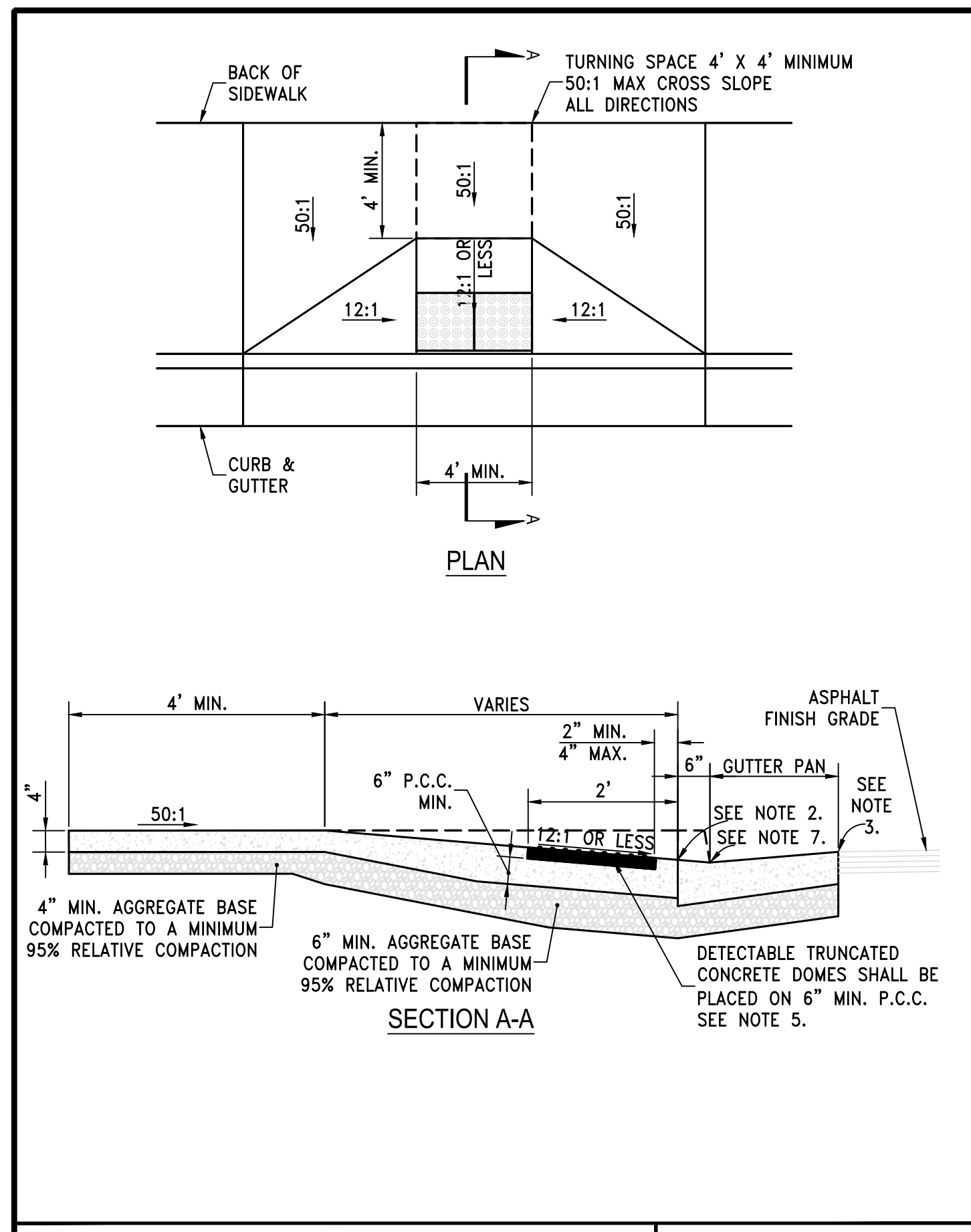
885 ROBERTA LANE, SUITE 104, SPARKS, NV 89431
 (775) 369-3303 FAX (775) 359-3329
 EMAIL: INFO@DYDESSE.COM
 WWW.DYDESSE.COM

dydyssey ENGINEERING INCORPORATED

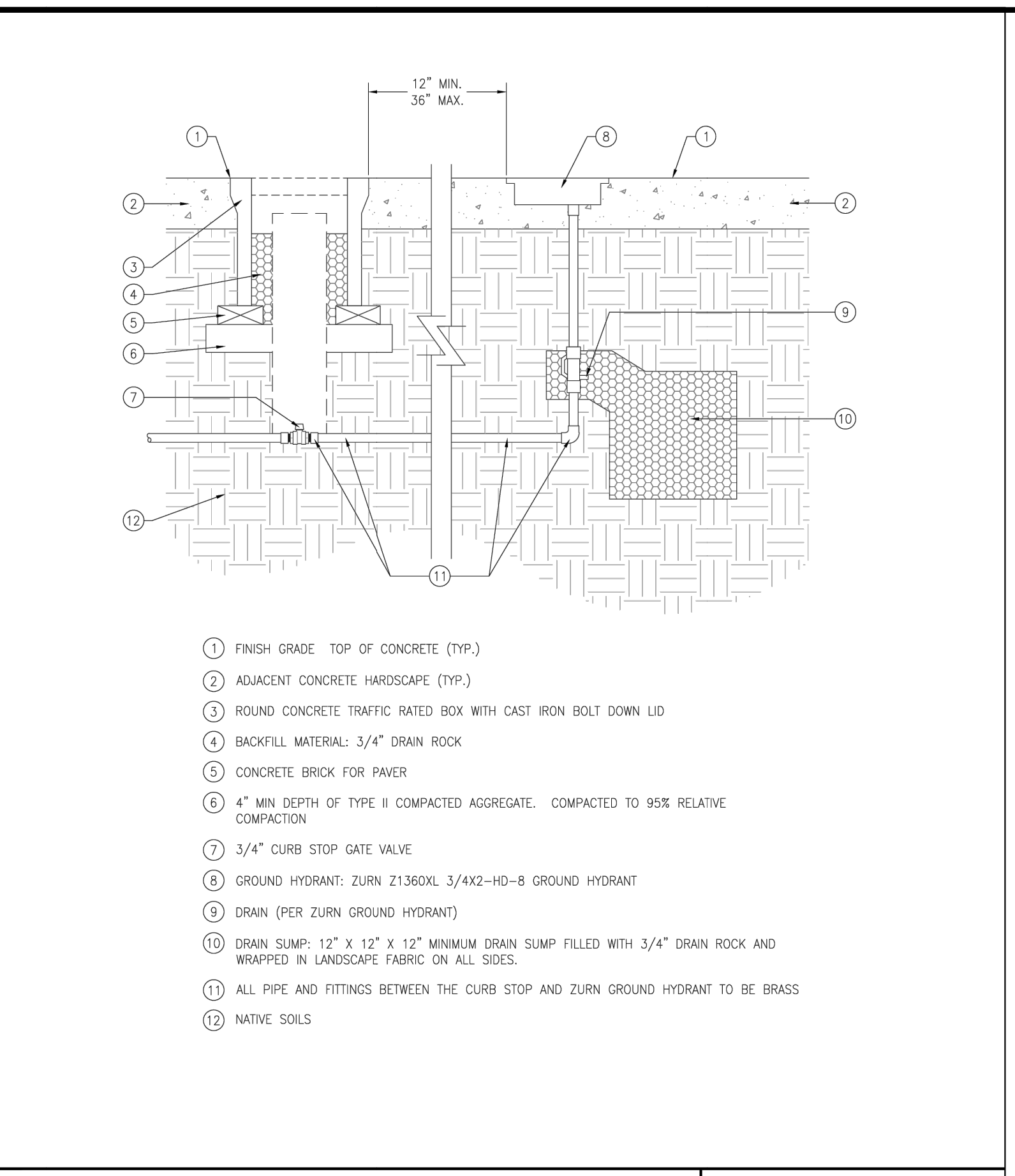


SCALE
 HORIZ. 1"=10'
 VERT. ---
 JOB NO. 4561
 SHEET 4 OF 6





- STORM DRAIN INLETS OR SIMILAR ACCESSES SHALL NOT BE LOCATED IN THE AREA AT THE BASE OF THE CURB RAMP OR LANDING AREA. IF OBSTRUCTIONS SUCH AS INLETS, UTILITY POLES, PULL BOXES, FIRE HYDRANTS, ETC. ARE ENCOUNTERED, THE LOCATION AND DIMENSIONS MAY BE ADJUSTED UPON APPROVAL OF THE CITY ENGINEER.
- NO LIP SHALL BE PERMITTED AT THE CURB RAMP SLOPE TO GUTTER PAN.
- PLANTMIX BITUMINOUS SURFACE SHALL BE FLUSH WITH THE EDGE OF THE GUTTER PAN IN THE AREA OF THE CURB RAMP.
- ROUGH BROOM TEXTURE ON CURB RAMPS AND WINGS.
- DETECTABLE WARNING SHALL BE INSTALLED PER MANUFACTURER'S RECOMMENDATIONS AND SHALL BE PLACED ON MIN. SIX (6") INCHES OF P.C.C.
- ALL SLOPE RATES ARE RELATIVE TO LEVEL AND SHALL COMPLY WITH THE PUBLIC RIGHT-OF-WAY ACCESSIBILITY GUIDELINES (PROWAG) STANDARDS.
- GUTTER SHALL MAINTAIN POSITIVE DRAINAGE TO PREVENT PONDING.
- DETECTABLE WARNING SHALL CONSIST OF PRECAST WETSET TILES WITH MIN. SIZE OF 2' X 2', COLOR YELLOW. APPROVED PRODUCTS INCLUDE: "CASTITACT 3", "TEKWAY DOME-TILES", AND "ACCESS TILE". DETECTABLE WARNING SURFACES SHALL EXTEND THE FULL WIDTH OF THE RAMP RUN (EXCLUDING ANY FLARED SIDES), BLENDED TRANSITION, OR TURNING SPACE. DETECTABLE WARNING SHALL BE CONSTRUCTED PER MANUFACTURER'S INSTALLATION GUIDELINES AND CONFORM TO ADAAG.
- CONCRETE REMOVAL SHALL BE TO NEAT SAW CUT LINES
- AGGREGATE BASE MATERIAL UNDER PEDESTRIAN RAMPS SHALL BE TYPE 2, CLASS B CRUSHED AGGREGATE BASE. MATERIALS SHALL CONFORM TO SSPWC SECTION 200, AS ADOPTED BY CITY COUNCIL.
- PORTLAND CEMENT CONCRETE (P.C.C.) SHALL HAVE THE FOLLOWING CHARACTERISTICS: 4000 PSI MIN. COMPRESSIVE STRENGTH AT 28 DAYS, MIN. 6 SACKS OF CEMENT PER CUBIC YARD WITH MAX. WATER-CEMENT RATIO OF 0.45, AIR ENTRAINMENT 6% ±1.5%, SLUMP AT 1 TO 4 INCHES. MIX DESIGN SHALL CONFORM TO THE REQUIREMENTS OF SECTION 337 OF STANDARD SPECIFICATIONS OF PUBLIC WORKS CONSTRUCTION (SSPWC), AS ADOPTED BY CITY COUNCIL. CEMENT SHALL BE TYPE II. ALL CEMENT CONCRETE SHALL HAVE A COARSE AGGREGATE GRADATION CONFORMING TO SIZE No. 67. POLYPROPYLENE OR CELLULOSE FIBERS SHALL BE ADDED TO THE P.C.C. AT 1.5 LBS. PER CUBIC YARD. ALL MATERIALS SHALL CONFORM TO SSPWC, AS ADOPTED BY CITY COUNCIL.
- CONTRACTORS SHALL CORRECT ANY GRADE CONFLICT WITH EXISTING BOXES. THE CITY ENGINEER SHALL MAKE THE FINAL DETERMINATION REGARDING THE DEGREE OF MODIFICATIONS REQUIRED BY THE CONTRACTOR FOR GRADE CONFLICTS BETWEEN EXISTING BOXES AND NEW PEDESTRIAN RAMPS.
- SIDEWALK AT BOTH SIDES OF RAMP MAY BE RECONSTRUCTED TO MINIMIZE THE GRADE AT A HORIZONTAL DISTANCE TO BE DETERMINED IN THE FIELD, UPON APPROVAL OF THE CITY ENGINEER, SUBJECT TO PROWAG REQUIREMENTS. CURB AT THE BACK OF WALK MAY BE NEEDED. A TRANSITION SECTION OF SIDEWALK MAY BE NECESSARY TO MATCH CROSS SLOPE OF EXISTING SIDEWALK TO PEDESTRIAN RAMP IMPROVEMENTS. TRANSITION SECTIONS SHALL BE APPROVED BY THE ENGINEER PRIOR TO INSTALLATION.

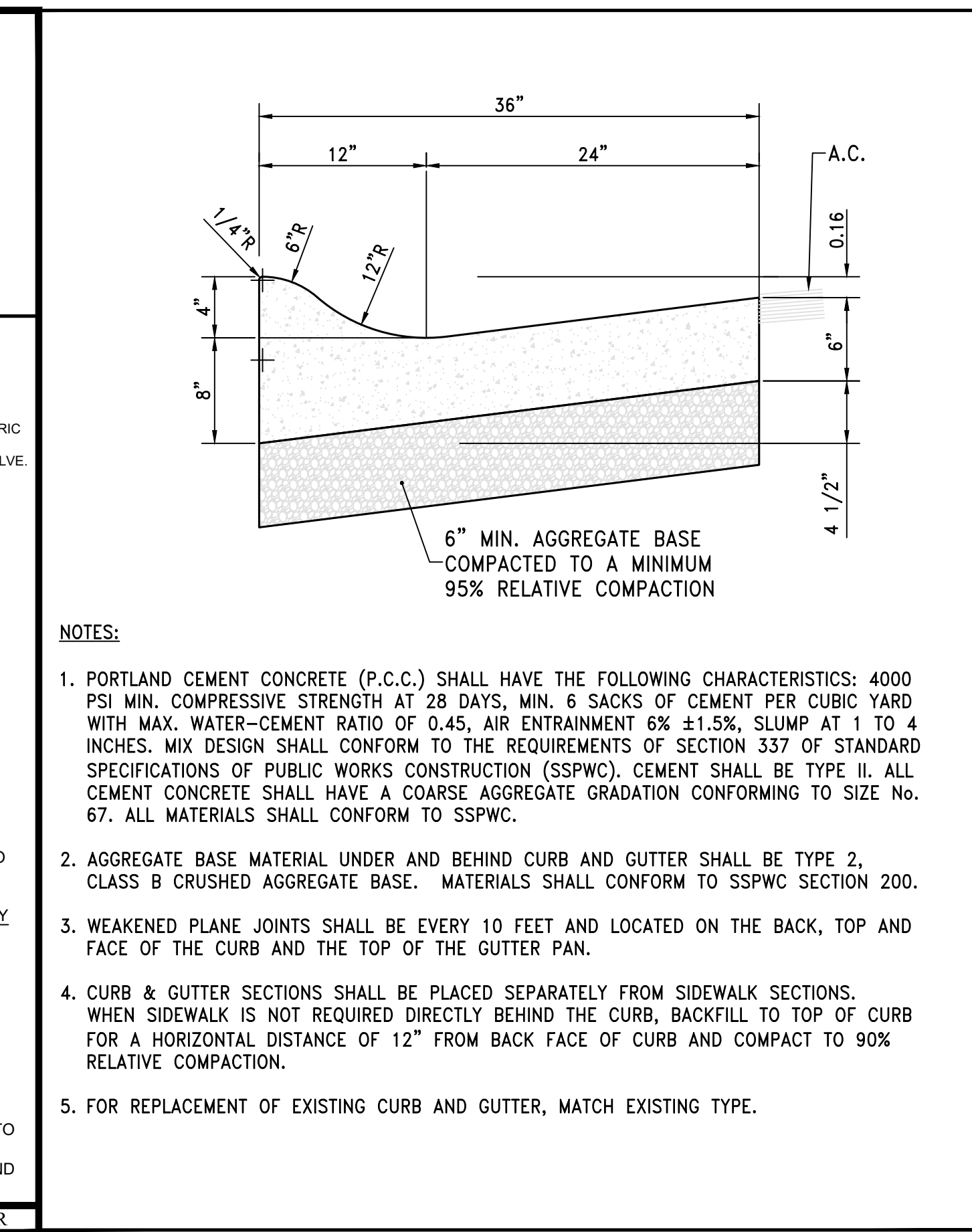
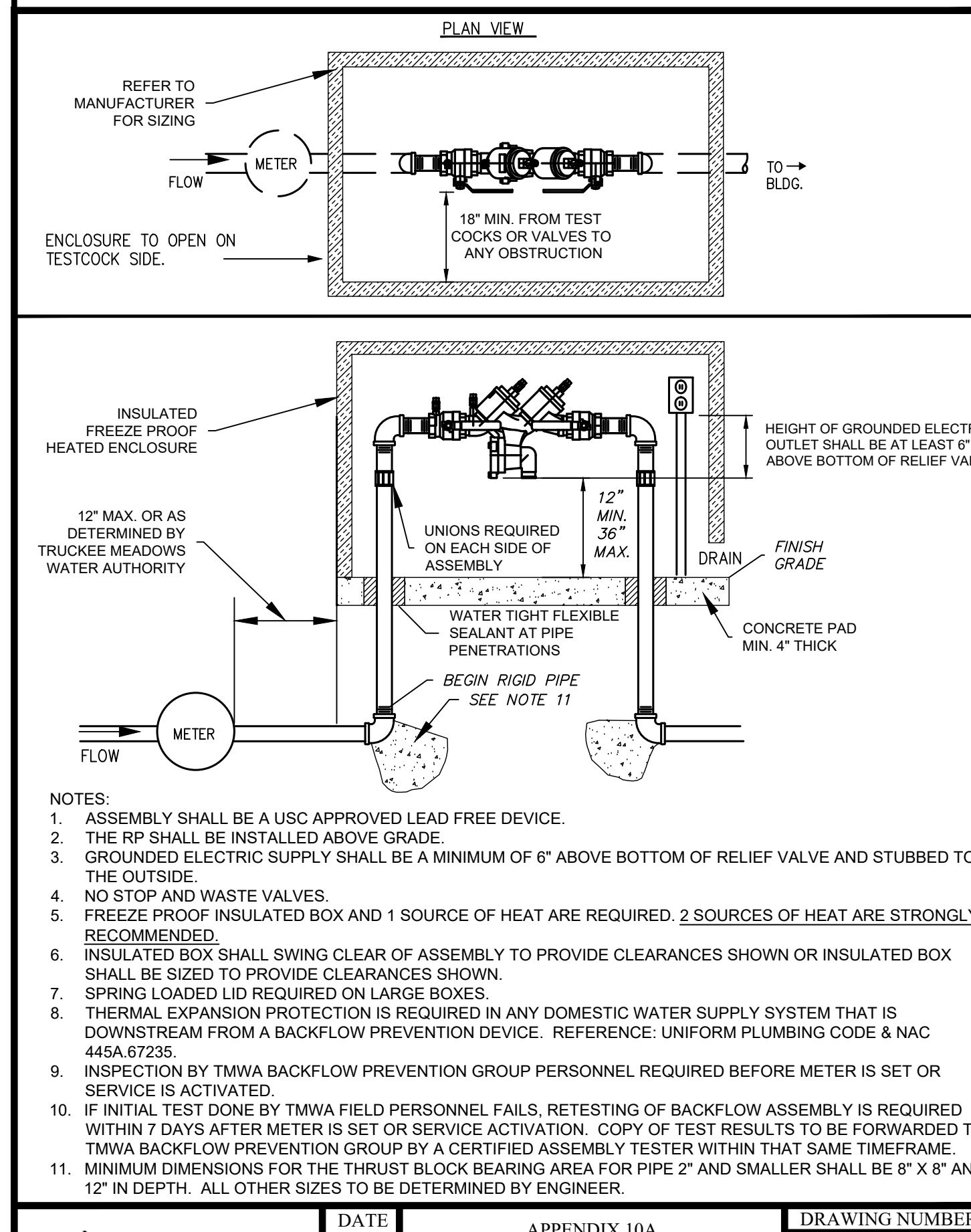


STANDARD DETAILS FOR PUBLIC WORKS CONSTRUCTION	DRAWING No.
PEDESTRIAN RAMP MIDBLOCK - TYPE 2	S-106E
APPROVED BY: JE	DATE: 1/2020

STANDARD DETAILS FOR PUBLIC WORKS CONSTRUCTION	DRAWING No.
PEDESTRIAN RAMP - DETAILS	S-106F
APPROVED BY: JE	DATE: 1/2020

STANDARD DETAILS FOR PUBLIC WORKS CONSTRUCTION	DRAWING No.
NOTES - PEDESTRIAN RAMP	S-106G
APPROVED BY: JE	DATE: 1/2020

STANDARD DETAILS FOR PUBLIC WORKS CONSTRUCTION	DRAWING No.
IRRIGATION DETAILS GROUND HYDRANT	IR-001
APPROVED BY: GSJ	DATE: 10/2019

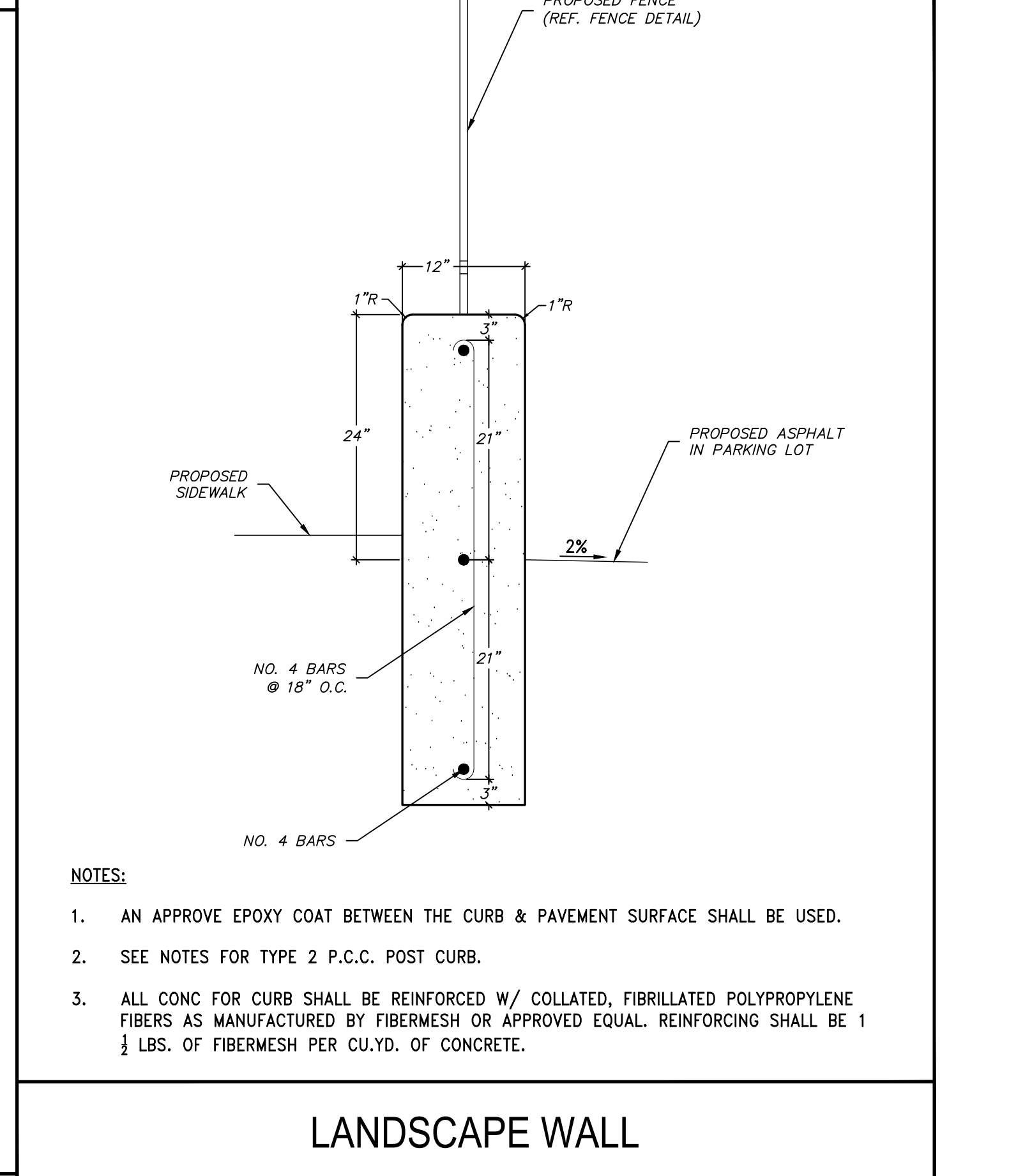


DATE	APPENDIX 10A	DRAWING NUMBER
7/2001	BACKFLOW PREVENTION ASSEMBLIES	10A-2
REV	REDUCED PRESSURE PRINCIPLE ASSEMBLY FOR DOMESTIC USE EXTERNAL - HORIZONTAL	
9/2016		

TYPE 3 ROLL CURB & GUTTER

- PORTLAND CEMENT CONCRETE (P.C.C.) SHALL HAVE THE FOLLOWING CHARACTERISTICS: 4000 PSI MIN. COMPRESSIVE STRENGTH AT 28 DAYS, MIN. 6 SACKS OF CEMENT PER CUBIC YARD WITH MAX. WATER-CEMENT RATIO OF 0.45, AIR ENTRAINMENT 6% ±1.5%, SLUMP AT 1 TO 4 INCHES. MIX DESIGN SHALL CONFORM TO THE REQUIREMENTS OF SECTION 337 OF STANDARD SPECIFICATIONS OF PUBLIC WORKS CONSTRUCTION (SSPWC). CEMENT SHALL BE TYPE II. ALL CEMENT CONCRETE SHALL HAVE A COARSE AGGREGATE GRADATION CONFORMING TO SIZE No. 67. ALL MATERIALS SHALL CONFORM TO SSPWC.
- AGGREGATE BASE MATERIAL UNDER AND BEHIND CURB AND GUTTER SHALL BE TYPE 2, CLASS B CRUSHED AGGREGATE BASE. MATERIALS SHALL CONFORM TO SSPWC SECTION 200.
- WEAKENED PLANE JOINTS SHALL BE EVERY 10 FEET AND LOCATED ON THE BACK, TOP AND FACE OF THE CURB AND THE TOP OF THE GUTTER PAN.
- CURB & GUTTER SECTIONS SHALL BE PLACED SEPARATELY FROM SIDEWALK SECTIONS. WHEN SIDEWALK IS NOT REQUIRED DIRECTLY BEHIND THE CURB, BACKFILL TO TOP OF CURB FOR A HORIZONTAL DISTANCE OF 12" FROM BACK FACE OF CURB AND COMPACT TO 90% RELATIVE COMPACTION.
- FOR REPLACEMENT OF EXISTING CURB AND GUTTER, MATCH EXISTING TYPE.

TYPE 2 P.C.C. POST CURB



LANDSCAPE WALL

DATE:	BY:	APP'D:
1/1-5-22		
DRAWN BY:	DESCRIPTION:	
C3D_2022		
DESIGNED BY:	DATE:	
TCP		
CHECKED BY:	REV:	
TCP		

CITY OF SPARKS REVIEW

VICTORIAN AVE. INFRASTRUCTURE IMPROVEMENTS SECTION 2C CIVIL DETAILS

NEVADA
WASHOE
SPARKS

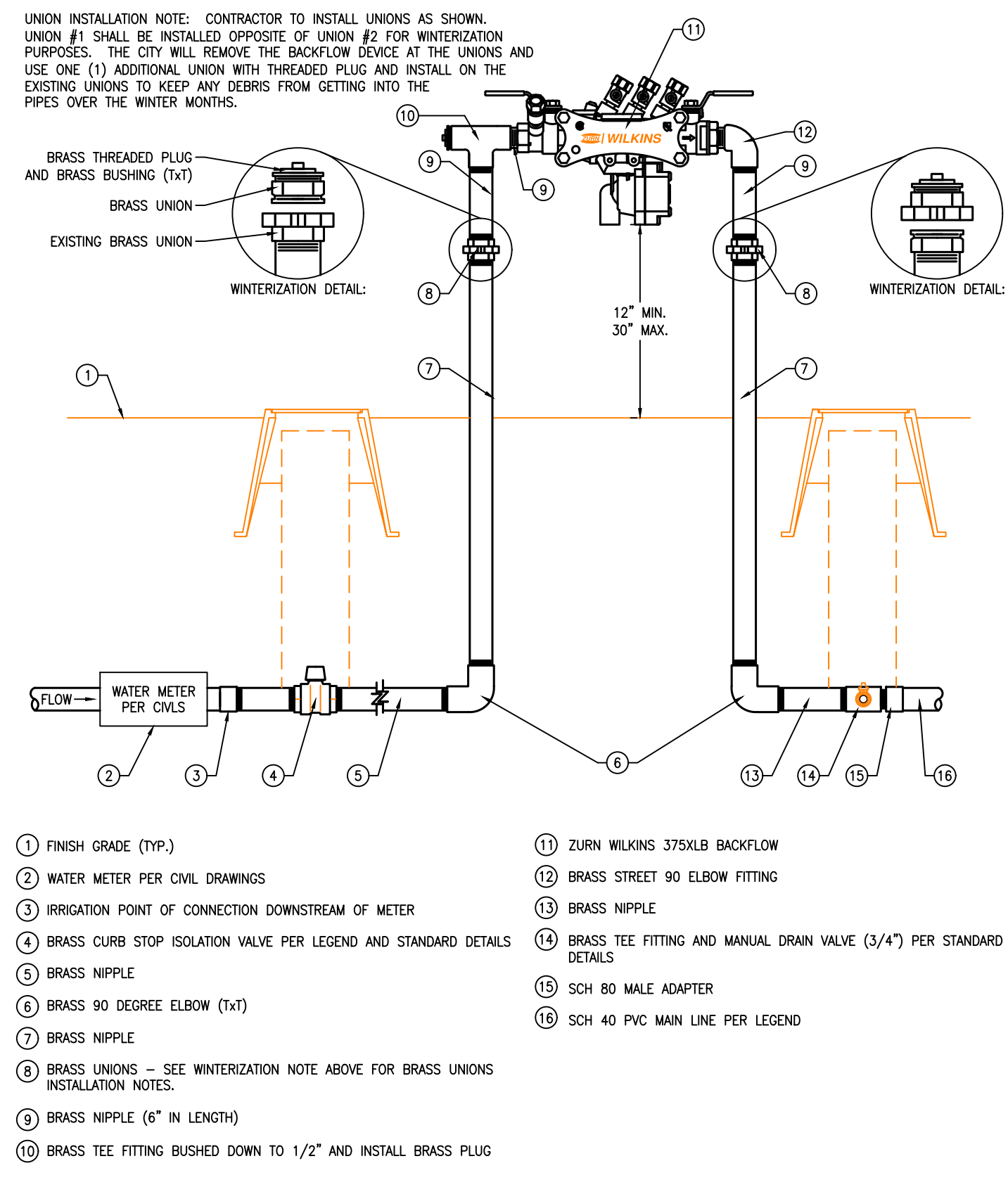
885 ROBERTA LANE, SUITE 104, SPARKS, NV 89431
(775) 399-3667 FAX: (775) 399-3668
ODYSSEY-RENO.COM

odyssey ENGINEERING INCORPORATED

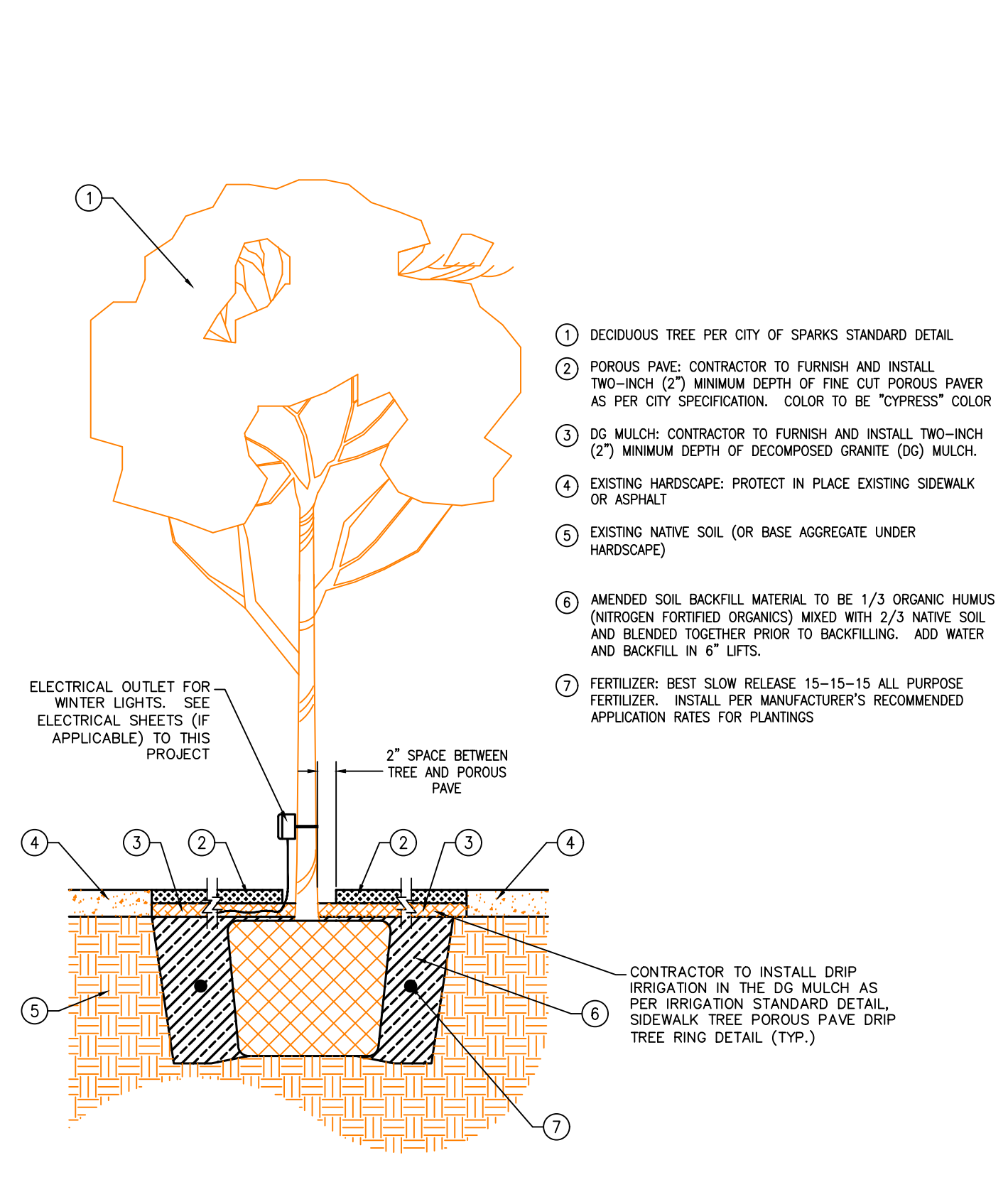
PROFESSIONAL ENGINEER - STATE OF NEVADA

TRAVIS C. PAGE
Exp. 12-31-23
CIVIL
No. 28825

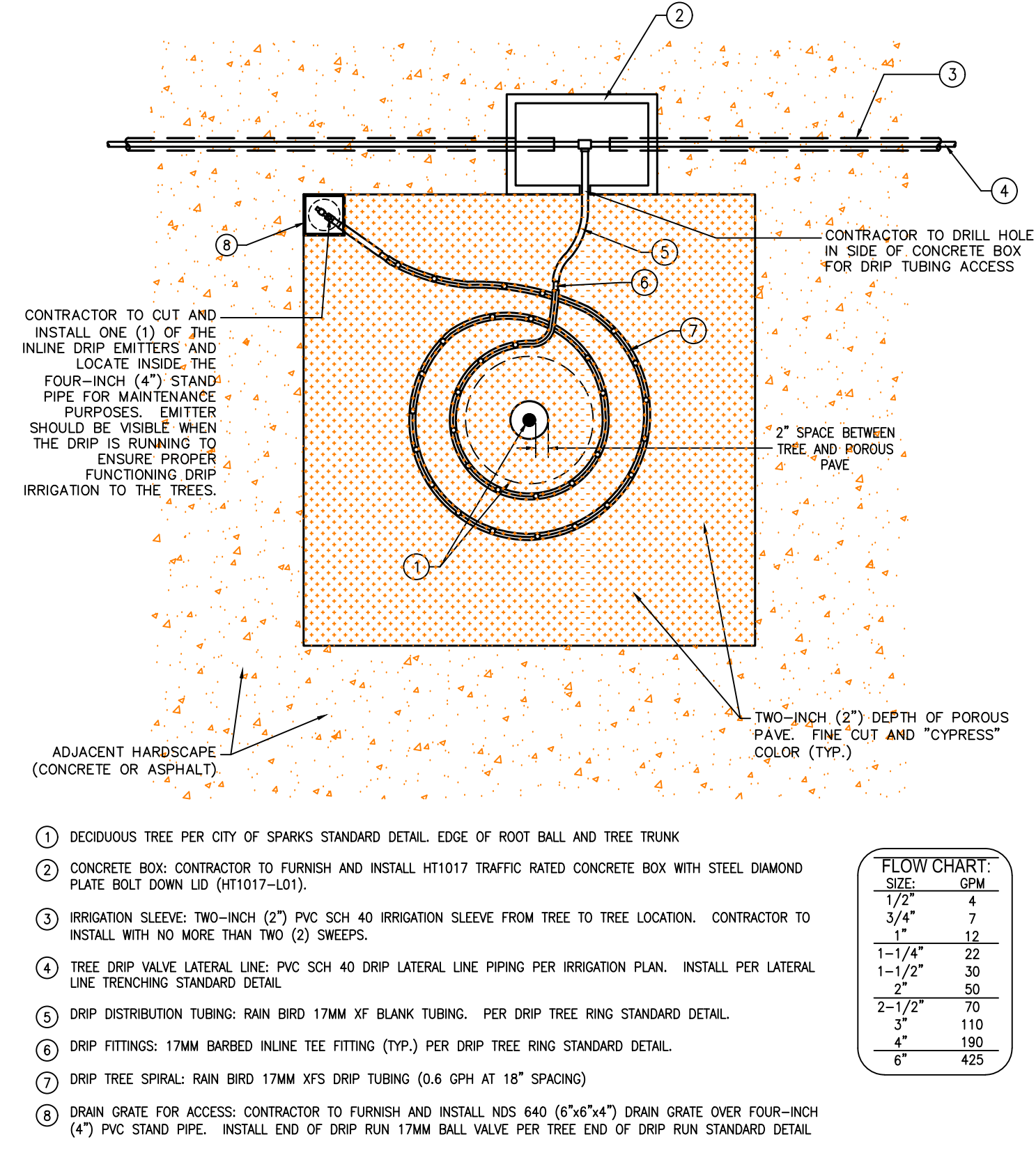
SCALE
HORIZ. -
VERT. -
JOB NO. 4561
SHEET 5 OF 6



- 1 FINISH GRADE (TYP.)
- 2 WATER METER PER CIVIL DRAWINGS
- 3 IRRIGATION POINT OF CONNECTION DOWNSTREAM OF METER
- 4 BRASS CURB STOP ISOLATION VALVE PER LEGEND AND STANDARD DETAILS
- 5 BRASS NIPPLE
- 6 BRASS 90 DEGREE ELBOW (1X1)
- 7 BRASS NIPPLE
- 8 BRASS UNIONS - SEE WINTERIZATION NOTE ABOVE FOR BRASS UNIONS INSTALLATION NOTES.
- 9 BRASS NIPPLE (6" IN LENGTH)
- 10 BRASS TEE FITTING BUSHED DOWN TO 1/2" AND INSTALL BRASS PLUG
- 11 ZURN WILKINS 375XLB BACKFLOW
- 12 BRASS STREET 90 ELBOW FITTING
- 13 BRASS NIPPLE
- 14 BRASS TEE FITTING AND MANUAL DRAIN VALVE (3/4") PER STANDARD DETAILS
- 15 SCH 80 MALE ADAPTER
- 16 SCH 40 PVC MAIN LINE PER LEGEND

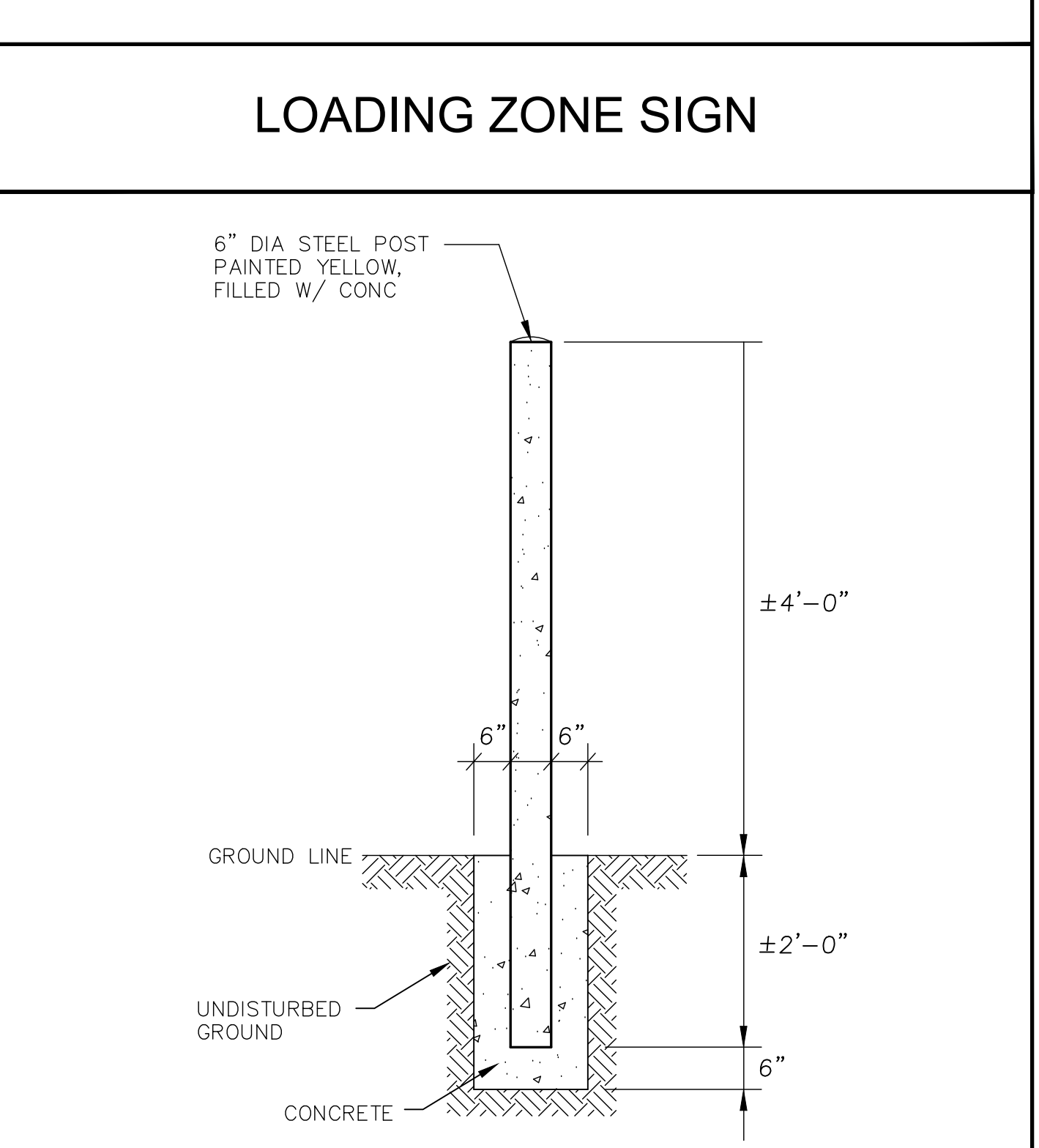
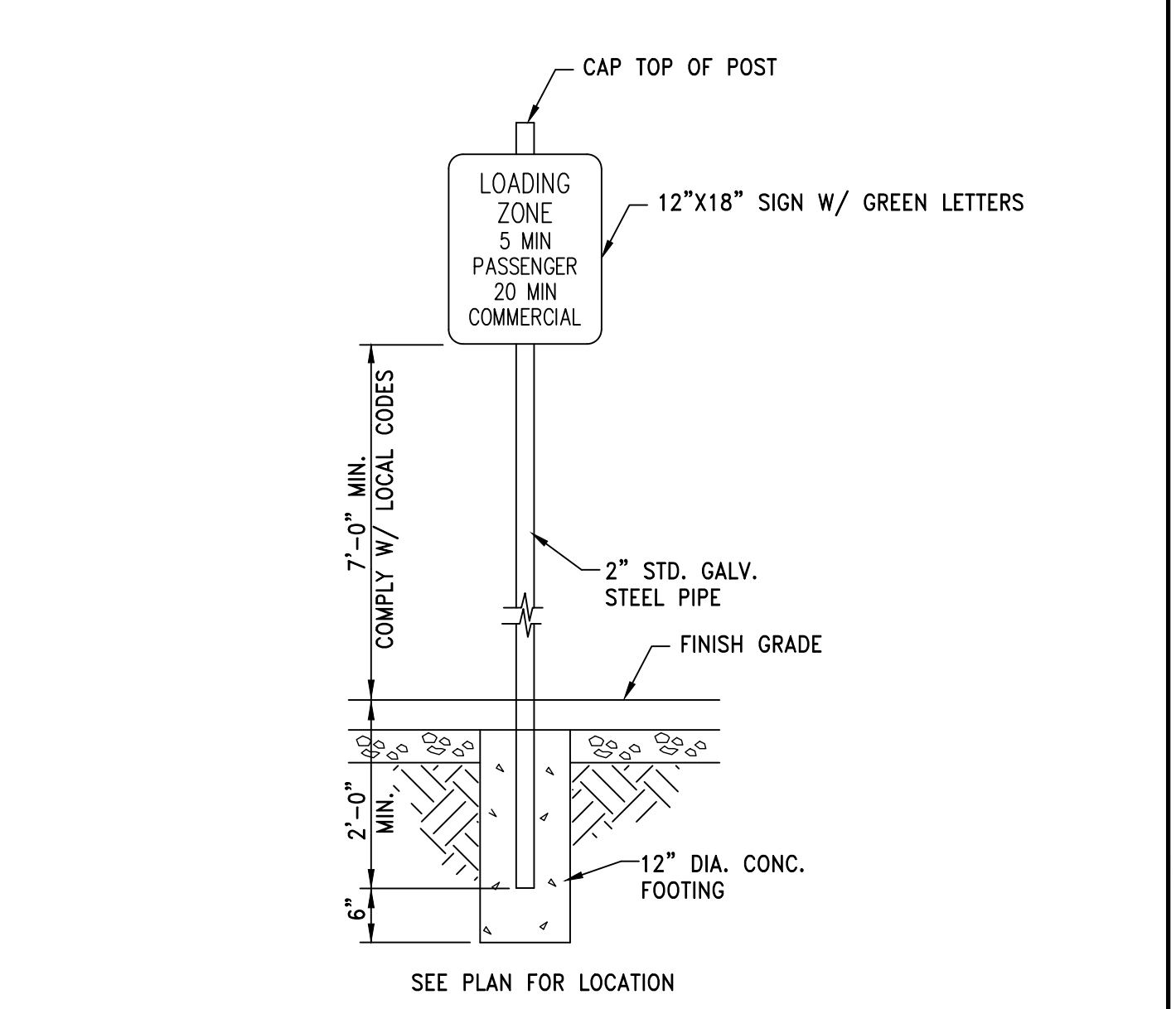


- 1 DECIDUOUS TREE PER CITY OF SPARKS STANDARD DETAIL
- 2 POROUS PAVE: CONTRACTOR TO FURNISH AND INSTALL TWO-INCH (2") MINIMUM DEPTH OF FINE CUT POROUS PAVE AS PER CITY SPECIFICATION. COLOR TO BE "CYPRESS" COLOR
- 3 DG MULCH: CONTRACTOR TO FURNISH AND INSTALL TWO-INCH (2") MINIMUM DEPTH OF DECOMPOSED GRANITE (DG) MULCH.
- 4 EXISTING HARDSCAPE: PROTECT IN PLACE EXISTING SIDEWALK OR ASPHALT
- 5 EXISTING NATIVE SOIL (OR BASE AGGREGATE UNDER HARDSCAPE)
- 6 AMENDED SOIL BACKFILL MATERIAL TO BE 1/3 ORGANIC HUMUS (NITROGEN FORTIFIED ORGANICS) MIXED WITH 2/3 NATIVE SOIL AND BLENDED TOGETHER PRIOR TO BACKFILLING. ADD WATER AND BACKFILL IN 6" LIFTS.
- 7 FERTILIZER: BEST SLOW RELEASE 15-15-15 ALL PURPOSE FERTILIZER. INSTALL PER MANUFACTURER'S RECOMMENDED APPLICATION RATES FOR PLANTINGS



- 1 DECIDUOUS TREE PER CITY OF SPARKS STANDARD DETAIL. EDGE OF ROOT BALL AND TREE TRUNK
- 2 CONCRETE BOX: CONTRACTOR TO FURNISH AND INSTALL HT1017 TRAFFIC RATED CONCRETE BOX WITH STEEL DIAMOND PLATE BOLT DOWN LID (HT1017-L01).
- 3 IRRIGATION SLEEVE: TWO-INCH (2") PVC SCH 40 IRRIGATION SLEEVE FROM TREE TO TREE LOCATION. CONTRACTOR TO INSTALL WITH NO MORE THAN TWO (2) SWEEPS.
- 4 TREE DRIP VALVE LATERAL LINE: PVC SCH 40 DRIP LATERAL LINE PIPING PER IRRIGATION PLAN. INSTALL PER LATERAL LINE TRENCHING STANDARD DETAIL.
- 5 DRIP DISTRIBUTION TUBING: RAIN BIRD 17MM XFS BLANK TUBING. PER DRIP TREE RING STANDARD DETAIL.
- 6 DRIP FITTINGS: 17MM BARBED INLINE TEE FITTING (TYP.) PER DRIP TREE RING STANDARD DETAIL.
- 7 DRIP TREE SPIRAL: RAIN BIRD 17MM XFS DRIP TUBING (0.6 GPH AT 18" SPACING)
- 8 DRAIN GRATE FOR ACCESS: CONTRACTOR TO FURNISH AND INSTALL NDS 640 (6"x6"x4") DRAIN GRATE OVER FOUR-INCH (4") PVC STAND PIPE. INSTALL END OF DRIP RUN 17MM BALL VALVE PER TREE END OF DRIP RUN STANDARD DETAIL.

SIZE	QTY
1/2"	4
3/4"	7
1"	12
1-1/4"	22
1-1/2"	30
2"	50
2-1/2"	70
3"	110
4"	190
6"	425



STANDARD DETAILS FOR PUBLIC WORKS CONSTRUCTION

City of Sparks IRRIGATION DETAILS STANDARD (TYPICAL) BACKFLOW PREVENTION (2" OR LESS)

DRAWING No. IR-00X

DRAWN BY: GSJ DATE: 01/2020

STANDARD DETAILS FOR PUBLIC WORKS CONSTRUCTION

City of Sparks LANDSCAPE DETAILS STANDARD (TYPICAL) SIDEWALK TREE POROUS PAVE

DRAWING No. LS-00X

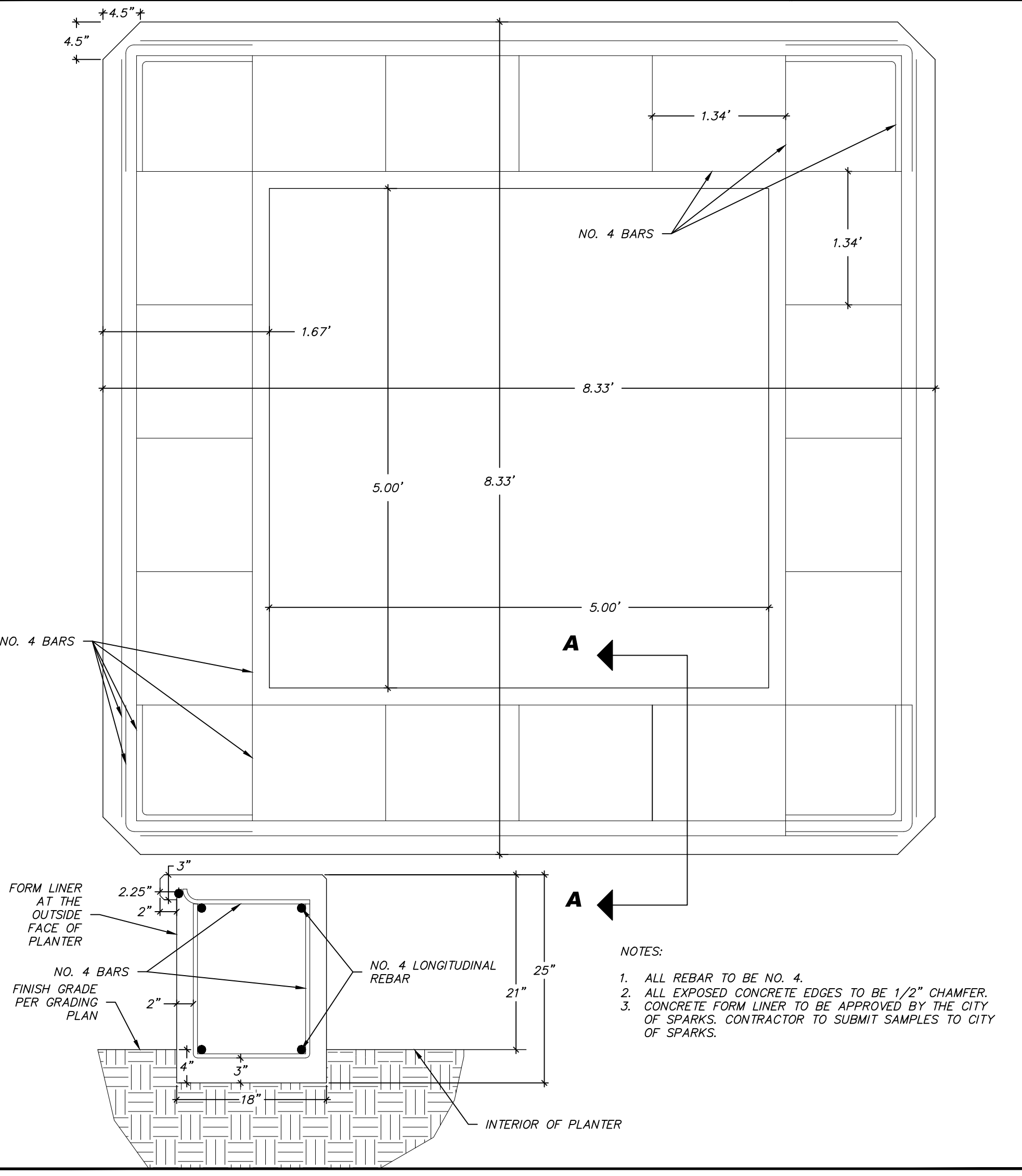
DRAWN BY: GSJ DATE: 03/2021

STANDARD DETAILS FOR PUBLIC WORKS CONSTRUCTION

City of Sparks IRRIGATION DETAILS STANDARD (TYPICAL) SIDEWALK TREE POROUS PAVE

DRAWING No. IR-00X

DRAWN BY: GSJ DATE: 03/2021



8'X8' PLANTER

CITY OF SPARKS APPROVAL:

JON R. ERICSON, P.E., P.T.O.E. DATE: _____
CITY ENGINEER

HT1017 TRAFFIC BOX
Meets Specifications: Caltrans 3-1/2(T) and NDOT 3-1/2(T)

Compare to: Christy B1017 Brooks Products 3-1/2-T

PART NO.	PRODUCT	DESCRIPTION	APPROX. WEIGHT	QTY. PER PALLET
HT1017-B	BOX	10"x17"x12" Concrete Traffic Rated Box (Comes Standard With Hex Bolts)	125	20
HT1017-E	EXTENSION	10"x17"x12" Concrete Extension	126	20
HT1017-L01	LID	Steel Diamond Plate Bolt Down Lid	38	
HT1017-L03	LID	Steel Traxplate Bolt Down Slip Resistant Cover	38	

GALVANIZING AVAILABLE ON ALL STEEL LIDS

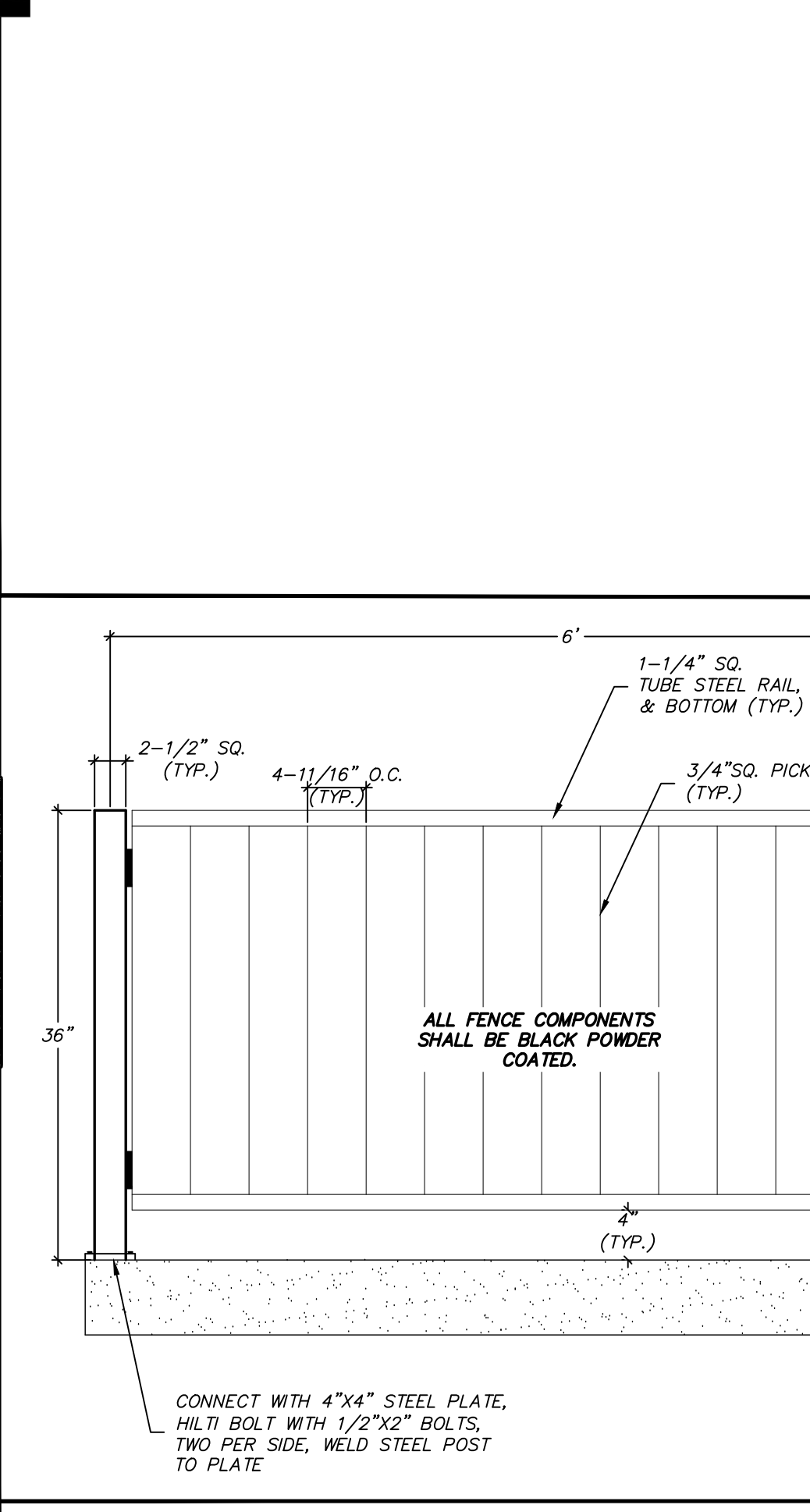
For penta head and other bolt options, see security hardware sheet.

Design load: Traffic rated when installed per Caltrans ES-8B

JENSEN PRECAST® TRAXPLATE®, TRAXPLATE®, and LOCKLID™ are trademarks owned by Jensen Precast. All other trademarks are the property of their respective owners. Jensen Precast reserves the right to make changes to product design and/or dimensions without notice. Please contact Jensen Precast whenever necessary for confirmation or advice on product design.

6/52014 HT1017_U.DWG © 2014 JENSEN PRECAST

JENSEN PRECAST
JENSENPRECAST.COM



FENCE

CITY OF SPARKS REVIEW

VICTORIAN AVE. INFRASTRUCTURE IMPROVEMENTS SECTION 2C

CIVIL DETAILS

SPARKS WASHOE NEVADA

885 ROBERTA LANE, SUITE 104, SPARKS, NV 89431
(775) 399-3667 FAX: (775) 399-3668
ODYSSEY-RENO.COM

odyssey ENGINEERING INCORPORATED

PROFESSIONAL ENGINEER - STATE OF NEVADA
TRAVIS C. PAGE
Exp. 12-31-23
No. 28825

SCALE: HORIZ. - VERT. -
JOB NO. 4561
SHEET 6 OF 6